

T6S, R97W, 6th P.M.

1917 Brass Cap,
2.0' High
Lat: 39.544700
Long: 108.234156

N89°54'15"W - 2644.92' (Meas.)

1917 Brass Cap,
1.6' High
Lat: 39.544697
Long: 108.224781

N89°49'47"W - 2626.56' (Meas.)

1917 Brass Cap, 2.0'
High, Fence Corner
Lat: 39.544686
Long: 108.215469

OXY USA WTP LP

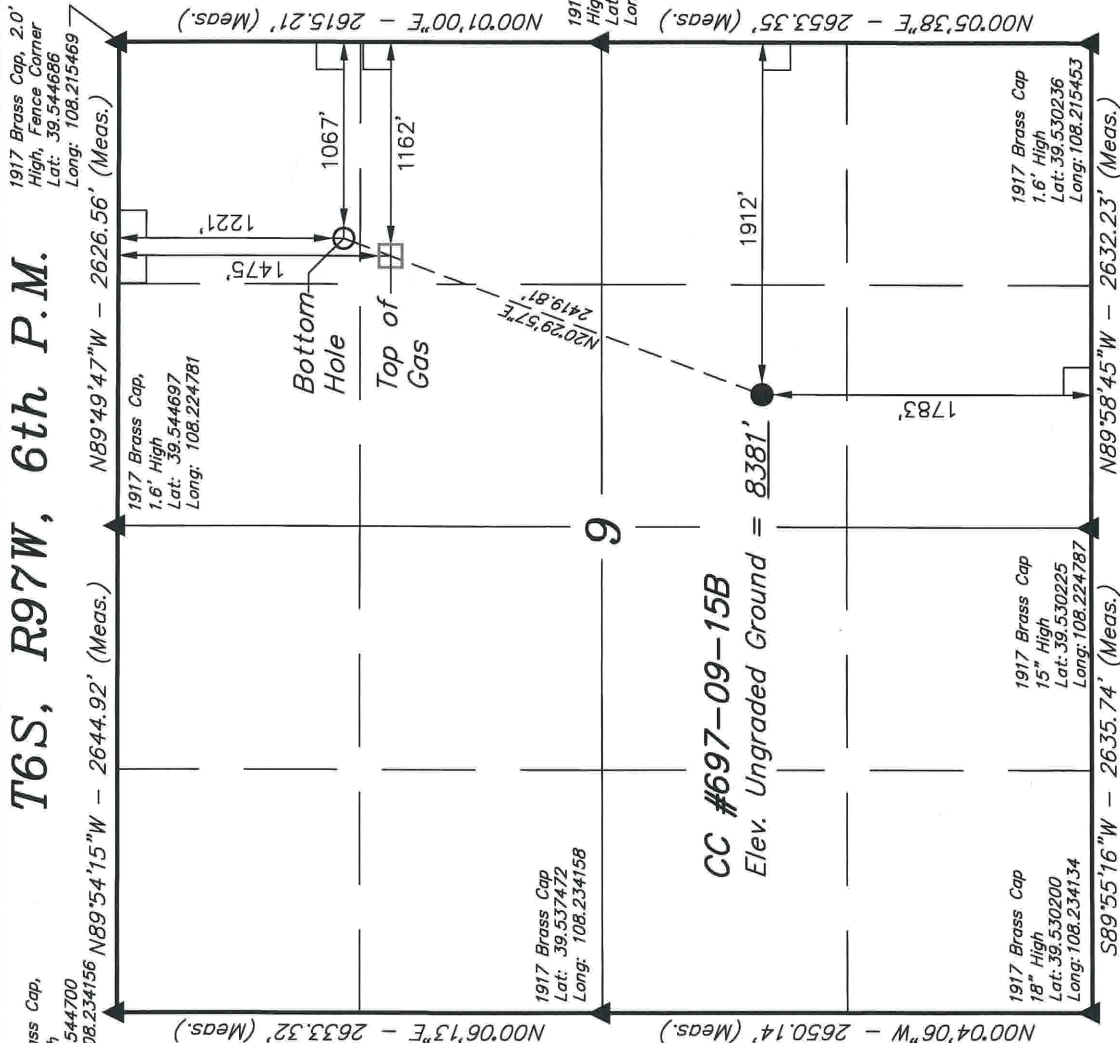
Well location, CC #697-09-15B, located as shown in the NW 1/4 SE 1/4 of Section 9, T6S, R97W, 6th P.M., Garfield County, Colorado.

BASIS OF ELEVATION

SPOT ELEVATION AT THE NORTHWEST CORNER OF SECTION 30, T5S, R95W, 6th P.M. TAKEN FROM THE FORKED GULCH QUADRANGLE, COLORADO, GARFIELD COUNTY, 7.5 MINUTE SERIES (TOPOGRAPHICAL MAP) PUBLISHED BY THE UNITED STATES DEPARTMENT OF THE INTERIOR, GEOLOGICAL SURVEY. SAID ELEVATION IS MARKED AS BEING 5966 FEET.

BASIS OF BEARINGS

BASIS OF BEARINGS IS A G.P.S. OBSERVATION.



CERTIFICATE

THIS IS TO CERTIFY THAT THE ABOVE PLAT WAS PREPARED FROM FIELD NOTES OF ACTUAL SURVEYS MADE BY ME OR UNDER MY SUPERVISION AND THAT THE SAME ARE TRUE AND CORRECT TO THE BEST OF MY KNOWLEDGE AND BELIEF.

[Signature]
REGISTERED LAND SURVEYOR
STATE OF COLORADO
REGISTRATION NO. 17492

UNTAH ENGINEERING & LAND SURVEYING		85 SOUTH 200 EAST - VERNAL, UTAH 84078	
PDOP = 1.3		(435) 789-1017	
NAD 83 (SURFACE LOCATION)		SCALE 1" = 1000'	DATE SURVEYED: 8-30-10
LATITUDE = 39°32'06.42" (39.535117)		PARTY B.J. C.G. K.G.	DATE DRAWN: 09-07-10
LONGITUDE = 108°13'20.06" (108.222239)		REFERENCES G.L.O. PLAT	
NAD 27 (SURFACE LOCATION)		WEATHER WARM	FILE
LATITUDE = 39°32'06.50" (39.535139)			
LONGITUDE = 108°13'17.76" (108.221600)			
NAD 83 (TOP OF GAS)			
LATITUDE = 39°32'26.31" (39.540642)			
LONGITUDE = 108°13'10.49" (108.219561)			
NAD 27 (TOP OF GAS)			
LATITUDE = 39°32'26.39" (39.540664)			
LONGITUDE = 108°13'08.20" (108.218944)			

LEGEND:

- = 90° SYMBOL
- = PROPOSED WELL HEAD.
- ▲ = SECTION CORNERS LOCATED.

NOTE:
SEE ADDENDUM TO LEGAL PLAT FOR EXISTING IMPROVEMENTS WITHIN 400' OF THE PROPOSED WELL DISTURBANCE.