

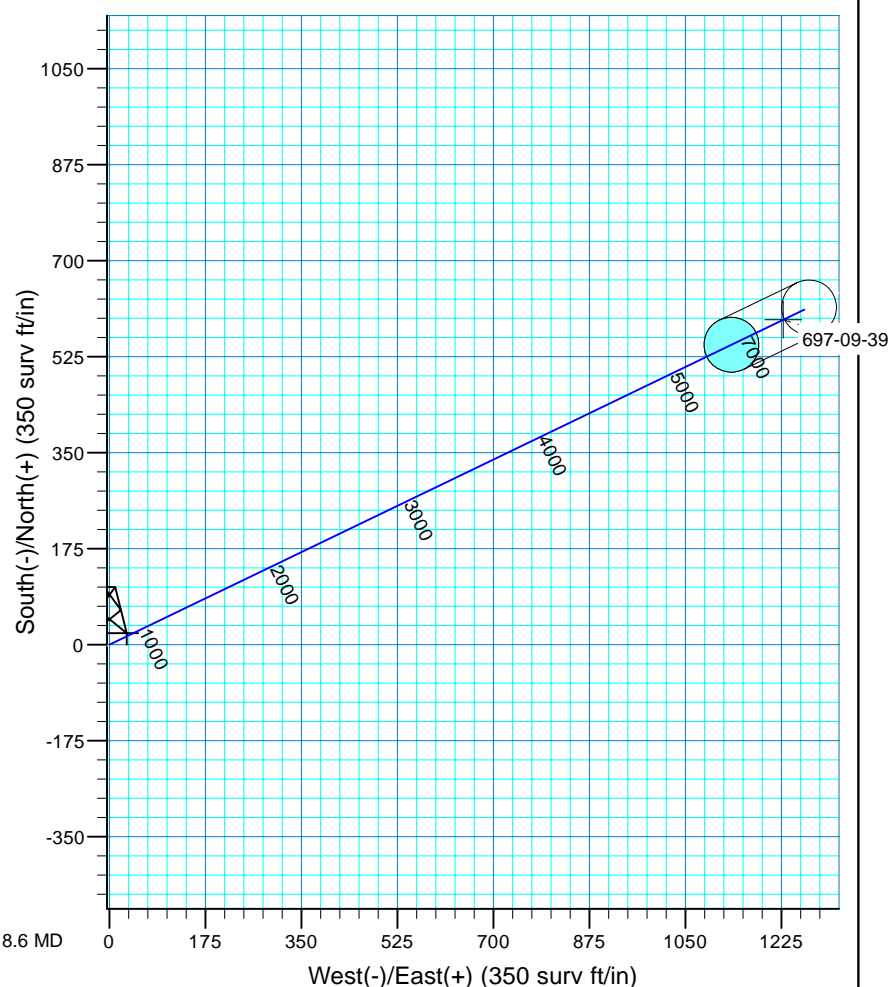
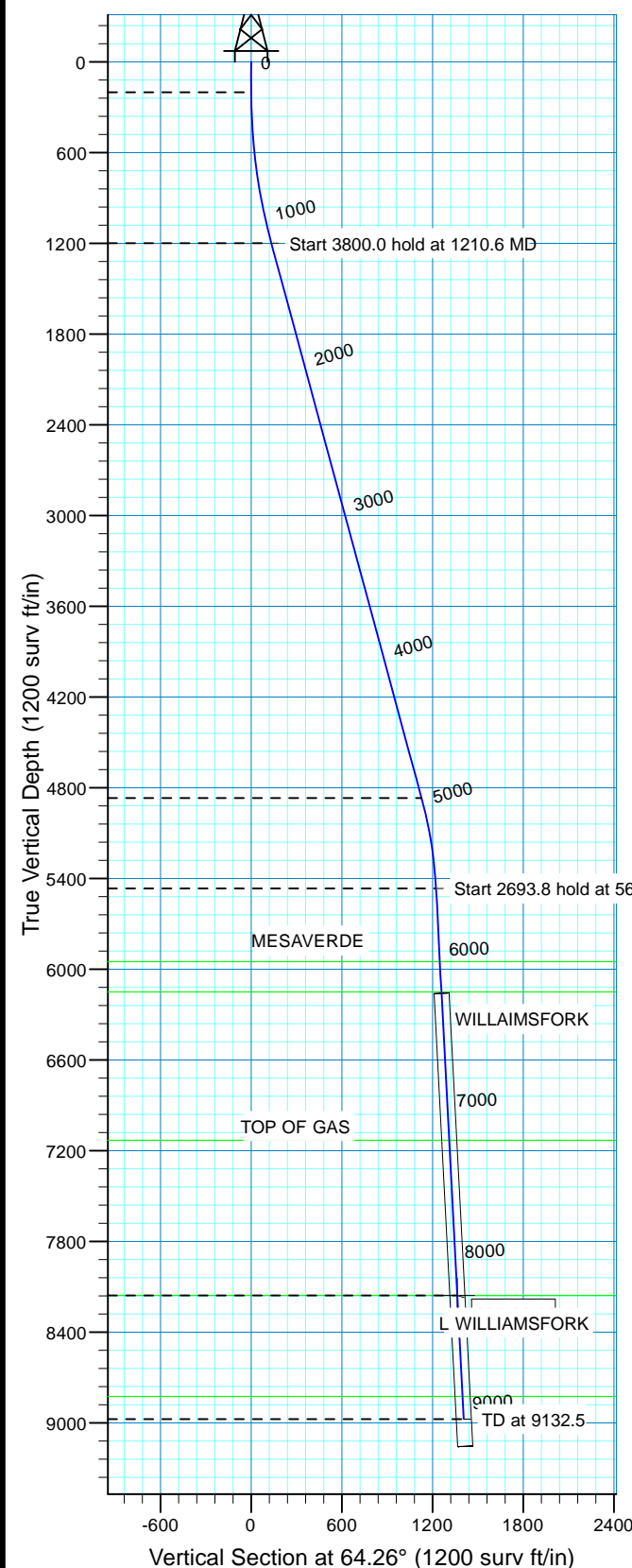


Azimuths to True North
Magnetic North: 10.53°

Magnetic Field
Strength: 52332.0snT
Dip Angle: 65.76°
Date: 9/2/2010
Model: IGRF200510

WELL DETAILS: CASCADE CREEK 697-09-39

WELL @ 8410.0surv ft (Original Well Elev)		8380.0				
+N/-S	+E/-W	Northing	Easting	Latitude	Longitude	Slot
0.0	0.0	631269.26	1232517.37	39° 32' 6.325 N	108° 13' 17.342 W	CC#697-09-39



2 (CASCADE CREEK 697-09-39/CASCADE CREEK 697-0

Created By: Ron Bevans Date: 2010-07-09

FORMATION TOP DETAILS

TVDPATH	MDPATH	FORMATION
5950.0	6103.4	MESAVERDE
6150.0	6303.7	WILLAIMSFORK
7130.0	7285.0	TOP OF GAS
8156.0	8312.4	L WILLIAMSFORK
8825.0	8982.3	ROLLINS

PROJECT DETAILS: GRAND VALLEY

Geodetic System: US State Plane 1927 (Exact solution)
Datum: NAD 1927 (NADCON CONUS)
Ellipsoid: Clarke 1866
Zone: Colorado Central 502

System Datum: Mean Sea Level
Local North: True

SECTION DETAILS

MD	Inc	Azi	TVD	+N/-S	+E/-W	Dleg	Vsect	Target
0.0	0.00	0.00	0.0	0.0	0.0	0.00	0.0	
200.0	0.00	0.00	200.0	0.0	0.0	0.00	0.0	
1210.6	15.16	64.26	1198.9	57.7	119.7	1.50	132.9	
5010.6	15.16	64.26	4866.7	489.4	1014.8	0.00	1126.7	
5618.6	3.00	64.26	5465.9	531.0	1101.1	2.00	1222.4	
8312.4	3.00	64.26	8156.0	592.2	1228.1	0.00	1363.4	697-09-39
9132.5	3.00	64.26	8975.0	610.8	1266.7	0.00	1406.3	



OXY USA MID-CON

GRAND VALLEY

CASCADE CREEK 609-33 PAD

CASCADE CREEK 697-09-39 - Slot CC#697-09-39

CASCADE CREEK 697-09-39

Plan: PLAN 2

Standard Planning Report - Geographic

08 September, 2010



OXY
Planning Report - Geographic

Database:	HOPSP	Local Co-ordinate Reference:	Well CASCADE CREEK 697-09-39 - Slot CC#697-09-39
Company:	OXY USA MID-CON	TVD Reference:	WELL @ 8410.0surv ft (Original Well Elev)
Project:	GRAND VALLEY	MD Reference:	WELL @ 8410.0surv ft (Original Well Elev)
Site:	CASCADE CREEK 609-33 PAD	North Reference:	True
Well:	CASCADE CREEK 697-09-39	Survey Calculation Method:	Minimum Curvature
Wellbore:	CASCADE CREEK 697-09-39		
Design:	PLAN 2		

Project	GRAND VALLEY, NORTH AMERICA		
Map System:	US State Plane 1927 (Exact solution)	System Datum:	Mean Sea Level
Geo Datum:	NAD 1927 (NADCON CONUS)		
Map Zone:	Colorado Central 502		

Site	CASCADE CREEK 609-33 PAD		
Site Position:		Northing:	631,298.91 surv ft
From:	Map	Easting:	1,232,465.23 surv ft
Position Uncertainty:	0.0 surv ft	Slot Radius:	0.000 in
		Latitude:	39° 32' 6.603 N
		Longitude:	108° 13' 18.019 W
		Grid Convergence:	-1.72 °

Well	CASCADE CREEK 697-09-39 - Slot CC#697-09-39		
Well Position	+N/-S	0.0 surv ft	Northing: 631,269.26 surv ft
	+E/-W	0.0 surv ft	Easting: 1,232,517.36 surv ft
Position Uncertainty	0.0 surv ft	Wellhead Elevation:	30.0 surv ft
		Latitude:	39° 32' 6.325 N
		Longitude:	108° 13' 17.342 W
		Ground Level:	8,380.0 surv ft

Wellbore	CASCADE CREEK 697-09-39				
Magnetics	Model Name	Sample Date	Declination (°)	Dip Angle (°)	Field Strength (nT)
	IGRF200510	9/2/2010	10.53	65.76	52,332

Design	PLAN 2			
Audit Notes:				
Version:	Phase:	PROTOTYPE	Tie On Depth:	0.0
Vertical Section:	Depth From (TVD) (surv ft)	+N/-S (surv ft)	+E/-W (surv ft)	Direction (°)
	0.0	0.0	0.0	64.26

Plan Sections										
Measured Depth (surv ft)	Inclination (°)	Azimuth (°)	Vertical Depth (surv ft)	+N/-S (surv ft)	+E/-W (surv ft)	Dogleg Rate (°/100ft)	Build Rate (°/100ft)	Turn Rate (°/100ft)	TFO (°)	Target
0.0	0.00	0.00	0.0	0.0	0.0	0.00	0.00	0.00	0.00	
200.0	0.00	0.00	200.0	0.0	0.0	0.00	0.00	0.00	0.00	
1,210.6	15.16	64.26	1,198.9	57.7	119.7	1.50	1.50	0.00	64.26	
5,010.6	15.16	64.26	4,866.7	489.4	1,014.8	0.00	0.00	0.00	0.00	
5,618.6	3.00	64.26	5,465.9	531.0	1,101.1	2.00	-2.00	0.00	180.00	
8,312.4	3.00	64.26	8,156.0	592.2	1,228.1	0.00	0.00	0.00	0.00	697-09-39
9,132.5	3.00	64.26	8,975.0	610.8	1,266.7	0.00	0.00	0.00	0.00	



OXY

Planning Report - Geographic

Database:	HOPSP	Local Co-ordinate Reference:	Well CASCADE CREEK 697-09-39 - Slot CC#697-09-39
Company:	OXY USA MID-CON	TVD Reference:	WELL @ 8410.0surv ft (Original Well Elev)
Project:	GRAND VALLEY	MD Reference:	WELL @ 8410.0surv ft (Original Well Elev)
Site:	CASCADE CREEK 609-33 PAD	North Reference:	True
Well:	CASCADE CREEK 697-09-39	Survey Calculation Method:	Minimum Curvature
Wellbore:	CASCADE CREEK 697-09-39		
Design:	PLAN 2		

Planned Survey										
Measured Depth (surv ft)	Inclination (°)	Azimuth (°)	Vertical Depth (surv ft)	+N/-S (surv ft)	+E/-W (surv ft)	Map Northing (surv ft)	Map Easting (surv ft)	Latitude	Longitude	
0.0	0.00	0.00	0.0	0.0	0.0	631,269.26	1,232,517.36	39° 32' 6.325 N	108° 13' 17.342 W	
100.0	0.00	0.00	100.0	0.0	0.0	631,269.26	1,232,517.36	39° 32' 6.325 N	108° 13' 17.342 W	
200.0	0.00	0.00	200.0	0.0	0.0	631,269.26	1,232,517.36	39° 32' 6.325 N	108° 13' 17.342 W	
300.0	1.50	64.26	300.0	0.6	1.2	631,269.80	1,232,518.56	39° 32' 6.331 N	108° 13' 17.327 W	
400.0	3.00	64.26	399.9	2.3	4.7	631,271.39	1,232,522.15	39° 32' 6.348 N	108° 13' 17.282 W	
500.0	4.50	64.26	499.7	5.1	10.6	631,274.06	1,232,528.12	39° 32' 6.376 N	108° 13' 17.207 W	
600.0	6.00	64.26	599.3	9.1	18.8	631,277.78	1,232,536.48	39° 32' 6.415 N	108° 13' 17.101 W	
700.0	7.50	64.26	698.6	14.2	29.4	631,282.57	1,232,547.21	39° 32' 6.466 N	108° 13' 16.966 W	
800.0	9.00	64.26	797.5	20.4	42.4	631,288.41	1,232,560.32	39° 32' 6.527 N	108° 13' 16.801 W	
900.0	10.50	64.26	896.1	27.8	57.6	631,295.31	1,232,575.78	39° 32' 6.600 N	108° 13' 16.607 W	
1,000.0	12.00	64.26	994.2	36.3	75.2	631,303.25	1,232,593.60	39° 32' 6.684 N	108° 13' 16.382 W	
1,100.0	13.50	64.26	1,091.7	45.8	95.1	631,312.24	1,232,613.76	39° 32' 6.779 N	108° 13' 16.129 W	
1,200.0	15.00	64.26	1,188.6	56.5	117.2	631,322.26	1,232,636.24	39° 32' 6.884 N	108° 13' 15.846 W	
1,210.6	15.16	64.26	1,198.9	57.7	119.7	631,323.39	1,232,638.77	39° 32' 6.896 N	108° 13' 15.814 W	
1,300.0	15.16	64.26	1,285.1	67.9	140.8	631,332.90	1,232,660.11	39° 32' 6.996 N	108° 13' 15.545 W	
1,400.0	15.16	64.26	1,381.7	79.2	164.3	631,343.55	1,232,684.00	39° 32' 7.109 N	108° 13' 15.245 W	
1,500.0	15.16	64.26	1,478.2	90.6	187.9	631,354.20	1,232,707.88	39° 32' 7.221 N	108° 13' 14.944 W	
1,600.0	15.16	64.26	1,574.7	102.0	211.4	631,364.84	1,232,731.77	39° 32' 7.333 N	108° 13' 14.643 W	
1,700.0	15.16	64.26	1,671.2	113.3	235.0	631,375.49	1,232,755.65	39° 32' 7.445 N	108° 13' 14.343 W	
1,800.0	15.16	64.26	1,767.7	124.7	258.6	631,386.14	1,232,779.54	39° 32' 7.558 N	108° 13' 14.042 W	
1,900.0	15.16	64.26	1,864.3	136.0	282.1	631,396.79	1,232,803.42	39° 32' 7.670 N	108° 13' 13.741 W	
2,000.0	15.16	64.26	1,960.8	147.4	305.7	631,407.44	1,232,827.31	39° 32' 7.782 N	108° 13' 13.441 W	
2,100.0	15.16	64.26	2,057.3	158.8	329.2	631,418.08	1,232,851.19	39° 32' 7.895 N	108° 13' 13.140 W	
2,200.0	15.16	64.26	2,153.8	170.1	352.8	631,428.73	1,232,875.08	39° 32' 8.007 N	108° 13' 12.839 W	
2,300.0	15.16	64.26	2,250.3	181.5	376.3	631,439.38	1,232,898.96	39° 32' 8.119 N	108° 13' 12.539 W	
2,400.0	15.16	64.26	2,346.9	192.8	399.9	631,450.03	1,232,922.85	39° 32' 8.231 N	108° 13' 12.238 W	
2,500.0	15.16	64.26	2,443.4	204.2	423.4	631,460.68	1,232,946.73	39° 32' 8.344 N	108° 13' 11.937 W	
2,600.0	15.16	64.26	2,539.9	215.5	447.0	631,471.32	1,232,970.62	39° 32' 8.456 N	108° 13' 11.637 W	
2,700.0	15.16	64.26	2,636.4	226.9	470.6	631,481.97	1,232,994.50	39° 32' 8.568 N	108° 13' 11.336 W	
2,800.0	15.16	64.26	2,732.9	238.3	494.1	631,492.62	1,233,018.39	39° 32' 8.680 N	108° 13' 11.035 W	
2,900.0	15.16	64.26	2,829.5	249.6	517.7	631,503.27	1,233,042.27	39° 32' 8.793 N	108° 13' 10.735 W	
3,000.0	15.16	64.26	2,926.0	261.0	541.2	631,513.92	1,233,066.16	39° 32' 8.905 N	108° 13' 10.434 W	
3,100.0	15.16	64.26	3,022.5	272.3	564.8	631,524.56	1,233,090.04	39° 32' 9.017 N	108° 13' 10.133 W	
3,200.0	15.16	64.26	3,119.0	283.7	588.3	631,535.21	1,233,113.93	39° 32' 9.129 N	108° 13' 9.833 W	
3,300.0	15.16	64.26	3,215.5	295.1	611.9	631,545.86	1,233,137.81	39° 32' 9.242 N	108° 13' 9.532 W	
3,400.0	15.16	64.26	3,312.1	306.4	635.4	631,556.51	1,233,161.69	39° 32' 9.354 N	108° 13' 9.231 W	
3,500.0	15.16	64.26	3,408.6	317.8	659.0	631,567.15	1,233,185.58	39° 32' 9.466 N	108° 13' 8.931 W	
3,600.0	15.16	64.26	3,505.1	329.1	682.5	631,577.80	1,233,209.46	39° 32' 9.578 N	108° 13' 8.630 W	
3,700.0	15.16	64.26	3,601.6	340.5	706.1	631,588.45	1,233,233.35	39° 32' 9.691 N	108° 13' 8.329 W	
3,800.0	15.16	64.26	3,698.1	351.8	729.7	631,599.10	1,233,257.23	39° 32' 9.803 N	108° 13' 8.029 W	
3,900.0	15.16	64.26	3,794.7	363.2	753.2	631,609.75	1,233,281.12	39° 32' 9.915 N	108° 13' 7.728 W	
4,000.0	15.16	64.26	3,891.2	374.6	776.8	631,620.39	1,233,305.00	39° 32' 10.027 N	108° 13' 7.428 W	
4,100.0	15.16	64.26	3,987.7	385.9	800.3	631,631.04	1,233,328.89	39° 32' 10.140 N	108° 13' 7.127 W	
4,200.0	15.16	64.26	4,084.2	397.3	823.9	631,641.69	1,233,352.77	39° 32' 10.252 N	108° 13' 6.826 W	
4,300.0	15.16	64.26	4,180.7	408.6	847.4	631,652.34	1,233,376.66	39° 32' 10.364 N	108° 13' 6.526 W	
4,400.0	15.16	64.26	4,277.3	420.0	871.0	631,662.99	1,233,400.54	39° 32' 10.476 N	108° 13' 6.225 W	
4,500.0	15.16	64.26	4,373.8	431.4	894.5	631,673.63	1,233,424.43	39° 32' 10.589 N	108° 13' 5.924 W	
4,600.0	15.16	64.26	4,470.3	442.7	918.1	631,684.28	1,233,448.31	39° 32' 10.701 N	108° 13' 5.624 W	
4,700.0	15.16	64.26	4,566.8	454.1	941.7	631,694.93	1,233,472.20	39° 32' 10.813 N	108° 13' 5.323 W	
4,800.0	15.16	64.26	4,663.3	465.4	965.2	631,705.58	1,233,496.08	39° 32' 10.926 N	108° 13' 5.022 W	
4,900.0	15.16	64.26	4,759.9	476.8	988.8	631,716.23	1,233,519.97	39° 32' 11.038 N	108° 13' 4.722 W	
5,000.0	15.16	64.26	4,856.4	488.2	1,012.3	631,726.87	1,233,543.85	39° 32' 11.150 N	108° 13' 4.421 W	
5,010.6	15.16	64.26	4,866.7	489.4	1,014.8	631,728.01	1,233,546.39	39° 32' 11.162 N	108° 13' 4.389 W	
5,100.0	13.37	64.26	4,953.3	498.9	1,034.7	631,736.97	1,233,566.51	39° 32' 11.256 N	108° 13' 4.136 W	



OXY

Planning Report - Geographic

Database:	HOPSP	Local Co-ordinate Reference:	Well CASCADE CREEK 697-09-39 - Slot CC#697-09-39
Company:	OXY USA MID-CON	TVD Reference:	WELL @ 8410.0surv ft (Original Well Elev)
Project:	GRAND VALLEY	MD Reference:	WELL @ 8410.0surv ft (Original Well Elev)
Site:	CASCADE CREEK 609-33 PAD	North Reference:	True
Well:	CASCADE CREEK 697-09-39	Survey Calculation Method:	Minimum Curvature
Wellbore:	CASCADE CREEK 697-09-39		
Design:	PLAN 2		

Planned Survey										
Measured Depth (surv ft)	Inclination (°)	Azimuth (°)	Vertical Depth (surv ft)	+N/-S (surv ft)	+E/-W (surv ft)	Map Northing (surv ft)	Map Easting (surv ft)	Latitude	Longitude	
5,200.0	11.37	64.26	5,050.9	508.2	1,054.0	631,745.70	1,233,586.07	39° 32' 11.348 N	108° 13' 3.889 W	
5,300.0	9.37	64.26	5,149.3	516.0	1,070.2	631,753.03	1,233,602.52	39° 32' 11.426 N	108° 13' 3.682 W	
5,400.0	7.37	64.26	5,248.2	522.4	1,083.3	631,758.96	1,233,615.82	39° 32' 11.488 N	108° 13' 3.515 W	
5,500.0	5.37	64.26	5,347.6	527.2	1,093.3	631,763.47	1,233,625.95	39° 32' 11.536 N	108° 13' 3.387 W	
5,600.0	3.37	64.26	5,447.3	530.5	1,100.2	631,766.58	1,233,632.92	39° 32' 11.569 N	108° 13' 3.300 W	
5,618.6	3.00	64.26	5,465.9	531.0	1,101.1	631,767.00	1,233,633.86	39° 32' 11.573 N	108° 13' 3.288 W	
5,700.0	3.00	64.26	5,547.2	532.8	1,104.9	631,768.73	1,233,637.75	39° 32' 11.591 N	108° 13' 3.239 W	
5,800.0	3.00	64.26	5,647.0	535.1	1,109.6	631,770.86	1,233,642.53	39° 32' 11.614 N	108° 13' 3.179 W	
5,900.0	3.00	64.26	5,746.9	537.4	1,114.4	631,773.00	1,233,647.31	39° 32' 11.636 N	108° 13' 3.119 W	
6,000.0	3.00	64.26	5,846.7	539.6	1,119.1	631,775.13	1,233,652.09	39° 32' 11.659 N	108° 13' 3.058 W	
6,100.0	3.00	64.26	5,946.6	541.9	1,123.8	631,777.26	1,233,656.87	39° 32' 11.681 N	108° 13' 2.998 W	
6,103.4	3.00	64.26	5,950.0	542.0	1,123.9	631,777.33	1,233,657.03	39° 32' 11.682 N	108° 13' 2.996 W	
MESAVERDE										
6,200.0	3.00	64.26	6,046.5	544.2	1,128.5	631,779.39	1,233,661.65	39° 32' 11.704 N	108° 13' 2.938 W	
6,300.0	3.00	64.26	6,146.3	546.4	1,133.2	631,781.52	1,233,666.43	39° 32' 11.726 N	108° 13' 2.878 W	
6,303.7	3.00	64.26	6,150.0	546.5	1,133.4	631,781.60	1,233,666.61	39° 32' 11.727 N	108° 13' 2.876 W	
WILLAMSFORK										
6,400.0	3.00	64.26	6,246.2	548.7	1,137.9	631,783.65	1,233,671.21	39° 32' 11.749 N	108° 13' 2.818 W	
6,500.0	3.00	64.26	6,346.1	551.0	1,142.6	631,785.78	1,233,675.99	39° 32' 11.771 N	108° 13' 2.758 W	
6,600.0	3.00	64.26	6,445.9	553.3	1,147.4	631,787.91	1,233,680.77	39° 32' 11.794 N	108° 13' 2.697 W	
6,700.0	3.00	64.26	6,545.8	555.5	1,152.1	631,790.04	1,233,685.55	39° 32' 11.816 N	108° 13' 2.637 W	
6,800.0	3.00	64.26	6,645.7	557.8	1,156.8	631,792.17	1,233,690.33	39° 32' 11.838 N	108° 13' 2.577 W	
6,900.0	3.00	64.26	6,745.5	560.1	1,161.5	631,794.31	1,233,695.11	39° 32' 11.861 N	108° 13' 2.517 W	
7,000.0	3.00	64.26	6,845.4	562.4	1,166.2	631,796.44	1,233,699.89	39° 32' 11.883 N	108° 13' 2.457 W	
7,100.0	3.00	64.26	6,945.2	564.6	1,170.9	631,798.57	1,233,704.67	39° 32' 11.906 N	108° 13' 2.397 W	
7,200.0	3.00	64.26	7,045.1	566.9	1,175.6	631,800.70	1,233,709.45	39° 32' 11.928 N	108° 13' 2.336 W	
7,285.0	3.00	64.26	7,130.0	568.8	1,179.6	631,802.51	1,233,713.52	39° 32' 11.947 N	108° 13' 2.285 W	
TOP OF GAS										
7,300.0	3.00	64.26	7,145.0	569.2	1,180.3	631,802.83	1,233,714.23	39° 32' 11.951 N	108° 13' 2.276 W	
7,400.0	3.00	64.26	7,244.8	571.4	1,185.1	631,804.96	1,233,719.01	39° 32' 11.973 N	108° 13' 2.216 W	
7,500.0	3.00	64.26	7,344.7	573.7	1,189.8	631,807.09	1,233,723.79	39° 32' 11.996 N	108° 13' 2.156 W	
7,600.0	3.00	64.26	7,444.6	576.0	1,194.5	631,809.22	1,233,728.57	39° 32' 12.018 N	108° 13' 2.096 W	
7,700.0	3.00	64.26	7,544.4	578.3	1,199.2	631,811.35	1,233,733.35	39° 32' 12.041 N	108° 13' 2.035 W	
7,800.0	3.00	64.26	7,644.3	580.5	1,203.9	631,813.48	1,233,738.13	39° 32' 12.063 N	108° 13' 1.975 W	
7,900.0	3.00	64.26	7,744.1	582.8	1,208.6	631,815.62	1,233,742.91	39° 32' 12.086 N	108° 13' 1.915 W	
8,000.0	3.00	64.26	7,844.0	585.1	1,213.3	631,817.75	1,233,747.69	39° 32' 12.108 N	108° 13' 1.855 W	
8,100.0	3.00	64.26	7,943.9	587.4	1,218.1	631,819.88	1,233,752.47	39° 32' 12.131 N	108° 13' 1.795 W	
8,200.0	3.00	64.26	8,043.7	589.6	1,222.8	631,822.01	1,233,757.25	39° 32' 12.153 N	108° 13' 1.735 W	
8,300.0	3.00	64.26	8,143.6	591.9	1,227.5	631,824.14	1,233,762.03	39° 32' 12.175 N	108° 13' 1.674 W	
8,312.4	3.00	64.26	8,156.0	592.2	1,228.1	631,824.40	1,233,762.63	39° 32' 12.178 N	108° 13' 1.667 W	
L WILLAMSFORK										
8,400.0	3.00	64.26	8,243.5	594.2	1,232.2	631,826.27	1,233,766.81	39° 32' 12.198 N	108° 13' 1.614 W	
8,500.0	3.00	64.26	8,343.3	596.5	1,236.9	631,828.40	1,233,771.59	39° 32' 12.220 N	108° 13' 1.554 W	
8,600.0	3.00	64.26	8,443.2	598.7	1,241.6	631,830.53	1,233,776.37	39° 32' 12.243 N	108° 13' 1.494 W	
8,700.0	3.00	64.26	8,543.0	601.0	1,246.3	631,832.66	1,233,781.15	39° 32' 12.265 N	108° 13' 1.434 W	
8,800.0	3.00	64.26	8,642.9	603.3	1,251.1	631,834.79	1,233,785.93	39° 32' 12.288 N	108° 13' 1.374 W	
8,900.0	3.00	64.26	8,742.8	605.5	1,255.8	631,836.93	1,233,790.71	39° 32' 12.310 N	108° 13' 1.313 W	
8,982.3	3.00	64.26	8,825.0	607.4	1,259.7	631,838.68	1,233,794.65	39° 32' 12.329 N	108° 13' 1.264 W	
ROLLINS										
9,000.0	3.00	64.26	8,842.6	607.8	1,260.5	631,839.06	1,233,795.49	39° 32' 12.333 N	108° 13' 1.253 W	
9,100.0	3.00	64.26	8,942.5	610.1	1,265.2	631,841.19	1,233,800.27	39° 32' 12.355 N	108° 13' 1.193 W	
9,132.5	3.00	64.26	8,975.0	610.8	1,266.7	631,841.88	1,233,801.83	39° 32' 12.362 N	108° 13' 1.173 W	



OXY
Planning Report - Geographic

Database:	HOPSP	Local Co-ordinate Reference:	Well CASCADE CREEK 697-09-39 - Slot CC#697-09-39
Company:	OXY USA MID-CON	TVD Reference:	WELL @ 8410.0surv ft (Original Well Elev)
Project:	GRAND VALLEY	MD Reference:	WELL @ 8410.0surv ft (Original Well Elev)
Site:	CASCADE CREEK 609-33 PAD	North Reference:	True
Well:	CASCADE CREEK 697-09-39	Survey Calculation Method:	Minimum Curvature
Wellbore:	CASCADE CREEK 697-09-39		
Design:	PLAN 2		

Design Targets									
Target Name									
- hit/miss target	Dip Angle	Dip Dir.	TVD	+N/-S	+E/-W	Northing	Easting	Latitude	Longitude
- Shape	(°)	(°)	(surv ft)	(surv ft)	(surv ft)	(surv ft)	(surv ft)		
697-09-39	357.00	64.26	8,156.0	592.2	1,228.1	631,824.40	1,233,762.63	39° 32' 12.178 N	108° 13' 1.667 W
- plan hits target center									
- Circle (radius 50.0)									

Formations						
Measured Depth	Vertical Depth					
(surv ft)	(surv ft)	Name	Lithology	Dip	Dip Direction	
				(°)	(°)	
6,103.4	5,950.0	MESAVERDE		0.00		
6,303.7	6,150.0	WILLAIMSFORK		0.00		
7,285.0	7,130.0	TOP OF GAS		0.00		
8,312.4	8,156.0	L WILLAIMSFORK		0.00		
8,982.3	8,825.0	ROLLINS		0.00		