

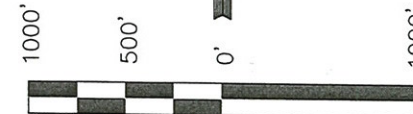
T12N, R97W, 6th P.M.

WEXPRO COMPANY

Well location, POWDER WASH #20-2, located as shown in the SW 1/4 SW 1/4 of Section 20, T12N, R97W, 6th P.M. Moffat County, Colorado.

BASIS OF ELEVATION

SPOT LOCATION LOCATED AT THE SOUTHEAST CORNER OF SECTION 4, T11N, R97W, 6th P.M. TAKEN FROM THE POWDER WASH QUADRANGLE, COLORADO, MOFFAT COUNTY, 7.5 MINUTE SERIES (TOPOGRAPHICAL MAP) PUBLISHED BY THE UNITED STATES DEPARTMENT OF THE INTERIOR, GEOLOGICAL SURVEY. SAID ELEVATION IS MARKED AS BEING 6644 FEET.



SCALE

CERTIFICATE

THIS IS TO CERTIFY THAT THE ABOVE PLAT WAS PREPARED FROM FIELD NOTES OF ACTUAL SURVEYS MADE BY ME OR UNDER MY SUPERVISION AND THAT THE SAME ARE TRUE AND CORRECT TO THE BEST OF MY KNOWLEDGE AND BELIEF.

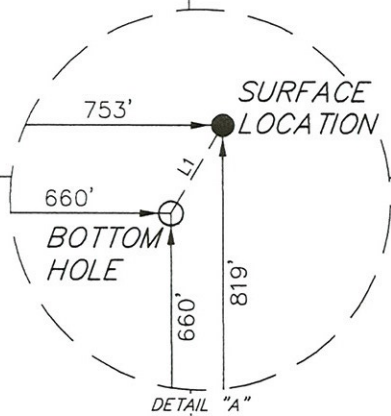
Robert L. ...
REGISTERED LAND SURVEYOR
REGISTRATION NO. 17492
STATE OF COLORADO

REVISED: 04-08-10 S.L.
REVISED: 11-05-09 L.K.
REVISED: 11-02-09 L.K.
REVISED: 07-02-09 L.K.

UTAH ENGINEERING & LAND SURVEYING
85 SOUTH 200 EAST - VERNAL, UTAH 84078
(435) 789-1017

N89°58'E - 5282.64' (G.L.O.)

2008 Alum. Cap,
Lat: 40.993014
Long: 108.325489



NOTE:
SEE ADDENDUM TO LEGAL PLAT FOR
EXISTING IMPROVEMENTS WITHIN 400'
OF THE PROPOSED WELL DISTURBANCE.

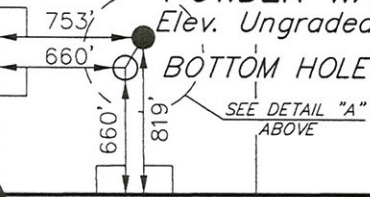
20

BASIS OF BEARINGS

BASIS OF BEARINGS IS A G.P.S. OBSERVATION.

LINE TABLE		
LINE	BEARING	LENGTH
L1	S30°15'20"W	183.94'

POWDER WASH #20-2
Elev. Ungraded Ground = 6626'



Set Marked Stone,
0.7' High, Fence
Corner
Lat: 40.978539
Long: 108.315792

Set Marked Stone,
0.8' High, Pile of
Stones, T-Post
Lat: 40.978519
Long: 108.325472

WEST - 2638.68' (G.L.O.)

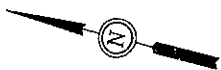
LEGEND:

- └─ = 90° SYMBOL
- = PROPOSED WELL HEAD.
- ▲ = SECTION CORNERS LOCATED.

PDOP = 3.2

NAD 83 (TARGET BOTTOM HOLE)		NAD 83 (SURFACE LOCATION)	
LATITUDE = 40°58'49.21" (40.980336)		LATITUDE = 40°58'50.78" (40.980772)	
LONGITUDE = 108°19'23.11" (108.323086)		LONGITUDE = 108°19'21.90" (108.322750)	
NAD 27 (TARGET BOTTOM HOLE)		NAD 27 (SURFACE LOCATION)	
LATITUDE = 40°58'49.34" (40.980372)		LATITUDE = 40°58'50.91" (40.980808)	
LONGITUDE = 108°19'20.76" (108.322433)		LONGITUDE = 108°19'19.55" (108.322097)	

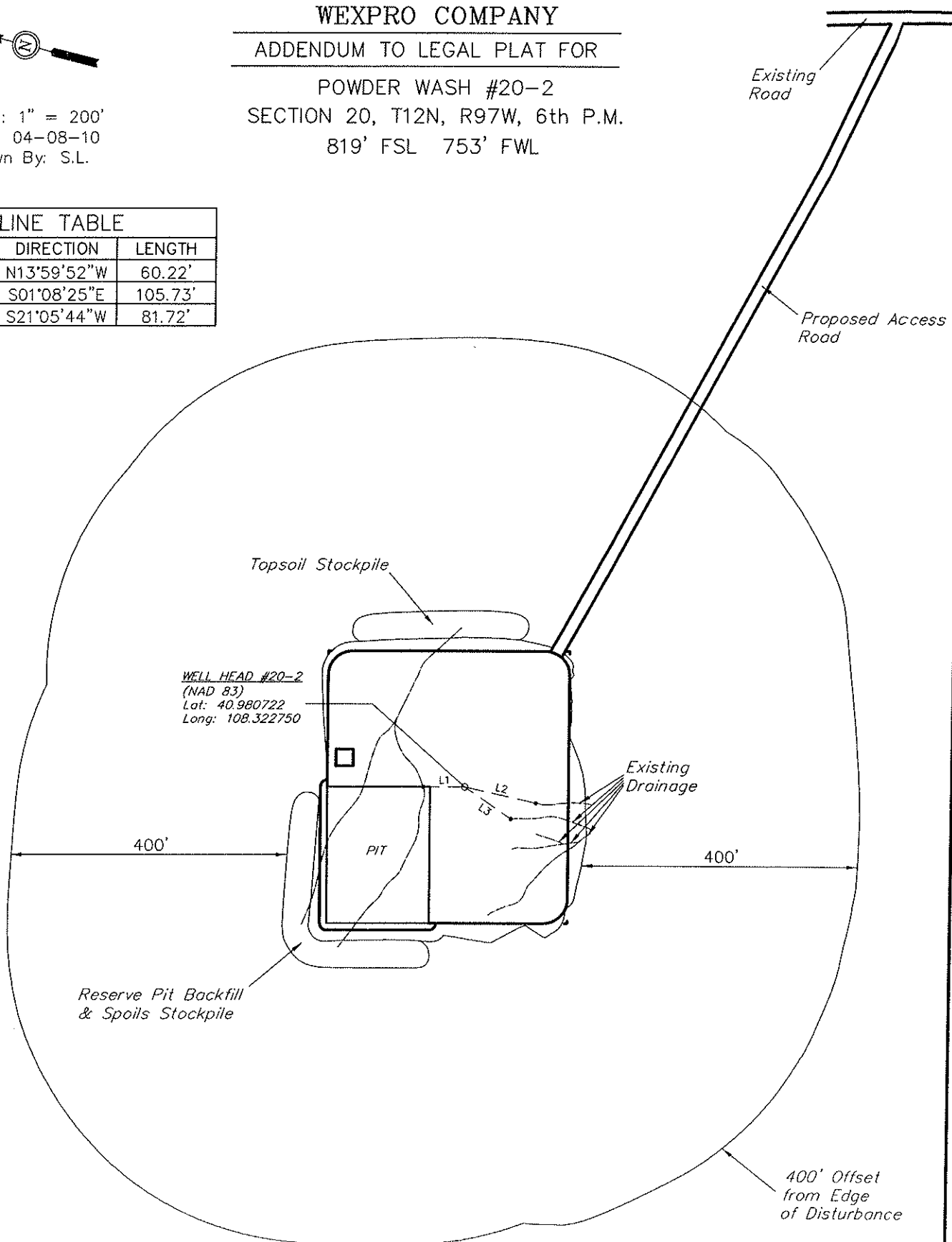
SCALE 1" = 1000'	DATE SURVEYED: 08-08-08	DATE DRAWN: 08-15-08
PARTY D.C. K.M. S.L.	REFERENCES G.L.O. PLAT	
WEATHER WARM	FILE WEXPRO COMPANY	



SCALE: 1" = 200'
DATE: 04-08-10
Drawn By: S.L.

WEXPRO COMPANY
ADDENDUM TO LEGAL PLAT FOR
POWDER WASH #20-2
SECTION 20, T12N, R97W, 6th P.M.
819' FSL 753' FWL

LINE TABLE		
LINE	DIRECTION	LENGTH
L1	N13°59'52"W	60.22'
L2	S01°08'25"E	105.73'
L3	S21°05'44"W	81.72'



SURFACE USE OF LOCATION IS
GRAZING, VEGETATION CONSISTS
MAINLY OF SAGE BRUSH AND
NATIVE GRASSES