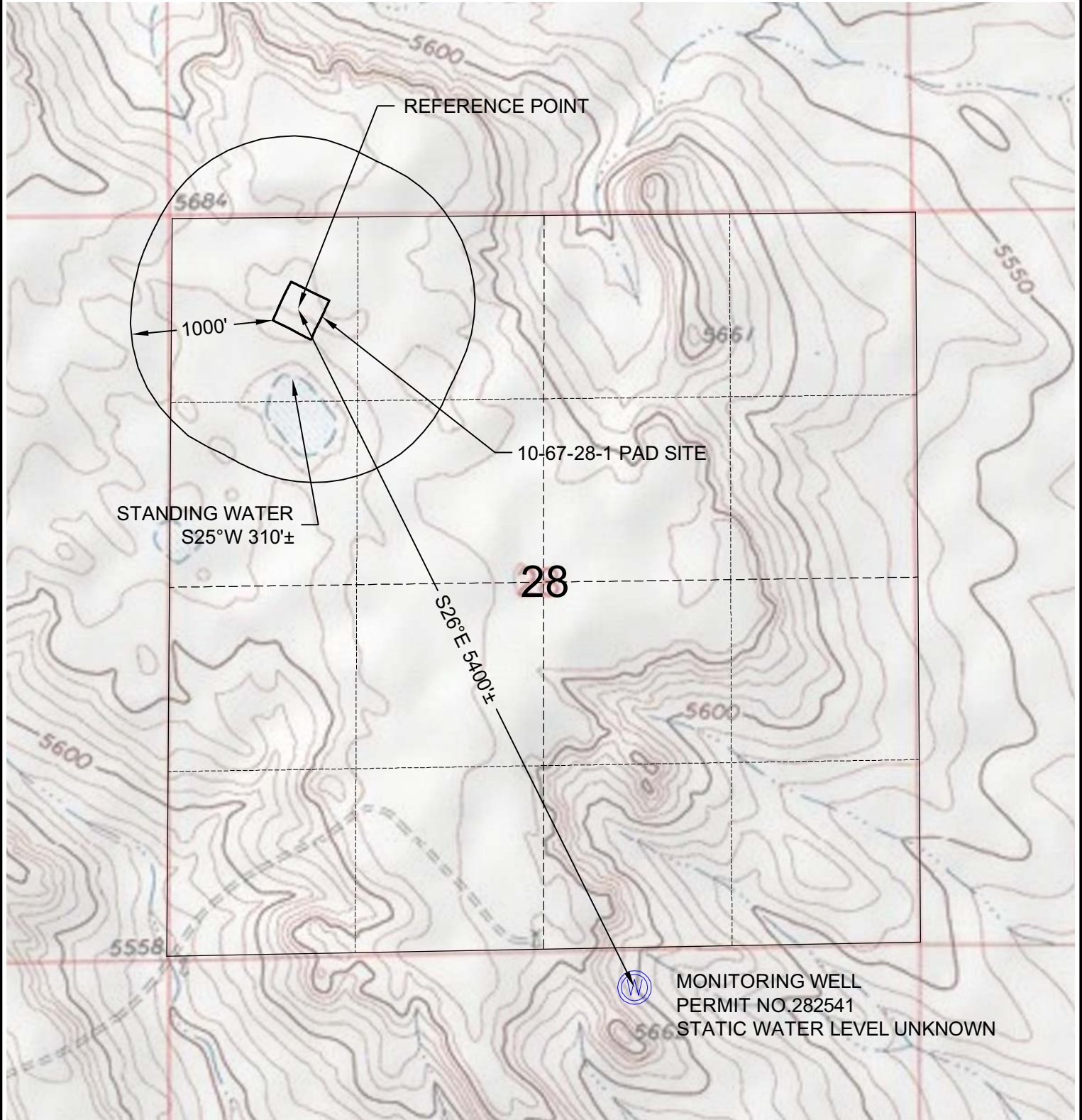
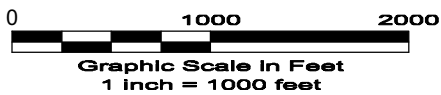


HYDROLOGY MAP



DWG: G:\GEO SURV\2009\09035\Wellplats\2010 Wells\ Pawnee 10-67-28-1\10-67-28-1 F2A.dwg USER: Owner DATE: Apr 12, 2010 1:40pm



GEO SURV
LAND SURVEYING AND MAPPING
LAFAYETTE - WINTER PARK
Ph 303 666 0379 Fx 303 665 6320

4/12/10

RUBICON OIL & GAS LLC
PAWNEE 10-67-28-1

NW1/4 NW1/4 SEC. 28 T10N R67W
6th PM WELD COUNTY COLORADO