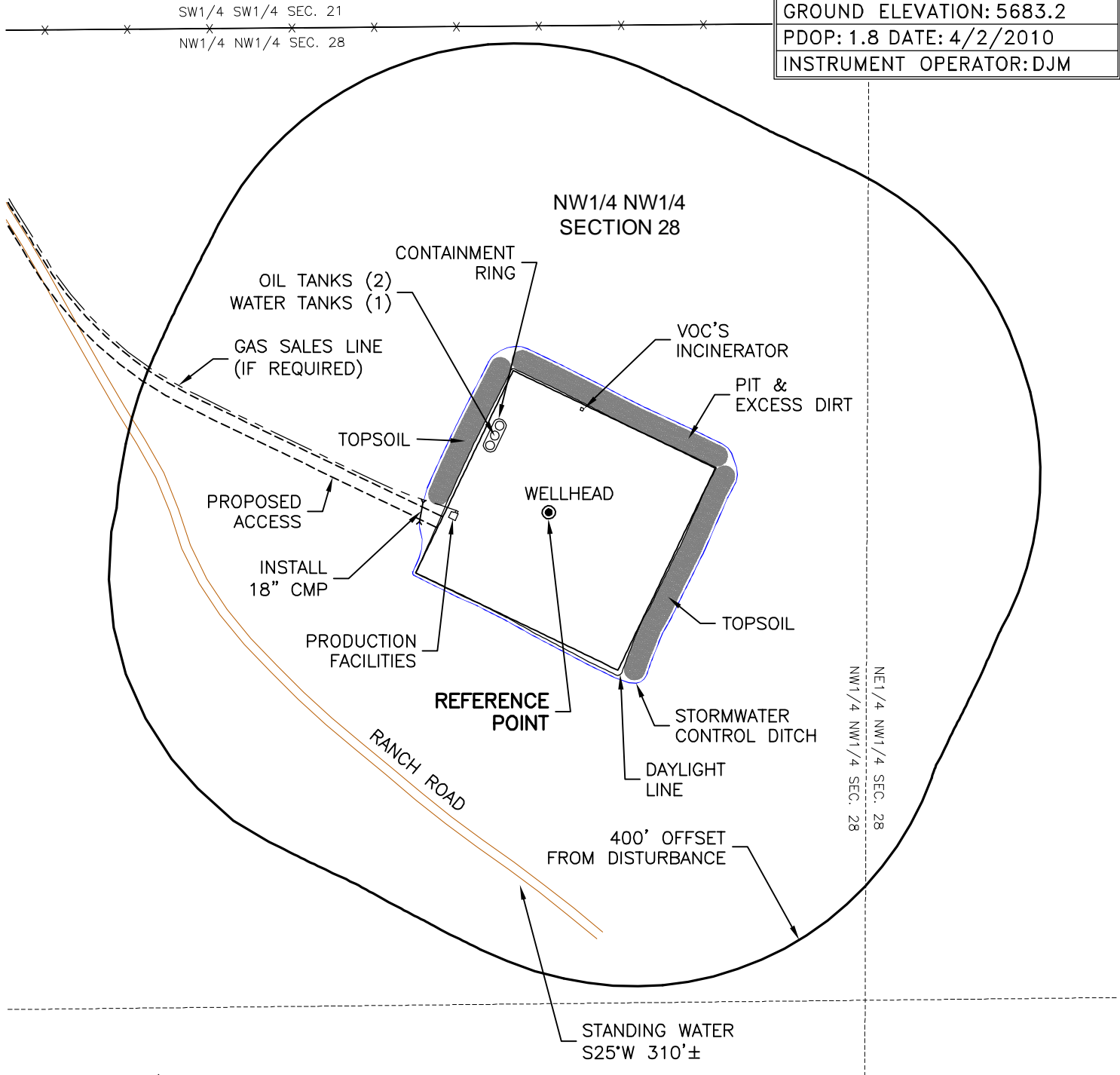


**VEGETATION:**  
PASTURE-GRASSES

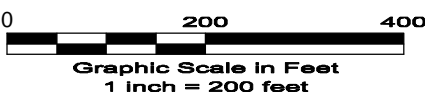
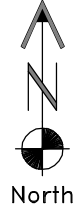
**SURFACE USE:**  
AGRICULTURAL  
IMPROVED PASTURE

# LOCATION DRAWING

REFERENCE POINT	
LATITUDE:	40.810435
LONGITUDE:	-104.902240
FOOTAGE:	650 FNL 896 FWL
GROUND ELEVATION:	5683.2
PDOP:	1.8 DATE: 4/2/2010
INSTRUMENT OPERATOR: DJM	



DWG: G:\GEO SURV\2009\09035\Wellplats\2010 Wells\ Pawnee 10-67-28-1\10-67-28-1 F2A.dwg USER: Owner DATE: Apr 12, 2010 1:40pm



**DISTURBANCE ACREAGE:**  
3.0± DRILLING OPERATIONS  
1.0± INTERIM RECLAIM  
4/12/10

**GEO SURV**

LAND SURVEYING AND MAPPING  
LAFAYETTE - WINTER PARK  
Ph 303 666 0379 Fx 303 665 6320

**RUBICON OIL & GAS LLC**  
PAWNEE 10-67-28-1

NW1/4 NW1/4 SEC. 28 T10N R67W  
6th PM WELD COUNTY COLORADO