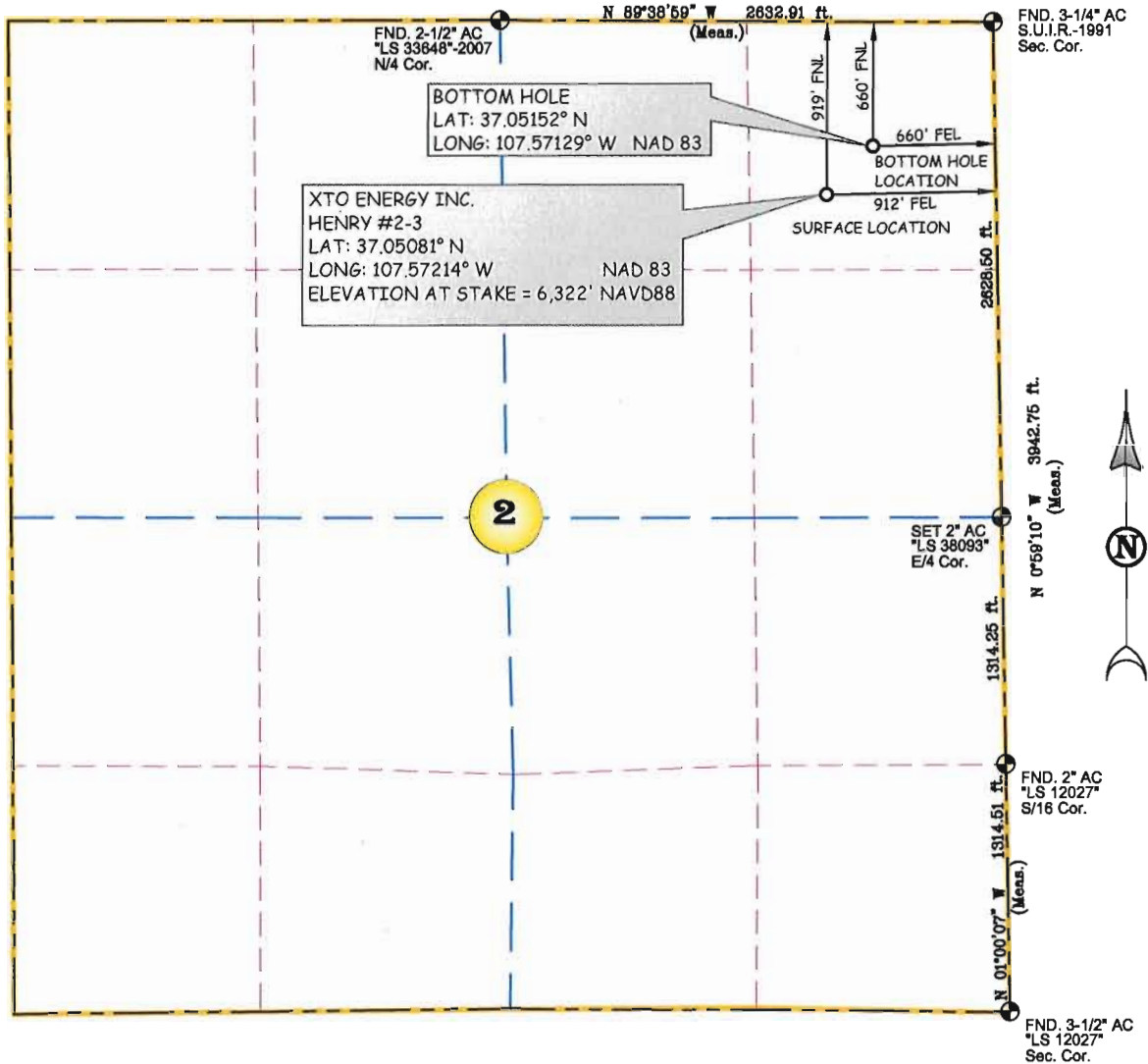


**XTO ENERGY INC.
HENRY #2-3**

SURFACE HOLE: 919' FNL, 912' FEL,
LAT: 37.05081° N LONG: 107.57214° W NAD 83
LAT: 37.05081° N LONG: 107.57153° W NAD 27
BOTTOM HOLE LOCATION: 660' FNL, 660' FEL,
LAT: 37.05152° N LONG: 107.57129° W NAD 83
SECTION 2, T-32-N, R-07-W, N.M.P.M.,
LA PLATA COUNTY, COLORADO
ELEVATION AT STAKE = 6,322' NAVD 88



NOTES:

1. SURFACE USE IS EXISTING WELL LOCATION AND AGRICULTURAL.
2. SEE ATTACHED ADDENDUM FOR IMPROVEMENTS, AND PROPERTY LINES WITHIN 200' OF BORE.
3. THERE ARE NO PUBLIC ROADS OR PROPERTY BOUNDARY LINES WITHIN 150' OF THE ACTUAL WELL BORE LOCATION - SEE ADDENDUM.
4. DATE OF SURVEY 4/07/10
5. BASIS OF ELEVATION = NAVD88 AS PREDICTED BY GEIOD03.
6. GPS POSITIONING COLLECTED BY PDOP VALUE OF 6 OR LESS.
7. LOCATION OFFSETS TO SECTION LINE MEASURED AT 90° TO SECTION LINE.
8. THERE ARE NO DWELLING STRUCTURES WITHIN 400' OF THE PERIMETER OF THE WELL PAD - SEE ADDENDUM.
9. THERE ARE NO PLATTED SUBDIVISION LOT LINES WITHIN 200' OF THE PERIMETER OF THE WELL PAD - SEE ADDENDUM.

THIS IS TO CERTIFY THAT THE ABOVE PLAT WAS PREPARED FROM FIELD NOTES OF ACTUAL SURVEYS MADE BY ME OR UNDER MY DIRECT SUPERVISION AND THAT THE SAME ARE TRUE AND CORRECT TO THE BEST OF MY KNOWLEDGE AND BELIEF.

Randy D. Russell
RANDY D. RUSSELL LICENSE NO. 38093 DATE
STATE OF COLORADO



500' 0 500' 1000'
1 inch equals 1,000 feet

BASIS OF BEARING = BETWEEN MONUMENTS FOUND AT THE NORTHEAST CORNER AND THE NORTH QUARTER CORNER OF SECTION 2, T-32-N, R-07-W, N.M.P.M., COLORADO, LINE BEARS N 89°38'59" W BY GPS MEASUREMENT.



Russell Surveying, Inc.
1409 W. Aztec Blvd. #2
Aztec, New Mexico 87410
(505) 334-8637

JOB# XT0013 DATE: 04/20/10 BY: GRR