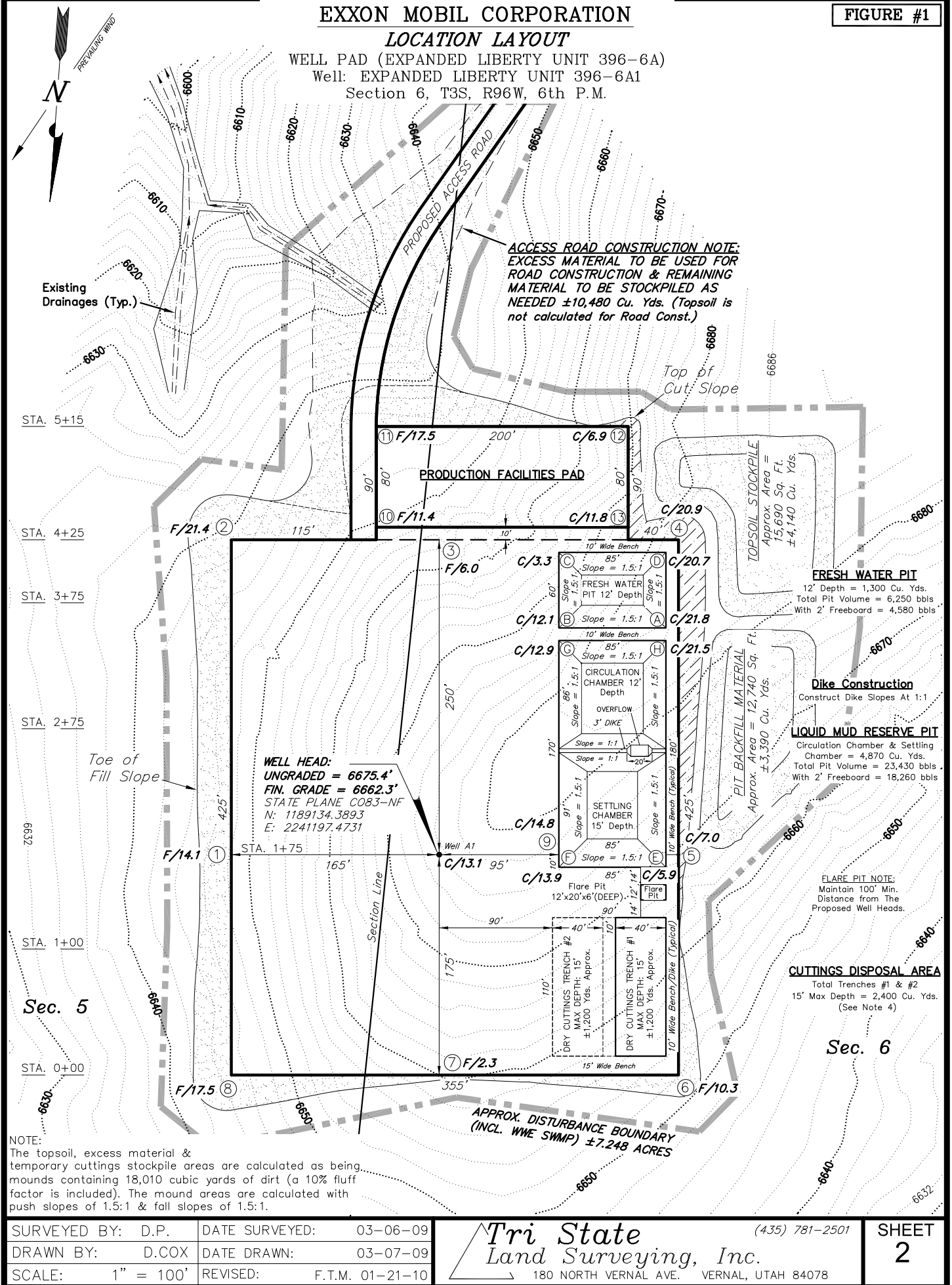


WELL PAD (EXPANDED LIBERTY UNIT 396-6A)
Well: EXPANDED LIBERTY UNIT 396-6A1
Section 6, T3S, R96W, 6th P.M.



SURVEYED BY: D.P.	DATE SURVEYED: 03-06-09
DRAWN BY: D.COX	DATE DRAWN: 03-07-09
SCALE: 1" = 100'	REVISED: F.T.M. 01-21-10

Tri State (435) 781-2111
Land Surveying, Inc.
180 NORTH VERNAL AVE. VERNAL, UTAH 84078

EXXON MOBIL CORPORATION

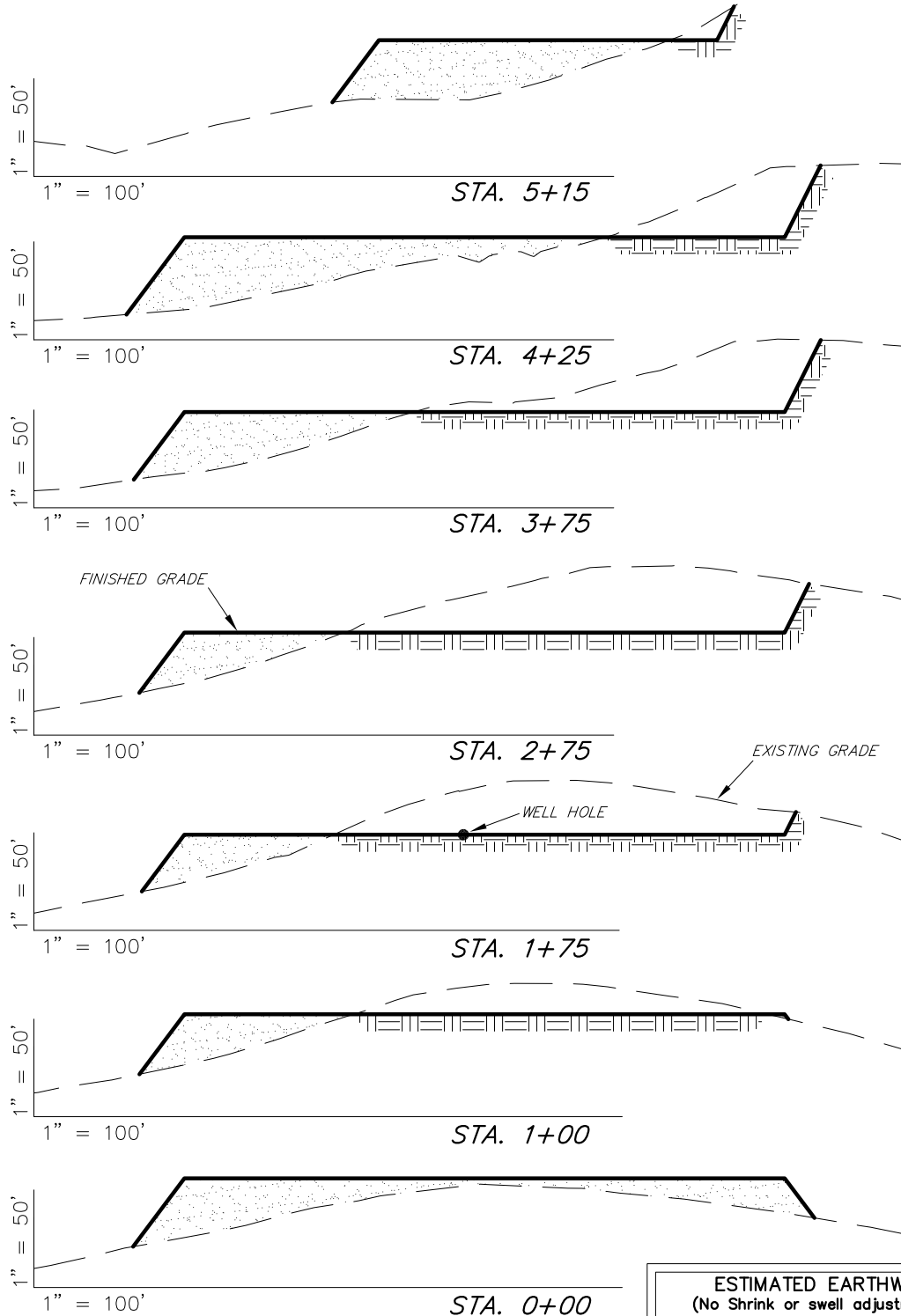
FIGURE #2

CROSS SECTIONS

WELL PAD (EXPANDED LIBERTY UNIT 396-6A)

Well: EXPANDED LIBERTY UNIT 396-6A1

Section 6, T3S, R96W, 6th P.M.



* 1,110 CU. YDS. OF MATERIAL IS REQUIRED TO BE EXCAVATED & STOCKPILED TO COMPLETE THE FINISH GRADING PLAN AS SHOWN ON SHEET 5.

NOTE:
UNLESS OTHERWISE NOTED CUT SLOPES
ARE AT 1:1 & FILL SLOPES ARE AT 1.5:1

ESTIMATED EARTHWORK QUANTITIES (No Shrink or swell adjustments have been used) (Expressed in Cubic Yards)

ITEM	CUT	FILL	6" TOPSOIL	EXCESS
FINISH GRADING	*1,460	*350	Topsoil is not included in Pad Cut	*1,110
PITS	6,170	0		6,170
PAD	36,380	31,050		5,330
TOTALS	44,010	31,400	3,760	12,610

SURVEYED BY: D.P. DATE SURVEYED: 03-06-09
DRAWN BY: D.COX DATE DRAWN: 03-07-09
SCALE: 1" = 100' REVISED: F.T.M. 01-21-10

Tri State
Land Surveying, Inc.
180 NORTH VERNAL AVE. VERNAL, UTAH 84078
(435) 781-2501

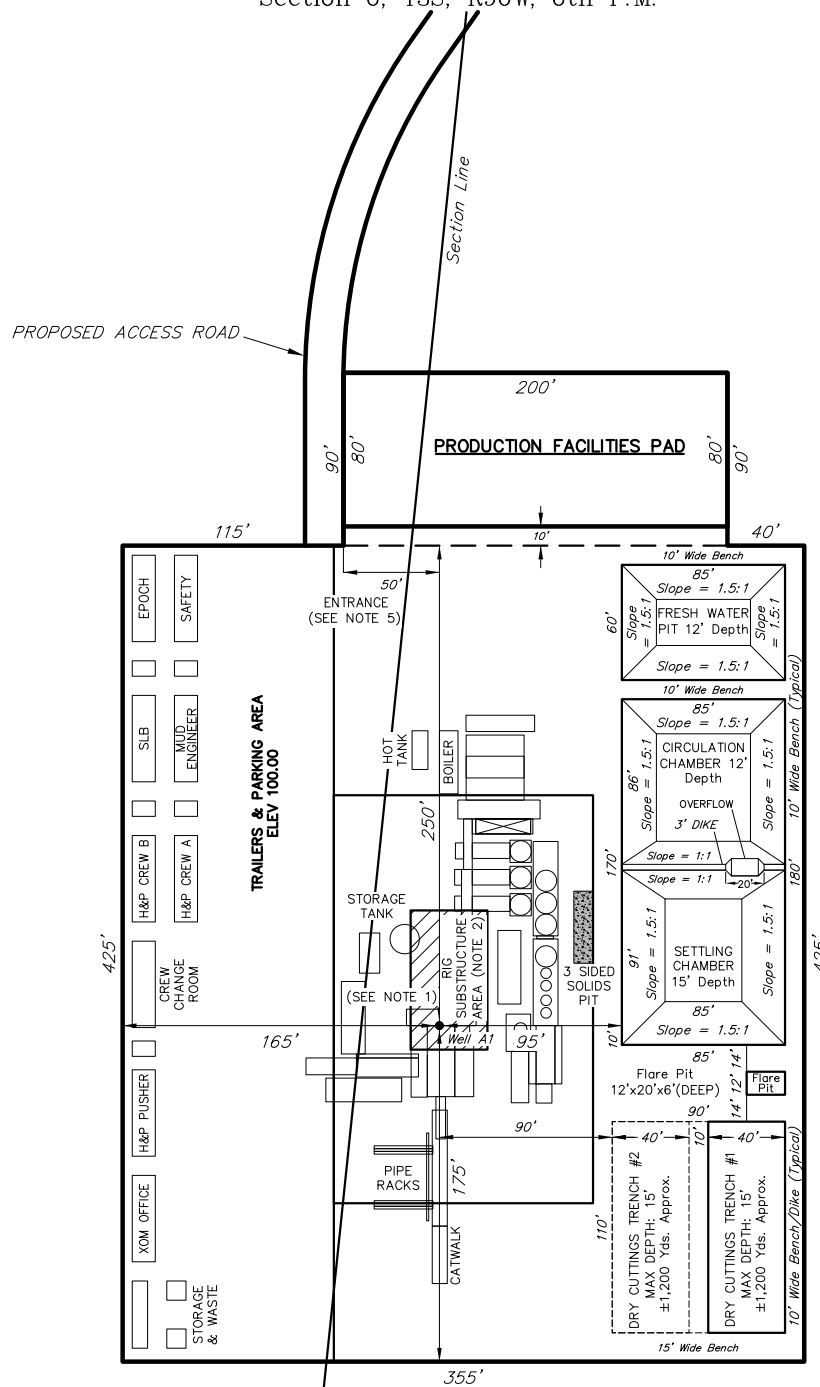
SHEET
3

TYPICAL RIG LAYOUT

WELL PAD (EXPANDED LIBERTY UNIT 396-6A)

Well: EXPANDED LIBERTY UNIT 396-6A1

Section 6, T3S, R96W, 6th P.M.



FRESH WATER PIT

12' Depth = 1,300 Cu. Yds.
Total Pit Volume = 6,250 bbls
With 2' Freeboard = 4,580 bbls

Dike Construction

Construct Dike Slopes At 1:1

LIQUID MUD RESERVE PIT

Circulation Chamber & Settling Chamber = 4,870 Cu. Yds.
Total Pit Volume = 23,430 bbls
With 2' Freeboard = 18,260 bbls

FLARE PIT NOTE:
Maintain 100' Min.
Distance from The
Proposed Well Heads.

CUTTINGS DISPOSAL AREA

Total Trenches #1 & #2
15' Max Depth = 2,400 Cu. Yds.
(See Note 4)

SURVEYED BY: D.P.	DATE SURVEYED: 03-06-09
DRAWN BY: D.COX	DATE DRAWN: 03-07-09
SCALE: 1" = 100'	REVISED: F.T.M. 01-21-10

Tri State
Land Surveying, Inc.
180 NORTH VERNAL AVE. VERNAL, UTAH 84078
(435) 781-2501

FIGURE #4

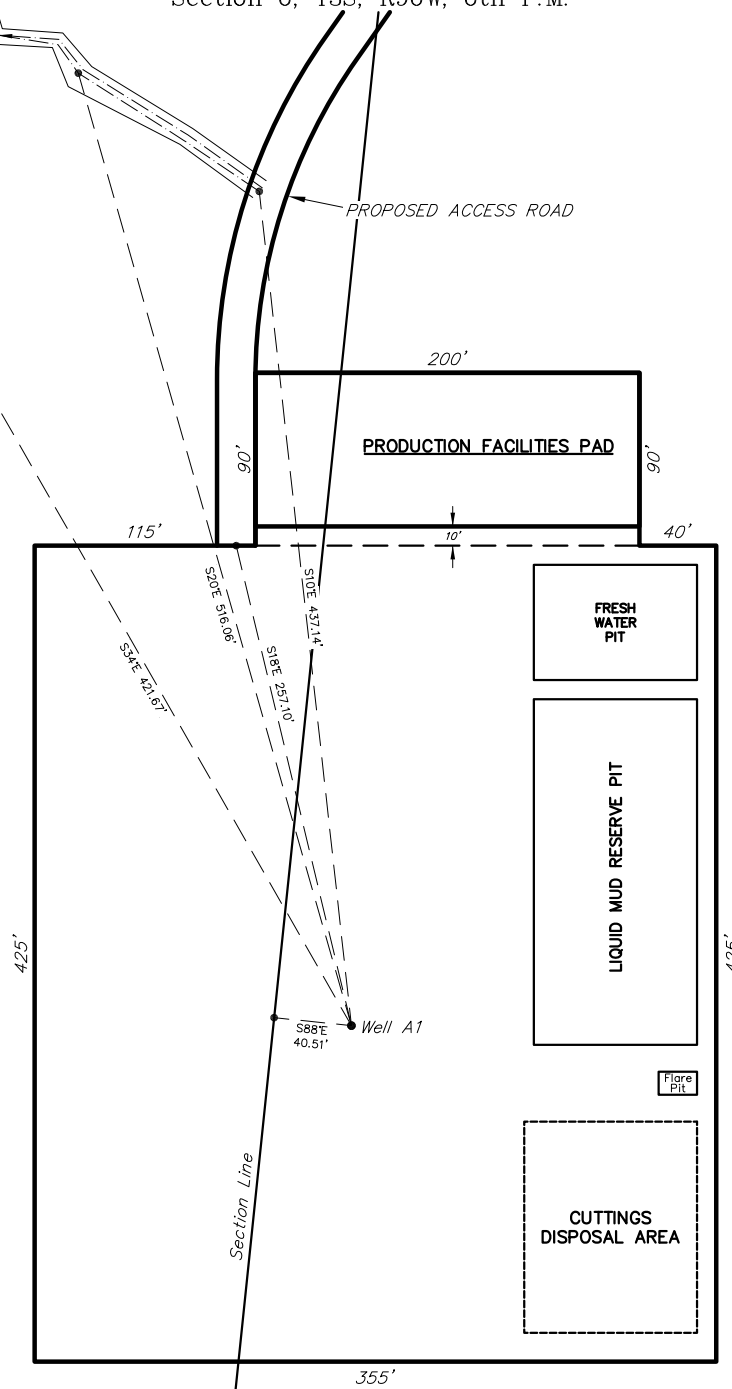
Section 6, T3S, R96W, 6th P.M.

SHEET
5

EXXON MOBIL CORPORATION
ADDENDUM TO LEGAL PLATS FOR
WELL PAD (EXPANDED LIBERTY UNIT 396-6A)
Well: EXPANDED LIBERTY UNIT 396-6A1
Section 6, T3S, R96W, 6th P.M.

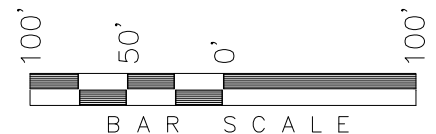
Existing
Drainages (Typ.)

PROPOSED ACCESS ROAD



FLARE PIT NOTE:
Maintain 100' Min.
Distance from The
Proposed Well Heads.

SURFACE USE NOTE:
Surface use of the well site is grazing.
Vegetation consists mainly of Pinion Trees,
Juniper Trees, Sagebrush & Native Grasses.



SURVEYED BY: D.P.	DATE SURVEYED: 03-06-09
DRAWN BY: D.COX	DATE DRAWN: 03-07-09
SCALE: 1" = 100'	REVISED: F.T.M. 01-21-10

Tri State
Land Surveying, Inc.
180 NORTH VERNAL AVE. VERNAL, UTAH 84078
(435) 781-2501

SHEET
1b