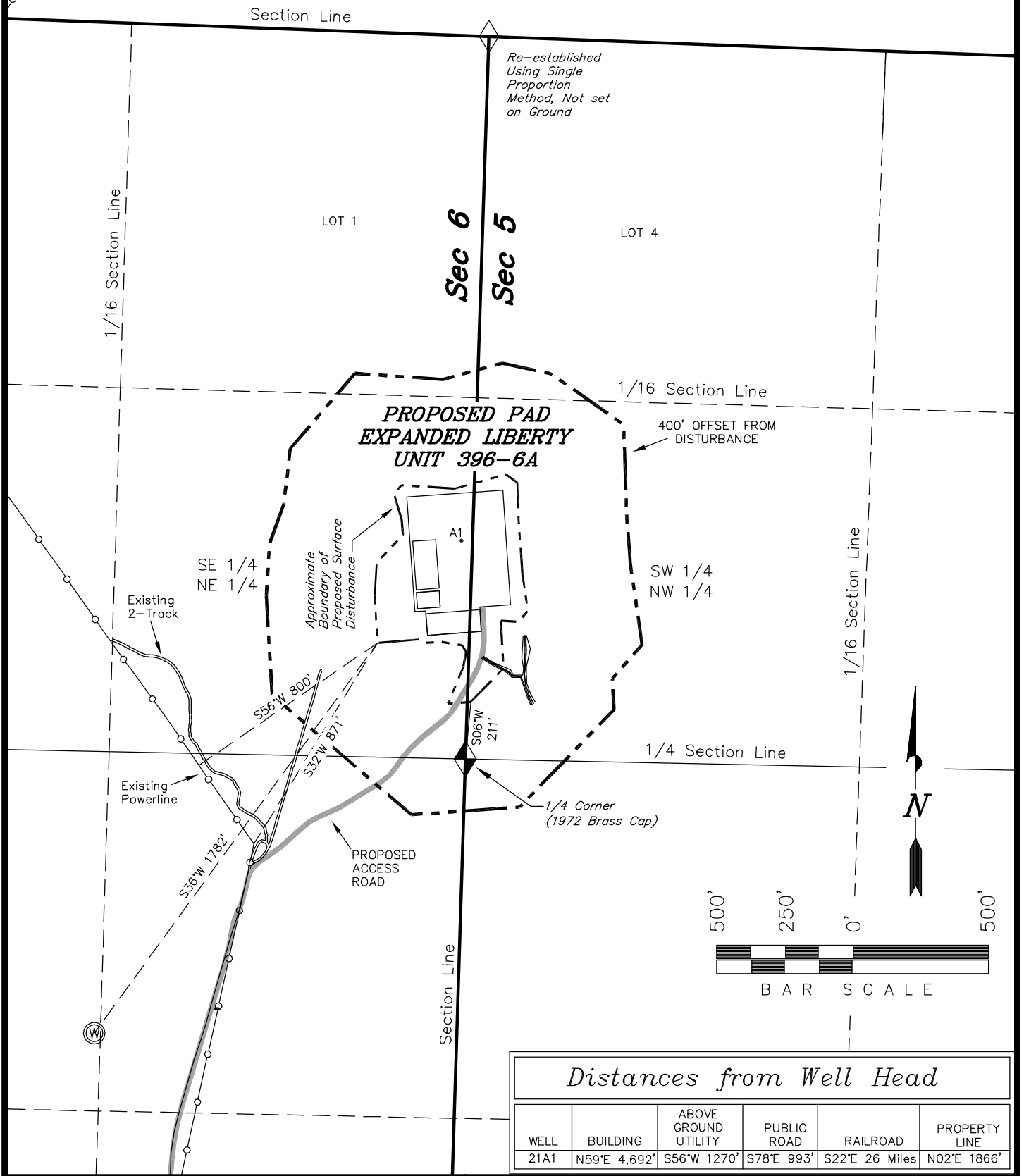


Exxon Mobil Corporation
ADDENDUM TO LEGAL PLATS FOR
WELL PAD (EXPANDED LIBERTY UNIT 396-6A)
EXPANDED LIBERTY UNIT 396-6A1
Section 6, T3S, R96W, 6th P.M.



Distances from Well Head

WELL	BUILDING	ABOVE GROUND UTILITY	PUBLIC ROAD	RAILROAD	PROPERTY LINE
21A1	N59°E 4,692'	S56°W 1270'	S78°E 993'	S22°E 26 Miles	N02°E 1866'

SURVEYED BY: D.P.	SURVEY DATE: 04-29-08
DRAWN BY: F.T.M.	DATE DRAWN: 01-18-10
SCALE: 1" = 500'	REVISED: 08-30-10

Tri State
Land Surveying, Inc.
180 NORTH VERNAL AVE. VERNAL, UTAH 84078
(435) 781-2501

SHEET
1bb