
BILL BARRETT CORPORATION E-BILL

**GGU FEDERAL 34B-29-691
MAMM CREEK
Garfield County , Colorado**

Cement Surface Casing
27-Aug-2010

Post Job Report

The Road to Excellence Starts with Safety

Sold To #: 343492		Ship To #: 2802127		Quote #:		Sales Order #: 7579379	
Customer: BILL BARRETT CORPORATION E-BILL				Customer Rep: South, Jodi			
Well Name: GGU FEDERAL			Well #: 34B-29-691			API/UWI #: 05-045-19627	
Field: MAMM CREEK		City (SAP): RIFLE		County/Parish: Garfield			State: Colorado
Lat: N 39.497 deg. OR N 39 deg. 29 min. 47.918 secs.				Long: W 107.576 deg. OR W -108 deg. 25 min. 27.03 secs.			
Contractor: BARRETT			Rig/Platform Name/Num: PETRO PLUS				
Job Purpose: Cement Surface Casing							
Well Type: Development Well				Job Type: Cement Surface Casing			
Sales Person: METLI, MARSHALL			Srvc Supervisor: CALDWELL, JEFFREY			MBU ID Emp #: 369111	

Job Personnel

HES Emp Name	Exp Hrs	Emp #	HES Emp Name	Exp Hrs	Emp #	HES Emp Name	Exp Hrs	Emp #
ARNOLD, EDWARD John	5	439784	CALDWELL, JEFFREY S	5	369111	GAMBLE, BENJAMIN T	5	446666
HAYES, JESSE Doug	5	403601						

Equipment

HES Unit #	Distance-1 way	HES Unit #	Distance-1 way	HES Unit #	Distance-1 way	HES Unit #	Distance-1 way
10565341	120 mile	10804567	120 mile	10951249	120 mile	11360871	120 mile
11542767	120 mile						

Job Hours

Date	On Location Hours	Operating Hours	Date	On Location Hours	Operating Hours	Date	On Location Hours	Operating Hours
08-27-10	5	5						

TOTAL Total is the sum of each column separately

Job

Formation Name	Top	Bottom	Called Out	Date	Time	Time Zone
Formation Depth (MD)			On Location	27 - Aug - 2010	04:00	MST
Form Type		BHST	On Location	27 - Aug - 2010	00:00	MST
Job depth MD	807. ft	Job Depth TVD	Job Started	27 - Aug - 2010	10:54	MST
Water Depth		Wk Ht Above Floor	Job Completed	27 - Aug - 2010	11:38	MST
Perforation Depth (MD)	From	To	Departed Loc	27 - Aug - 2010	13:00	MST

Well Data

Description	New / Used	Max pressure psig	Size in	ID in	Weight lbm/ft	Thread	Grade	Top MD ft	Bottom MD ft	Top TVD ft	Bottom TVD ft
-------------	------------	-------------------	---------	-------	---------------	--------	-------	-----------	--------------	------------	---------------

Sales/Rental/3rd Party (HES)

Description	Qty	Qty uom	Depth	Supplier
PLUG,CMTG,TOP,9 5/8,HWE,8.16 MIN/9.06 MA	1	EA		
R/A DENSOMETER W/CHART RECORDER,/JOB,ZI	1	JOB		
PORT. DATA ACQUIS. W/OPTICEM RT W/HES	1	EA		
ADC (AUTO DENSITY CTRL) SYS, /JOB,ZI	1	JOB		

Tools and Accessories

Type	Size	Qty	Make	Depth	Type	Size	Qty	Make	Depth	Type	Size	Qty	Make
Guide Shoe					Packer					Top Plug	9.625	1	
Float Shoe					Bridge Plug					Bottom Plug			
Float Collar					Retainer					SSR plug set			
Insert Float										Plug Container	9.625	1	
Stage Tool										Centralizers			

Miscellaneous Materials

Gelling Agt	Conc	Surfactant	Conc	Acid Type	Qty	Conc	%
Treatment Fld	Conc	Inhibitor	Conc	Sand Type	Size	Qty	

Fluid Data											
Stage/Plug #: 1											
Fluid #	Stage Type	Fluid Name	Qty	Qty uom	Mixing Density lbm/gal	Yield ft ³ /sk	Mix Fluid Gal/sk	Rate bbl/min	Total Mix Fluid Gal/sk		
1	Water Spacer		20	bbl	.	.0	.0	5.0			
2	Lead Cement	VERSACEM (TM) SYSTEM (452010)	120	sacks	12.3	2.38	13.75	5	13.75		
		13.75 Gal	FRESH WATER								
3	Tail Cement	SWIFTCES (TM) SYSTEM (452990)	120	sacks	14.2	1.43	6.88	5	6.72		
		6.715 Gal	FRESH WATER								
4	Displacement		57.5	bbl	.	.0	.0	5.0			
Calculated Values			Pressures			Volumes					
Displacement	57.5	Shut In: Instant			Lost Returns			Cement Slurry	81.5	Pad	
Top Of Cement	SURFACE	5 Min			Cement Returns	19	Actual Displacement	57.5	Treatment		
Frac Gradient		15 Min			Spacers	20	Load and Breakdown		Total Job	160	
Rates											
Circulating			Mixing	5		Displacement	5		Avg. Job	5	
Cement Left In Pipe	Amount	45.20 ft	Reason	Shoe Joint							
Frac Ring # 1 @	ID		Frac ring # 2 @	ID		Frac Ring # 3 @	ID		Frac Ring # 4 @	ID	
The Information Stated Herein Is Correct					Customer Representative Signature						

The Road to Excellence Starts with Safety

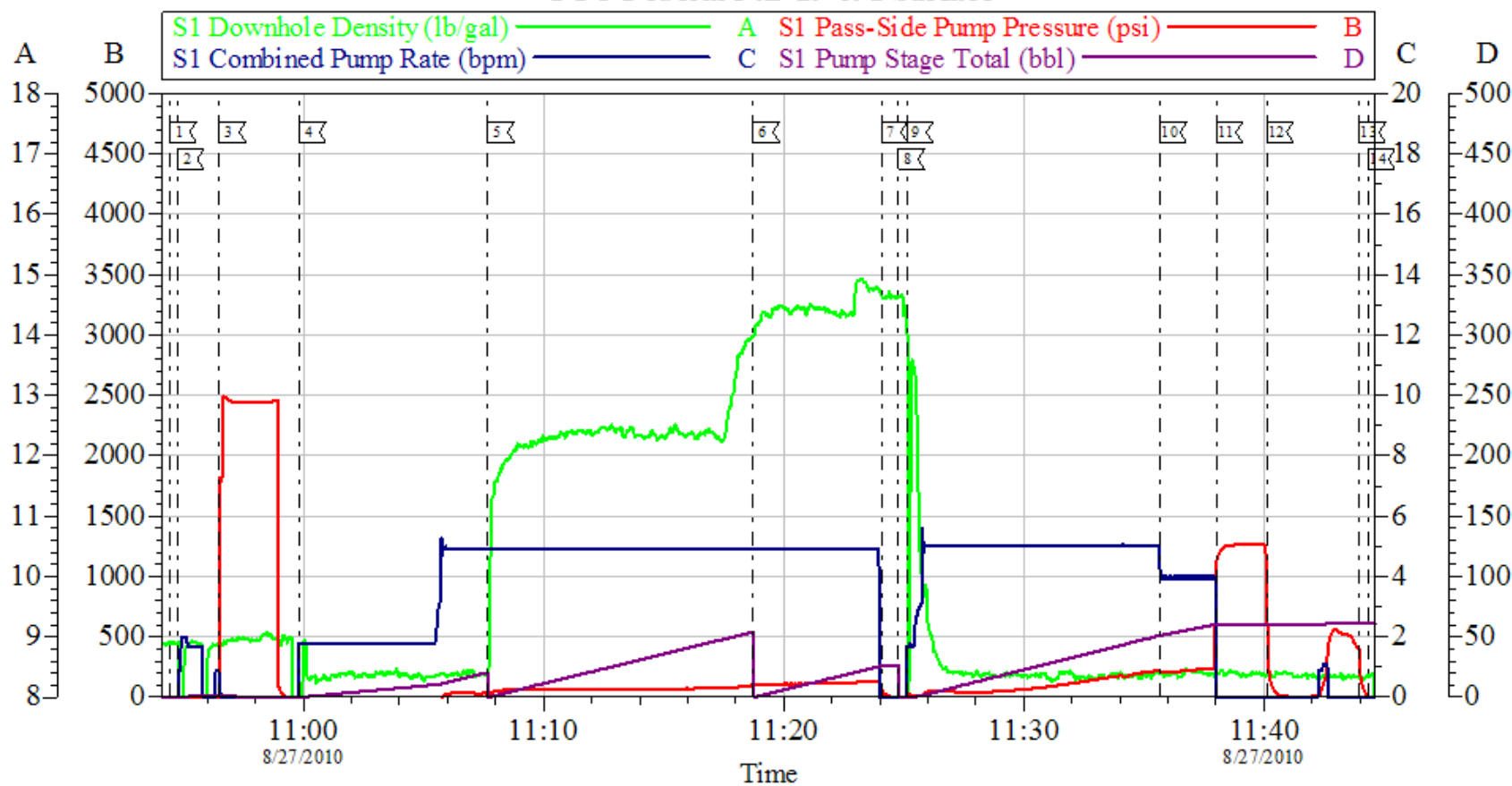
Sold To #: 343492	Ship To #: 2802127	Quote #:	Sales Order #: 7579379
Customer: BILL BARRETT CORPORATION E-BILL		Customer Rep: South, Jodi	
Well Name: GGU FEDERAL		Well #: 34B-29-691	API/UWI #: 05-045-19627
Field: MAMM CREEK	City (SAP): RIFLE	County/Parish: Garfield	State: Colorado
Legal Description:			
Lat: N 39.497 deg. OR N 39 deg. 29 min. 47.918 secs.		Long: W 107.576 deg. OR W -108 deg. 25 min. 27.03 secs.	
Contractor: BARRETT		Rig/Platform Name/Num: PETRO PLUS	
Job Purpose: Cement Surface Casing			Ticket Amount:
Well Type: Development Well		Job Type: Cement Surface Casing	
Sales Person: METLI, MARSHALL		Srvc Supervisor: CALDWELL, JEFFREY	MBU ID Emp #: 369111

Activity Description	Date/Time	Cht #	Rate bbl/min	Volume bbl		Pressure psig		Comments
				Stage	Total	Tubing	Casing	
Call Out	08/27/2010 04:00							ELITE#1
Arrive At Loc	08/27/2010 08:00							CREW STAYED OVER FROM PREVIOUS JOB.
Safety Meeting	08/27/2010 09:25							ALL PERSONNEL ASSOCIATED WITH JOB ATTENDED.
Rig-Up Equipment	08/27/2010 09:30							
Pre-Job Safety Meeting	08/27/2010 09:45							ALL PERSONNEL ASSOCIATED WITH JOB ATTENDED.
Start Job	08/27/2010 10:54							TD:810', TP:789.45', SJ:45.20', 12 1/4" OH.
Prime Pumps	08/27/2010 10:54		1.5	1.5			7.0	
Test Lines	08/27/2010 10:56					2500.0		TEST GOOD
Pump Spacer	08/27/2010 10:59		5	20			40.0	H2O
Pump Lead Cement	08/27/2010 11:07		5	50.9			97.0	120 SKS 12.3 PPG 2.38 CUFT/SAK 13.77 GAL/SAK
Pump Tail Cement	08/27/2010 11:18		5	30.6			133.0	120 SKS 14.2 PPG 1.43 CUFT/SAK 6.85GAL/SAK
Shutdown	08/27/2010 11:24							
Drop Top Plug	08/27/2010 11:24							PLUG AWAY
Pump Displacement	08/27/2010 11:25		5	57.5			220.0	H2O
Slow Rate	08/27/2010 11:35		4	48			215.0	
Bump Plug	08/27/2010 11:38		4	57.5			1235.0	PLUG BUMPED

Activity Description	Date/Time	Cht #	Rate bbl/ min	Volume bbl		Pressure psig		Comments
				Stage	Total	Tubing	Casing	
Check Floats	08/27/2010 11:40							GOT RETURNS @ 7 GONE ON DISPLACEMENT.FLOA TS DIDNT HOLD SHUT IN 300 PSI ON WELL.
End Job	08/27/2010 11:44							
Post-Job Safety Meeting (Pre Rig-Down)	08/27/2010 11:47							ALL PERSONNEL ASSOCIATED WITH JOB ATTENDED.
Rig-Down Equipment	08/27/2010 11:50							
Crew Leave Location	08/27/2010 13:00							THANK YOU FOR CHOOSING HALLIBURTON, JEFF CALDWELL AND CREW.

BILL BARRETT

GGU Federal 34B-29-691 Surface



Local Event Log			
1 Start Job	10:54:27	2 Prime Lines	10:54:46
3 Test Lines	10:56:30	4 Pump H2O Spacer	10:59:50
5 Pump Lead Cement	11:07:41	6 Pump Tail Cement	11:18:44
7 Shut Down	11:24:04	8 Drop Top Plug	11:24:46
9 Pump Displacement	11:25:07	10 Slow Rate	11:35:41
11 Bump Plug	11:38:01	12 Check Floats/Floats Didn't Hold	11:40:07
13 Shut In PSI On Well	11:43:59	14 End Job	11:44:22

Customer: Bill Barrett
 Well Description: GGU Federal 34B-29-691
 Company Rep: Jody South

Job Date: 27-Aug-2010
 Job Type: Surface
 Cement Supervisor: Jeff Caldwell

Sales Order #: 7579379
 ADC Used: Yes
 Elite #: 1/Tracy Gamble

OptiCem v6.4.2
 27-Aug-10 11:49