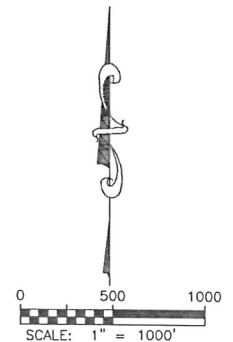
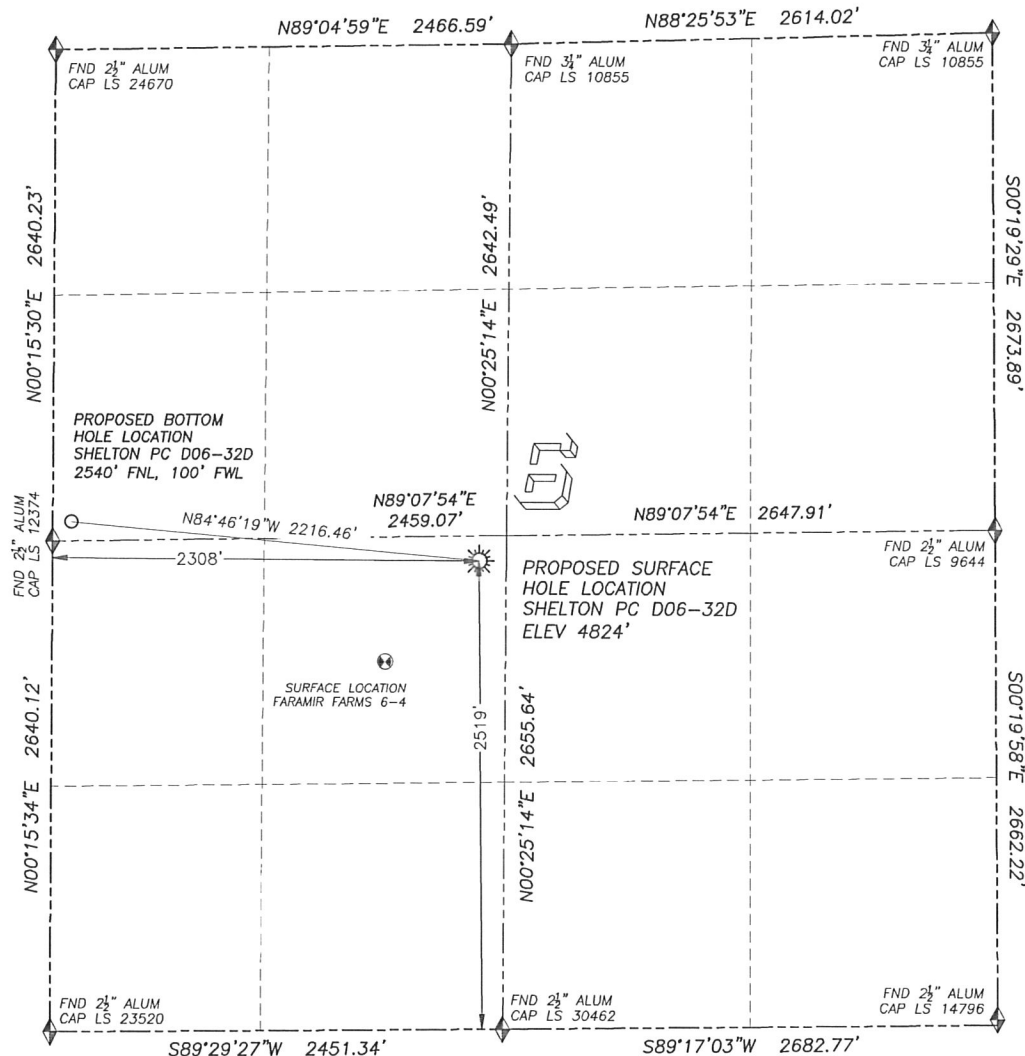


WELL LOCATION CERTIFICATE

SHELTON PC D06-32D

SECTION 6, TOWNSHIP 3 NORTH, RANGE 64 WEST OF THE 6TH PRINCIPAL MERIDIAN

**LEGEND**

- ◆ FOUND MONUMENT AS DESCRIBED
- ☀ PROPOSED WELL
- ⊙ EXISTING WELL
- BOTTOM HOLE
- ⊗ ABANDONED WELL

NAD 83 LATITUDE AND LONGITUDE**SHELTON PC D06-32D SURFACE HOLE:**

LATITUDE: N40.25396°
LONGITUDE: W104.59421°
ELEVATION: 4824'
PDOP 1.4

2519' FSL, 2308' FWL

BOTTOM HOLE:

LATITUDE: N40.25452°
LONGITUDE: W104.60212°
2540' FNL, 100' FWL

NEAREST EXISTING WELL:

FARAMIR FARMS 6-4 SURFACE HOLE
LATITUDE: N40.25247°
LONGITUDE: W104.59603°
ELEVATION: 4822'
744' SOUTHWEST

QUARTER/QUARTER: NE4/SW4

NEAREST APPARENT PROPERTY LINE:
150'± EAST

IN ACCORDANCE WITH A REQUEST FROM BEAU FRITZ OF NOBLE ENERGY INC., DALEY LAND SURVEYING, INC. HAS DETERMINED THE SURFACE LOCATION OF THE SHELTON PC D06-32D WELL TO BE 2519' FSL, 2308' FWL, AS MEASURED AT NINETY (90) DEGREES FROM THE SECTION LINES OF SECTION 6, TOWNSHIP 3 NORTH, RANGE 64 WEST OF THE 6TH PRINCIPAL MERIDIAN, WELD COUNTY, COLORADO. THE BOTTOM HOLE LOCATION, PROVIDED BY THE CLIENT, IS TO BE 2540' FNL, 100' FWL.

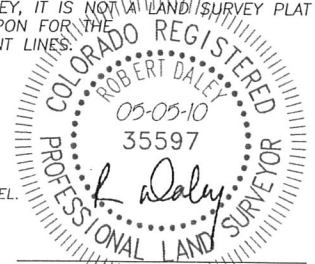
I HEREBY CERTIFY THAT THIS WELL LOCATION CERTIFICATE WAS PREPARED BY ME OR UNDER MY DIRECT SUPERVISION, THAT THE WORK WAS COMPLETED ON 4/29/2010 FOR AND ON BEHALF OF NOBLE ENERGY, INC., AND THAT THIS MAP DOES NOT REPRESENT A BOUNDARY SURVEY, IT IS NOT A LAND SURVEY PLAT OR AN IMPROVEMENT SURVEY PLAT AND IT IS NOT TO BE RELIED UPON FOR THE ESTABLISHMENT OF FENCE, BUILDING OR OTHER FUTURE IMPROVEMENT LINES.

NOTES:

- 1) BEARINGS FOR THIS MAP ARE ASSUMED AND BASED UPON GPS OBSERVATIONS MADE BETWEEN MONUMENTS LOCATED AT THE SOUTHWEST CORNER AND WEST QUARTER CORNER OF SECTION 6, T.3N., R.64W.
- 2) HORIZONTAL DATUM IS NAD83.
- 3) VERTICAL DATUM IS NAVD88. ELEVATIONS ARE DERIVED FROM GPS OBSERVATIONS PROCESSED THROUGH OPUS, UTILIZING THE GEOID03 MODEL.
- 4) SEE VISIBLE IMPROVEMENTS EXHIBIT FOR VISIBLE IMPROVEMENTS WITHIN 600' OF PROPOSED SURFACE HOLE LOCATION.
- 5) SURFACE USE: PASTURE.

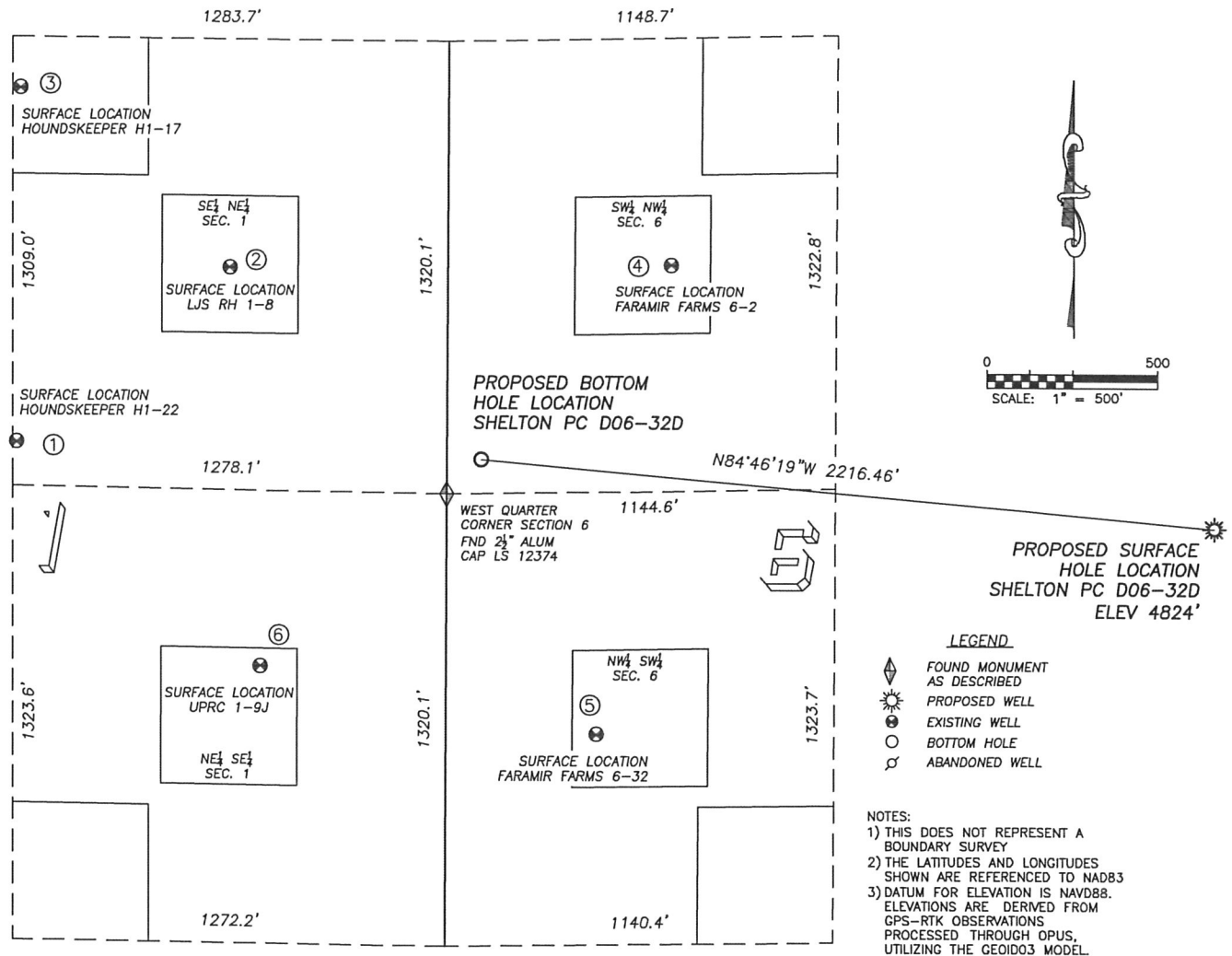
NOTICE: According to Colorado law you MUST commence any legal action based upon any defect in this W.L.C. within three years after you first discover such defect. In no event may any action based upon any such defect in this W.L.C. be commenced more than ten years from the date of the certification shown herein.

FOR AND ON BEHALF OF
DALEY LAND SURVEYING INC.,
Robert Daley, PLS 35597



SITE SKETCH SHELTON PC D06-32D

SECTION 6, TOWNSHIP 3 NORTH, RANGE 64 WEST OF THE 6TH PRINCIPAL MERIDIAN



①

HOUNDSKEEPER H1-22

SE/NE SEC. 1
2490' FNL, 1267' FEL
1417' W OF PROPOSED
BOTTOM HOLE LOCATION
LAT. N40.25465'
LONG. W104.60701'
EL: 4871'
PDOP 1.7

②

LJS RH 1-8

SE/NE SEC. 1
1981' FNL, 642' FEL
939' NW OF PROPOSED
BOTTOM HOLE LOCATION
LAT. N40.25605'
LONG. W104.60477'
EL: 4858'
PDOP 1.7

③

HOUNDSKEEPER H1-17

SE/NE SEC. 1
1457' FNL, 1259' FEL
1743' NW OF PROPOSED
BOTTOM HOLE LOCATION
LAT. N40.25749'
LONG. W104.60697'
EL: 4866'
PDOP 1.7

④

FARAMIR FARMS 6-2

SW/NW SEC. 6
1981' FNL, 657' FWL
797' NE OF PROPOSED
BOTTOM HOLE LOCATION
LAT. N40.25607'
LONG. W104.60012'
EL: 4847'
PDOP 2.0

⑤

FARAMIR FARMS 6-32

NW/SW SEC. 6
1935' FSL, 441' FWL
900' SE OF PROPOSED
BOTTOM HOLE LOCATION
LAT. N40.25232'
LONG. W104.60091'
EL: 4834'
PDOP 1.9

⑥

UPRC 1-9J

NE/SE SEC. 1
2131' FSL, 547' FEL
960' SW OF PROPOSED
BOTTOM HOLE LOCATION
LAT. N40.25286'
LONG. W104.60445'
EL: 4856'
PDOP 1.7

PAD DETAIL

