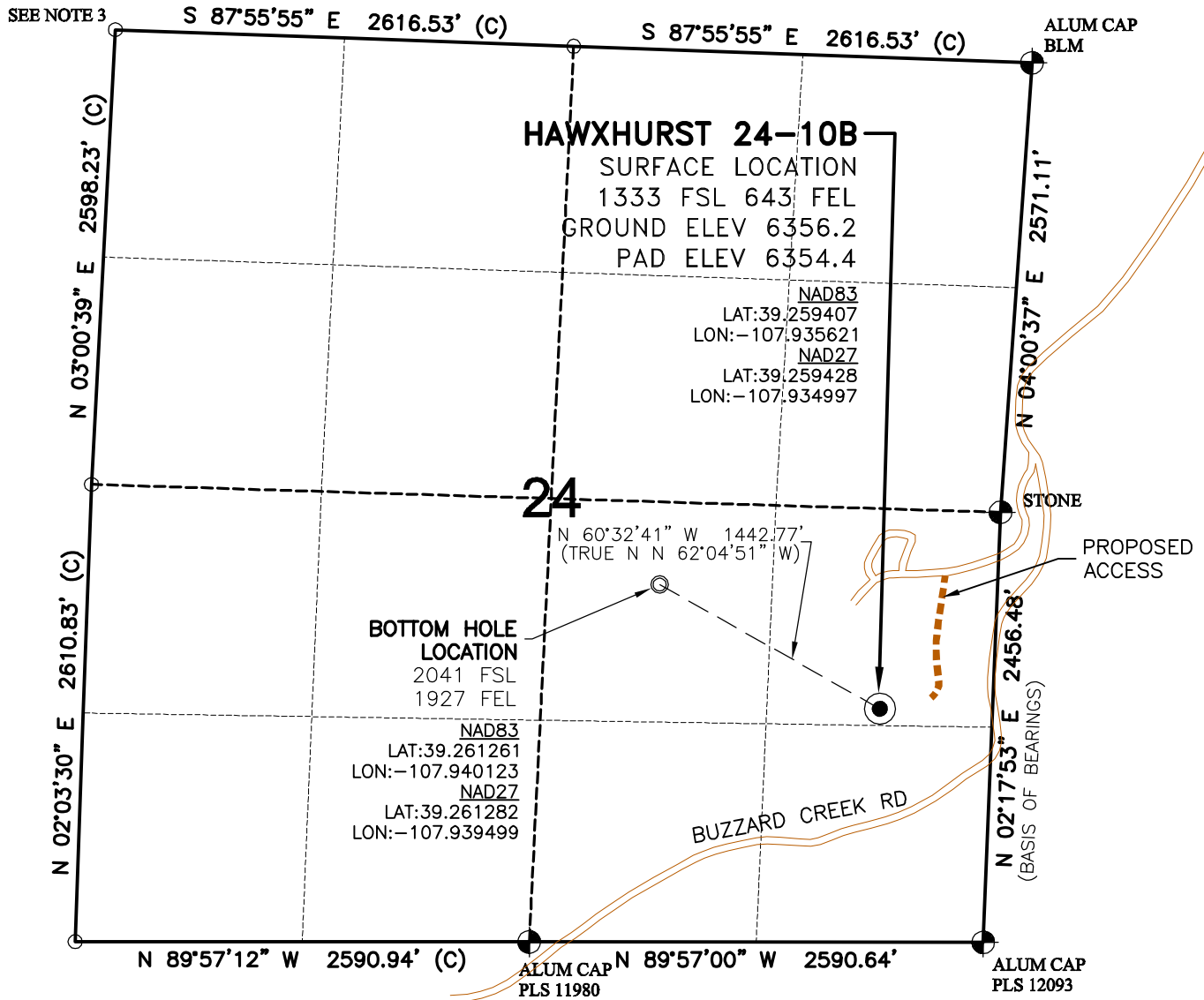


WELL LOCATION MAP

HAWXHURST 24-09 PAD



SURVEYOR'S STATEMENT

The undersigned hereby states that the well location shown hereon was staked on the ground based on existing monumentation and/or physical evidence found in the field and is correct to the best of my knowledge, information and belief.

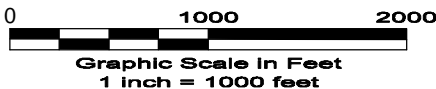


NOTES

- 1.) Horizontal and vertical datum based on Mesa County control point "SN23" with an elevation of 8008.15. NAVD 1988.
- 2.) All directions, distances, and dimensions shown hereon are based on coordinates from the "Colorado coordinate system of 1983 central zone" (article 52 of title 38, C.R.S.).
- 3.) All section line dimensions shown hereon are based on field measurements of existing monuments and/or physical evidence found in the field unless otherwise indicated. Refer to land survey plats deposited in Mesa County & BLM Survey.
- 4.) Physical features shown hereon are for graphical representation only.
- 5.) See Form 2A for visible improvements within 400' of wellhead.
- 6.) Distances to nearest section lines are measured perpendicularly.
- 7.) This is not a land survey nor land survey plat.
- 8.) Date of Survey 6/18/10; Date of Drawing 7/21/10. REV 0

PDOP Reading: 3.8 Instrument Operator: DJM

7/21/10



LAND SURVEYING AND MAPPING

LAFAYETTE - WINTER PARK

Ph 303 666 0379 Fx 303 665 6320

LARAMIE ENERGY II LLC
HAWXHURST 24-10B

SL NE1/4 SE1/4 SEC. 24 T9S R95W
BL NW1/4 SE1/4 SEC. 24 T9S R95W
6th PM MESA COUNTY COLORADO