

BILL BARRETT CORPORATION E-BILL  
DO NOT MAIL-1099 18TH ST,STE 2300W  
DENVER, Colorado

Dommer 33B-26-692

BARRETT/PETRO PLUS

## Post Job Report Cement Surface Casing

Prepared for: Jodi South  
Date Prepared: 7/16/09  
Version: 1

Service Supervisor: JAMISON, PRICE

Submitted by:

HALLIBURTON

### The Road to Excellence Starts with Safety

The Road to Excellence Starts with Safety

<b>Sold To #:</b> 343492	<b>Ship To #:</b> 2735193	<b>Quote #:</b>	<b>Sales Order #:</b> 6774391
<b>Customer:</b> BILL BARRETT CORPORATION E-BILL		<b>Customer Rep:</b> South, Jodi	
<b>Well Name:</b> Dommer		<b>Well #:</b> 33B-26-692	<b>API/UWI #:</b>
<b>Field:</b> PICEANCE	<b>City (SAP):</b> SILT	<b>County/Parish:</b> Garfield	<b>State:</b> Colorado
<b>Contractor:</b> BARRETT		<b>Rig/Platform Name/Num:</b> PETRO PLUS	
<b>Job Purpose:</b> Cement Surface Casing			
<b>Well Type:</b> Development Well		<b>Job Type:</b> Cement Surface Casing	
<b>Sales Person:</b> METLI, MARSHALL		<b>Srvc Supervisor:</b> JAMISON, PRICE	<b>MBU ID Emp #:</b> 229155

### Job Personnel

HES Emp Name	Exp Hrs	Emp #	HES Emp Name	Exp Hrs	Emp #	HES Emp Name	Exp Hrs	Emp #
CHASTAIN, DERICK Allan	3.0	455848	CRONKHITE, KENT Alan	3.0	336769	JAMISON, PRICE W	3.0	229155
MUHLESTEIN, RYAN	3.0	453609	SMITH, DUSTIN Michael	3.0	418015			

### Equipment

HES Unit #	Distance-1 way	HES Unit #	Distance-1 way	HES Unit #	Distance-1 way	HES Unit #	Distance-1 way
10616651C	120 mile	10783493	120 mile	10822007	120 mile	10829466	120 mile
10951246	120 mile	10995025	120 mile				

### Job Hours

Date	On Location Hours	Operating Hours	Date	On Location Hours	Operating Hours	Date	On Location Hours	Operating Hours
7/16/09	3	0:40						

**TOTAL** Total is the sum of each column separately

### Job

Formation Name	Formation Depth (MD)	Top	Bottom	Form Type	Job depth MD	Water Depth	Perforation Depth (MD)	From	To
				BHST	773.4 ft				

### Job Times

Called Out	Date	Time	Time Zone
16 - Jul - 2009	09:00	MST	
16 - Jul - 2009	12:00	MST	
16 - Jul - 2009	13:06	MST	
16 - Jul - 2009	13:45	MST	
16 - Jul - 2009	15:00	MST	

### Well Data

Description	New / Used	Max pressure psig	Size in	ID in	Weight lbm/ft	Thread	Grade	Top MD ft	Bottom MD ft	Top TVD ft	Bottom TVD ft
12 3/8 Open Hole Section				12.3/8				0.0	790.	0.0	790.
9 5/8 Surface Casing	NEW	1616	9.625	8.921	36.	8 RD	J-55	0.0	773.4	0.0	773.4

### Sales/Rental/3<sup>rd</sup> Party (HES)

Description	Qty	Qty uom	Depth	Supplier
PLUG,CMTG,TOP,9 5/8,HWE,8.16 MIN/9.06 MA	1	EA		
CENTRALIZER-9-5/8"-CSG-12 1/4"-HINGED	5	EA		
CLR,FLT,9-5/8 8RD 29.3-40PPF,2-3/4	1	EA		
SHOE,GID,9-5/8 8RD	1	EA		
COLLAR-STOP-9 5/8"-FRICTION-HINGED	1	EA		
KIT,HALL WELD-A	2	EA		
PORT. DAS W/CEMWIN;ACQUIRE W/HES, ZI	1	JOB		
ADC (AUTO DENSITY CTRL) SYS, /JOB,ZI	1	JOB		

Tools and Accessories													
Type	Size	Qty	Make	Depth	Type	Size	Qty	Make	Depth	Type	Size	Qty	Make
Guide Shoe					Packer					Top Plug			
Float Shoe					Bridge Plug					Bottom Plug			
Float Collar					Retainer					SSR plug set			
Insert Float										Plug Container			
Stage Tool										Centralizers			
Miscellaneous Materials													
Gelling Agt			Conc		Surfactant			Conc		Acid Type		Qty	Conc %
Treatment Fld			Conc		Inhibitor			Conc		Sand Type		Size	Qty
Fluid Data													
Stage/Plug #: 1													
Fluid #	Stage Type	Fluid Name			Qty	Qty uom	Mixing Density lbm/gal	Yield ft3/sk	Mix Fluid Gal/sk	Rate bbl/min	Total Mix Fluid Gal/sk		
1	WATER SPACER				40	bbl	8.33			6.0			
2	LEAD CEMENT	VERSACEM (TM) SYSTEM (452010)			120.0	sacks	12.3	2.37	13.76	6.0			
	13.418 Gal	FRESH WATER											
3	TAIL CEMENT	SWIFTCES (TM) SYSTEM (452990)			120.0	sacks	14.2	1.43	6.88	6.0			
	6.715 Gal	FRESH WATER											
4	DISPLACEMENT				56.4	bbl	8.33			6.0			
Calculated Values		Pressures			Volumes								
Displacement	56.4	Shut In: Instant			Lost Returns	NO	Cement Slurry	81.3	Pad				
Top Of Cement	SURFACE	5 Min			Cement Returns	20	Actual Displacement	56	Treatment				
Frac Gradient		15 Min			Spacers	40	Load and Breakdown		Total Job	178			
Rates													
Circulating	NO	Mixing			6	Displacement	6	Avg. Job			6		
Cement Left In Pipe	Amount	44.15 ft	Reason	Shoe Joint									
Frac Ring # 1 @	ID	Frac ring # 2 @	ID	Frac Ring # 3 @	ID	Frac Ring # 4 @	ID						
The Information Stated Herein Is Correct					Customer Representative Signature								

*The Road to Excellence Starts with Safety*

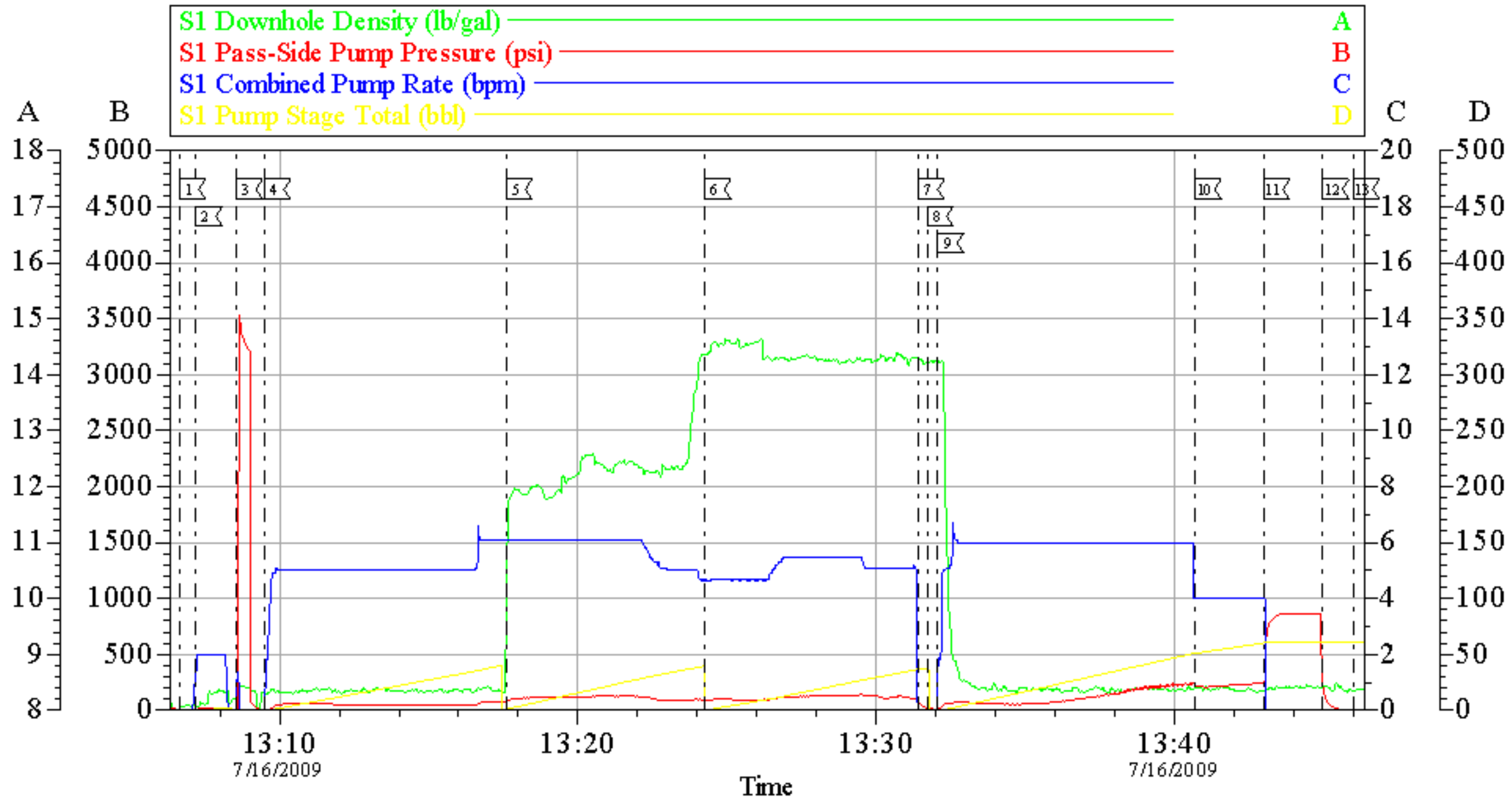
Sold To #: 343492		Ship To #: 2735193		Quote #:		Sales Order #: 6774391	
Customer: BILL BARRETT CORPORATION E-BILL				Customer Rep: South, Jodi			
Well Name: Dommer			Well #: 33B-26-692			API/UWI #:	
Field: PICEANCE		City (SAP): SILT		County/Parish: Garfield			State: Colorado
Legal Description:							
Lat: N 0 deg. OR N 0 deg. 0 min. 0 secs.				Long: E 0 deg. OR E 0 deg. 0 min. 0 secs.			
Contractor: BARRETT			Rig/Platform Name/Num: PETRO PLUS				
Job Purpose: Cement Surface Casing						Ticket Amount:	
Well Type: Development Well			Job Type: Cement Surface Casing				
Sales Person: METLI, MARSHALL			Srvc Supervisor: JAMISON, PRICE			MBU ID Emp #: 229155	

Activity Description	Date/Time	Cht #	Rate bbl/min	Volume bbl		Pressure psig		Comments
				Stage	Total	Tubing	Casing	
Call Out	07/16/2009 09:00							
Depart Yard Safety Meeting	07/16/2009 09:50							
Crew Leave Yard	07/16/2009 10:00							
Arrive At Loc	07/16/2009 12:00							
Assessment Of Location Safety Meeting	07/16/2009 12:10							
Pre-Rig Up Safety Meeting	07/16/2009 12:15							
Safety Meeting	07/16/2009 12:50							TD 790 TP 773.35 SHOE JOINT 44.15 CASING 9 5/8 36 # J-55 NO MUD WELL WAS DRILLED WITH AIR.
Start Job	07/16/2009 13:06							
Prime Pumps	07/16/2009 13:07		2	2			.0	FRESH WATER
Test Lines	07/16/2009 13:08						3500.0	
Pump Spacer 1	07/16/2009 13:09		6	40			78.0	FRESH WATER
Pump Lead Cement	07/16/2009 13:17		6	50.7			130.0	MIXED @ 12.3 PPG YIELD 2.38 WAT/REQ 13.76 120 SKS
Pump Tail Cement	07/16/2009 13:24		6	30.6			150.0	MIXED@ 14.2 PPG YIELD 1.43 WAT/REQ 6.88 120 SKS
Shutdown	07/16/2009 13:31							
Drop Plug	07/16/2009 13:31							

Activity Description	Date/Time	Cht #	Rate bbl/min	Volume bbl		Pressure psig		Comments
				Stage	Total	Tubing	Casing	
Pump Displacement	07/16/2009 13:32		6					FRESH WATER
Slow Rate	07/16/2009 13:40		4	46			255.0	
Bump Plug	07/16/2009 13:42		4	56			245.0	PRESSURED UP TO 800 PSI
Check Floats	07/16/2009 13:44							FLOATS HELD
End Job	07/16/2009 13:45							GOT RETURNS 7 BBLS IN TO TAIL CEMENT
Post-Job Safety Meeting (Pre Rig-Down)	07/16/2009 13:50							GOOD RETURNS TILL END OF JOB
Depart Location Safety Meeting	07/16/2009 14:45							CEMENT BACK TO SURFACE 20 BBLS
Crew Leave Location	07/16/2009 15:00							THANKS FOR USING HALLIBURTON BILL JAMISON AND CREW

# BILL BARRETT

## 9 5/8 SURFACE CASING



Customer: BILL BARRETT  
Well Description: DOMMER 33B-26-692  
Company Rep: JODI SOUTH

Job Date: 16-Jul-2009  
Job Type: SURFACE CASING  
Cement Supervisor: BILL JAMISON

Sales Order #: 6774391  
ADC Used: YES  
Elite #: 4 RYAN MUHLESTEIN

**HALLIBURTON**  
OptiCem v6.3.4  
16-Jul-09 13:53