

BILL BARRETT CORPORATION E-BILL
DO NOT MAIL-1099 18TH ST,STE 2300W
DENVER, Colorado

Dommer 33D-26-692

BARRETT/PETRO PLUS

Post Job Report Cement Surface Casing

Prepared for:
Date Prepared:
Version: 1

Service Supervisor: MILLER, KEVIN

Submitted by:

HALLIBURTON

The Road to Excellence Starts with Safety

Sold To #: 343492	Ship To #: 2735577	Quote #:	Sales Order #: 6773673
Customer: BILL BARRETT CORPORATION E-BILL	Customer Rep:		
Well Name: Dommer	Well #: 33D-26-692	API/UWI #:	
Field: PICEANCE	City (SAP): SILT	County/Parish: Garfield	State: Colorado
Contractor: BARRETT	Rig/Platform Name/Num: PETRO PLUS		
Job Purpose: Cement Surface Casing			
Well Type: Development Well	Job Type: Cement Surface Casing		
Sales Person: METLI, MARSHALL	Srv Supervisor: MILLER, KEVIN	MBU ID Emp #:	443040

Job Personnel

HES Emp Name	Exp Hrs	Emp #	HES Emp Name	Exp Hrs	Emp #	HES Emp Name	Exp Hrs	Emp #
BRUN, JUSTIN		459269	MAIN, CHAD R		335770	MILLER, KEVIN Paul		443040
PHILLIPS, MARK Bejar		445272						

Equipment

HES Unit #	Distance-1 way	HES Unit #	Distance-1 way	HES Unit #	Distance-1 way	HES Unit #	Distance-1 way
10722398	120 mile	10822535	120 mile	10871245	120 mile	10951244	120 mile
11139330	120 mile						

Job Hours

Date	On Location Hours	Operating Hours	Date	On Location Hours	Operating Hours	Date	On Location Hours	Operating Hours

TOTAL		Total is the sum of each column separately
-------	--	--

Job

Job Times

Formation Name					Date	Time	Time Zone
Formation Depth (MD)	Top		Bottom		Called Out	18 - Jul - 2009	18:00 MST
Form Type		BHST			On Location	18 - Jul - 2009	18:00 MST
Job depth MD	807. ft	Job Depth TVD	807. ft		Job Started	18 - Jul - 2009	20:50 MST
Water Depth		Wk Ht Above Floor	3. ft		Job Completed	18 - Jul - 2009	21:34 MST
Perforation Depth (MD)	From		To		Departed Loc		

Well Data

Description	New / Used	Max pressure psig	Size in	ID in	Weight lbm/ft	Thread	Grade	Top MD ft	Bottom MD ft	Top TVD ft	Bottom TVD ft
-------------	------------	-------------------	---------	-------	---------------	--------	-------	-----------	--------------	------------	---------------

Sales/Rental/3rd Party (HES)

Description	Qty	Qty uom	Depth	Supplier
PLUG,CMTG,TOP,9 5/8,HWE,8.16 MIN/9.06 MA	1	EA		
PORT. DAS W/CEMWIN;ACQUIRE W/HES, ZI	1	JOB		
ADC (AUTO DENSITY CTRL) SYS, /JOB,ZI	1	JOB		

Tools and Accessories

Type	Size	Qty	Make	Depth	Type	Size	Qty	Make	Depth	Type	Size	Qty	Make
Guide Shoe					Packer					Top Plug			
Float Shoe					Bridge Plug					Bottom Plug			
Float Collar					Retainer					SSR plug set			
Insert Float										Plug Container			
Stage Tool										Centralizers			

Miscellaneous Materials

Gelling Agt	Conc	Surfactant	Conc	Acid Type	Qty	Conc	%
Treatment Fld	Conc	Inhibitor	Conc	Sand Type	Size	Qty	

Fluid Data										
Stage/Plug #: 1										
Fluid #	Stage Type	Fluid Name	Qty	Qty uom	Mixing Density lbm/gal	Yield ft ³ /sk	Mix Fluid Gal/sk	Rate bbl/min	Total Mix Fluid Gal/sk	
1	WATER SPACER		20.00	bbl	.	.0	.0	.0		
2	Lead Cement	VERSACEM (TM) SYSTEM (452010)	120.0	sacks	12.3	2.38	13.75			
		CAL-SEAL 60, 50 LB BAG (101217146)								
		ECONOLITE (100001580)								
		VERSASET, 55 LB SK (101376573)								
		SALT, 100 LB BAG (100003652)								
		POLY-E-FLAKE (101216940)								
		D-AIR 3000 (101007446)								
		FRESH WATER								
3	Tail Cement	SWIFTCEM (TM) SYSTEM (452990)	120.0	sacks	14.2	1.43	6.88			
4	DISPLACEMENT		64.00	bbl	.	.0	.0	.0		
Calculated Values		Pressures		Volumes						
Displacement		Shut In: Instant		Lost Returns		Cement Slurry		Pad		
Top Of Cement		5 Min		Cement Returns		Actual Displacement		Treatment		
Frac Gradient		15 Min		Spacers		Load and Breakdown		Total Job		
Rates										
Circulating		Mixing		Displacement		Avg. Job				
Cement Left In Pipe	Amount	0 ft	Reason	Shoe Joint						
Frac Ring # 1 @	ID	Frac ring # 2 @	ID	Frac Ring # 3 @	ID	Frac Ring # 4 @	ID			
The Information Stated Herein Is Correct				Customer Representative Signature						

The Road to Excellence Starts with Safety

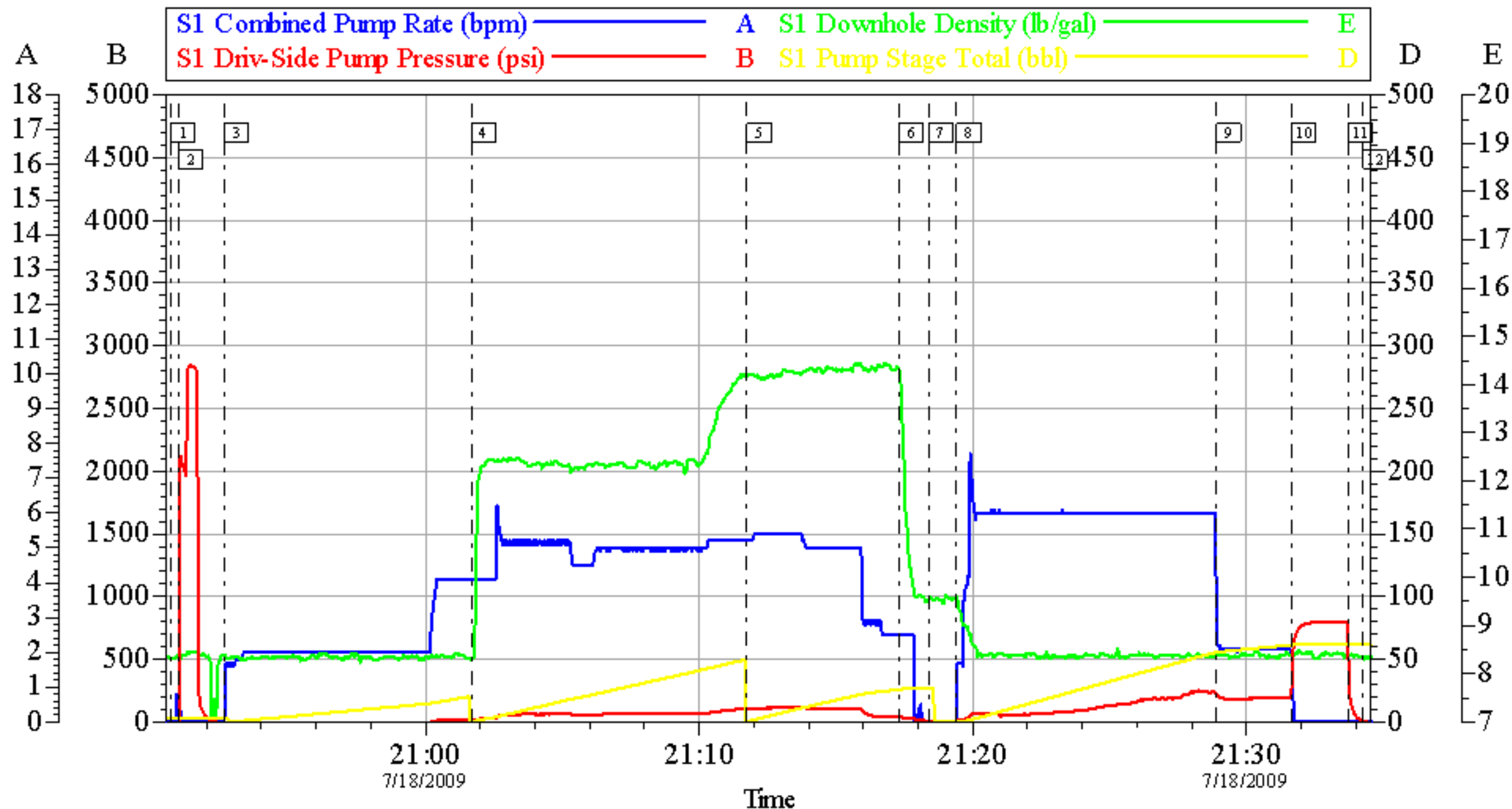
Sold To #: 343492		Ship To #: 2735577		Quote #:		Sales Order #: 6773673	
Customer: BILL BARRETT CORPORATION E-BILL				Customer Rep:			
Well Name: Dommer			Well #: 33D-26-692			API/UWI #:	
Field: PICEANCE		City (SAP): SILT		County/Parish: Garfield			State: Colorado
Legal Description:							
Lat: N 0 deg. OR N 0 deg. 0 min. 0 secs.				Long: E 0 deg. OR E 0 deg. 0 min. 0 secs.			
Contractor: BARRETT			Rig/Platform Name/Num: PETRO PLUS				
Job Purpose: Cement Surface Casing						Ticket Amount:	
Well Type: Development Well			Job Type: Cement Surface Casing				
Sales Person: METLI, MARSHALL			Srvc Supervisor: MILLER, KEVIN			MBU ID Emp #: 443040	

Activity Description	Date/Time	Cht #	Rate bbl/min	Volume bbl		Pressure psig		Comments
				Stage	Total	Tubing	Casing	
Arrive At Loc	07/18/2009 18:00							TD-879, TP-861.09, SJ, 43.18, CSG-9.625 36#, HOLE- 12 3/8, NO MUD- AIR DRILLED RIG
Assessment Of Location Safety Meeting	07/18/2009 18:10							ALL HES PERSONEL
Pre-Rig Up Safety Meeting	07/18/2009 18:25							ALL HES PERSONEL
Rig-Up Equipment	07/18/2009 18:30							
Rig-Up Completed	07/18/2009 18:50							
Pre-Job Safety Meeting	07/18/2009 19:00							ALL HES PERSONEL AND RIG CREW
Start Job	07/18/2009 20:50							
Pressure Test	07/18/2009 20:51						3000.0	
Pump Spacer 1	07/18/2009 20:52		2	20			20.0	PUMPED 20 BBL FRESH WATER
Pump Lead Cement	07/18/2009 21:01		5	50.9			112.0	120 SKS, 12.3#, 2.38 YEILD, 13.75 GAL/SK
Pump Tail Cement	07/18/2009 21:11		6	30.5			112.0	120 SKS, 14.2#, 1.43 YEILD, 6.88 GAL/SK
Shutdown	07/18/2009 21:17							
Drop Top Plug	07/18/2009 21:18							PLUG WENT
Pump Displacement	07/18/2009 21:19		6	63.2			222.0	GOT RETURNS AT 19 BBLS INTO DISPLACEMENT, GOT CEMENT RETURNS 40 BBLS INTO DISPLACEMENT, 23 BBLS TO PIT

Activity Description	Date/Time	Cht #	Rate bbl/min	Volume bbl		Pressure psig		Comments
				Stage	Total	Tubing	Casing	
Bump Plug	07/18/2009 21:31		2	63.2			804.0	
Check Floats	07/18/2009 21:33							FLOATS HELD
End Job	07/18/2009 21:34							
Pre-Rig Down Safety Meeting	07/18/2009 21:45							ALL HES PERSONEL
Rig-Down Equipment	07/18/2009 22:00							
Rig-Down Completed	07/18/2009 22:20							
Depart Location for Service Center or Other Site	07/18/2009 22:21							ALL HES PERSONEL IS STAYING ON LOCATION FOR NEXT SURFACE JOB
Other	07/18/2009 22:22							THANK YOU FOR USING HALLIBURTON GRAND JUNCTION KEVIN MILLER AND CREW

BILL BARRETT

9.625 SURFACE



Local Event Log					
1	STARTJOB	20:50:41	2	PRESSURE TEST	20:50:59
3	H2O SPACER	20:52:39	4	LEAD CEMENT	21:01:41
5	TAIL CEMENT	21:11:45	6	SHUTDOWN	21:17:18
7	DROP PLUG	21:18:23	8	PUMP DISPLACEMENT	21:19:24
9	SLOW RATE	21:28:54	10	BUMP PLUG	21:31:39
11	CHECK FLOATS	21:33:44	12	END JOB	21:34:15

Customer: BILL BARRETT
Well Description: DOMMER 33D-26-692
Company Rep: JODY SOUTH

Job Date: 18-Jul-2009
Job Type: SURFACE
Cement Supervisor: KEVIN MILLER

Sales Order #: 6773673
ADC Used: YES
Elite #: 8

OptiCem v6.4.2
18-Jul-09 21:38