

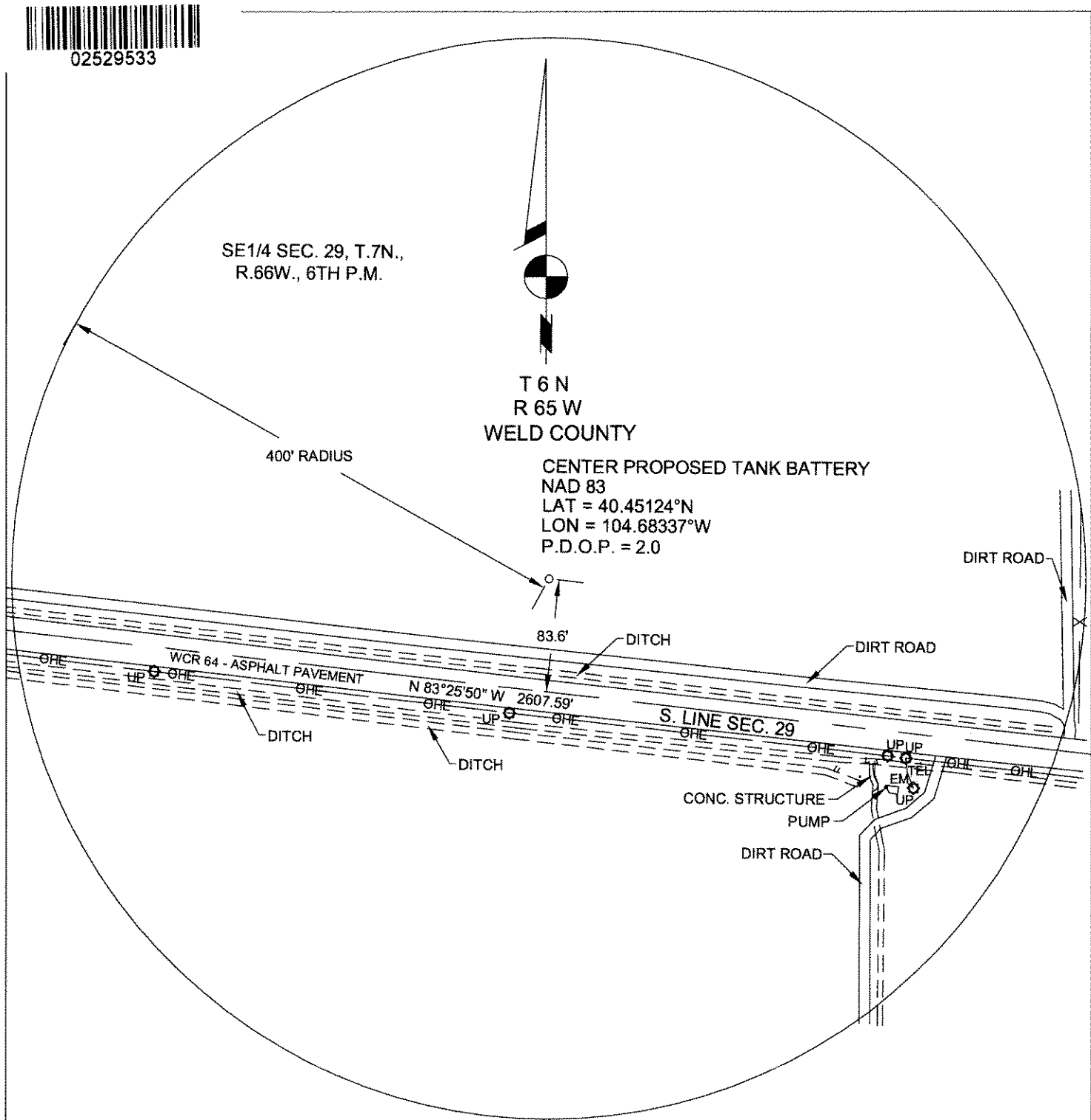


SE1/4 SEC. 29, T.7N.,
R.66W., 6TH P.M.

T 6 N
R 65 W
WELD COUNTY

CENTER PROPOSED TANK BATTERY
NAD 83
LAT = 40.45124°N
LON = 104.68337°W
P.D.O.P. = 2.0

400' RADIUS



LEGEND

- WMO = WATER METER
- UP = UTILITY POLE
- GMK = GAS MARKER
- ◆ = SECTION CORNER
- = FENCE LINE
- OHE— = OVERHEAD ELECTRIC LINE
- = SECTION LINE
- TEL = TELEPHONE PEDESTAL
- EM = ELECTRIC METER



SCALE 1"=100'

SHEET 2 OF 2

PREPARED FOR:
Matrix Energy, LLC
P.O.Box 271309
Fort Collins, CO 80527

400FT RADIUS MAP
SURFACE LOCATION: T6N, R65W, S29
SURFACE USE: DRYLAND CROP

501-10-169A



120 W. 84TH AVENUE
THORNTON, COLORADO 80260

PH 303-702-1617
FAX 303-702-1488
WWW.POWERSURVEYING.COM

TANK BATTERY FOR MORO FARMS
44-29 & CSE-29 & 34-29

FIELD DATE: 8-24-2010
DRAWING DATE: 8-30-2010
DRAFTER: RBG
CHECKED BY: DY