

WEXPRO COMPANY

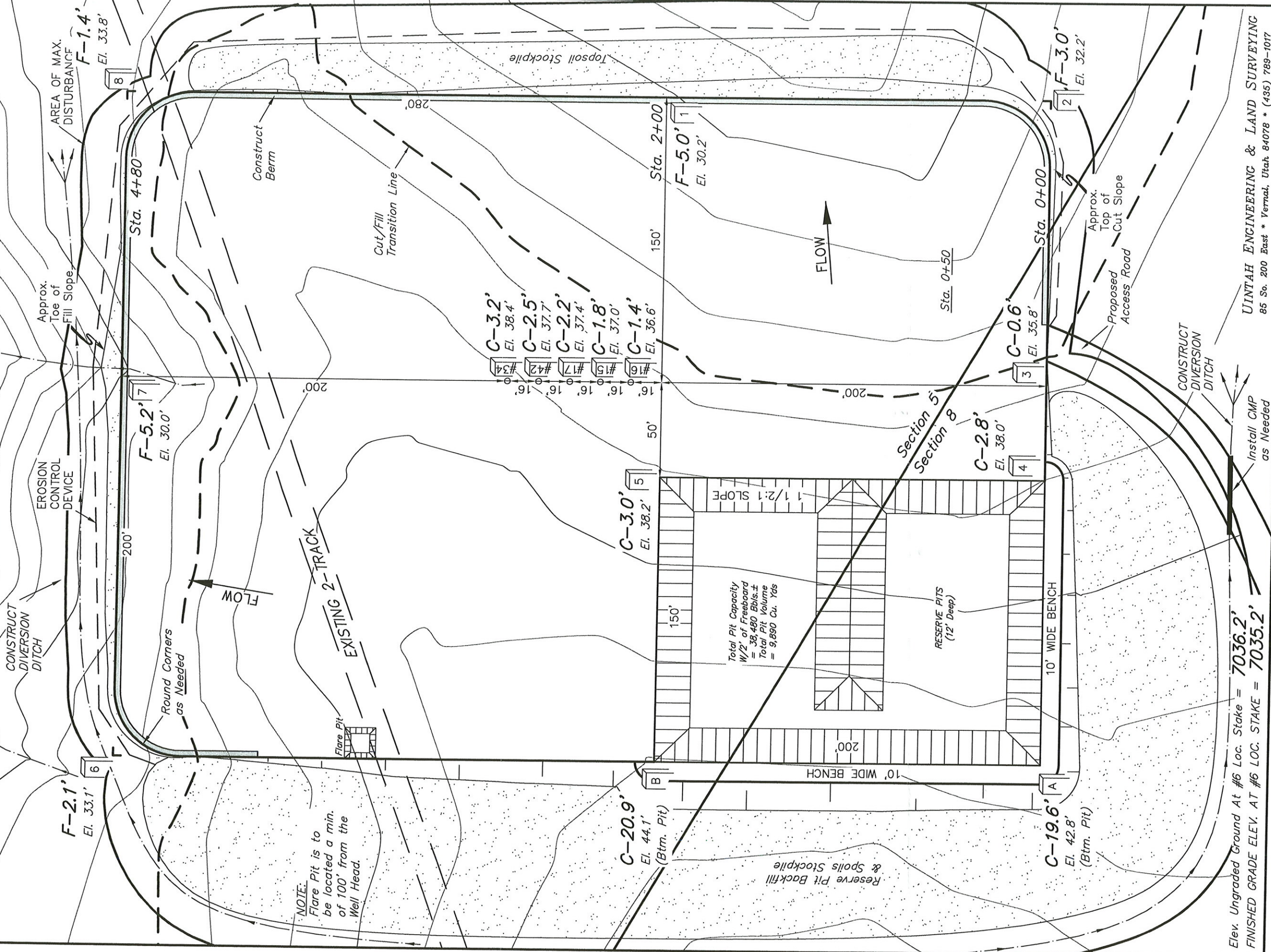
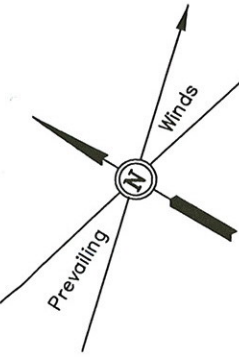
CONSTRUCTION LAYOUT FOR

POWDER WASH GOVERNMENT #15,
#16, #17 & MUSSER #34 & #42
SECTION 5, T11N, R97W, 6th P.M.

SE 1/4 SW 1/4

FIGURE #1

SCALE: 1" = 50'
DATE: 09-15-09
DRAWN BY: S.L.
REVISED: 11-19-09
REV: 12-11-09 K.G.
REV: 01-28-10 K.G.
REV: 08-03-10 K.G.
REV: 08-19-10 K.G.



Elev. Ungraded Ground At #6 Loc. Stake = 7036.2'
FINISHED GRADE ELEV. AT #6 LOC. STAKE = 7035.2'

UINTEAH ENGINEERING & LAND SURVEYING
85 So. 200 East * Vernal, Utah 84078 * (435) 789-1017