

LOCATION DRAWING

VEGETATION:
DRY LAND WHEAT

SURFACE USE:
AGRICULTURAL

GROUND SLOPE <10%

BOB WHITE 36-44-8-62

LATITUDE: 40.612183

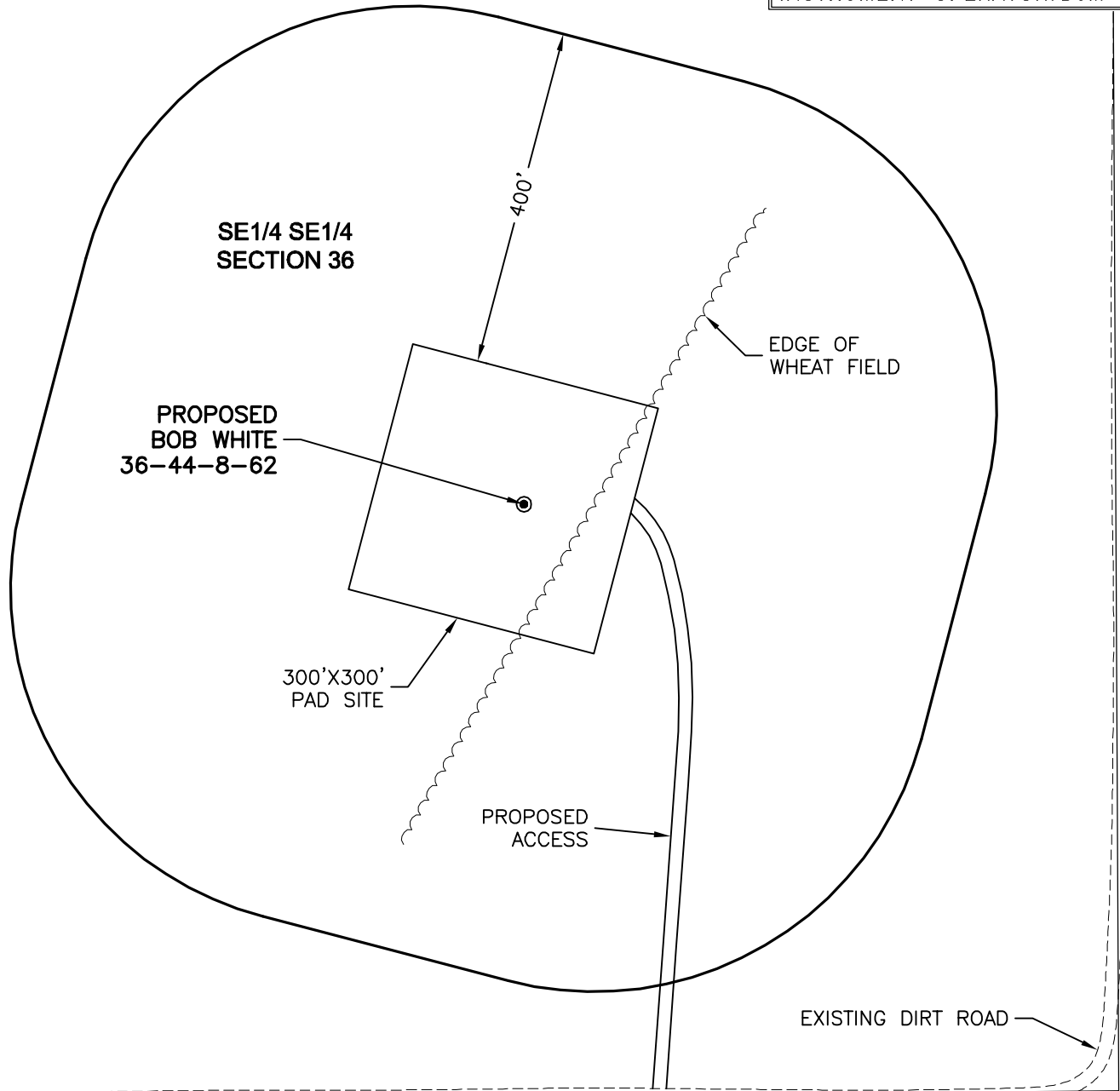
LONGITUDE: -104.261462

FOOTAGE: 700 FSL 700 FEL

GROUND ELEVATION: 4930.1

PDOP: 3.2 DATE: 7/14/2010

INSTRUMENT OPERATOR: DJM



North

0 200 400

Graphic Scale in Feet
1 inch = 200 feet

DISTURBANCE ACREAGE:
3.5± DRILLING OPERATIONS
1.5± INTERIM RECLAIM

7/19/10



LAND SURVEYING AND MAPPING
LAFAYETTE - WINTER PARK
Ph 303 666 0379 Fx 303 665 6320

CARRIZO OIL & GAS, INC
BOB WHITE 36-44-8-62

SE1/4 SE1/4 SEC. 36 T8N R62W
6th PM WELD COUNTY COLORADO