

BILL BARRETT CORPORATION E-BILL
DO NOT MAIL-1099 18TH ST,STE 2300W
DENVER, Colorado

GGU FED
GGU FED 43B-29-691

BARRETT/PETRO PLUS

Post Job Summary

Cement Surface Casing

Prepared for: JODI SOUTH
Date Prepared: AUG 29,2010
Version: 1

Service Supervisor: ARNOLD, EDWARD

Submitted by:

HALLIBURTON

The Road to Excellence Starts with Safety

Sold To #: 343492	Ship To #: 2802174	Quote #:	Sales Order #: 7579387
Customer: BILL BARRETT CORPORATION E-BILL	Customer Rep: South, Jodi		
Well Name: GGU FED	Well #: 43B-29-691	API/UWI #:	
Field: PICEANCE	City (SAP):	County/Parish: Garfield	State: Colorado
Contractor: BARRETT	Rig/Platform Name/Num: PETRO PLUS		
Job Purpose: Cement Surface Casing			
Well Type: Development Well	Job Type: Cement Surface Casing		
Sales Person: METLI, MARSHALL	Srv Supervisor: ARNOLD, EDWARD	MBU ID Emp #:	439784

Job Personnel

HES Emp Name	Exp Hrs	Emp #	HES Emp Name	Exp Hrs	Emp #	HES Emp Name	Exp Hrs	Emp #
ARNOLD, EDWARD John	4.5	439784	DUBON, TODD N	4.5	443351	GAMBLE, BENJAMIN T	4.5	446666

Equipment

HES Unit #	Distance-1 way	HES Unit #	Distance-1 way	HES Unit #	Distance-1 way	HES Unit #	Distance-1 way
10867423	120 mile	10897887	120 mile	10951250	120 mile	10973571	120 mile
11542767	120 mile						

Job Hours

Date	On Location Hours	Operating Hours	Date	On Location Hours	Operating Hours	Date	On Location Hours	Operating Hours
8-29-10	4.5	2.5						

TOTAL	Total is the sum of each column separately							
-------	--	--	--	--	--	--	--	--

Job

Job Times

Formation Name	Formation Depth (MD)	Top	Bottom	Form Type	Job depth MD	Job Depth TVD	Water Depth	Perforation Depth (MD)	From	To	Deparated Loc	Date	Time	Time Zone
				BHST	805. ft	805. ft						29 - Aug - 2010	03:30	MST
												29 - Aug - 2010	03:30	MST
												29 - Aug - 2010	06:24	MST
												29 - Aug - 2010	07:19	MST
												29 - Aug - 2010	08:00	MST

Well Data

Description	New / Used	Max pressure psig	Size in	ID in	Weight lbm/ft	Thread	Grade	Top MD ft	Bottom MD ft	Top TVD ft	Bottom TVD ft
OPEN HOLE				12.375				.	805.		
SURFACE CASING	Unknown		9.625	8.921	36.		J-55	.	784.5		

Sales/Rental/3rd Party (HES)

Description	Qty	Qty uom	Depth	Supplier
PLUG,CMTG,TOP,9 5/8,HWE,8.16 MIN/9.06 MA	1	EA		
R/A DENSOMETER W/CHART RECORDER,/JOB,ZI	1	JOB		
ADC (AUTO DENSITY CTRL) SYS,/JOB,ZI	1	JOB		

Tools and Accessories

Type	Size	Qty	Make	Depth	Type	Size	Qty	Make	Depth	Type	Size	Qty	Make
Guide Shoe					Packer					Top Plug	9.625	HES	1
Float Shoe					Bridge Plug					Bottom Plug			
Float Collar					Retainer					SSR plug set			
Insert Float										Plug Container	9.625	HES	1
Stage Tool										Centralizers			

Miscellaneous Materials

Gelling Agt	Conc	Surfactant	Conc	Acid Type	Qty	Conc	%
Treatment Fld	Conc	Inhibitor	Conc	Sand Type	Size	Qty	

Fluid Data

Stage/Plug #: 1

Fluid #	Stage Type	Fluid Name	Qty	Qty uom	Mixing Density lbm/gal	Yield ft ³ /sk	Mix Fluid Gal/sk	Rate bbl/min	Total Mix Fluid Gal/sk
1	Water Spacer		20.00	bbl	8.33	.0	.0	5	
2	Lead Cement	VERSACEM (TM) SYSTEM (452010)	120.0	sacks	12.3	2.38	13.77	5	13.77
		13.77 Gal	FRESH WATER						
3	Tail Cement	SWIFTCES (TM) SYSTEM (452990)	120.0	sacks	14.2	1.43	6.85	5	6.85
		6.85 Gal	FRESH WATER						
4	Displacement		57.00	bbl	8.33	.0	.0	5	
Calculated Values		Pressures		Volumes					
Displacement	57.2	Shut In: Instant		Lost Returns		Cement Slurry	81.3	Pad	
Top Of Cement	SURFACE	5 Min		Cement Returns	17	Actual Displacement	57.2	Treatment	
Frac Gradient		15 Min		Spacers	20	Load and Breakdown		Total Job	158.5
Rates									
Circulating		Mixing	5	Displacement	5	Avg. Job	5		
Cement Left In Pipe	Amount	44.3 ft	Reason	Shoe Joint					
Frac Ring # 1 @	ID	Frac ring # 2 @	ID	Frac Ring # 3 @	ID	Frac Ring # 4 @	ID		
The Information Stated Herein Is Correct				Customer Representative Signature					

The Road to Excellence Starts with Safety

Sold To #: 343492	Ship To #: 2802174	Quote #:	Sales Order #: 7579387
Customer: BILL BARRETT CORPORATION E-BILL	Customer Rep: South, Jodi		
Well Name: GGU FED	Well #: 43B-29-691	API/UWI #:	
Field: PICEANCE	City (SAP):	County/Parish: Garfield	State: Colorado
Legal Description:			
Lat: N 0 deg. OR N 0 deg. 0 min. 0 secs.		Long: E 0 deg. OR E 0 deg. 0 min. 0 secs.	
Contractor: BARRETT	Rig/Platform Name/Num: PETRO PLUS		
Job Purpose: Cement Surface Casing	Ticket Amount:		
Well Type: Development Well	Job Type: Cement Surface Casing		
Sales Person: METLI, MARSHALL	Srv Supervisor: ARNOLD, EDWARD	MBU ID Emp #: 439784	

Activity Description	Date/Time	Cht #	Rate bbl/min	Volume bbl		Pressure psig		Comments
				Stage	Total	Tubing	Casing	
Arrive At Loc	08/29/2010 03:30							Rig still drilling. Crew on location from previous job.
Call Out	08/29/2010 03:30							
Assessment Of Location Safety Meeting	08/29/2010 03:45							Water test: PH 7; Hardness 120; So4 <200; Fe 0; KCl 250; Chlorides 0; Temp 68 deg.
Pre-Rig Up Safety Meeting	08/29/2010 04:00							Including entire cement crew
Rig-Up Equipment	08/29/2010 04:05							1 Elite # 1; 1 660 bulk truck; 1 hard line from pump to well head; 1 lines to upright. 9.625" screw in head #B0679
Rig-Up Completed	08/29/2010 04:45							
Pre-Job Safety Meeting	08/29/2010 04:50							Including everyone on location
Start Job	08/29/2010 06:24							TD 805; TP 784.5; SJ 44.34; OH 12.375"; CASING 9.625" 36# J-55.
Other	08/29/2010 06:25		2	2			.0	Fill lines with fresh water.
Pressure Test	08/29/2010 06:27						2400.0	PSI test good, no leaks.
Pump Spacer 1	08/29/2010 06:30		5	20			56.0	20 BBL fresh water.
Pump Lead Cement	08/29/2010 06:41		5	50.8			95.0	120 SKs Lead cement, 12.3 ppg; 2.38 cf3; 13.75 gal/sk.
Activity Description	Date/Time	Cht #	Rate bbl/min	Volume bbl		Pressure psig		Comments
				Stage	Total	Tubing	Casing	

Sold To #: 343492

Ship To #: 2802174

Quote #:

Sales Order #:

7579387

Cementing Job Log

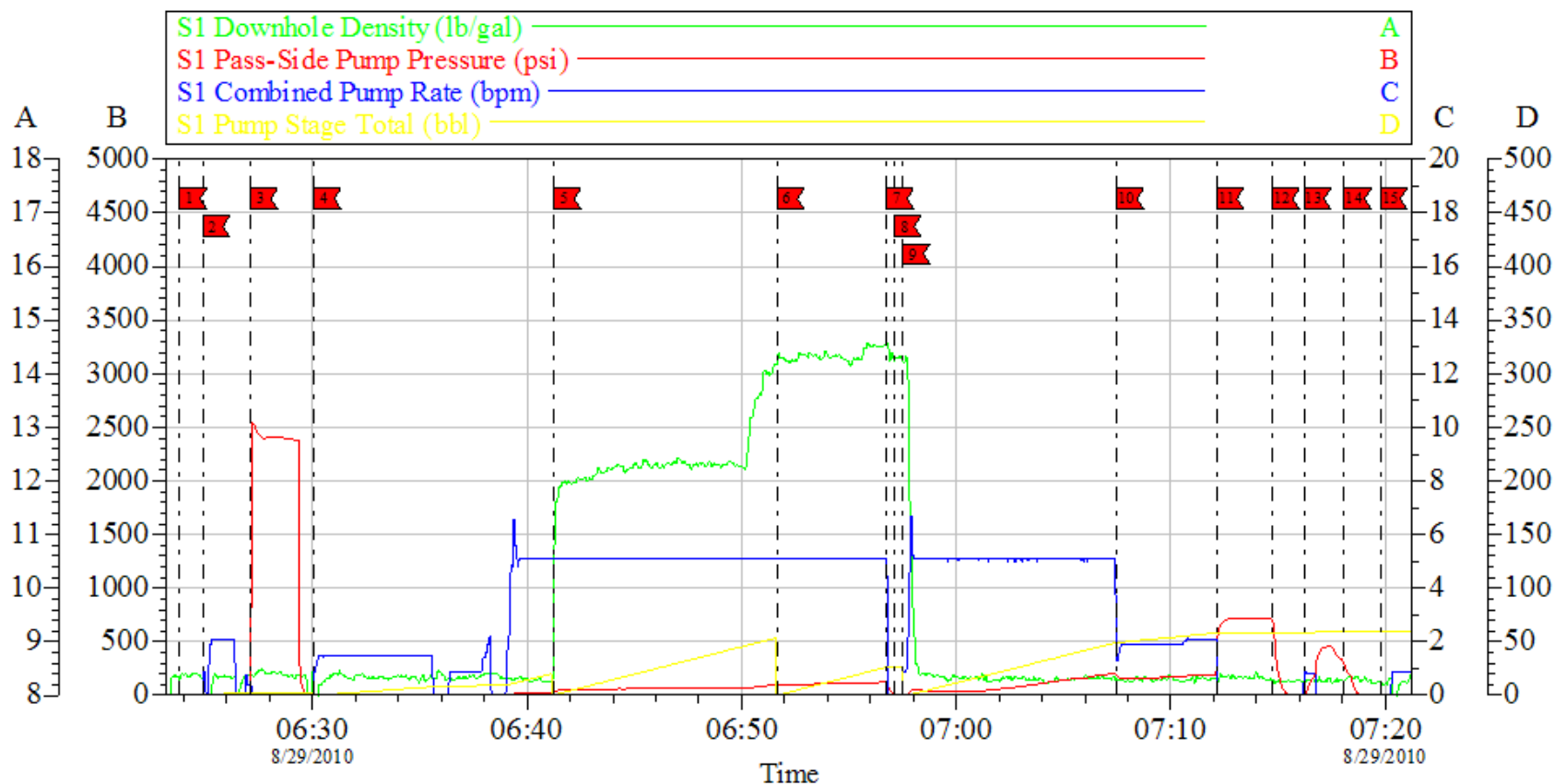
Pump Tail Cement	08/29/2010 06:51		5	30.5			120.0	120 SKs Tail cement, 14.2 ppg; 1.43 cf3; 6.88 gal/sk.
Shutdown	08/29/2010 06:56							
Drop Plug	08/29/2010 06:56							Plug left container.
Pump Displacement	08/29/2010 06:57		5	47.2			170.0	Fresh Water Displacement
Slow Rate	08/29/2010 07:07		2	10			180.0	Slow rate last ten BBLs
Bump Plug	08/29/2010 07:12				57.2		719.0	Bumped plug took 500 psi over.
Check Floats	08/29/2010 07:14							Floats were leaking.
Bump Plug	08/29/2010 07:16						400.0	Pressure up on well.
Shut In Well	08/29/2010 07:18						200.0	Shut in well with 200 PSI on well.
End Job	08/29/2010 07:19							
Pre-Rig Down Safety Meeting	08/29/2010 07:30							Including entire cement crew.
Standby - Other - see comments	08/29/2010 08:00							Wait on location for next job.
Other	08/29/2010 08:00							Thank You for using Halliburton. Ed Arnold and crew.



BILL BARRETT

9.625" SURFACE

GGU FED 43B-29-691



Local Event Log					
1 START JOB	06:23:49	2 FILL LINES	06:24:53	3 TEST LINES	06:27:06
4 PUMP H2O SPACER	06:30:04	5 PUMP LEAD CEMENT	06:41:15	6 PUMP TAIL CEMENT	06:51:39
7 SHUT DOWN	06:56:45	8 DROP PLUG	06:57:06	9 PUMP H2O DISPLACEMENT	06:57:31
10 SLOW RATE	07:07:28	11 BUMP PLUG	07:12:07	12 CHECK FLOATS	07:14:44
13 REBUMP PLUG	07:16:12	14 SHUT IN WELL	07:18:05	15 END JOB	07:19:45

Customer: BILL BARRETT
Well Description: GGU FED 43B-29-691
Company Rep: JODI SOUTH

Job Date: 29-Aug-2010
Job Type: 9.625" SURFACE
Cement Supervisor: ED ARNOLD

Sales Order #: 7579387
ADC Used: YES
Elite #1: TRACY GAMBLE

OptiCem v6.4.8
29-Aug-10 07:25