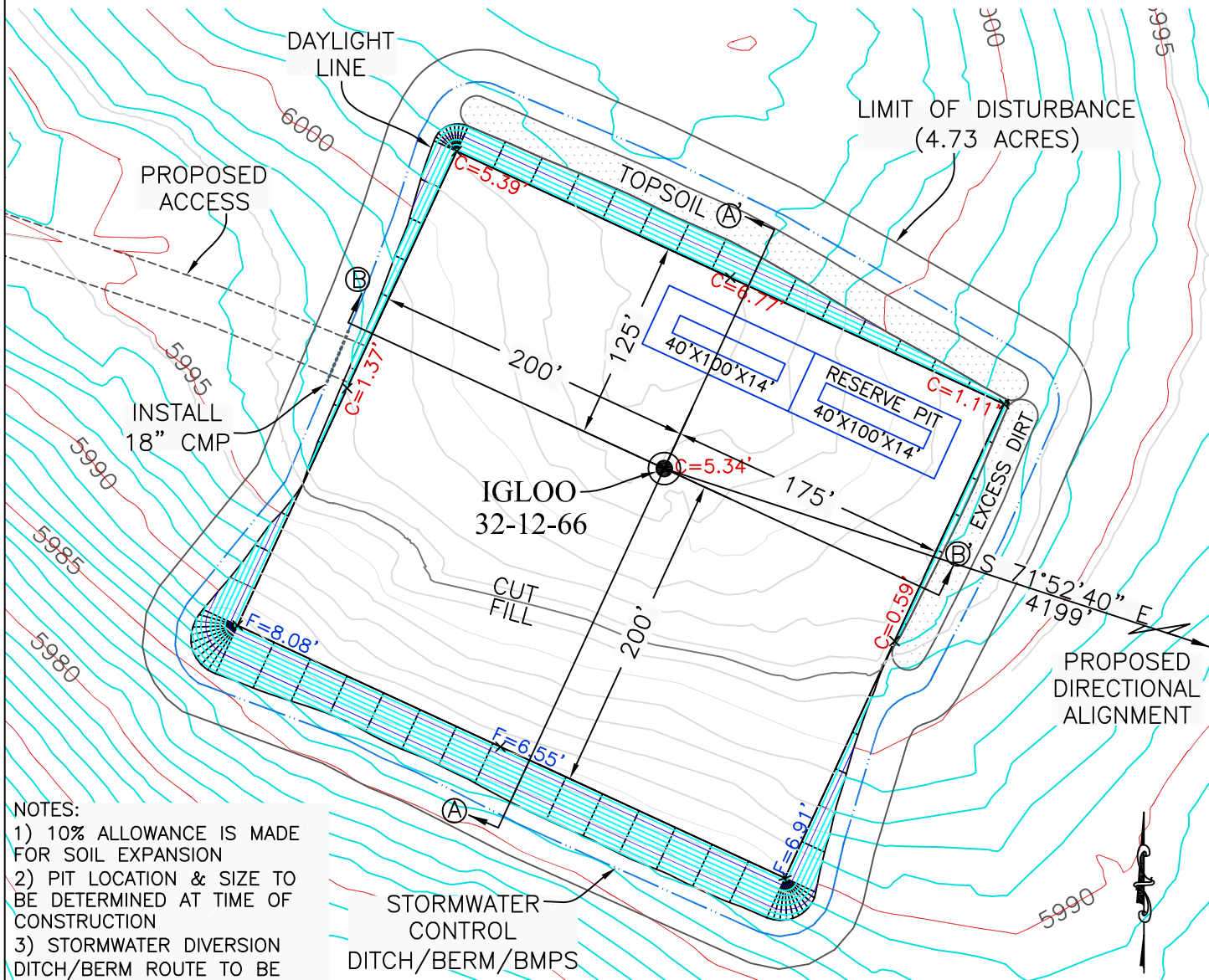
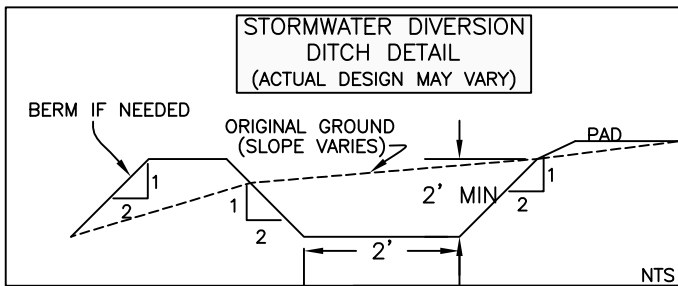
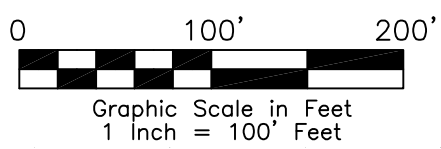


PAD LAYOUT DRAWING
IGLOO 32-12-66



- NOTES:
- 1) 10% ALLOWANCE IS MADE FOR SOIL EXPANSION
 - 2) PIT LOCATION & SIZE TO BE DETERMINED AT TIME OF CONSTRUCTION
 - 3) STORMWATER DIVERSION DITCH/BERM ROUTE TO BE DETERMINED BASED ON FINAL PAD ORIENTATION
 - 4) FILTER SOCKS OR OTHER BMPS MAY BE NECESSARY FOR EROSION CONTROL



PAD 325' X' 375' ELEV = 5996.6'				
DISTURBED AREA = 4.73 ACRES				
ESTIMATED DIRT QUANTITIES				
CUT	FILL+10%	TOPSOIL	PIT	EXCESS
12,012	6,654	5,337	2,515	21
NOTE: VOLUMES IN CUBIC YARDS. TOPSOIL VOL (12' DEPTH) IS INCLUDED IN TOTAL CUT VALUE ABOVE. PIT NOT INCLUDED IN TOTAL EXCESS VOLUME.				

WESTERN LAND SERVICES
Sheridan, WY 82801 (307)673-1817

DP: L:\...\Slawson\Permitting_Booklets\Igloo... Date: 9/02/2010

SLAWSON EXPLORATION COMPANY, INC
IGLOO 32-12-66

SL: NW1/4 SW1/4, SECTION 32, T12N R66W
BL: SE1/4 SE1/4, SECTION 32, T12N R66W
6TH PM, WELD COUNTY, COLORADO