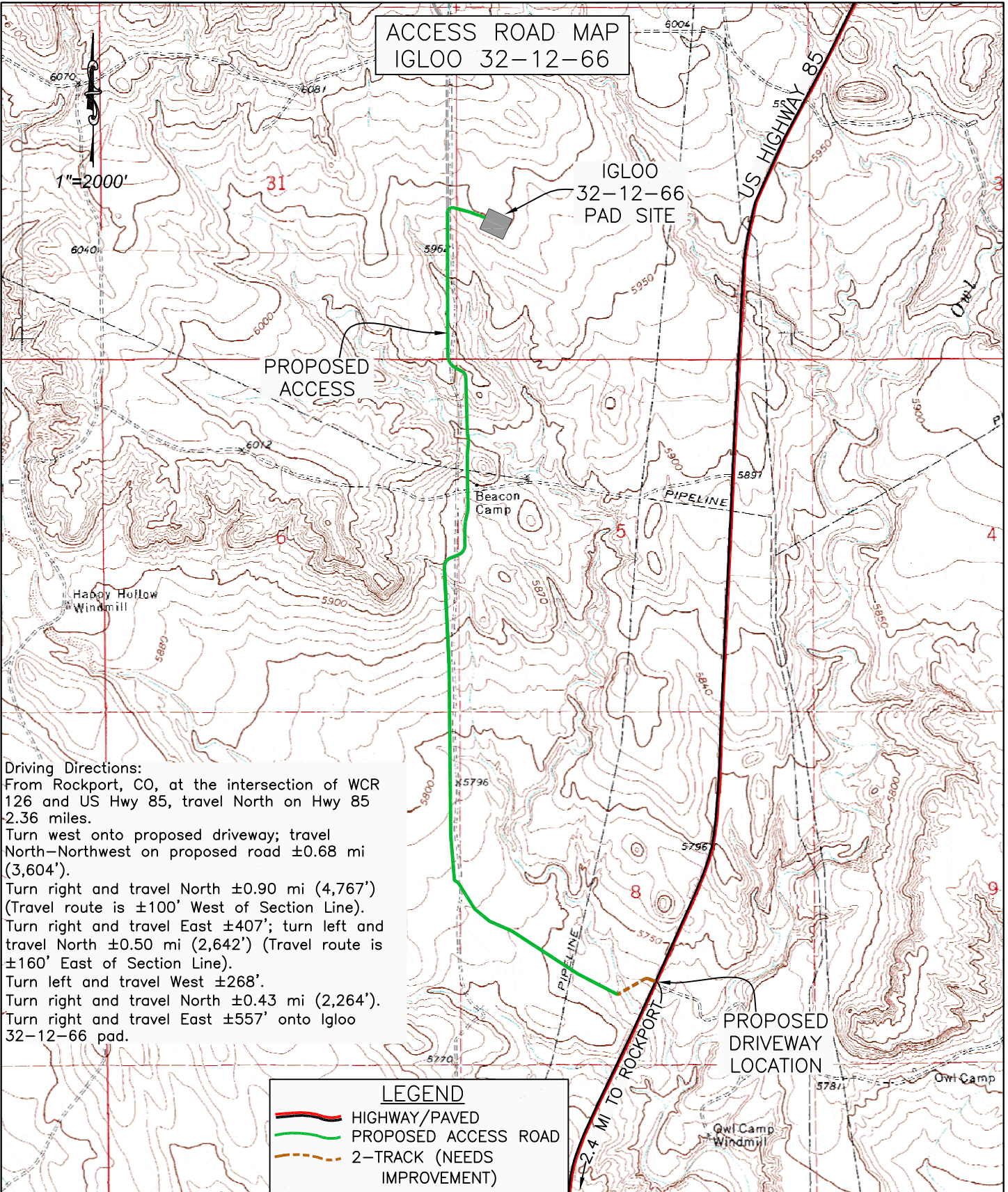





ACCESS ROAD MAP
IGLOO 32-12-66



Driving Directions:
 From Rockport, CO, at the intersection of WCR 126 and US Hwy 85, travel North on Hwy 85 2.36 miles.
 Turn west onto proposed driveway; travel North-Northwest on proposed road ± 0.68 mi (3,604').
 Turn right and travel North ± 0.90 mi (4,767') (Travel route is $\pm 100'$ West of Section Line).
 Turn right and travel East $\pm 407'$; turn left and travel North ± 0.50 mi (2,642') (Travel route is $\pm 160'$ East of Section Line).
 Turn left and travel West $\pm 268'$.
 Turn right and travel North ± 0.43 mi (2,264').
 Turn right and travel East $\pm 557'$ onto Igloo 32-12-66 pad.

LEGEND

-  HIGHWAY/PAVED
-  PROPOSED ACCESS ROAD
-  2-TRACK (NEEDS IMPROVEMENT)


WESTERN LAND SERVICES
 Sheridan, WY 82801 (307)673-1817

SLAWSON EXPLORATION COMPANY, INC
 IGLOO 32-12-66

SL: NW1/4 SW1/4, SECTION 32, T12N R66W
 BL: SE1/4 SE1/4, SECTION 32, T12N R66W
 6TH PM, WELD COUNTY, COLORADO