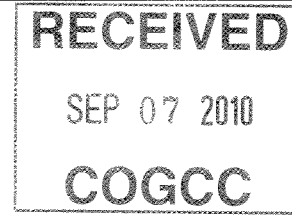




**Andrews, David**

**From:** Andrews, David  
**Sent:** Tuesday, September 07, 2010 4:14 PM  
**To:** 'Caplis, Chris'  
**Subject:** RE: Braden Charts form SP 522



Chris,

Thanks for the update, and please proceed. I suggest that you continue monitoring bradenhead pressures on this pad until remediation is performed. As requested previously, please submit your remedial cement procedure on Form 4 for approval prior to performing the work.

**David D. Andrews, P.E., P.G.**  
Engineering Supervisor - Western Colorado

**State of Colorado**  
**Oil and Gas Conservation Commission**  
707 Wapiti Court, Suite 204  
Rifle, Colorado 81650  
Office Phone: (970) 625-2497 Ext. 1  
Cell Phone: (970) 456-5262  
Fax: (970) 625-5682  
E-mail: [David.Andrews@state.co.us](mailto:David.Andrews@state.co.us)  
Website: <http://www.colorado.gov/cogcc>

**CC: COGCC Well File, API No. 05-045-18824**

---

**From:** Caplis, Chris [mailto:Chris.Caplis@Williams.com]  
**Sent:** Tuesday, September 07, 2010 11:16 AM  
**To:** Andrews, David  
**Subject:** Braden Charts form SP 522

Hello Dave,

Attached are charts showing braden head pressure for the SP 522-14 along with the other three wells on the pad (SP 321-14, SP 13-14, SP 411-14) for the last 3 frac stages on the SP 522-14. We discussed moving forward with completions a couple of weeks ago even though we had a small casing leak. The braden head showed no pressure build up during all three stages for all 4 wells.

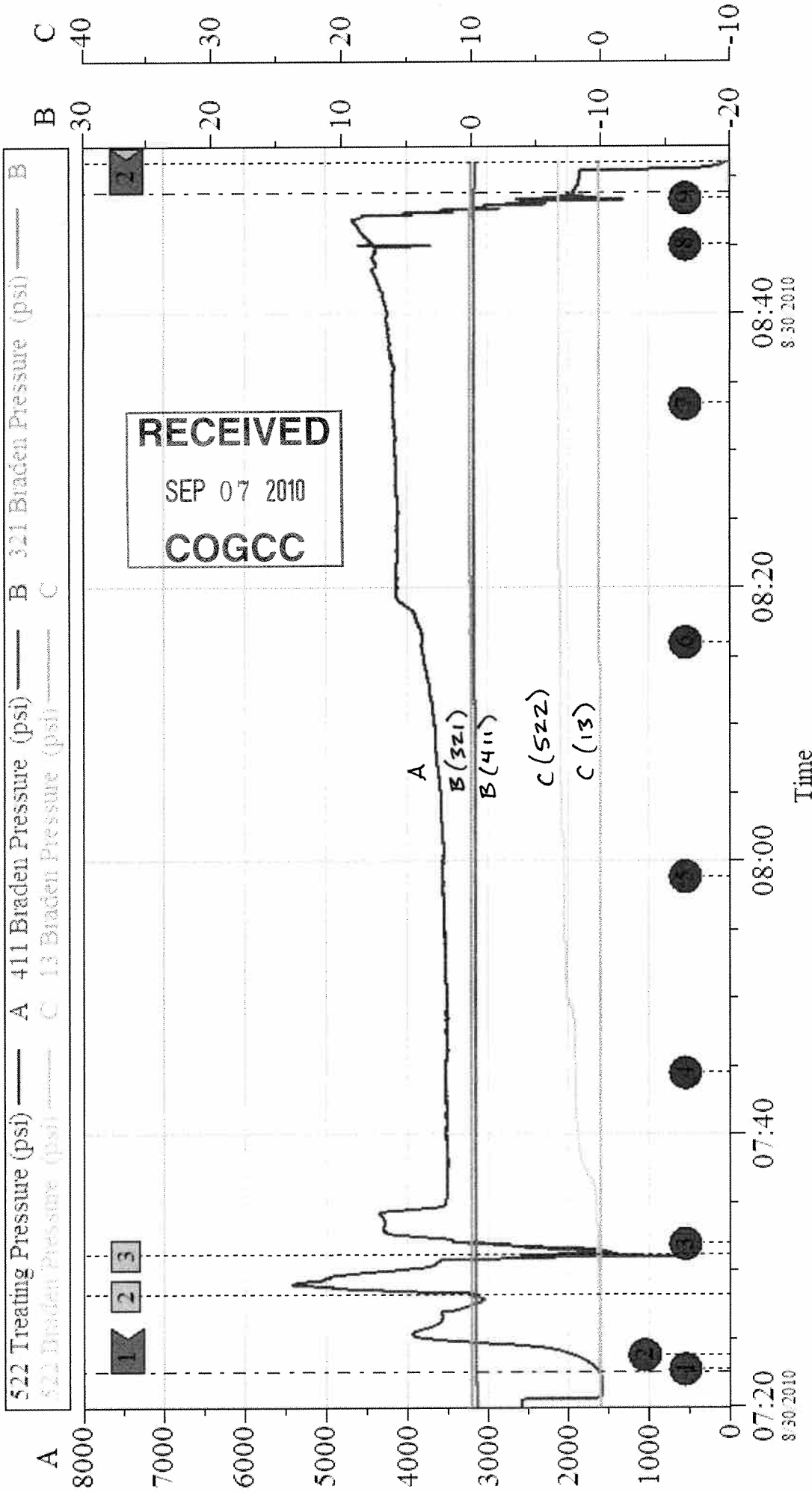
The plan is to remediate the cement job on the SP 522-14 once all wells are completed on the pad – per the BLM, which should happen in the next couple of weeks. This allows us to efficiently move in a rig and drill out plugs/remediate, etc...in the same visit. If you have any issue with this please let me know.

Thanks again for working with us on this Dave.

Regards,

**Chris Caplis**  
Completions Engineer  
Williams Production Co.  
Ofc: 303-606-4041  
Cell: 303-601-4884  
[chris.caplis@williams.com](mailto:chris.caplis@williams.com)

# Braden Chart

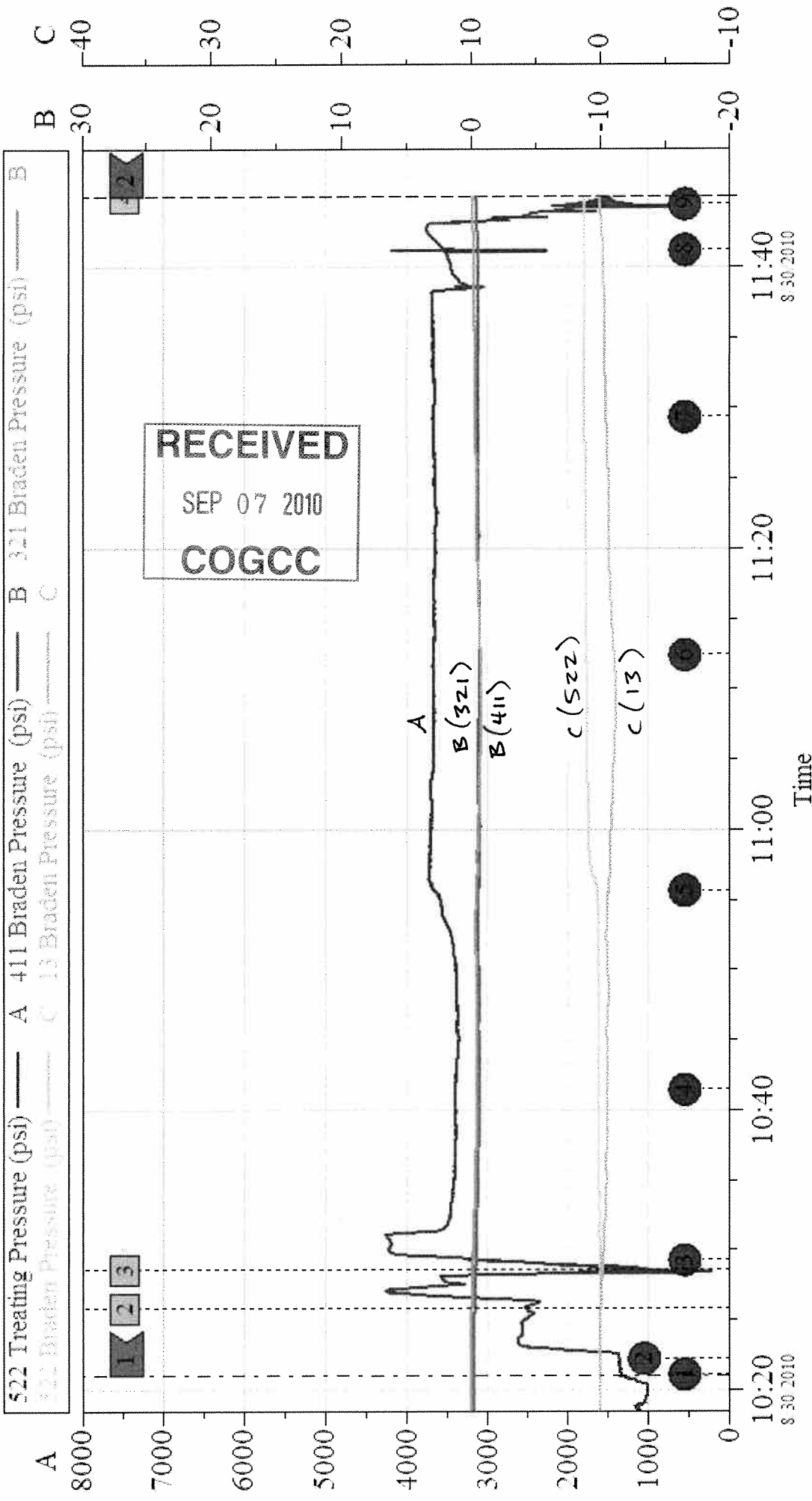


MV 3 FRAC STAGE

Customer: WILLIAMS PRODUCTION RMT INC	Job Date: 30-Aug-2010	Sales Order #: 7601077
Well Description: SP 522-14	UWI: 05-045-18824	

INSITE for Stimulation v4.0.0  
30-Aug-10 08:54

# Braden Chart



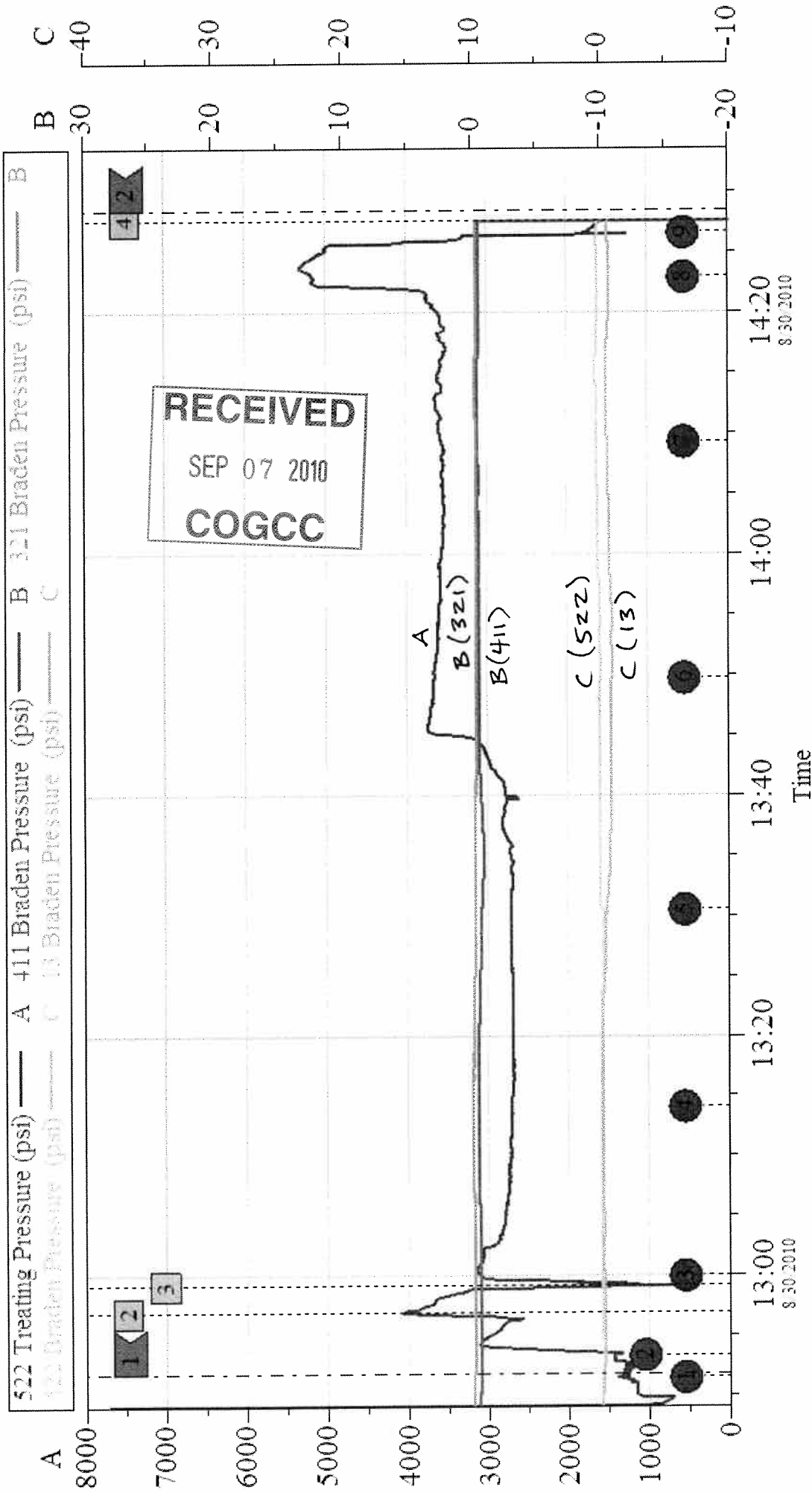
Local Event Log

Maximum	TP	IP3	IP4	IP5	IP6	
1	10:21:00	4259	-0.203	0.066	1.286	0.050
2	11:45:02	1493	-0.326	-0.055	1.275	0.050

MV 4 FRAC STAGE

Customer: WILLIAMS PRODUCTION RMT INC      Job Date: 30-Aug-2010      Sales Order #: 7587257  
 Well Description: SP 522-14      UWI: 05-045-18824

# Braden Chart



Local Event Log

Maximum	TP	IP3	IP4	IP5	IP6	
1	12:51:47	5318	-0.535	-0.098	0.327	-0.150
2	14:28:31	1593	-73.33	-0.411	0.162	-0.641

MVS FRAC STAGE

Customer: WILLIAMS PRODUCTION RMT INC      Job Date: 30-Aug-2010      Sales Order #: 7587262

Well Description: SP 522-14      UWI: 05-045-18824

INSITE for Stimulation v4-0.0  
30-Aug-10 14:34