

BILL BARRETT CORPORATION E-BILL
DO NOT MAIL-1099 18TH ST,STE 2300W
DENVER, Colorado

GGU FED
GGU FED 43A-29-691

BARRETT/PETRO PLUS

Post Job Summary

Cement Surface Casing

Prepared for: JODI SOUTH
Date Prepared: AUG 28,2010
Version: 1

Service Supervisor: ARNOLD, EDWARD

Submitted by:

HALLIBURTON

The Road to Excellence Starts with Safety

Sold To #: 343492	Ship To #: 2802128	Quote #:	Sales Order #: 7579382
Customer: BILL BARRETT CORPORATION E-BILL	Customer Rep: South, Jodi		
Well Name: GGU FED	Well #: 43A-29-691	API/UWI #:	
Field: PICEANCE	City (SAP):	County/Parish: Garfield	State: Colorado
Contractor: BARRETT	Rig/Platform Name/Num: PETRO PLUS		
Job Purpose: Cement Surface Casing			
Well Type: Development Well	Job Type: Cement Surface Casing		
Sales Person: METLI, MARSHALL	Srv Supervisor: ARNOLD, EDWARD	MBU ID Emp #:	439784

Job Personnel

HES Emp Name	Exp Hrs	Emp #	HES Emp Name	Exp Hrs	Emp #	HES Emp Name	Exp Hrs	Emp #
ARNOLD, EDWARD John	12	439784	GAMBLE, BENJAMIN T	12	446666	HAYES, JESSE Doug	12	403601

Equipment

HES Unit #	Distance-1 way	HES Unit #	Distance-1 way	HES Unit #	Distance-1 way	HES Unit #	Distance-1 way
10867304	120 mile	10951250	120 mile	10973571	120 mile	10998054	120 mile
11542767	120 mile						

Job Hours

Date	On Location Hours	Operating Hours	Date	On Location Hours	Operating Hours	Date	On Location Hours	Operating Hours
08-28-10	12	2						

TOTAL	Total is the sum of each column separately							
-------	--	--	--	--	--	--	--	--

Job

Job Times

Formation Name	Formation Depth (MD)	Top	Bottom	Called Out	Date	Time	Time Zone
Form Type	Job depth MD	850. ft	Job Depth TVD	850. ft	Job Started	28 - Aug - 2010	10:15
Water Depth	Wk Ht Above Floor	. ft	Job Completed	28 - Aug - 2010	11:09	MST	
Perforation Depth (MD)	From	To	Departed Loc	28 - Aug - 2010	12:00	MST	

Well Data

Description	New / Used	Max pressure psig	Size in	ID in	Weight lbm/ft	Thread	Grade	Top MD ft	Bottom MD ft	Top TVD ft	Bottom TVD ft
Open Hole				12.357				.	850.		
Surface Casing	Unknown		9.625	8.921	36.		J-55	.	830.8		

Sales/Rental/3rd Party (HES)

Description	Qty	Qty uom	Depth	Supplier
PLUG,CMTG, TOP, 9 5/8, HWE, 8.16 MIN/9.06 MA	1	EA		
R/A DENSOMETER W/CHART RECORDER, /JOB, ZI	1	JOB		

Tools and Accessories

Type	Size	Qty	Make	Depth	Type	Size	Qty	Make	Depth	Type	Size	Qty	Make
Guide Shoe					Packer					Top Plug	9.625	1	Hes
Float Shoe					Bridge Plug					Bottom Plug			
Float Collar					Retainer					SSR plug set			
Insert Float										Plug Container	9.625	1	Hes
Stage Tool										Centralizers			

Miscellaneous Materials

Gelling Agt	Conc	Surfactant	Conc	Acid Type	Qty	Conc	%
Treatment Fld	Conc	Inhibitor	Conc	Sand Type	Size	Qty	

Fluid Data

Stage/Plug #: 1	Fluid #	Stage Type	Fluid Name	Qty	Qty uom	Mixing Density lbm/gal	Yield ft ³ /sk	Mix Fluid Gal/sk	Rate bbl/min	Total Mix Fluid Gal/sk
-----------------	---------	------------	------------	-----	---------	------------------------	---------------------------	------------------	--------------	------------------------

1	Water Spacer		20.00	bbl	.	.0	.0	5	
2	Lead Cement	VERSACEM (TM) SYSTEM (452010)	120.0	sacks	12.3	2.38	13.77	5	13.77
	13.77 Gal	FRESH WATER							
3	Tail Cement	SWIFTCEM (TM) SYSTEM (452990)	120.0	sacks	14.2	1.43	6.85	5	6.85
	6.85 Gal	FRESH WATER							
4	Displacement		60.00	bbl	.	.0	.0	5	
Calculated Values		Pressures		Volumes					
Displacement	60.7	Shut In: Instant		Lost Returns		Cement Slurry	81.4	Pad	
Top Of Cement	Surface	5 Min		Cement Returns	10	Actual Displacement	60.7	Treatment	
Frac Gradient		15 Min		Spacers	20	Load and Breakdown		Total Job	162.1
Rates									
Circulating		Mixing	5	Displacement	5	Avg. Job			5
Cement Left In Pipe	Amount	44.9 ft	Reason	Shoe Joint					
Frac Ring # 1 @	ID	Frac ring # 2 @	ID	Frac Ring # 3 @	ID	Frac Ring # 4 @	ID		
The Information Stated Herein Is Correct				Customer Representative Signature					

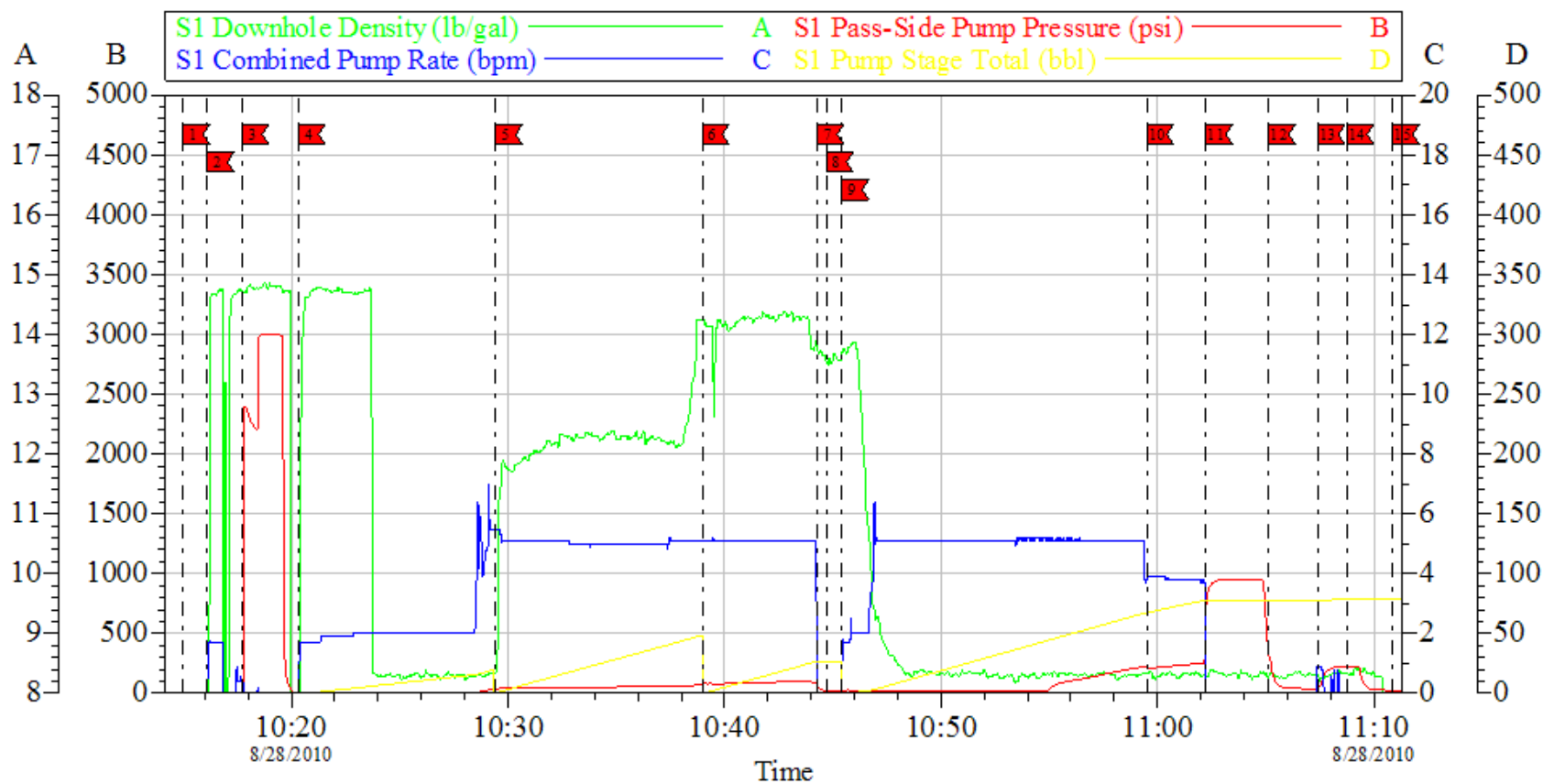
The Road to Excellence Starts with Safety

Sold To #: 343492		Ship To #: 2802128		Quote #:		Sales Order #: 7579382	
Customer: BILL BARRETT CORPORATION E-BILL				Customer Rep: South, Jodi			
Well Name: GGU FED			Well #: 43A-29-691		API/UWI #:		
Field: PICEANCE		City (SAP):		County/Parish: Garfield		State: Colorado	
Legal Description:							
Lat: N 0 deg. OR N 0 deg. 0 min. 0 secs.				Long: E 0 deg. OR E 0 deg. 0 min. 0 secs.			
Contractor: BARRETT			Rig/Platform Name/Num: PETRO PLUS				
Job Purpose: Cement Surface Casing						Ticket Amount:	
Well Type: Development Well			Job Type: Cement Surface Casing				
Sales Person: METLI, MARSHALL			Srvc Supervisor: ARNOLD, EDWARD			MBU ID Emp #: 439784	

Activity Description	Date/Time	Cht #	Rate bbl/min	Volume bbl		Pressure psig		Comments
				Stage	Total	Tubing	Casing	
Call Out	08/28/2010 05:00							
Pre-Convoy Safety Meeting	08/28/2010 05:15							Including entire cement crew
Arrive At Loc	08/28/2010 07:30							Rig still drilling.
Assessment Of Location Safety Meeting	08/28/2010 07:45							Water test: PH 7; Hardness 120; So4 <200; Fe 0; KCl 250; Chlorides 0; Temp 68 deg.
Pre-Rig Up Safety Meeting	08/28/2010 08:45							Including entire cement crew
Rig-Up Equipment	08/28/2010 09:00							1 Elite # 1; 1 660 bulk truck; 1 hard line from pump to well head; 1 lines to upright. 9.625" screw in head #B0679
Pre-Job Safety Meeting	08/28/2010 10:00							Including everyone on location
Start Job	08/28/2010 10:15							TD 850; TP 830.83; SJ 40.98; OH 12.375"; CASING 9.625" 36# J-55.
Other	08/28/2010 10:16		1	1			.0	Fill lines with fresh water.
Pressure Test	08/28/2010 10:17						2400.0	PSI test good, no leaks.
Pump Spacer 1	08/28/2010 10:20		5	20			25.0	20 BBL fresh water.
Pump Lead Cement	08/28/2010 10:29		5	50.8			80.0	120 SKs Lead cement, 12.3 ppg; 2.38 cf3; 13.75 gal/sk.
Pump Tail Cement	08/28/2010 10:39		5	30.6			100.0	120 SKs Tail cement, 14.2 ppg; 1.43 cf3; 6.88 gal/sk.

Activity Description	Date/Time	Cht #	Rate bbl/min	Volume bbl		Pressure psig		Comments
				Stage	Total	Tubing	Casing	
Shutdown	08/28/2010 10:44							
Drop Plug	08/28/2010 10:45							Plug left container.
Pump Displacement	08/28/2010 10:46		5	50.7			225.0	Fresh Water Displacement
Slow Rate	08/28/2010 10:54		4	10			250.0	Slow rate last ten BBLs
Bump Plug	08/28/2010 11:02				60.7		950.0	Bumped plug took 500 psi over.
Check Floats	08/28/2010 11:04							Floats held. BBL back.
Bump Plug	08/28/2010 11:07						220.0	Rebump plug floats leaking. Left 200 psi on well.
Shut In Well	08/28/2010 11:08						220.0	
Rig-Up Completed	08/28/2010 11:09							
End Job	08/28/2010 11:10							
Pre-Rig Down Safety Meeting	08/28/2010 11:15							Including entire cement crew.
Standby - Other - see comments	08/28/2010 11:45							Wait on location for next job.
Other	08/28/2010 11:45							Thank You for using Halliburton. Ed Arnold and crew.

Bill Barrett
9.625" Surface
GGU FED 43A-29-291



Local Event Log					
1 START JOB	10:15:00	2 FILL LINES	10:16:07	3 TEST LINES	10:17:43
4 PUMP H2O SPACER	10:20:20	5 PUMP LEAD CEMENT	10:29:26	6 PUMP TAIL CEMENT	10:38:59
7 SHUT DOWN	10:44:17	8 DROP PLUG	10:44:43	9 PUMP H2O DISPLACEMENT	10:45:25
10 SLOW RATE	10:59:30	11 BUMP PLUG	11:02:14	12 CHECK FLOATS	11:05:08
13 BUMP PLUG	11:07:25	14 SHUT IN WELL	11:08:45	15 END JOD	11:10:52

Customer: BILL BARRETT
Well Description: GGU FED 43A-29-691
Company Rep: JODI SOUTH

Job Date: 28-Aug-2010
Job Type: 9.625" SURFACE
Cement Supervisor: ED AARNOLD

Sales Order #: 7579382
ADC Used: YES
Elite # 1: TRACY GAMBLE

OptiCem v6.4.8
28-Aug-10 11:15