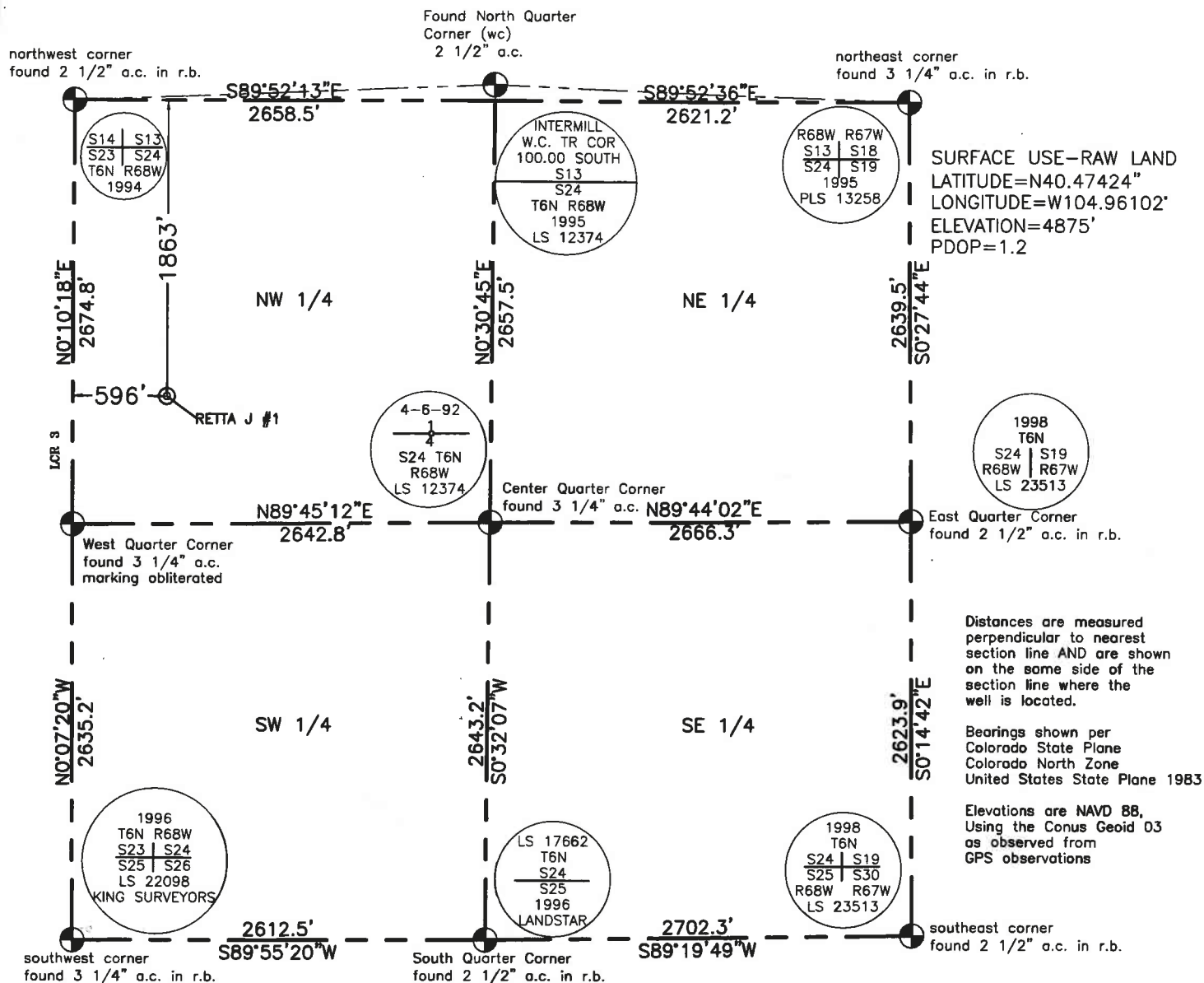
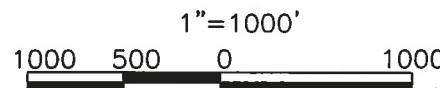


LOCATION
RETTA J #1



Lamp, Rynearson & Associates, Inc., of Greeley, Colorado has in accordance with a request from Walt Lowry for Rancher's Exploration Group, determined the surface location of the well designated as RETTA J #1 to be 1863' from the north line and 596' from the west line of Section 24, Township 6 North, Range 68 West of the 6th P.M., Weld County, Colorado.

Frank A. Kohl
Colorado PLS 37067



LEGEND
ac = aluminum cap
r.b. = range box



LAMP RYNEARSON
& ASSOCIATES

4715 Innovation Drive
Fort Collins, CO 80525
www.LRA-Inc.com
970.226.0342 | P
970.226.0879 | F

drawn by: SNC
designer: FAK
job number-tasks: 021033.00
date: 08-24-2010
scale: 1"=1000'
well name: RETTA J #1