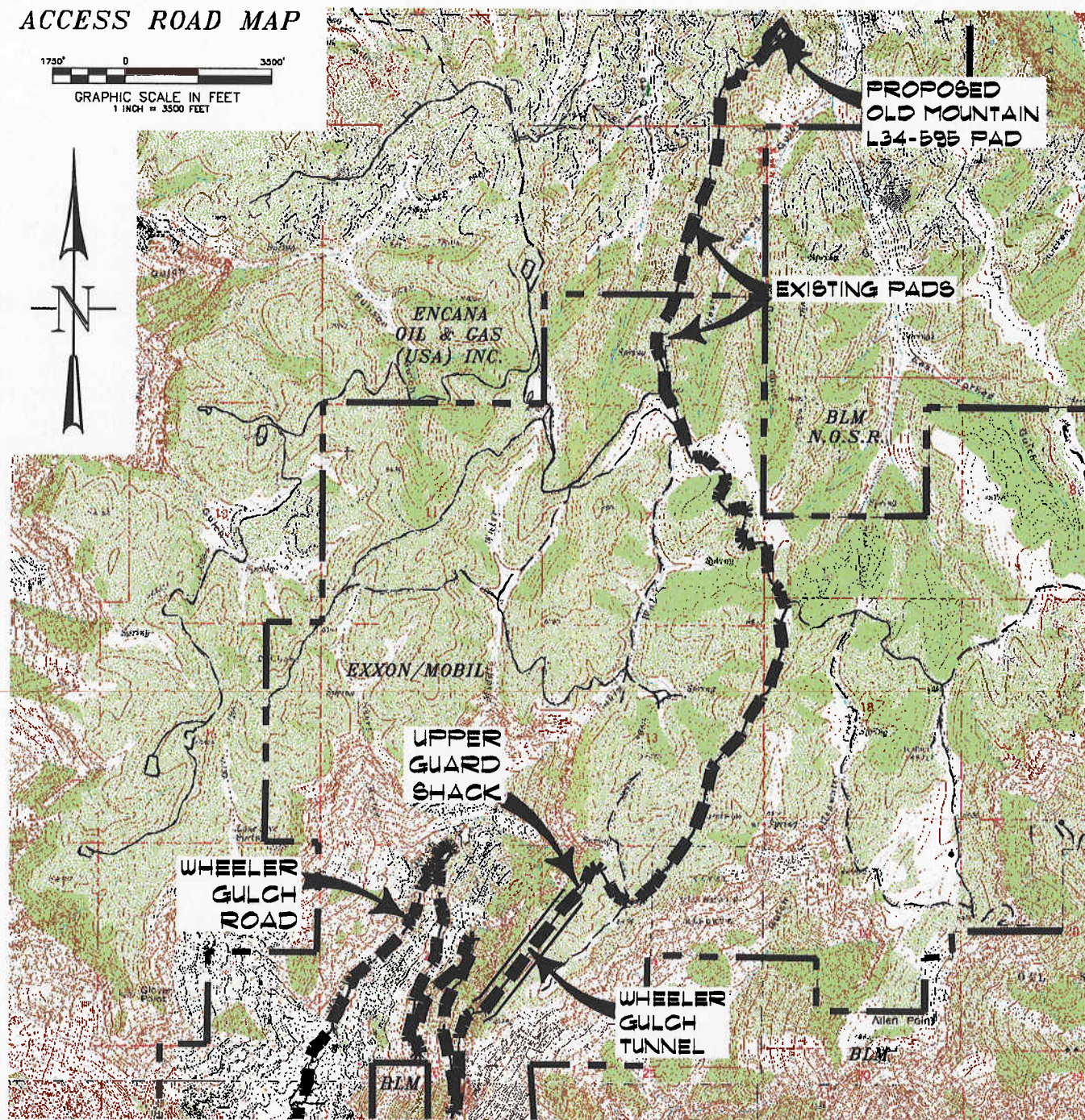


ACCESS ROAD MAP



ACCESS:
FROM THE INTERSECTION OF HIGHWAY 6 & 24 AND COUNTY ROAD 215 AT PARACHUTE, PROCEED NORTHWESTERLY ALONG COUNTY ROAD 215 APPROXIMATELY 3.5 MILES TO AN INTERSECTION WITH THE WHEELER GULCH ROAD ON THE RIGHT, PROCEED RIGHT IN A GENERAL NORTHEASTERLY DIRECTION APPROXIMATELY ± 6.0 MILES TO THE BEGINNING OF THE WHEELER GULCH TUNNEL, PROCEED THROUGH THE WHEELER GULCH TUNNEL ± 0.7 MILES TO THE UPPER GUARD SHACK, CONTINUE IN A GENERAL NORTHEASTERLY DIRECTION ± 2.8 MILES TO AN INTERSECTION WITH A WELL PAD ACCESS ROAD ON THE RIGHT, PROCEED RIGHT IN A GENERAL NORTHERLY DIRECTION PAST TWO EXISTING PADS ± 1.8 MILES TO THE PROPOSED OLD MOUNTAIN L34-595 WELL SITE, BEING THE LOCATION.



CONSTRUCTION SURVEYS, INC.
0012 SUNRISE BLVD.
SILT, CO 81652
(970)876-5753

Old Mountain L34-595
NW&W, SECTION 34, T. 5 S., R. 95 W.
BERRY PETROLEUM COMPANY

SCALE: 1" = 3500'

SHEET 4 OF 11