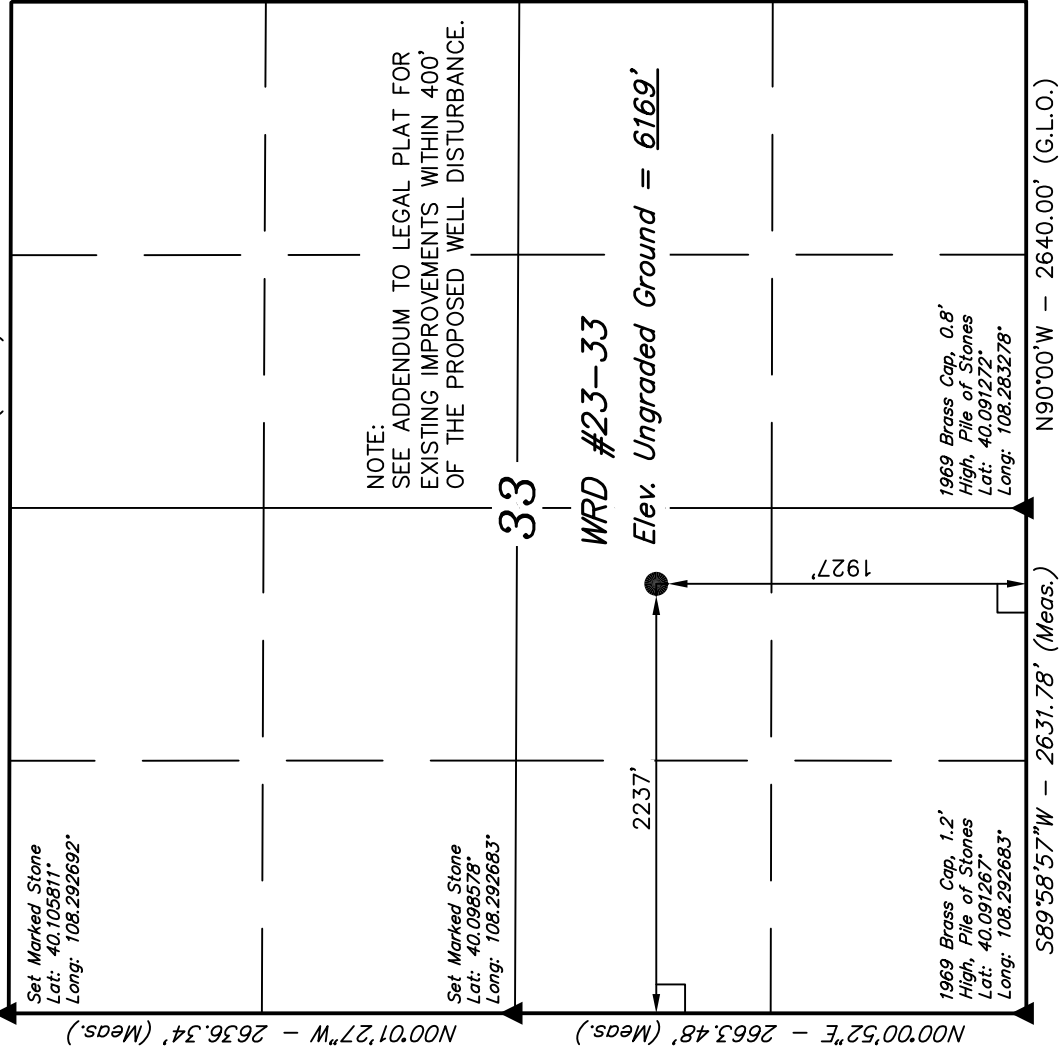


T2N, R97W, 6th P.M.

WHITING OIL & GAS CORP.

Well location, WRD #23-33, located as shown in the NE 1/4 SW 1/4 of Section 33, T2N, R97W, 6th P.M., Rio Blanco County, Colorado.



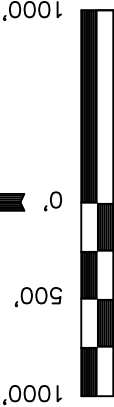
N00°02'W - 5280.00' (G.L.O.)

BASIS OF ELEVATION

SPOT ELEVATION AT A BRIDGE LOCATED IN THE SE 1/4 OF SECTION 34, T2N, R97W, 6th P.M. TAKEN FROM THE BARCUS CREEK SE, QUADRANGLE, COLORADO, RIO BLANCO COUNTY, 7.5 MINUTE QUAD. (TOPOGRAPHIC MAP) PUBLISHED BY THE UNITED STATES DEPARTMENT OF THE INTERIOR, GEOLOGICAL SURVEY. SAID ELEVATION IS MARKED AS BEING 5700 FEET.

BASIS OF BEARINGS

BASIS OF BEARINGS IS A G.P.S. OBSERVATION.



S C A L E

CERTIFICATE

THIS IS TO CERTIFY THAT THE ABOVE PLAT WAS PREPARED FROM FIELD NOTES OF ACTUAL SURVEYS MADE BY ME OR UNDER MY SUPERVISION AND THAT THE SAME ARE TRUE AND CORRECT TO THE BEST OF MY KNOWLEDGE AND BELIEF.

REGISTERED LAND SURVEYOR
REGISTRATION NO. 17492
STATE OF COLORADO

UNTAH ENGINEERING & LAND SURVEYING

85 SOUTH 200 EAST - VERNAL, UTAH 84078

(435) 789-1017

SCALE 1" = 1000'	DATE SURVEYED: 07-30-10	DATE DRAWN: 08-04-10
PARTY B.H. N.F. C.C.	REFERENCES G.L.O. PLAT	
WEATHER HOT	FILE	WHITING OIL & GAS CORP.

LEGEND:

— = 90° SYMBOL

● = PROPOSED WELL HEAD.

▲ = SECTION CORNERS LOCATED.

PDOP = 2.9

(NAD 83)
LATITUDE = 40°05'47.61" (40.096558)
LONGITUDE = 108°17'04.89" (108.284692)
(NAD 27)
LATITUDE = 40°05'47.72" (40.096589)
LONGITUDE = 108°17'02.57" (108.284047)