

T9S, R93W, 6th P.M.

DELTA PETROLEUM CORP.

2007 Private Alum.
Cap, 0.8' High,
R/LS #17492, Single
Proportion
Lat: 39.267867°
Long: 107.129931°

S82°58'08"E
1208.25' (Meas.)

2001 Alum. Cap,
0.2' High, Steel
Post, LS #23877
Lat: 39.267461°
Long: 107.125697°

S82°56'50"E - 3625.86' (Meas.)

R 93
R 92
W W

1921 Brass Cap,
1.1' High, N-S
Fence, High, LS
Lat: 39.266233°
Long: 107.12992°

NVega #24-14H (OPTION 2)
Elev. Ungraded Ground = 7598'

833'
500'
POINT OF ENTRY

NOTE:
— SEE ADDENDUM TO LEGAL PLAT FOR
EXISTING IMPROVEMENTS WITHIN 400'
OF THE PROPOSED DISTURBANCE.

LINE TABLE		
LINE	BEARING	LENGTH
L1	S41°00'45"W	501.84'

N00°38'02"W - 3969.84' (Meas.)

24

2001 Private Alum.
Cap, 0.5' Below
Ground, E-W
Fence, Steel
Post
Lat: 39.26972°
Long: 107.129781°

N00°38'19"W
1322.91' (Meas.)

1999 Private Alum.
Cap, 0.3' High, N-S
Fence, LS
#16413
Lat: 39.253342°
Long: 107.129731°

N82°28'33"W
1207.81' (Meas.)

2001 Private Alum.
Cap, 0.2' High, Steel
Post, LS #23877
Lat: 39.252908°
Long: 107.125506°

N82°28'38"W
1208.00' (Meas.)

1999 Private Alum.
Cap, 0.2' High, LS
#16413
Lat: 39.252472°
Long: 107.121278°

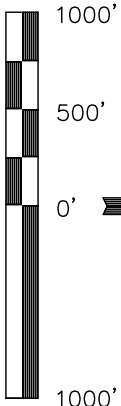
N82°28'17"W - 2416.18' (Meas.)

2004 Private Alum.
Cap, 0.3' N-S
Fence, High, LS
#23877
Lat: 39.251600°
Long: 107.12822°

S00°32'26"E - 2665.23' (Meas.)

1921 Brass Cap,
0.2' High, N-S
Fence, High, LS
Lat: 39.258919°
Long: 107.12908°

S00°33'52"E - 2667.22' (Meas.)



SCALE

CERTIFICATE

THIS IS TO CERTIFY THAT THE ABOVE PLAT WAS PREPARED FROM
FIELD NOTES OF ACTUAL SURVEYS MADE BY ME, OR UNDER MY
SUPERVISION AND THAT THE SAME ARE TRUE AND CORRECT TO THE
BEST OF MY KNOWLEDGE AND BELIEF.

REGISTERED LAND SURVEYOR
REGISTRATION NO. 17492
STATE OF COLORADO

UINTAH ENGINEERING & LAND SURVEYING

85 SOUTH 200 EAST - VERNAL, UTAH 84078

(435) 789-1017

SCALE
1" = 1000'

DATE SURVEYED: 08-25-10

DATE DRAWN: 08-30-10

PARTY
B.H. C.G. M.D.

REFERENCES
G.L.O. PLAT

WEATHER
WARM

FILE
DELTA PETROLEUM CORP.

LEGEND:

— 90° SYMBOL

● = PROPOSED WELL HEAD.

▲ = SECTION CORNERS LOCATED.

T9S, R93W, 6th P.M.

DELTA PETROLEUM CORP.

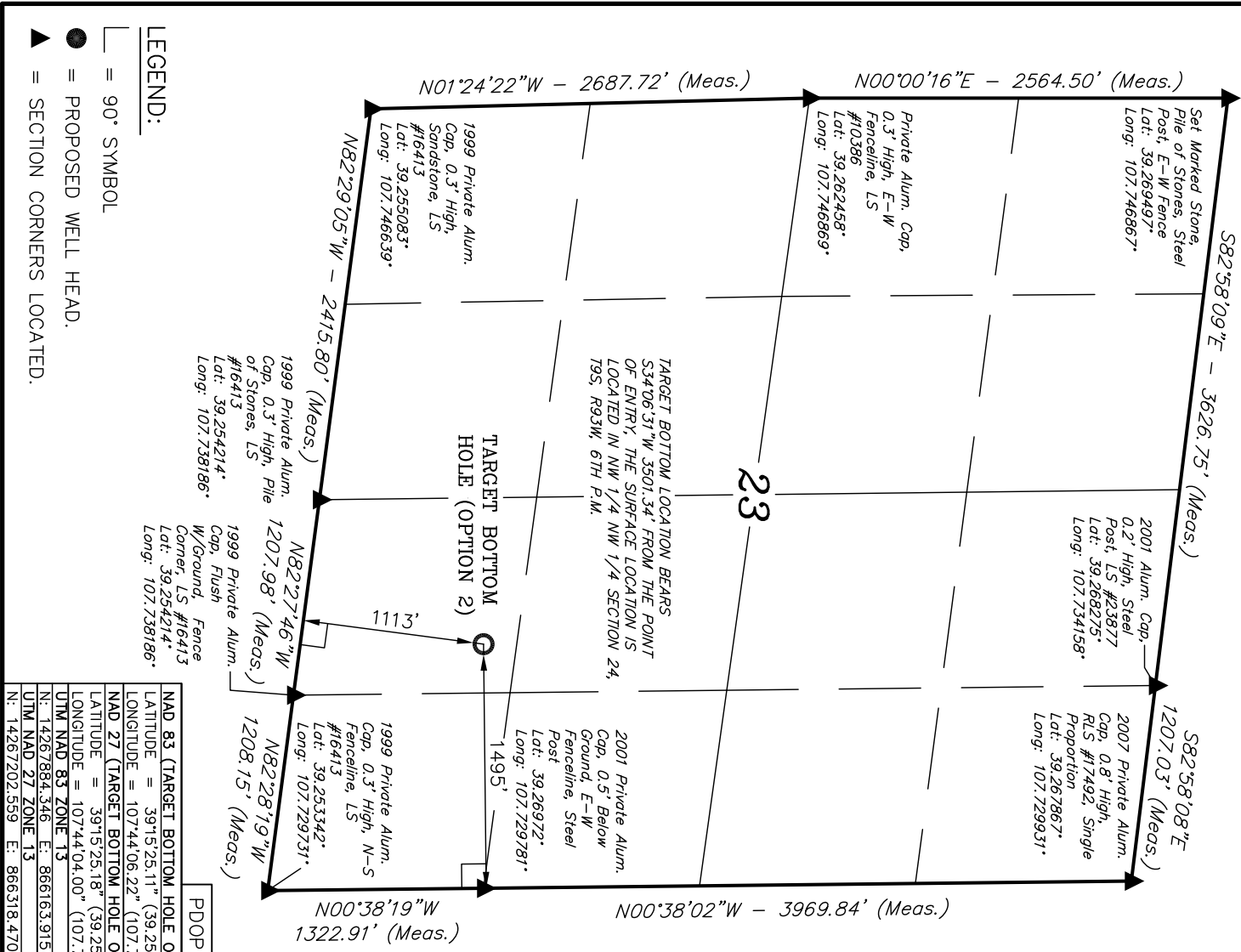
Well location, N Vega #24-14H (TARGET BOTTOM HOLE OPTION 2), located as shown in the SW 1/4 SE 1/4 of Section 23, T9S, R93W, 6th P.M., Mesa County, Colorado.

BASIS OF ELEVATION

BENCH MARK (19 RDS) LOCATED IN THE SE 1/4 OF SECTION 16, T9S, R93W, 6th P.M. TAKEN FROM THE SOUTH MAMM PEAK QUADRANGLE, COLORADO, 7.5 MINUTE SERIES (TOPOGRAPHICAL MAP) PUBLISHED BY THE UNITED STATES DEPARTMENT OF THE INTERIOR, GEOLOGICAL SURVEY. SAID ELEVATION IS MARKED AS BEING 7252 FEET.

BASIS OF BEARINGS

BASIS OF BEARINGS IS A G.P.S. OBSERVATION.

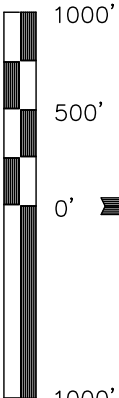


UNTAH ENGINEERING & LAND SURVEYING			
85 SOUTH 200 EAST - VERNAL, UTAH 84078			
(435) 789-1017			
SCALE	1" = 1000'	DATE SURVEYED:	DATE DRAWN:
PARTY	B.H. C.G. M.D.	REFERENCES	G.L.O. PLAT
WEATHER	WARM	FILE	DELTA PETROLEUM CORP.

THIS IS TO CERTIFY THAT THE ABOVE PLAT WAS PREPARED FROM FIELD NOTES OF ACTUAL SURVEYS MADE BY ME OR UNDER MY SUPERVISION AND THAT THE SAME ARE TRUE AND CORRECT TO THE BEST OF MY KNOWLEDGE AND BELIEF.

REGISTERED LAND SURVEYOR
REGISTRATION NO. 17492
STATE OF COLORADO

CERTIFICATE



LEGEND:

- = 90° SYMBOL
- = PROPOSED WELL HEAD.
- ▲ = SECTION CORNERS LOCATED.