

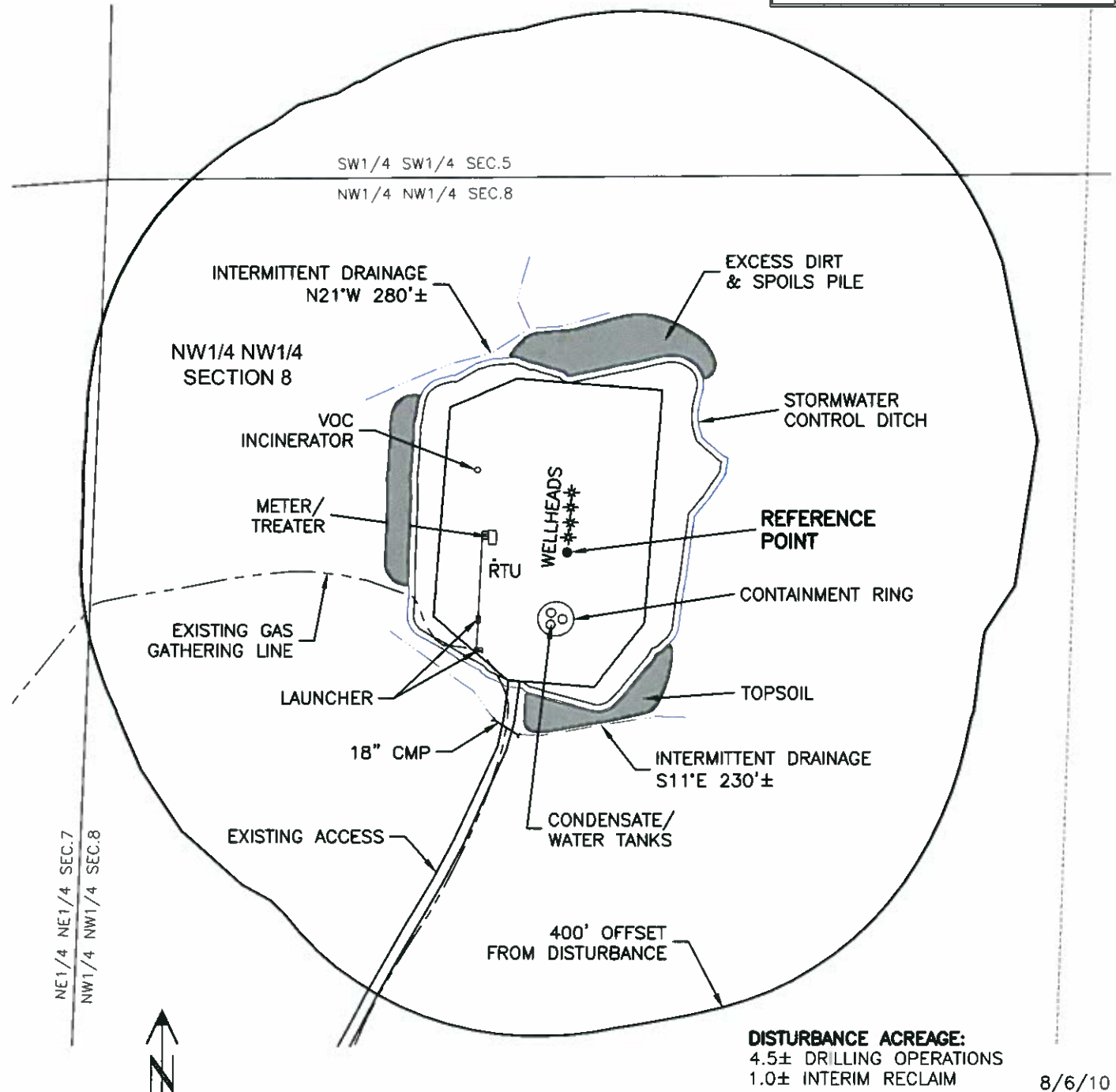
LOCATION DRAWING

VEGETATION
SAGEBRUSH
OAKBRUSH
MOUNTAIN SHRUBS
GRASSES
SCATTERED JUIPTER

SURFACE USE
GRAZING
PASTURE

REFERENCE POINT

LATITUDE: 39.210320
LONGITUDE: -107.912864
FOOTAGE: 498 FNL 629 FWL
GROUND ELEVATION: 6857.5
PDOP: 3.3 DATE: 6/24/2010
INSTRUMENT OPERATOR: DJM



DISTURBANCE ACREAGE:
4.5± DRILLING OPERATIONS
1.0± INTERIM RECLAIM

8/6/10



0 200 400
Graphic Scale in Feet
1 inch = 200 feet



LAND SURVEYING AND MAPPING
LAFAYETTE - WINTER PARK
Ph 303 666 0379 Fx 303 665 6320

OXY USA, INC
MY WAY RANCH 8-4 PAD

NW1/4 NW1/4 SECTION 8
T10S R94W 6th PM
MESA COUNTY COLORADO