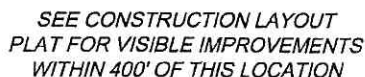


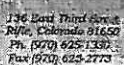
T. 6 S.



I, MICHAEL J. LANGHORNE, A REGISTERED LAND SURVEYOR IN THE STATE OF COLORADO DO HEREBY CERTIFY THAT THE SURVEY SHOWN HEREON WAS PREPARED UNDER MY DIRECT SUPERVISION AND HAS BEEN STAKED ON THE GROUND AS SHOWN ON THE PLAT AND CHECKING THAT THIS MAP IS A TRUE REPRESENTATION THEREOF.

MICHAEL J. LANGHORNE, COLORADO REGISTRATION NO. 36572  
FOR AND ON BEHALF OF  
BOOKCLIFF SURVEY SERVICES, INC.

1) DEPENDENT RESURVEY AND SURVEY OF TRACT 38, T. 7 S., R. 95  
W., 6th P.M (GLO PLAT)  
2) U.S.G.S. QUAD: RIFLE, CO



**BOOKCLIFF**  
*Survey Services, Inc.*

SURVEY DATE: 1/13/10  
MAP DATE: 6/9/10  
SCALE: 1" = 1000'  
PLAT: 1 of 1  
PROJECT: Williams

FIELD LOCATED SECTION  
MONUMENTS AS DESCRIBEDFIELD SURVEYED  
WELL LOCATION

### CALCULATED BOTTOM HOLE LOCATION

### CALCULATED SECTION CORNER LOCATION

- 1) ELEVATIONS BASED ON N.A.V.D. 1988 PUBLISHED COORDINATES.
- 2) LATITUDES AND LONGITUDES ARE BASE ON NAD 83, PUBLISHED COORDINATES
- 3) STATE PLANE COORDINATES ARE BASED ON COLORADO CENTRAL ZONE, U.S. SURVEY FEET.
- 4) ELEVATION MASK SET TO 15"
- 5) GPS OPERATOR J. KIRKPATRICK, OBSERVED A PDOP 2.203 ON SURVEY POINT NUMBER 11182.
- 6) SURFACE AND BOTTOM HOLE LOCATIONS ARE MEASURED 90° FROM SECTION LINES.

WELL LOCATION PLAT Prepared for:

**Williams.** Williams Production, RMT

NE1/4 SE1/4, SECTION 23  
T. 6 S., R. 94 W. of the 6th. P.M.  
GARFIELD COUNTY, COLORADO