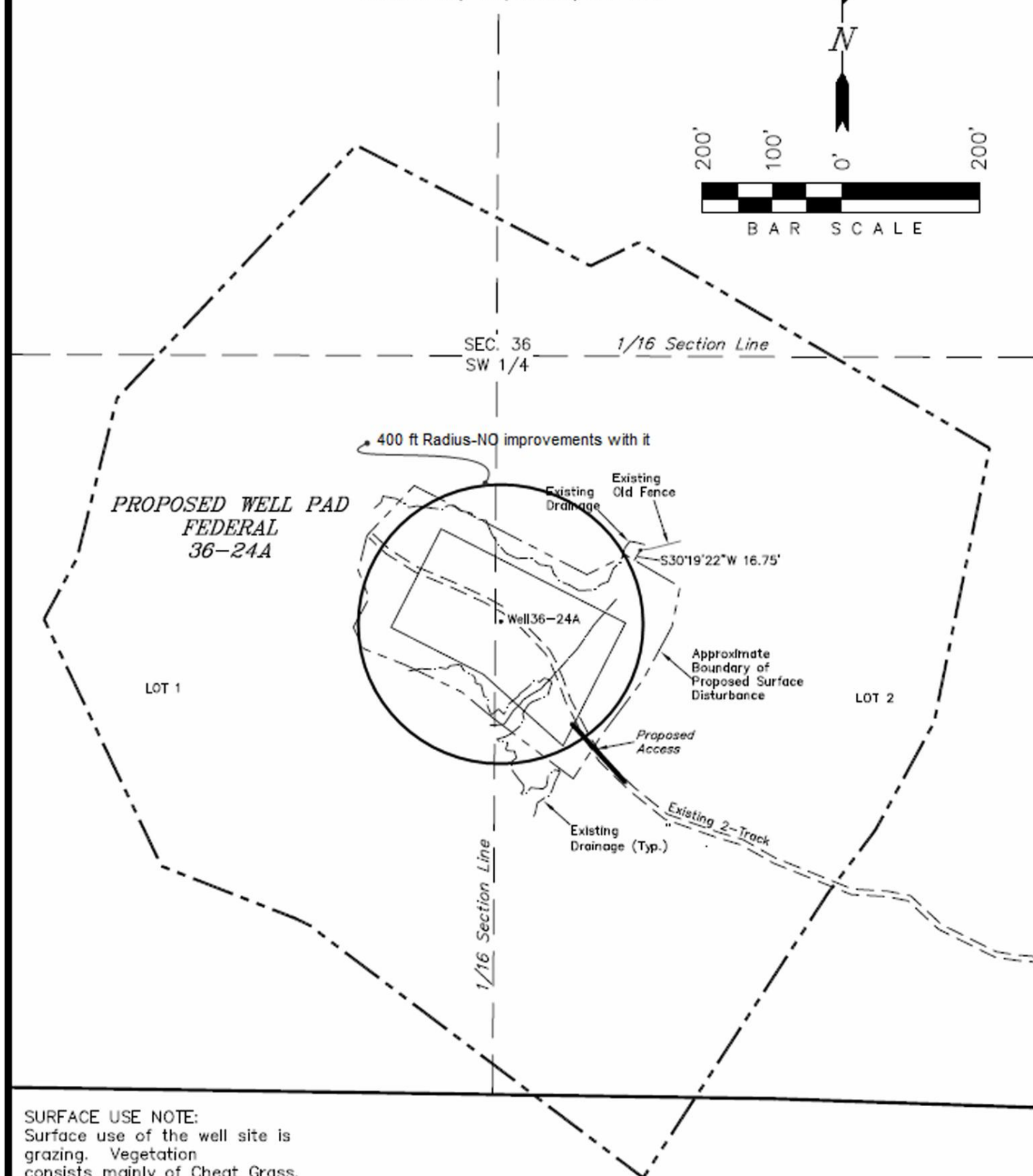
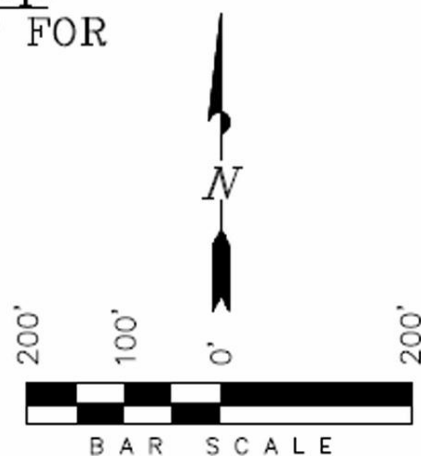


Dejour Energy (USA) Corp.
ADDENDUM TO LEGAL PLAT FOR
WELL PAD
FEDERAL 36-24A
Section 36, T1N, R103W, 6th P.M.



SURFACE USE NOTE:
 Surface use of the well site is
 grazing. Vegetation
 consists mainly of Cheat Grass,
 Sagebrush & Grease Wood.

SURVEYED BY: C.D.S.	SURVEY DATE: 12-10-09
DRAWN BY: L.C.S.	DATE DRAWN: 12-30-09
SCALE: 1" = 200'	REVISED:

Tri State
Land Surveying, Inc.
 180 NORTH VERNAL AVE. VERNAL, UTAH 84078

(435) 781-2501

**SHEET
1b**