

BILL BARRETT CORPORATION E-BILL  
DO NOT MAIL-1099 18TH ST,STE 2300W  
DENVER, Colorado

Werner 41C-26-692

PROPETRO

## **Post Job Summary**

### **Cement Surface Casing**

Prepared for: JODI SOUTH  
Date Prepared: 7/17/10  
Version: 1

Service Supervisor: JAMISON, PRICE

Submitted by:

**HALLIBURTON**

### The Road to Excellence Starts with Safety

<b>Sold To #:</b> 343492		<b>Ship To #:</b> 2794479		<b>Quote #:</b>		<b>Sales Order #:</b> 7504351	
<b>Customer:</b> BILL BARRETT CORPORATION E-BILL				<b>Customer Rep:</b> South, Jodi			
<b>Well Name:</b> Werner			<b>Well #:</b> 41C-26-692			<b>API/UWI #:</b> 05-045-19241	
<b>Field:</b> MAMM CREEK		<b>City (SAP):</b> SILT		<b>County/Parish:</b> Garfield			<b>State:</b> Colorado
<b>Lat:</b> N 39.508 deg. OR N 39 deg. 30 min. 27.025 secs.				<b>Long:</b> W 107.63 deg. OR W -108 deg. 22 min. 11.219 secs.			
<b>Contractor:</b> PROPETRO			<b>Rig/Platform Name/Num:</b> PROPETRO 1				
<b>Job Purpose:</b> Cement Surface Casing							
<b>Well Type:</b> Development Well			<b>Job Type:</b> Cement Surface Casing				
<b>Sales Person:</b> METLI, MARSHALL			<b>Srvc Supervisor:</b> JAMISON, PRICE			<b>MBU ID Emp #:</b> 229155	

### Job Personnel

HES Emp Name	Exp Hrs	Emp #	HES Emp Name	Exp Hrs	Emp #	HES Emp Name	Exp Hrs	Emp #
HAYES, JESSE Doug	2.5	403601	JAMISON, PRICE W	2.5	229155	JENSEN, SHANE Lynn	2.5	441759
STILLSON, ERIC W	2.5	393789						

### Equipment

HES Unit #	Distance-1 way	HES Unit #	Distance-1 way	HES Unit #	Distance-1 way	HES Unit #	Distance-1 way
10616651C	120 mile	10995025	120 mile	11021972	120 mile	11027039	120 mile
11259881	120 mile						

### Job Hours

Date	On Location Hours	Operating Hours	Date	On Location Hours	Operating Hours	Date	On Location Hours	Operating Hours
7/17/10	2.5	1						

<b>TOTAL</b>	Total is the sum of each column separately							
--------------	--	--	--	--	--	--	--	--

### Job

Formation Name				Date	Time	Time Zone
Formation Depth (MD)	Top	Bottom		Called Out	17 - Jul - 2010	20:30 MST
Form Type	BHST			On Location	17 - Jul - 2010	21:30 MST
Job depth MD	804.9 ft			Job Started	17 - Jul - 2010	23:15 MST
Water Depth	Wk Ht Above Floor			Job Completed	17 - Jul - 2010	23:57 MST
Perforation Depth (MD)	From	To		Departed Loc	17 - Jul - 2010	00:00 MST

### Well Data

Description	New / Used	Max pressure psig	Size in	ID in	Weight lbm/ft	Thread	Grade	Top MD ft	Bottom MD ft	Top TVD ft	Bottom TVD ft
OPEN HOLE				12.25				.	820.	.	820.
SURFACE CASING	Unknown		9.625	8.921	36.		J-55	.	804.9	.	804.9

### Sales/Rental/3<sup>rd</sup> Party (HES)

Description	Qty	Qty uom	Depth	Supplier
PLUG,CMTG,TOP,9 5/8,HWE,8.16 MIN/9.06 MA	1	EA		
ADC (AUTO DENSITY CTRL) SYS, /JOB,ZI	1	JOB		
R/A DENSOMETER W/CHART RECORDER,/JOB,ZI	1	JOB		
PORT. DAS W/CEMWIN;ACQUIRE W/HES, ZI	1	JOB		

### Tools and Accessories

Type	Size	Qty	Make	Depth	Type	Size	Qty	Make	Depth	Type	Size	Qty	Make
Guide Shoe					Packer					Top Plug			
Float Shoe					Bridge Plug					Bottom Plug			
Float Collar					Retainer					SSR plug set			
Insert Float										Plug Container			
Stage Tool										Centralizers			

### Miscellaneous Materials

Gelling Agt	Conc	Surfactant	Conc	Acid Type	Qty	Conc	%
Treatment Fld	Conc	Inhibitor	Conc	Sand Type	Size	Qty	

Fluid Data									
Stage/Plug #: 1									
Fluid #	Stage Type	Fluid Name	Qty	Qty uom	Mixing Density lbm/gal	Yield ft <sup>3</sup> /sk	Mix Fluid Gal/sk	Rate bbl/min	Total Mix Fluid Gal/sk
1	WATER SPACER		20.00	bbl	8.33	.0	.0	6.0	
2	LEAD CEMENT	VERSACEM (TM) SYSTEM (452010)	120.0	sacks	12.3	2.38	13.75	6.0	13.75
	13.75 Gal	FRESH WATER							
3	TAIL CEMENT	SWIFTCES (TM) SYSTEM (452990)	120.0	sacks	14.2	1.43	6.88	6.0	6.72
	6.715 Gal	FRESH WATER							
4	DISPLACEMENT		58.00	bbl	8.33	.0	.0	6.0	
Calculated Values		Pressures		Volumes					
Displacement	57.8	Shut In: Instant		Lost Returns	NO	Cement Slurry	81.3	Pad	
Top Of Cement	SURFACE	5 Min		Cement Returns	27	Actual Displacement	57.8	Treatment	
Frac Gradient		15 Min		Spacers	20	Load and Breakdown		Total Job	160
Rates									
Circulating	6	Mixing	6	Displacement	6	Avg. Job	6		
Cement Left In Pipe	Amount	45.8 ft	Reason	Shoe Joint					
Frac Ring # 1 @	ID	Frac ring # 2 @	ID	Frac Ring # 3 @	ID	Frac Ring # 4 @	ID		
The Information Stated Herein Is Correct				Customer Representative Signature					

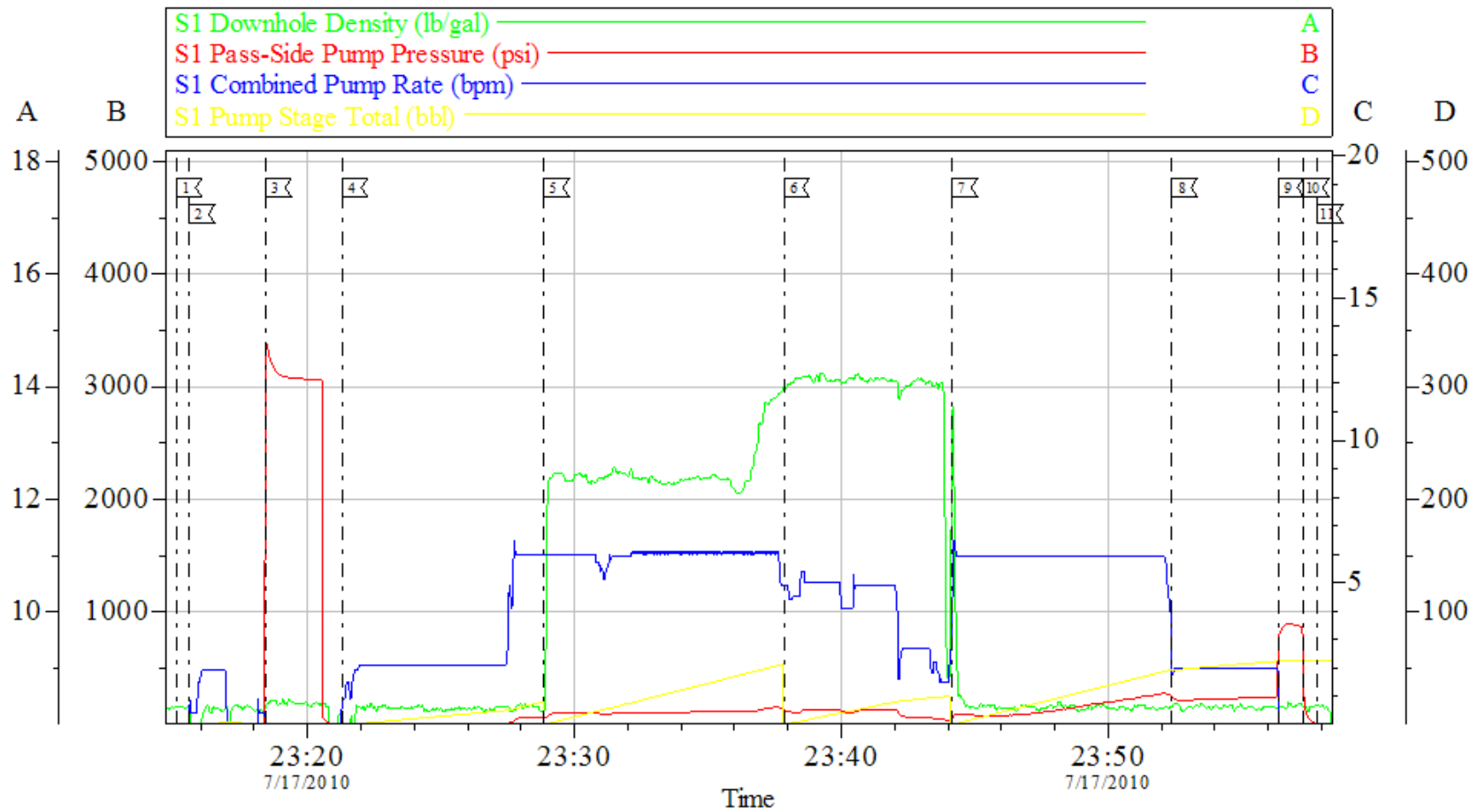
*The Road to Excellence Starts with Safety*

Sold To #: 343492		Ship To #: 2794479		Quote #:		Sales Order #: 7504351	
Customer: BILL BARRETT CORPORATION E-BILL				Customer Rep: South, Jodi			
Well Name: Werner			Well #: 41C-26-692			API/UWI #: 05-045-19241	
Field: MAMM CREEK		City (SAP): SILT		County/Parish: Garfield			State: Colorado
Legal Description:							
Lat: N 39.508 deg. OR N 39 deg. 30 min. 27.025 secs.				Long: W 107.63 deg. OR W -108 deg. 22 min. 11.219 secs.			
Contractor: PROPETRO			Rig/Platform Name/Num: PROPETRO 1				
Job Purpose: Cement Surface Casing						Ticket Amount:	
Well Type: Development Well			Job Type: Cement Surface Casing				
Sales Person: METLI, MARSHALL			Srvc Supervisor: JAMISON, PRICE			MBU ID Emp #: 229155	

Activity Description	Date/Time	Cht #	Rate bbl/min	Volume bbl		Pressure psig		Comments
				Stage	Total	Tubing	Casing	
Call Out	07/17/2010 20:30							TD 820 HOLE SIZE 12.25 CASING 9 5/6 36 # GRADE J-55 TP 804.9 SHOE JOINT 45.8 NO MUD WELL WAS AIR MIST DRILLED
Depart Location for Service Center or Other Site	07/17/2010 20:35							
Arrive At Loc	07/17/2010 21:20							
Assessment Of Location Safety Meeting	07/17/2010 21:30							
Pre-Rig Up Safety Meeting	07/17/2010 21:35							
Pre-Job Safety Meeting	07/17/2010 23:00							
Start Job	07/17/2010 23:15							
Prime Pumps	07/17/2010 23:15		2	2			.0	FRESH WATER
Test Lines	07/17/2010 23:18						2000.0	
Pump Water	07/17/2010 23:21		6	20			66.0	FRESH WATER
Pump Lead Cement	07/17/2010 23:28		6	50.7			115.0	MIXED @ 12.3 YIELD 2.38 WAT/REQ 13.77 120 SKS
Pump Tail Cement	07/17/2010 23:37		6	30.6			130.0	MIXED @ 14.2 YIELD 1.43 WAT/REQ 6.85 120 SKS
Drop Plug	07/17/2010 23:44							
Pump Displacement	07/17/2010 23:44		6					FRESH WATER

Activity Description	Date/Time	Cht #	Rate bbl/ min	Volume bbl		Pressure psig		Comments
				Stage	Total	Tubing	Casing	
Slow Rate	07/17/2010 23:52		2	48			278.0	GOT CIRCULATION 15 BBLS AWAY ON TAIL CEMENT
Bump Plug	07/17/2010 23:56		2	58.7			240.0	PRESSURED UP TO 850 PSI
Check Floats	07/17/2010 23:57							FLOATS HELD
End Job	07/17/2010 23:57							CEMENT BACK TO SURFACE 27 BBLS
Standby Rig	07/17/2010 23:59							WAITING ON NEXT WELL

# **BILL BARRETT** **9 5/8 SURFACE CASING**



Local Event Log					
1 START JOB	23:15:06	2 PRIME LINES	23:15:35	3 TEST LINES	23:18:27
4 START FRESH WATER SPACER	23:21:18	5 START LEAD CEMENT	23:28:52	6 START TAIL CEMENT	23:37:51
7 DROP PLUG / PUMP DISPLACEMENT	23:44:09	8 SLOW RATE	23:52:24	9 BUMP PLUG	23:56:23
10 CHECK FLOATS	23:57:19	11 END JOB	23:57:51		

Customer: BILL BARRETT	Job Date: 17-Jul-2010	Sales Order #: 7504351
Well Description: WERNER 41C-26-692	Job Type: CEMENT	ADC Used: YES
Company Rep: JODI SOUTH	Cement Supervisor: BILL JAMISON	Elite #: 4 JESSE HAYES

**HALLIBURTON**  
 OptiCem v6.3.4  
 18-Jul-10 00:03