

BILL BARRETT CORPORATION E-BILL
DO NOT MAIL-1099 18TH ST,STE 2300W
DENVER, Colorado

Werner 33C-23-692

PROPETRO 1

Post Job Summary **Cement Surface Casing**

Prepared for: JODI SOUTH
Date Prepared: 7/20/10
Version: 1

Service Supervisor: JAMISON, PRICE

Submitted by:

HALLIBURTON

The Road to Excellence Starts with Safety

The Road to Excellence Starts With Safety

Sold To #: 343492	Ship To #: 2794477	Quote #:	Sales Order #: 7504886
Customer: BILL BARRETT CORPORATION E-BILL		Customer Rep: South, Jody	
Well Name: Werner		Well #: 33C-23-692	API/UWI #: 05-045-19243
Field: MAMM CREEK	City (SAP): Silt	County/Parish: Garfield	State: Colorado
Lat: N 39.508 deg. OR N 39 deg. 30 min. 28.13 secs.		Long: W 107.63 deg. OR W -108 deg. 22 min. 11.078 secs.	
Contractor: PROPETRO		Rig/Platform Name/Num: PROPETRO 1	
Job Purpose: Cement Surface Casing			
Well Type: Development Well		Job Type: Cement Surface Casing	
Sales Person: METLI, MARSHALL		Srvc Supervisor: JAMISON, PRICE	MBU ID Emp #: 229155

Job Personnel

HES Emp Name	Exp Hrs	Emp #	HES Emp Name	Exp Hrs	Emp #	HES Emp Name	Exp Hrs	Emp #
HAYES, JESSE Doug	6.5	403601	JAMISON, PRICE W	6.5	229155	JENSEN, SHANE Lynn	6.5	441759

Equipment

HES Unit #	Distance-1 way	HES Unit #	Distance-1 way	HES Unit #	Distance-1 way	HES Unit #	Distance-1 way
10616651C	120 mile	10867425	120 mile	10897891	120 mile	10995025	120 mile
11259881	120 mile						

Job Hours

Date	On Location Hours	Operating Hours	Date	On Location Hours	Operating Hours	Date	On Location Hours	Operating Hours
7/20	6.5	1						

TOTAL	Total is the sum of each column separately							
--------------	--	--	--	--	--	--	--	--

Job

Formation Name					Date	Time	Time Zone
Formation Depth (MD)	Top	Bottom			Called Out	20 - Jul - 2010	07:00 MST
Form Type	BHST				On Location	20 - Jul - 2010	09:30 MST
Job depth MD	804.7 ft		Job Depth TVD	820. ft	Job Started	20 - Jul - 2010	14:25 MST
Water Depth			Wk Ht Above Floor	1. ft	Job Completed	20 - Jul - 2010	15:10 MST
Perforation Depth (MD)	From	To			Departed Loc	20 - Jul - 2010	16:00 MST

Well Data

Description	New / Used	Max pressure psig	Size in	ID in	Weight lbm/ft	Thread	Grade	Top MD ft	Bottom MD ft	Top TVD ft	Bottom TVD ft
OPEN HOLE				12.25				.	820.	.	820.
SURFACE CASING	Unknown		9.625	8.921	36.		J-55	.	804.7	.	804.7

Sales/Rental/3rd Party (HES)

Description	Qty	Qty uom	Depth	Supplier
PLUG,CMTG,TOP,9 5/8,HWE,8.16 MIN/9.06 MA	1	EA		
ADC (AUTO DENSITY CTRL) SYS, /JOB,ZI	1	JOB		
R/A DENSOMETER W/CHART RECORDER,/JOB,ZI	1	JOB		
PORT. DAS W/CEMWIN;ACQUIRE W/HES, ZI	1	JOB		

Tools and Accessories

Type	Size	Qty	Make	Depth	Type	Size	Qty	Make	Depth	Type	Size	Qty	Make
Guide Shoe					Packer					Top Plug			
Float Shoe					Bridge Plug					Bottom Plug			
Float Collar					Retainer					SSR plug set			
Insert Float										Plug Container			
Stage Tool										Centralizers			

Miscellaneous Materials

Gelling Agt	Conc	Surfactant	Conc	Acid Type	Qty	Conc	%
Treatment Fld	Conc	Inhibitor	Conc	Sand Type	Size	Qty	

Fluid Data										
Stage/Plug #: 1										
Fluid #	Stage Type	Fluid Name	Qty	Qty uom	Mixing Density lbm/gal	Yield ft ³ /sk	Mix Fluid Gal/sk	Rate bbl/min	Total Mix Fluid Gal/sk	
1	WATER SPACER		20.00	bbl	8.33	.0	.0	6.0		
2	LEAD CEMENT	VERSACEM (TM) SYSTEM (452010)	120.0	sacks	12.3	2.38	13.75	6.0	13.75	
		13.75 Gal FRESH WATER								
3	TAIL CEMENT	SWIFTCES (TM) SYSTEM (452990)	120.0	sacks	14.2	1.43	6.88	6.0	6.72	
		6.715 Gal FRESH WATER								
4	DISPLACEMENT		59.00	bbl	8.44	.0	.0	6.0		
Calculated Values		Pressures		Volumes						
Displacement	58.6	Shut In: Instant		Lost Returns	NO	Cement Slurry	81.3	Pad		
Top Of Cement	SURFACE	5 Min		Cement Returns	23	Actual Displacement	58.6	Treatment		
Frac Gradient		15 Min		Spacers	20	Load and Breakdown		Total Job	160	
Rates										
Circulating		Mixing	6	Displacement	6	Avg. Job	6			
Cement Left In Pipe	Amount	46 ft	Reason	Shoe Joint						
Frac Ring # 1 @	ID	Frac ring # 2 @	ID	Frac Ring # 3 @	ID	Frac Ring # 4 @	ID			
The Information Stated Herein Is Correct				Customer Representative Signature						

The Road to Excellence Starts with Safety

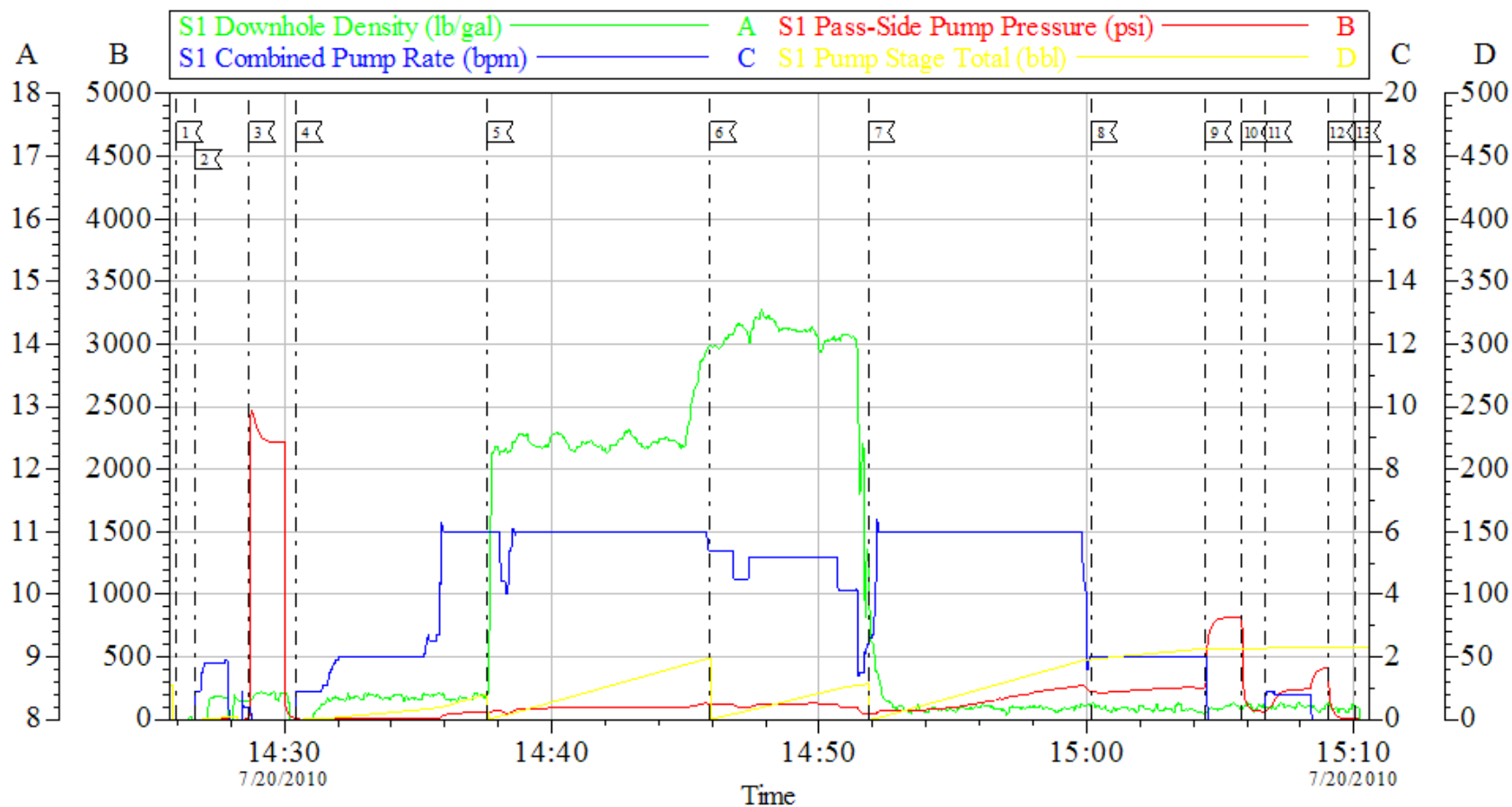
Sold To #: 343492	Ship To #: 2794477	Quote #:	Sales Order #: 7504886
Customer: BILL BARRETT CORPORATION E-BILL		Customer Rep: South, Jody	
Well Name: Werner	Well #: 33C-23-692	API/UWI #: 05-045-19243	
Field: MAMM CREEK	City (SAP): Silt	County/Parish: Garfield	State: Colorado
Legal Description:			
Lat: N 39.508 deg. OR N 39 deg. 30 min. 28.13 secs.		Long: W 107.63 deg. OR W -108 deg. 22 min. 11.078 secs.	
Contractor: PROPETRO		Rig/Platform Name/Num: PROPETRO 1	
Job Purpose: Cement Surface Casing			Ticket Amount:
Well Type: Development Well		Job Type: Cement Surface Casing	
Sales Person: METLI, MARSHALL		Srv Supervisor: JAMISON, PRICE	MBU ID Emp #: 229155

Activity Description	Date/Time	Cht #	Rate bbl/ min	Volume bbl		Pressure psig		Comments
				Stage	Total	Tubing	Casing	
Call Out	07/20/2010 06:30							TD 820 HOLE SIZE 12.25 TP 804.7 SHOE JOINT 46 CASING 9.625 GRADE J-55 NO MUD WELL WAS AIR MIST DRILLED
Depart Yard Safety Meeting	07/20/2010 06:50							
Crew Leave Yard	07/20/2010 07:00							
Arrive At Loc	07/20/2010 09:30							
Assessment Of Location Safety Meeting	07/20/2010 09:40							
Pre-Rig Up Safety Meeting	07/20/2010 13:30							
Pre-Job Safety Meeting	07/20/2010 14:10							
Pre-Job Safety Meeting	07/20/2010 14:15							
Start Job	07/20/2010 14:25							
Prime Pumps	07/20/2010 14:26		2	2			5.0	FRESH WATER
Test Lines	07/20/2010 14:28						2000. 0	
Pump Water	07/20/2010 14:30		6	20			55.0	FRESH WATER
Pump Lead Cement	07/20/2010 14:37		6	50.9			92.0	MIXED @ 12.3 PPG YIELD 2.38 WAT/REQ 13.77 120 SKS
Pump Tail Cement	07/20/2010 14:45		6	30.6			235.0	MIXED @ 14.2 PPG YIELD 1.43 WAT/REQ 6.85 120 SKS

Activity Description	Date/Time	Cht #	Rate bbl/min	Volume bbl		Pressure psig		Comments
				Stage	Total	Tubing	Casing	
Drop Plug	07/20/2010 14:51							GOT RETURNS @ 23 BBLS AWAY ON TAIL
Pump Displacement	07/20/2010 14:51		6					FRESH WATER
Slow Rate	07/20/2010 15:00		2	48			276.0	
Bump Plug	07/20/2010 15:04		2	58.6			276.0	PRESSURED UP TO 814 PSI
Check Floats	07/20/2010 15:05							FLOATS DID NOT HOLD
Bump Plug	07/20/2010 15:06		1	1			300.0	CEMENT BACK TO SURFACE 23 BBLS
Shut In Well	07/20/2010 15:09							CASING WAS NOT MOVED THROUGHOUT JOB
End Job	07/20/2010 15:10							
Post-Job Safety Meeting (Pre Rig-Down)	07/20/2010 15:20							
Depart Location Safety Meeting	07/20/2010 15:50							
Crew Leave Location	07/20/2010 16:00							THANKS FOR USING HALLIBURTON BILL JAMISON & CREW

BILL BARRETT

9.625 SURFACE CASING



Local Event Log

1 START JOB	14:25:58	2 PRIME LINES	14:26:40	3 TEST LINES	14:28:40
4 START FRESH WATER SPACER	14:30:26	5 START LEAD CEMENT	14:37:36	6 START LEAD CEMENT	14:45:55
7 DROP PLUG / START DISPLACEMENT	14:51:51	8 SLOW RATE	15:00:10	9 BUMP PLUG	15:04:27
10 CHECK FLOATS	15:05:48	11 BUMP PLUG	15:06:41	12 SHUT IN WELL	15:09:01
13 END JOB	15:10:01				

Customer: BILL BARRETT
Well Description: WERNER 33C-23-692
Company Rep: JODI SOUTH

Job Date: 20-Jul-2010
Job Type: CEMENT
Cement Supervisor: BILL JAMISON

Sales Order #: 7504886
ADC Used: YES
Elite #: 4 JESSE HAYES

HALLIBURTON
OptiCem v6.3.4
20-Jul-10 15:18