

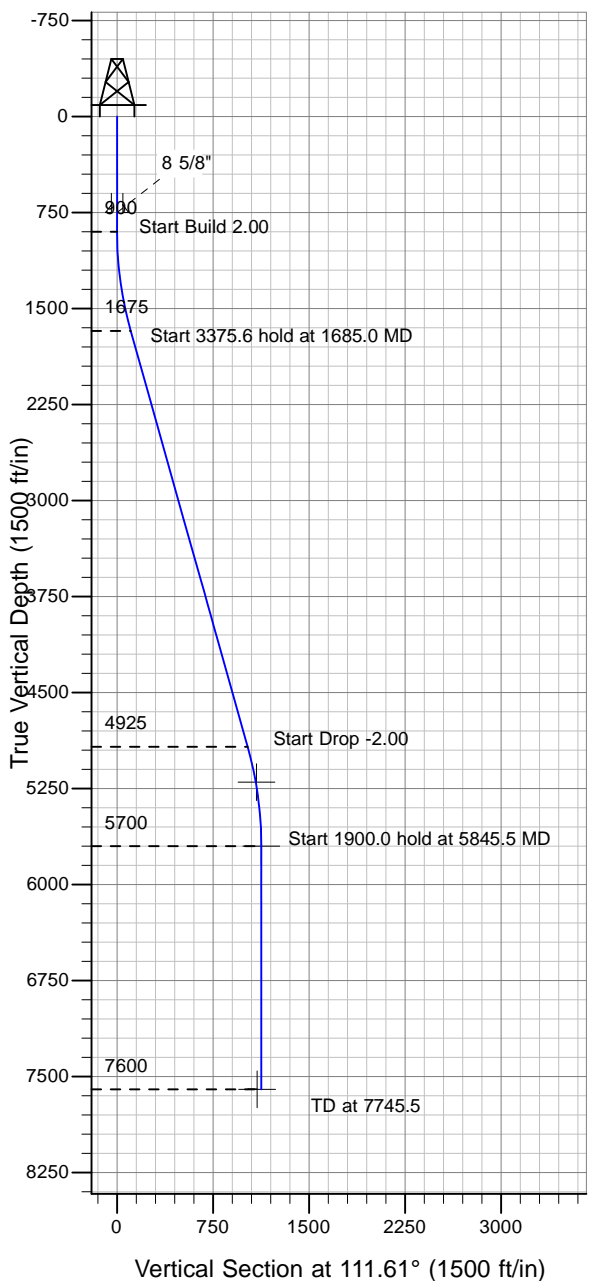
ENSIGN

Directional

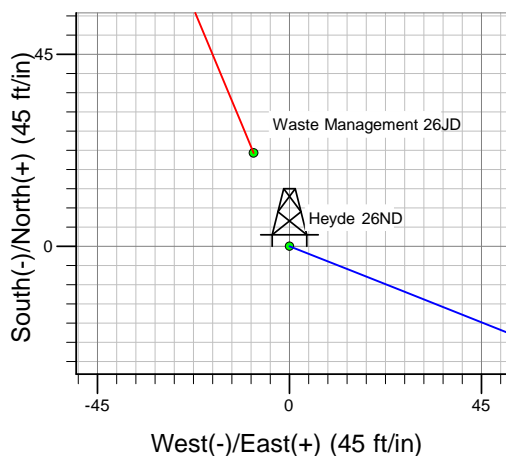
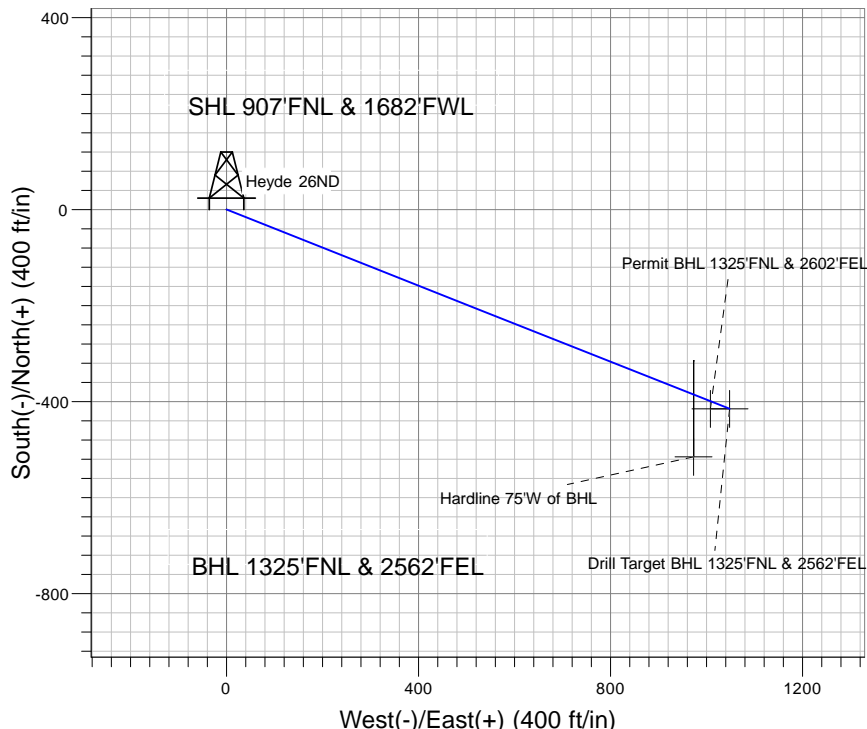
Well Name: Heyde 26ND

Surface Location: Heyde 26ND Pad Sec. 26-T3N-R64W
 North American Datum 1983 , US State Plane 1983 , Colorado Northern Zone
 Ground Elevation: 4840.0

+N/-S+E/-W Northing Easting Latitude Longitude Slot
 0.0 0.0 1317627.80 3273173.73 40° 12' 4.140 N 104° 31' 19.236 W
 Original Well Elev WELL @ 4853.0ft (Original Well Elev)



PETROLEUM DEVELOPMENT CORP Weld County CO



Heyde 26ND Pad Sec. 26-T3N-R64W
 Heyde 26ND
 Plan #1 (7-22-10)
 17:29, August 05 2010



Azimuths to True North
 Magnetic North: 8.84°

Magnetic Field
 Strength: 53148.0snT
 Dip Angle: 66.96°
 Date: 7/22/2010
 Model: IGRF2010

WELLBORE TARGET DETAILS (LAT/LONG)

Name	TVD	+N/-S	+E/-W	Latitude	Longitude	Shape
Permit BHL 1325'FNL & 2602'FEL	5200.0	-415.1	1007.9	40° 12' 0.038 N	104° 31' 6.247 W	Point
Drill Target BHL 1325'FNL & 2562'FEL	5700.0	-415.1	1047.9	40° 12' 0.037 N	104° 31' 5.731 W	Point
Hardline 75'W of BHL	7600.0	-515.1	972.9	40° 11' 59.049 N	104° 31' 6.698 W	Polygon

SECTION DETAILS

Sec	MD	Inc	Azi	TVD	+N/-S	+E/-W	DLeg	TFace	VSec	Target
1	0.0	0.00	0.00	0.0	0.0	0.0	0.00	0.00	0.0	
2	900.0	0.00	0.00	900.0	0.0	0.0	0.00	0.00	0.0	
3	1685.0	15.70	111.61	1675.2	-39.4	99.4	2.00	111.61	106.9	
4	5060.5	15.70	111.61	4924.8	-375.8	948.5	0.00	0.00	1020.3	
5	5845.5	0.00	0.00	5700.0	-415.1	1047.9	2.00	180.00	1127.1	Drill Target BHL 1325'FNL & 2562'FEL
6	7745.5	0.00	0.00	7600.0	-415.1	1047.9	0.00	0.00	1127.1	