

BILL BARRETT CORPORATION E-BILL  
DO NOT MAIL-1099 18TH ST,STE 2300W  
DENVER, Colorado

Werner 34C-23-692

PROPETRO 1

## **Post Job Summary**

### **Cement Surface Casing**

Prepared for: JODI SOUTH  
Date Prepared:  
Version: 1

Service Supervisor: JAMISON, PRICE

Submitted by:

**HALLIBURTON**

## The Road to Excellence Starts with Safety

The Road to Excellence Starts With Safety

<b>Sold To #:</b> 343492	<b>Ship To #:</b> 2794474	<b>Quote #:</b>	<b>Sales Order #:</b> 7506102
<b>Customer:</b> BILL BARRETT CORPORATION E-BILL		<b>Customer Rep:</b> South, Jodi	
<b>Well Name:</b> Werner		<b>Well #:</b> 34C-23-692	<b>API/UWI #:</b> 05-045-19242
<b>Field:</b> MAMM CREEK	<b>City (SAP):</b> Silt	<b>County/Parish:</b> Garfield	<b>State:</b> Colorado
<b>Lat:</b> N 39.508 deg. OR N 39 deg. 30 min. 27.659 secs.		<b>Long:</b> W 107.63 deg. OR W -108 deg. 22 min. 11.086 secs.	
<b>Contractor:</b> PROPETRO		<b>Rig/Platform Name/Num:</b> PROPETRO 1	
<b>Job Purpose:</b> Cement Surface Casing			
<b>Well Type:</b> Development Well		<b>Job Type:</b> Cement Surface Casing	
<b>Sales Person:</b> METLI, MARSHALL		<b>Srvc Supervisor:</b> JAMISON, PRICE	<b>MBU ID Emp #:</b> 229155

### Job Personnel

HES Emp Name	Exp Hrs	Emp #	HES Emp Name	Exp Hrs	Emp #	HES Emp Name	Exp Hrs	Emp #
HAYES, JESSE Doug		403601	JAMISON, PRICE W		229155	JENSEN, SHANE Lynn		441759

### Equipment

HES Unit #	Distance-1 way	HES Unit #	Distance-1 way	HES Unit #	Distance-1 way	HES Unit #	Distance-1 way
10297346	120 mile	10616651C	120 mile	10995025	120 mile	11071559	120 mile
11259881	120 mile						

### Job Hours

Date	On Location Hours	Operating Hours	Date	On Location Hours	Operating Hours	Date	On Location Hours	Operating Hours
7/22/10	8	1						

<b>TOTAL</b>	Total is the sum of each column separately							
--------------	--	--	--	--	--	--	--	--

### Job

Formation Name					Date	Time	Time Zone
<b>Formation Depth (MD)</b>	<b>Top</b>		<b>Bottom</b>		<b>Called Out</b>	22 - Jul - 2010	07:30 MST
<b>Form Type</b>	BHST				<b>On Location</b>	22 - Jul - 2010	10:00 MST
<b>Job depth MD</b>	805.3 ft		<b>Job Depth TVD</b>	825. ft	<b>Job Started</b>	22 - Jul - 2010	16:15 MST
<b>Water Depth</b>			<b>Wk Ht Above Floor</b>	1. ft	<b>Job Completed</b>	22 - Jul - 2010	16:59 MST
<b>Perforation Depth (MD)</b>	<b>From</b>		<b>To</b>		<b>Departed Loc</b>	22 - Jul - 2010	18:00 MST

### Well Data

Description	New / Used	Max pressure psig	Size in	ID in	Weight lbm/ft	Thread	Grade	Top MD ft	Bottom MD ft	Top TVD ft	Bottom TVD ft
OPEN HOLE				12.25				.	825.	.	825.
SURFACE CASING	Unknown		9.625	8.921	36.		J-55	.	805.3	.	805.3

### Sales/Rental/3<sup>rd</sup> Party (HES)

Description	Qty	Qty uom	Depth	Supplier
PLUG,CMTG,TOP,9 5/8,HWE,8.16 MIN/9.06 MA	1	EA		
ADC (AUTO DENSITY CTRL) SYS, /JOB,ZI	1	JOB		
R/A DENSOMETER W/CHART RECORDER,/JOB,ZI	1	JOB		

### Tools and Accessories

Type	Size	Qty	Make	Depth	Type	Size	Qty	Make	Depth	Type	Size	Qty	Make
Guide Shoe					Packer					Top Plug			
Float Shoe					Bridge Plug					Bottom Plug			
Float Collar					Retainer					SSR plug set			
Insert Float										Plug Container			
Stage Tool										Centralizers			

### Miscellaneous Materials

Gelling Agt	Conc	Surfactant	Conc	Acid Type	Qty	Conc	%
Treatment Fld	Conc	Inhibitor	Conc	Sand Type	Size	Qty	

Fluid Data										
Stage/Plug #: 1										
Fluid #	Stage Type	Fluid Name	Qty	Qty uom	Mixing Density lbm/gal	Yield ft <sup>3</sup> /sk	Mix Fluid Gal/sk	Rate bbl/min	Total Mix Fluid Gal/sk	
1	WATER SPACER		20.00	bbl	8.33	.0	.0	6.0		
2	LEAD CEMENT	VERSACEM (TM) SYSTEM (452010)	120.0	sacks	12.3	2.38	13.75	6.0	13.75	
13.75 Gal		FRESH WATER								
3	TAIL CEMENT	SWIFTCES (TM) SYSTEM (452990)	120.0	sacks	14.2	1.43	6.88	6.0	6.72	
6.715 Gal		FRESH WATER								
4	Displacement		58.7	bbl	8.33	.0	.0	6.0		
Calculated Values		Pressures		Volumes						
Displacement	58.7	Shut In: Instant		Lost Returns	NO	Cement Slurry	81.3	Pad		
Top Of Cement	SURFACE	5 Min		Cement Returns	23	Actual Displacement	58.6	Treatment		
Frac Gradient		15 Min		Spacers	20	Load and Breakdown		Total Job	160	
Rates										
Circulating		Mixing	6	Displacement	6	Avg. Job	6			
Cement Left In Pipe	Amount	45.7 ft	Reason	Shoe Joint						
Frac Ring # 1 @	ID	Frac ring # 2 @	ID	Frac Ring # 3 @	ID	Frac Ring # 4 @	ID			
The Information Stated Herein Is Correct				Customer Representative Signature						

*The Road to Excellence Starts with Safety*

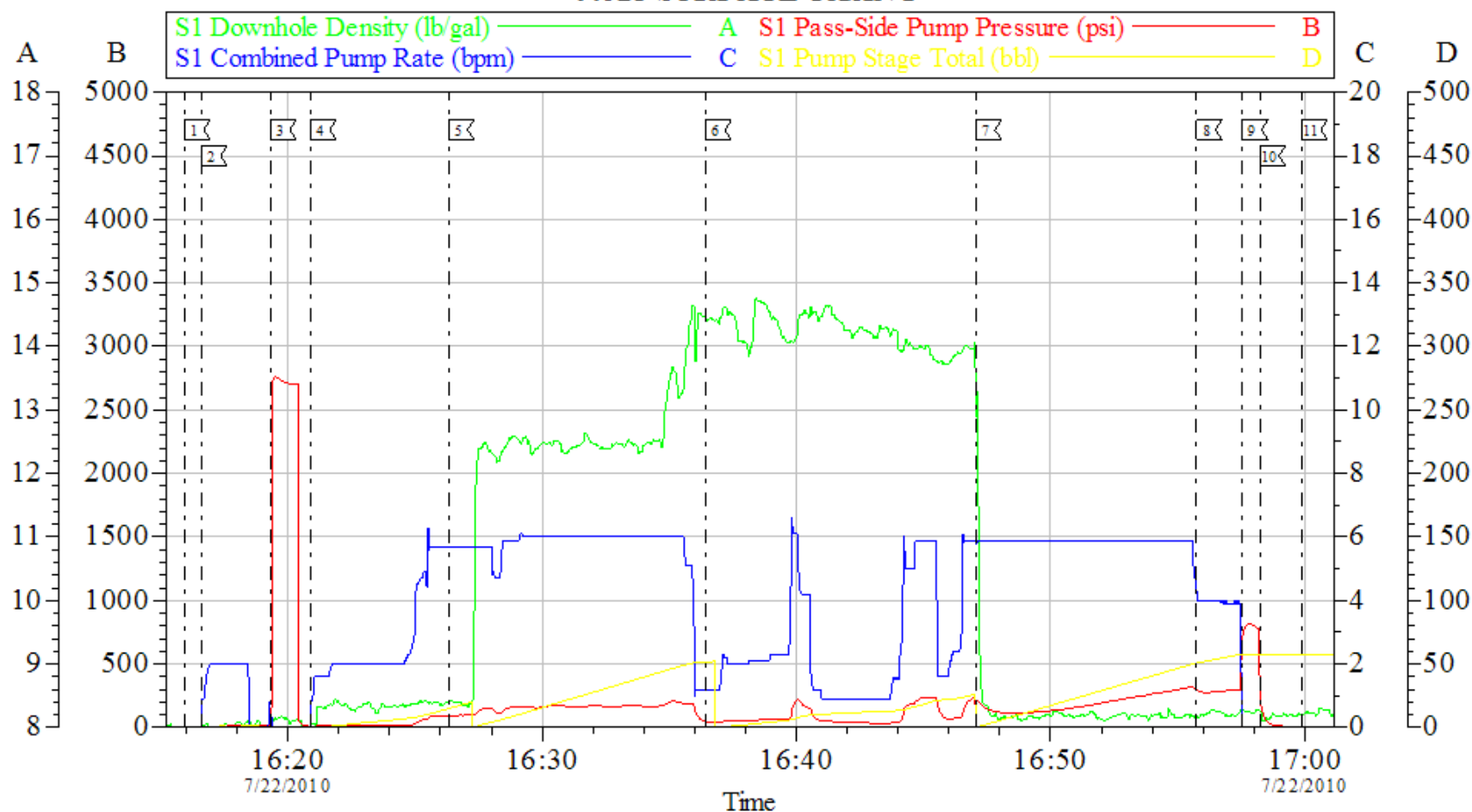
<b>Sold To #:</b> 343492	<b>Ship To #:</b> 2794474	<b>Quote #:</b>	<b>Sales Order #:</b> 7506102
<b>Customer:</b> BILL BARRETT CORPORATION E-BILL		<b>Customer Rep:</b> South, Jodi	
<b>Well Name:</b> Werner	<b>Well #:</b> 34C-23-692	<b>API/UWI #:</b> 05-045-19242	
<b>Field:</b> MAMM CREEK	<b>City (SAP):</b> Silt	<b>County/Parish:</b> Garfield	<b>State:</b> Colorado
<b>Legal Description:</b>			
<b>Lat:</b> N 39.508 deg. OR N 39 deg. 30 min. 27.659 secs.		<b>Long:</b> W 107.63 deg. OR W -108 deg. 22 min. 11.086 secs.	
<b>Contractor:</b> PROPETRO		<b>Rig/Platform Name/Num:</b> PROPETRO 1	
<b>Job Purpose:</b> Cement Surface Casing			<b>Ticket Amount:</b>
<b>Well Type:</b> Development Well		<b>Job Type:</b> Cement Surface Casing	
<b>Sales Person:</b> METLI, MARSHALL		<b>Srvc Supervisor:</b> JAMISON, PRICE	<b>MBU ID Emp #:</b> 229155

Activity Description	Date/Time	Cht #	Rate bbl/ min	Volume bbl		Pressure psig		Comments
				Stage	Total	Tubing	Casing	
Call Out	07/22/2010 07:30							TD 825 HOLE SIZE 12.25 TP 805.3 SHOE JOINT 45.7 CASING 9.625 GRADE J-55 NO MUD WELL WAS AIR MIST DRILLED
Depart Yard Safety Meeting	07/22/2010 07:50							
Crew Leave Yard	07/22/2010 08:00							
Arrive At Loc	07/22/2010 10:00							
Assessment Of Location Safety Meeting	07/22/2010 10:20							
Pre-Rig Up Safety Meeting	07/22/2010 15:30							
Pre-Job Safety Meeting	07/22/2010 16:00							
Start Job	07/22/2010 16:15							
Prime Pumps	07/22/2010 16:16		2	2			19.0	FRESH WATER
Test Lines	07/22/2010 16:19						2000. 0	
Pump Water	07/22/2010 16:20		6	20			96.0	FRESH WATER
Pump Lead Cement	07/22/2010 16:26		6	50.9			176.0	MIXED @ 12.3 PPG YIELD 2.38 WAT/REQ 13.77 120 SKS
Pump Tail Cement	07/22/2010 16:36		6	30.6			200.0	MIXED @ 14.2 PPG YIELD 1.43 WAT/REQ 6.85 120 SKS
Drop Plug	07/22/2010 16:47							GOT RETURNES @ 23 AWAY ON TAIL

Activity Description	Date/Time	Cht #	Rate bbl/min	Volume bbl		Pressure psig		Comments
				Stage	Total	Tubing	Casing	
Pump Displacement	07/22/2010 16:47		6					FRESH WATER
Slow Rate	07/22/2010 16:55		4	49			322.0	
Bump Plug	07/22/2010 16:57		4	58.7			300.0	PRESSURED UP TO 810 PSI
Check Floats	07/22/2010 16:58							FLOATS HELD
End Job	07/22/2010 16:59							CEMENT BACK TO SURFACE 23 BBLS
Post-Job Safety Meeting (Pre Rig-Down)	07/22/2010 17:10							CASING WAS NOT MOVED THROUGHOUT JOB
Depart Location Safety Meeting	07/22/2010 17:50							
Crew Leave Location	07/22/2010 18:00							THANKS FOR USING HALLIBURTON BILL JAMISON & CREW

# BILL BARRETT

## 9.625 SURFACE CASING



Local Event Log			
1 START JOB	16:15:56	2 PRIME LINES	16:16:36
3 TEST LINES	16:19:19	4 START FRESH WATER SPACER	16:20:54
5 START LEAD CEMENT	16:20:54	6 START TAIL CEMENT	16:26:19
7 DROP PLUG / START DISPLACEMENT	16:47:03	8 SLOW RATE	16:55:44
9 BUMP PLUG	16:57:32	10 CHECK FLOATS	16:58:14
11 END JOB	16:59:52		

Customer: BILL BARRETT	Job Date: 22-Jul-2010	Sales Order #: 7506102
Well Description: WERNER 34C-23-692	Job Type: CEMENT	ADC Used: YES
Company Rep: JODI SOUTH	Cement Supervisor: BILL JAMISON	Elite #: 4 JESSE HAYES

**HALLIBURTON**  
OptiCem v6.3.4  
22-Jul-10 17:09