

BILL BARRETT CORPORATION E-BILL  
DO NOT MAIL-1099 18TH ST,STE 2300W  
DENVER, Colorado

Werner 33A-23-692

**PROPETRO 1**

## **Post Job Summary** **Cement Surface Casing**

Prepared for: JODI SOUTH  
Date Prepared: 7/21/10  
Version: 1

Service Supervisor: JAMISON, PRICE

Submitted by:

**HALLIBURTON**

## The Road to Excellence Starts with Safety

Sold To #: 343492	Ship To #: 2794476	Quote #:	Sales Order #: 7506094
Customer: BILL BARRETT CORPORATION E-BILL	Customer Rep: South, Jodi		
Well Name: Werner	Well #: 33A-23-692	API/UWI #: 05-045-19247	
Field: MAMM CR	City (SAP): Silt	County/Parish: Garfield	State: Colorado
Lat: N 39.508 deg. OR N 39 deg. 30 min. 27.972 secs.	Long: W 107.63 deg. OR W -108 deg. 22 min. 11.078 secs.		
Contractor: PROPETRO	Rig/Platform Name/Num: PROPETRO 1		
Job Purpose: Cement Surface Casing			
Well Type: Development Well	Job Type: Cement Surface Casing		
Sales Person: METLI, MARSHALL	Srv Supervisor: JAMISON, PRICE	MBU ID Emp #: 229155	

### Job Personnel

HES Emp Name	Exp Hrs	Emp #	HES Emp Name	Exp Hrs	Emp #	HES Emp Name	Exp Hrs	Emp #
HAYES, JESSE Doug		403601	JAMISON, PRICE W		229155	JENSEN, SHANE Lynn		441759

### Equipment

HES Unit #	Distance-1 way	HES Unit #	Distance-1 way	HES Unit #	Distance-1 way	HES Unit #	Distance-1 way
10616651C	mile	10867094	mile	10897925	mile	10995025	mile
11259881	mile						

### Job Hours

Date	On Location Hours	Operating Hours	Date	On Location Hours	Operating Hours	Date	On Location Hours	Operating Hours
7/20/10	1.5	0	7/21/10	6	1			

TOTAL	Total is the sum of each column separately							
-------	--	--	--	--	--	--	--	--

### Job

Formation Name	Top	Bottom	Called Out	Date	Time	Time Zone
Formation Depth (MD)			On Location	20 - Jul - 2010	18:00	MST
Form Type	BHST		Job Started	20 - Jul - 2010	22:30	MST
Job depth MD	804.9 ft	Job Depth TVD	Job Completed	21 - Jul - 2010	05:04	MST
Water Depth		Wk Ht Above Floor	Departed Loc	21 - Jul - 2010	05:42	MST
Perforation Depth (MD)	From	To		21 - Jul - 2010	06:00	MST

### Well Data

Description	New / Used	Max pressure psig	Size in	ID in	Weight lbm/ft	Thread	Grade	Top MD ft	Bottom MD ft	Top TVD ft	Bottom TVD ft
OPEN HOLE				12.25				.	820.	.	820.
SURFACE CASING	Unknown		9.625	8.921	36.		J-55	.	804.9	.	804.9

### Sales/Rental/3<sup>rd</sup> Party (HES)

Description	Qty	Qty uom	Depth	Supplier
PLUG,CMTG,TOP,9 5/8,HWE,8.16 MIN/9.06 MA	1	EA		
ADC (AUTO DENSITY CTRL) SYS, /JOB,ZI	1	JOB		
R/A DENSOMETER W/CHART RECORDER,/JOB,ZI	1	JOB		
PORT. DAS W/CEMWIN;ACQUIRE W/HES, ZI	1	JOB		

### Tools and Accessories

Type	Size	Qty	Make	Depth	Type	Size	Qty	Make	Depth	Type	Size	Qty	Make
Guide Shoe					Packer					Top Plug			
Float Shoe					Bridge Plug					Bottom Plug			
Float Collar					Retainer					SSR plug set			
Insert Float										Plug Container			
Stage Tool										Centralizers			

### Miscellaneous Materials

Gelling Agt	Conc	Surfactant	Conc	Acid Type	Qty	Conc	%
Treatment Fld	Conc	Inhibitor	Conc	Sand Type	Size	Qty	

Fluid Data										
Stage/Plug #: 1										
Fluid #	Stage Type	Fluid Name	Qty	Qty uom	Mixing Density lbm/gal	Yield ft <sup>3</sup> /sk	Mix Fluid Gal/sk	Rate bbl/min	Total Mix Fluid Gal/sk	
1	WATER SPACER		20.00	bbl	8.33	.0	.0	6.0		
2	LEAD CEMENT	VERSACEM (TM) SYSTEM (452010)	120.0	sacks	12.3	2.38	13.75	6.0	13.75	
		-12.505 Gal FRESH WATER								
3	TAIL CEMENT	SWIFTCES (TM) SYSTEM (452990)	120.0	sacks	14.2	1.43	6.88	6.0	6.72	
		6.715 Gal FRESH WATER								
4	DISPLACEMENT		58.7	bbl	8.33	.0	.0	.0		
Calculated Values		Pressures		Volumes						
Displacement	58.7	Shut In: Instant		Lost Returns	NO	Cement Slurry	81.3	Pad		
Top Of Cement	SURFACE	5 Min		Cement Returns	26	Actual Displacement	58.7	Treatment		
Frac Gradient		15 Min		Spacers	20	Load and Breakdown		Total Job	160	
Rates										
Circulating		Mixing	6	Displacement	6	Avg. Job	6			
Cement Left In Pipe	Amount	45 ft	Reason	Shoe Joint						
Frac Ring # 1 @	ID	Frac ring # 2 @	ID	Frac Ring # 3 @	ID	Frac Ring # 4 @	ID			
The Information Stated Herein Is Correct				Customer Representative Signature						

*The Road to Excellence Starts with Safety*

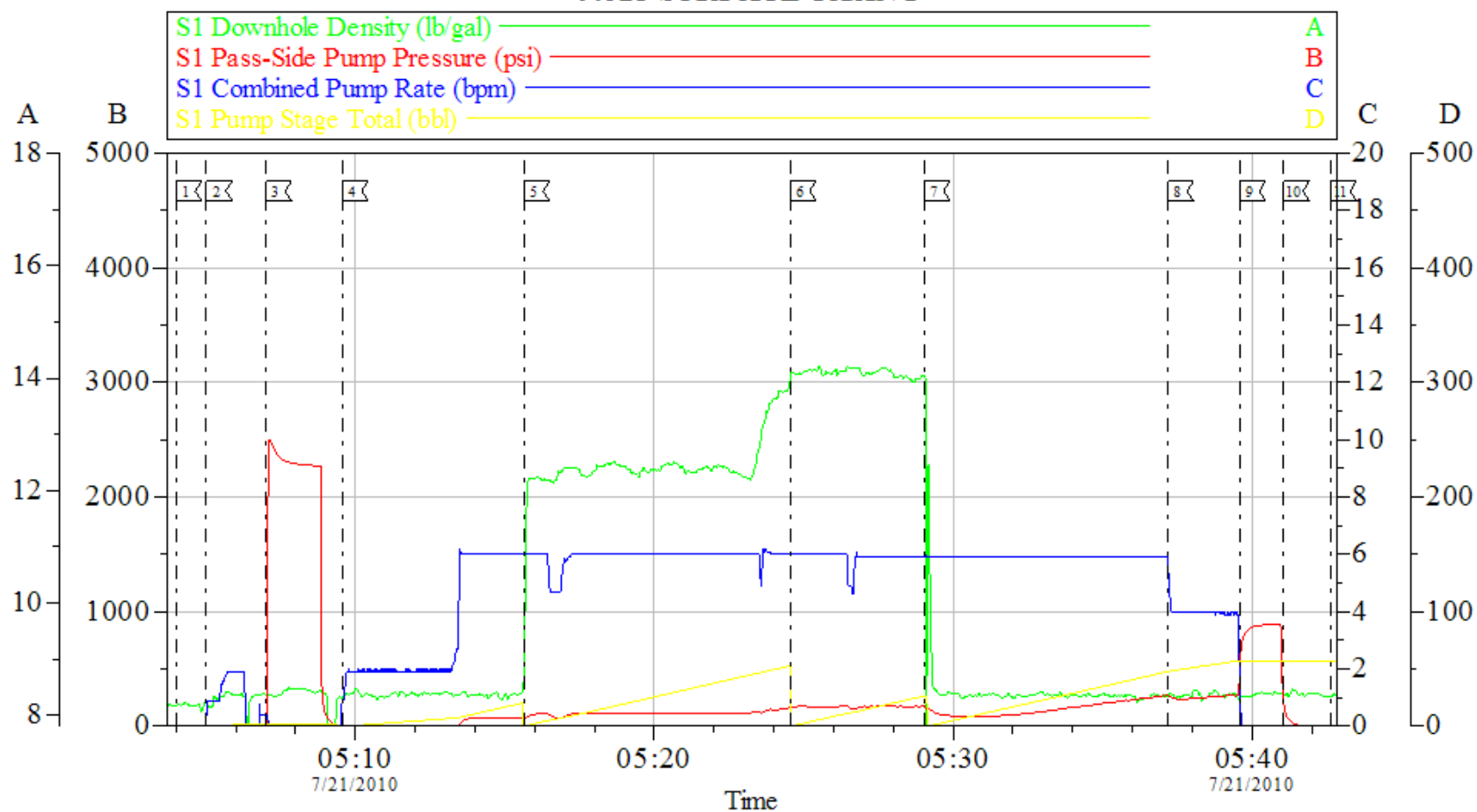
<b>Sold To #:</b> 343492		<b>Ship To #:</b> 2794476		<b>Quote #:</b>		<b>Sales Order #:</b> 7506094	
<b>Customer:</b> BILL BARRETT CORPORATION E-BILL				<b>Customer Rep:</b> South, Jodi			
<b>Well Name:</b> Werner			<b>Well #:</b> 33A-23-692			<b>API/UWI #:</b> 05-045-19247	
<b>Field:</b> MAMM CR		<b>City (SAP):</b> Silt		<b>County/Parish:</b> Garfield			<b>State:</b> Colorado
<b>Legal Description:</b>							
<b>Lat:</b> N 39.508 deg. OR N 39 deg. 30 min. 27.972 secs.				<b>Long:</b> W 107.63 deg. OR W -108 deg. 22 min. 11.078 secs.			
<b>Contractor:</b> PROPETRO			<b>Rig/Platform Name/Num:</b> PROPETRO 1				
<b>Job Purpose:</b> Cement Surface Casing						<b>Ticket Amount:</b>	
<b>Well Type:</b> Development Well			<b>Job Type:</b> Cement Surface Casing				
<b>Sales Person:</b> METLI, MARSHALL			<b>Srvc Supervisor:</b> JAMISON, PRICE			<b>MBU ID Emp #:</b> 229155	

Activity Description	Date/Time	Cht #	Rate bbl/min	Volume bbl		Pressure psig		Comments
				Stage	Total	Tubing	Casing	
Call Out	07/20/2010 18:00							TD 820 HOLE SIZE 12.25 TP 804.9 SHOE JOINT 45 CASING 9.625 GRADE J-55 NO MUD WELL WAS AIR MIST DRILLED
Depart Yard Safety Meeting	07/20/2010 20:00							
Crew Leave Yard	07/20/2010 20:30							
Arrive At Loc	07/20/2010 22:30							
Assessment Of Location Safety Meeting	07/20/2010 22:45							
Pre-Rig Up Safety Meeting	07/21/2010 04:30							
Pre-Job Safety Meeting	07/21/2010 05:00							
Start Job	07/21/2010 05:04							
Prime Pumps	07/21/2010 05:05		2	2			5.0	FRESH WATER
Test Lines	07/21/2010 05:07						2000. 0	
Pump Water	07/21/2010 05:09		6	20			70.0	FRESH WATER
Pump Lead Cement	07/21/2010 05:15		6	50.9			116.0	MIXED @ 12.3 PPG YIELD 2.38 WAT/REQ 13.77 120 SKS
Pump Tail Cement	07/21/2010 05:24		6	30.6			171.0	MIXED @ 14.2 PPG YIELD 1.43 WAT/REQ 6.85 120 SKS
Drop Plug	07/21/2010 05:29							GOT RETURNES @ 23 AWAY ON TAIL

Activity Description	Date/Time	Cht #	Rate bbl/min	Volume bbl		Pressure psig		Comments
				Stage	Total	Tubing	Casing	
Pump Displacement	07/21/2010 05:29		6					FRESH WATER
Slow Rate	07/21/2010 05:37		4	48			268.0	
Bump Plug	07/21/2010 05:39		4	58.7			270.0	PRESSURED UP TO 885 PSI
Check Floats	07/21/2010 05:41							FLOATS HELD
End Job	07/21/2010 05:42							CEMENT BACK TO SURFACE 26 BBLS
Post-Job Safety Meeting (Pre Rig-Down)	07/21/2010 05:45							CASING WAS NOT MOVED THROUGHOUT JOB
Standby Rig	07/21/2010 06:00							WAITING ON NEXT WELL

# BILL BARRETT

## 9.625 SURFACE CASING



### Local Event Log

1 START JOB	05:04:00	2 PRIME LINES	05:05:01	3 TEST LINES	05:07:00
4 START FRESH WATER SPACER	05:09:34	5 START LEAD CEMENT	05:15:38	6 START TAIL CEMENT	05:24:33
7 DROP PLUG / START DISPLACEMENT	05:29:02	8 SLOW RATE	05:37:11	9 BUMP PLUG	05:39:36
10 CHECK FLOATS	05:41:04	11 END JOB	05:42:38		

Customer: BILL BARRETT  
Well Description: WERNER 33A-23-692  
Company Rep: JODI SOUTH

Job Date: 21-Jul-2010  
Job Type: CEMENT  
Cement Supervisor: BILL JAMISON

Sales Order #: 7506094  
ADC Used: YES  
Elite #: 4 JESSE HAYES

HALLIBURTON  
OptiCem v6.3.4  
21-Jul-10 05:53