

BILL BARRETT CORPORATION E-BILL  
DO NOT MAIL-1099 18TH ST,STE 2300W  
DENVER, Colorado

GGU BARGE 22D-32-691

BILL BARRETT/ PETRO PLUS

## **Post Job Summary** **Cement Surface Casing**

Prepared for:  
Date Prepared:  
Version: 1

Service Supervisor: SMITH, DUSTIN

Submitted by:

**HALLIBURTON**

## The Road to Excellence Starts with Safety

Sold To #: 343492	Ship To #: 2800915	Quote #:	Sales Order #: 7565562
Customer: BILL BARRETT CORPORATION E-BILL	Customer Rep: South, Jodi		
Well Name: GGU BARGE	Well #: 22D-32-691	API/UWI #: 05-045-19452	
Field: MAMM CREEK	City (SAP): UNKNOWN	County/Parish: Garfield	State: Colorado
Lat: N 39.486 deg. OR N 39 deg. 29 min. 9.766 secs.	Long: W 107.58 deg. OR W -108 deg. 25 min. 12.194 secs.		
Contractor: PROPETRO	Rig/Platform Name/Num: PRO PETRO		
Job Purpose: Cement Surface Casing			
Well Type: Development Well	Job Type: Cement Surface Casing		
Sales Person: METLI, MARSHALL	Srvc Supervisor: SMITH, DUSTIN	MBU ID Emp #: 418015	

## Job Personnel

HES Emp Name	Exp Hrs	Emp #	HES Emp Name	Exp Hrs	Emp #	HES Emp Name	Exp Hrs	Emp #
LEIST, JAMES R	3	362787	SALAZAR, PAUL Omar	3	445614	SLAUGHTER, JESSE Dean	3	454315
SMITH, DUSTIN Michael	3	418015						

## Equipment

HES Unit #	Distance-1 way	HES Unit #	Distance-1 way	HES Unit #	Distance-1 way	HES Unit #	Distance-1 way
10296152C	120 mile	10784053	120 mile	10897797	120 mile	10897891	120 mile
11259882	120 mile						

## Job Hours

Date	On Location Hours	Operating Hours	Date	On Location Hours	Operating Hours	Date	On Location Hours	Operating Hours
08/17/10	4	3						

**TOTAL** Total is the sum of each column separately

## Job

## Job Times

Formation Name	Formation Depth (MD)	Top	Bottom	Called Out	Date	Time	Time Zone
Form Type			BHST	On Location			
Job depth MD	785. ft		Job Depth TVD	765.1 ft	Job Started	17 - Aug - 2010	19:50 MST
Water Depth			Wk Ht Above Floor	. ft	Job Completed	17 - Aug - 2010	20:25 MST
Perforation Depth (MD)	From		To	Departed Loc			

## Well Data

Description	New / Used	Max pressure psig	Size in	ID in	Weight lbm/ft	Thread	Grade	Top MD ft	Bottom MD ft	Top TVD ft	Bottom TVD ft
-------------	------------	-------------------	---------	-------	---------------	--------	-------	-----------	--------------	------------	---------------

Sales/Rental/3<sup>rd</sup> Party (HES)

Description	Qty	Qty uom	Depth	Supplier
PLUG,CMTG,TOP,9 5/8,HWE,8.16 MIN/9.06 MA	1	EA		
R/A DENSOMETER W/CHART RECORDER,/JOB,ZI	1	JOB		
PORT. DATA ACQUIS. W/OPTICEM RT W/HES	1	EA		
ADC (AUTO DENSITY CTRL) SYS, /JOB,ZI	1	JOB		

## Tools and Accessories

Type	Size	Qty	Make	Depth	Type	Size	Qty	Make	Depth	Type	Size	Qty	Make
Guide Shoe					Packer					Top Plug	9 5/8	1	
Float Shoe					Bridge Plug					Bottom Plug			
Float Collar					Retainer					SSR plug set			
Insert Float										Plug Container	9 5/8	1	
Stage Tool										Centralizers			

## Miscellaneous Materials

Gelling Agt	Conc	Surfactant	Conc	Acid Type	Qty	Conc	%
Treatment Fld	Conc	Inhibitor	Conc	Sand Type	Size	Qty	

## Fluid Data

Stage/Plug #: 1

Fluid #	Stage Type	Fluid Name	Qty	Qty uom	Mixing Density lbm/gal	Yield ft <sup>3</sup> /sk	Mix Fluid Gal/sk	Rate bbl/min	Total Mix Fluid Gal/sk
1	WATER SPACER		20.00	bbl	.	.0	.0	6.0	
2	Lead Cement	VERSACEM (TM) SYSTEM (452010)	120.0	sacks	12.3	2.38	13.75	6	
3	Tail Cement	SWIFTCEM (TM) SYSTEM (452990)	120.0	sacks	14.2	1.43	6.88	6	6.88
6.88 Gal		FRESH WATER							
4	DISPLACEMENT		55.7	bbl	.	.0	.0	6.0	
<b>Calculated Values</b>		<b>Pressures</b>		<b>Volumes</b>					
Displacement	55.7	Shut In: Instant		Lost Returns	0	Cement Slurry	81.5	Pad	
Top Of Cement	SURFACE	5 Min		Cement Returns	27	Actual Displacement	55.7	Treatment	
Frac Gradient		15 Min		Spacers	20	Load and Breakdown		Total Job	157
<b>Rates</b>									
Circulating		Mixing	6	Displacement	6	Avg. Job			6
Cement Left In Pipe	Amount	44.02 ft	Reason	Shoe Joint					
Frac Ring # 1 @	ID	Frac ring # 2 @	ID	Frac Ring # 3 @	ID	Frac Ring # 4 @	ID		
The Information Stated Herein Is Correct				Customer Representative Signature					

*The Road to Excellence Starts with Safety*

Sold To #: 343492		Ship To #: 2800915		Quote #:		Sales Order #: 7565562	
Customer: BILL BARRETT CORPORATION E-BILL				Customer Rep: South, Jodi			
Well Name: GGU BARGE			Well #: 22D-32-691		API/UWI #: 05-045-19452		
Field: MAMM CREEK		City (SAP): UNKNOWN		County/Parish: Garfield		State: Colorado	
Legal Description:							
Lat: N 39.486 deg. OR N 39 deg. 29 min. 9.766 secs.				Long: W 107.58 deg. OR W -108 deg. 25 min. 12.194 secs.			
Contractor: PROPETRO			Rig/Platform Name/Num: PRO PETRO				
Job Purpose: Cement Surface Casing					Ticket Amount:		
Well Type: Development Well			Job Type: Cement Surface Casing				
Sales Person: METLI, MARSHALL			Srvc Supervisor: SMITH, DUSTIN			MBU ID Emp #: 418015	

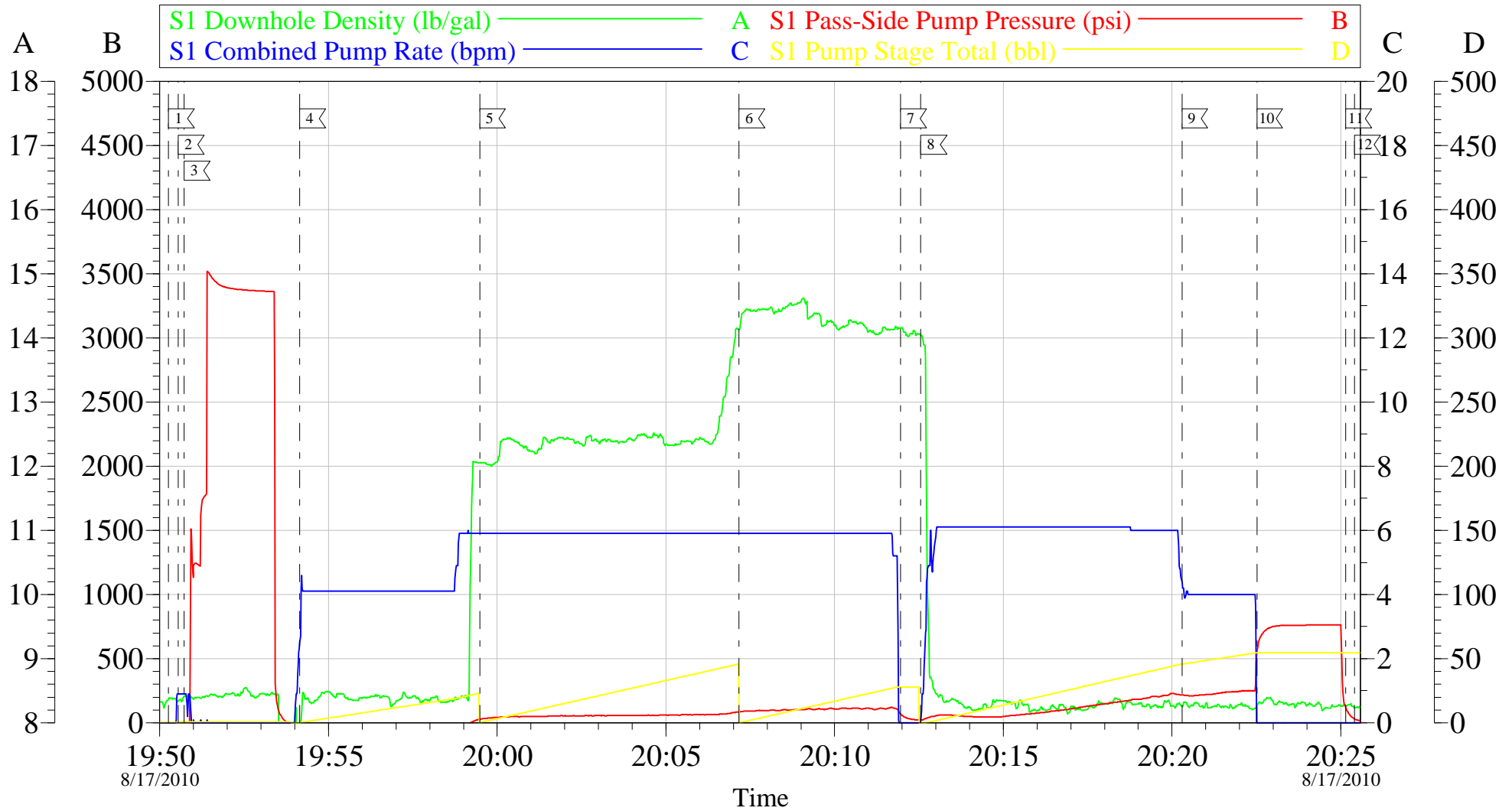
Activity Description	Date/Time	Cht #	Rate bbl/ min	Volume bbl		Pressure psig		Comments
				Stage	Total	Tubing	Casing	
Assessment Of Location Safety Meeting	08/17/2010 18:30							ALL HES EMPLOYEES
Pre-Rig Up Safety Meeting	08/17/2010 18:45							ALL HES EMPLOYEES
Rig-Up Equipment	08/17/2010 19:00							RIG UP COMPLETED AT END OF LAST JOB CREW STAYED ON LOCATION
Pre-Job Safety Meeting	08/17/2010 19:30							ALL HES EMPLOYEES AND RIG CREW
Rig-Up Completed	08/17/2010 19:40							TD: 785 TP: 765.09 SJ: 44.02 9 5/8 36# CSG 12 3/8 OH
Start Job	08/17/2010 19:50							JOB PUMPED OFFLINE, HOLE DRILLED WITH AIR, NO FLUID IN WELLBORE AT TIME OF CEMENT PIPE STATIC AT TIME OF CEMENT JOB NO QUICK LATCH USED ON CEMENT HEAD
Test Lines	08/17/2010 19:50					3400.0		PRESSURE TEST OK
Pump Spacer	08/17/2010 19:54		4	20	20		20.0	FRESH WATER
Pump Lead Cement	08/17/2010 19:59		6	50.9	50.9		80.0	120 SKS 12.3 PPG 2.38 YIELD 13.77 GAL/SK
Pump Tail Cement	08/17/2010 20:07		6	20.6	30.6		135.0	120 SKS 14.2 PPG 1.43 YIELD 6.85 GAL/SK
Shutdown	08/17/2010 20:11							GOT RETURNS 20 BBLS INTO TAIL CEMENT
Drop Plug	08/17/2010 20:11							PLUG AWAY NO PROBLEMS
Pump Displacement	08/17/2010 20:12		6	55.7	55.7		150.0	FRESH WATER

Sold To # : 343492      Ship To # : 2800915      Quote # :      Sales Order # : 7565562

Activity Description	Date/Time	Cht #	Rate bbl/ min	Volume bbl		Pressure psig		Comments
				Stage	Total	Tubing	Casing	
Slow Rate	08/17/2010 20:20		4	45.7	45.7		300.0	
Bump Plug	08/17/2010 20:22		4	55.7	55.7		780.0	
Check Floats	08/17/2010 20:25							FLOATS HELD
End Job	08/17/2010 20:25							27 BBLS CEMENT TO SURFACE
Pre-Rig Down Safety Meeting	08/17/2010 20:30							ALL HES EMPLOYEES
Rig-Down Completed	08/17/2010 21:30							RIG DOWN AND GET READY FOR NEXT JOB
Comment	08/17/2010 21:30							THANK YOU FOR USING HALLIBURTON DUSTIN SMITH AND CREW

# BILL BARRETT

## GGU BARGE 22D-32-691 9 5/8 SURFACE



Customer: BILL BARRETT	Job Date: 17-Aug-2010	Sales Order #: 565562
Well Description: GGU BARGE 22D-32-691	Job Type: 9 5/8 SURFACE	ADC Used: YES
Company Rep: JODI SOUTH	Cement Supervisor: DUSTIN SMITH	Elite #: 9 JESSE SLAUGHTER

OptiCem v6.4.8  
17-Aug-10 20:30