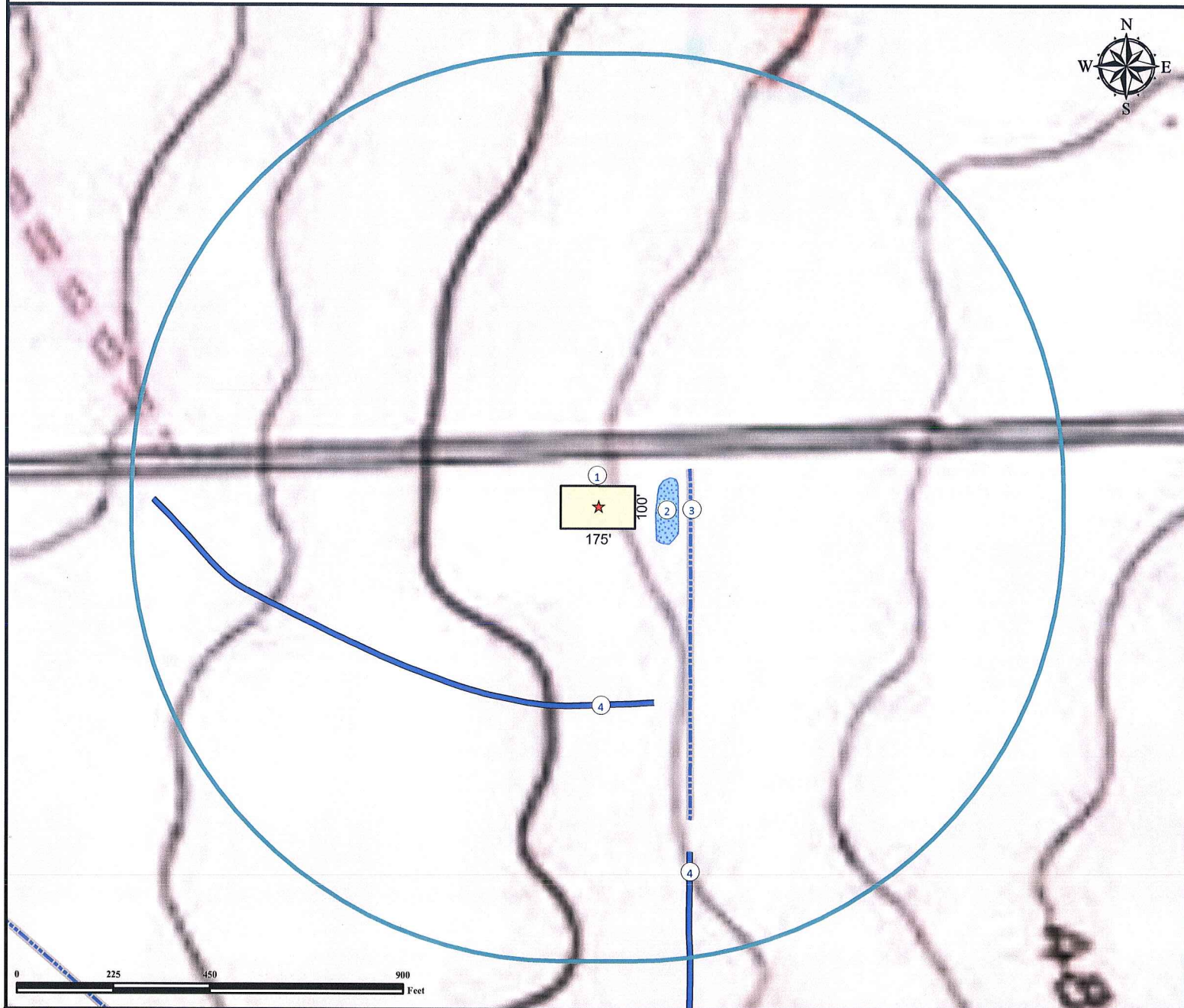


Hydrology Map

WALKER-SHANDS 18-18 Facility

SECTION 18, TOWNSHIP 6 NORTH, RANGE 66 WEST OF THE 6TH PRINCIPAL MERIDIAN



1. Proposed WALKER-SHANDS 18-18 Facility.
2. Irrigation Pond is $\pm 137'$ E.
3. Concrete Irrigation Ditch is $\pm 216'$ E.
4. Dirt Irrigation Ditches are $\pm 460'$ S and $\pm 833'$ SE.

Legend

- | | |
|--|--|
| ★ Reference Point | 1000' Radius |
| Proposed Facility is 175' x 100' | Concrete Ditch/Canal |
| Water Body | Ditch/Canal |

Reference Location

** All Measurements are Made from Reference Point ★ (NAD83) **

LAT: 40.494311° LONG: -104.822666°



Use our resources to find yours!
www.petro-fs.com
 (303) 928-7128

Field Date: 06/16/2010
 Drafting Date: 08/17/2010
 Drafter: KLM
 Checked By: BHF

Data Sources:
 - Topo courtesy of USGS

Prepared for:



BAYSWATER
 EXPLORATION AND PRODUCTION, LLC