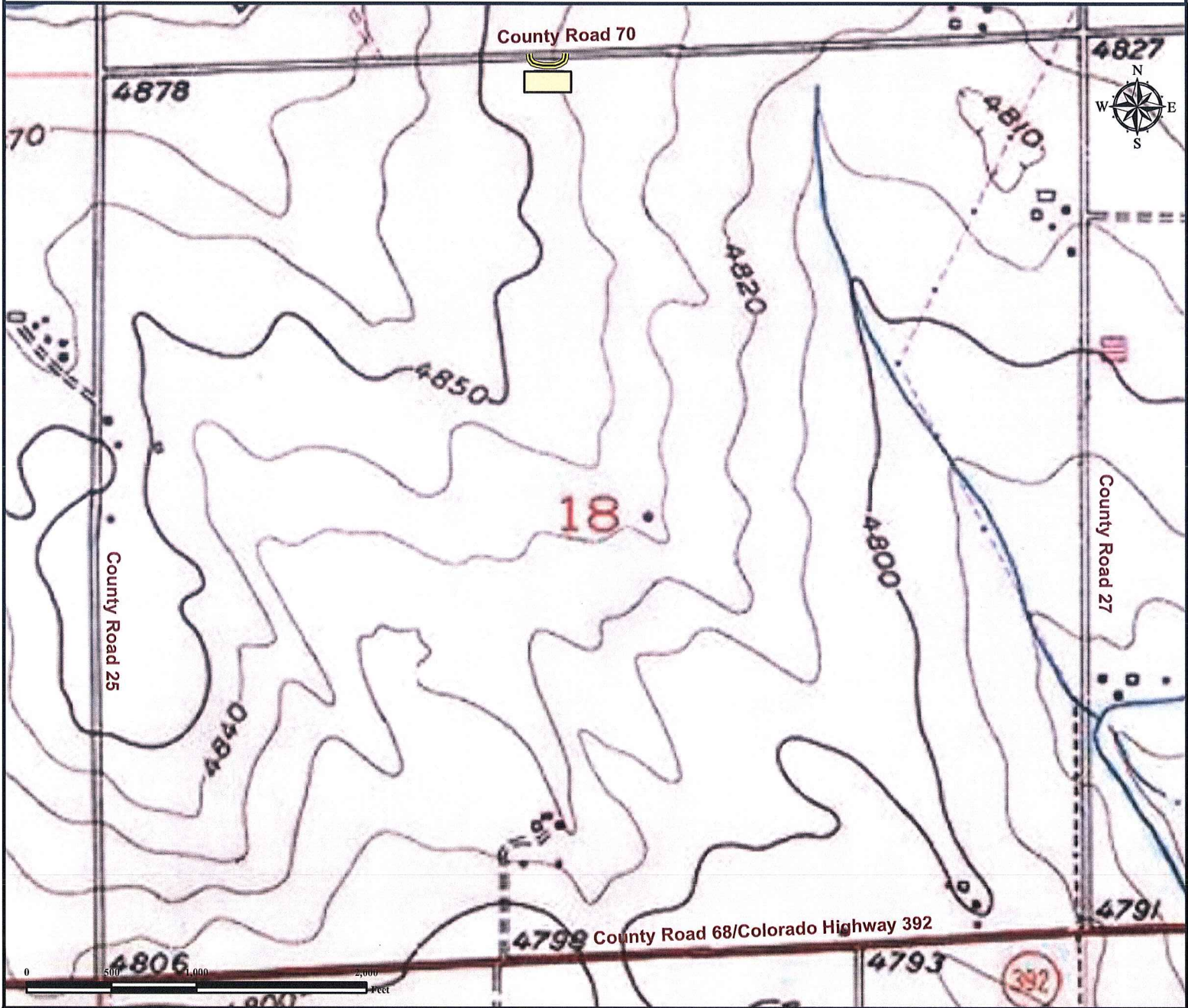


Access Road Map



WALKER-SHANDS 18-18 Facility

SECTION 18, TOWNSHIP 6 NORTH, RANGE 66 WEST OF THE 6TH PRINCIPAL MERIDIAN



Proposed Access to WALKER-SHANDS 18-18 Facility; From the junction of County Road 25 and County Road 70, head east on County Road 70 approximately 4/10 mile. Access is on south side of County Road 70.

** Size of Proposed Facility has Been Exaggerated to be Visible at this Scale. **

Legend <p>★ Reference Point</p>	<p>□ Proposed Facility</p> <p>■ Water Body</p> <p>▨ Flood Plain</p>	<p>□ 1000' Radius</p> <p>— Perennial Stream</p> <p>== Access Road</p>	Reference Location <p>** All Measurements are Made from Reference Point ★ (NAD83) **</p> <p>LAT: 40494311° LONG: -104.822666°</p>
 <p><i>Use our resources to find yours!</i></p> <p>www.petro-fs.com</p> <p>(303) 928-7128</p>	<p>Field Date: 06/16/2010</p> <p>Drafting Date: 08/18/2010</p> <p>Drafter: KLM</p> <p>Checked By: BHF</p>	<p>Data Sources:</p> <p>- Topo Courtesy of USGS</p>	<p>Prepared for:</p> <p> BAYSWATER EXPLORATION AND PRODUCTION, LLC</p>