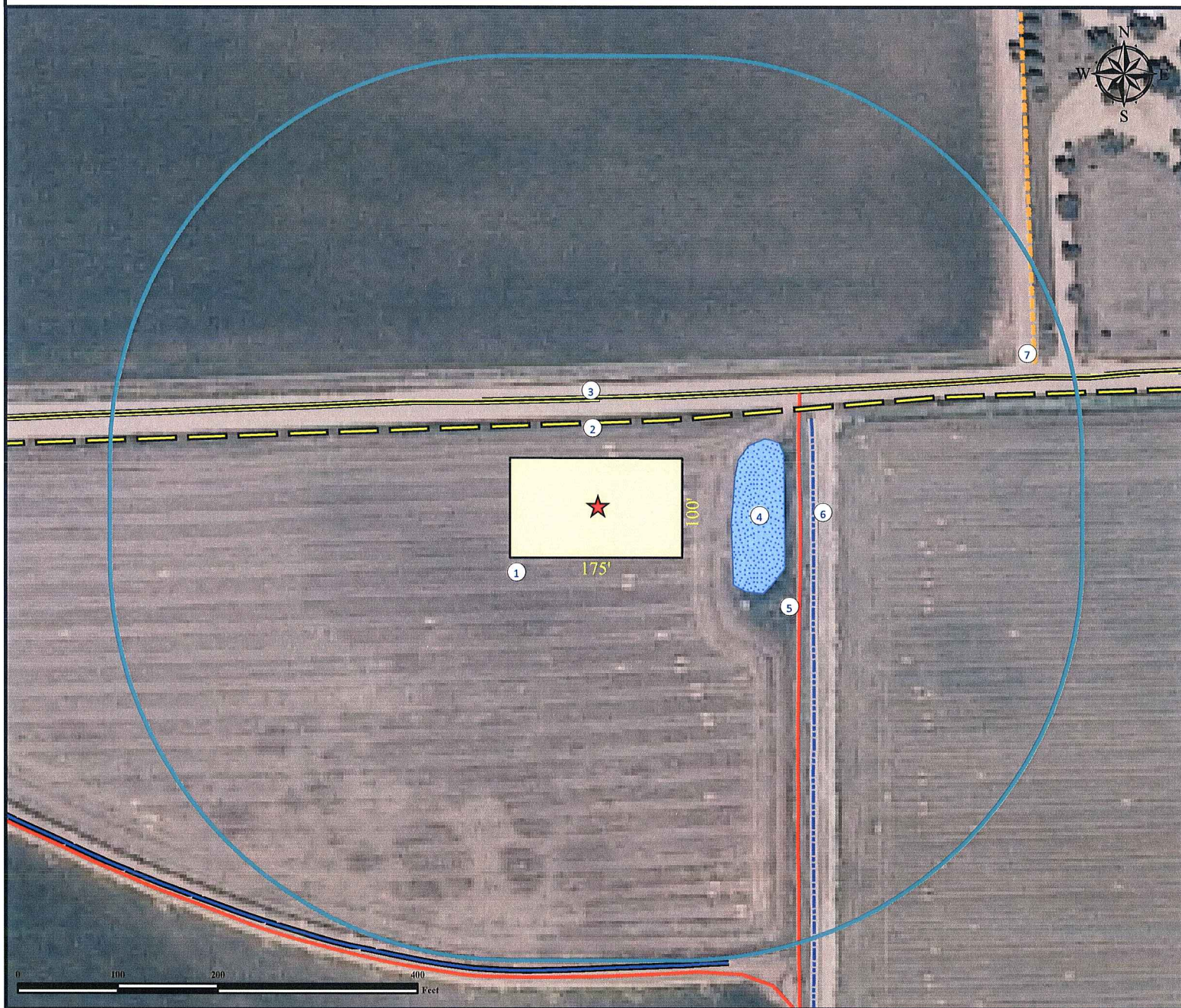


# Location Drawing

## WALKER-SHANDS 18-18 Facility

SECTION 18, TOWNSHIP 6 NORTH, RANGE 66 WEST OF THE 6TH PRINCIPAL MERIDIAN



- |   |   |
|---|---|
| 1. Proposed WALKER-SHANDS 18-18 Facility. | 5. Private Road is $\pm 203'$ E.              |
| 2. Overhead Power Line is $\pm 83'$ N.    | 6. Concrete Irrigation Ditch is $\pm 216'$ E. |
| 3. County Road 70 is $\pm 108'$ N.        | 7. Fence is $\pm 460'$ NE.                    |
| 4. Irrigation Pond is $\pm 137'$ E.       |   |

### Legend

- |   |                                    |  |
|---|------------------------------------|--|
| Reference Point<br>Proposed Facility is 175' x 100' | 400' Radius<br>Water Body<br>Fence | Public Road<br>Concrete Ditch/Canal<br>Private Road<br>Ditch/Canal |
|---|------------------------------------|--|

### Reference Location

\*\* All Measurements are Made from Reference Point (NAD83) \*\*  
**LAT: 40.494311° LONG: -104.822666°**

Surface Use: Open Field



*Use our resources to find yours!*  
[www.petro-fs.com](http://www.petro-fs.com)  
 (303) 928-7128

Field Date: 06/16/2010  
 Drafting Date: 08/16/2010  
 Drafter: KLM  
 Checked By: BHF

Data Sources:  
 - Aerial courtesy of NAIP (2009)

Prepared for:



**BAYSWATER**  
 EXPLORATION AND PRODUCTION, LLC