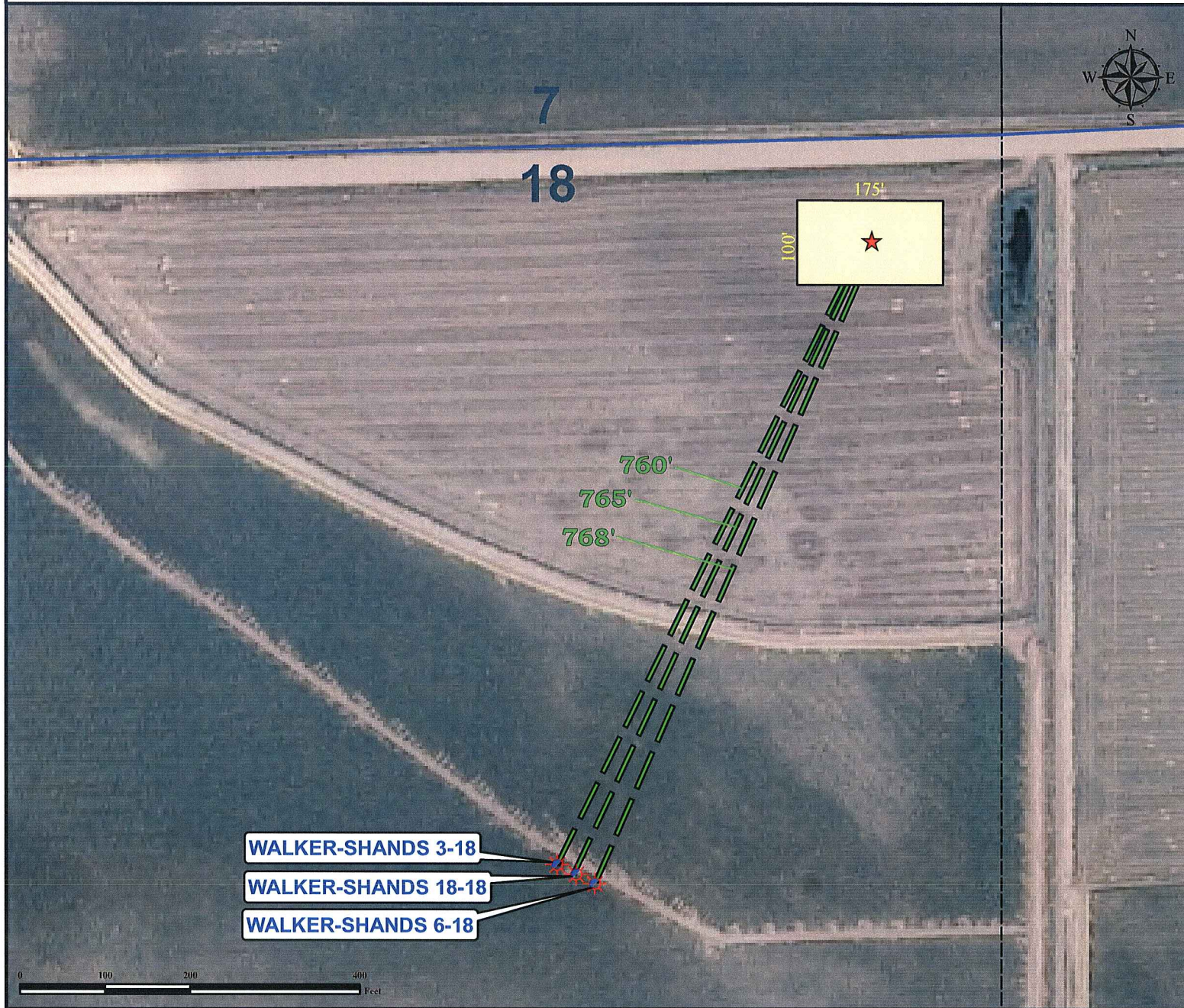


# Proposed Flowline Exhibit WALKER-SHANDS 18-18 Facility

SECTION 18, TOWNSHIP 6 NORTH, RANGE 66 WEST OF THE 6TH PRINCIPAL MERIDIAN



## Legend



Proposed Well



Reference Point



Proposed Facility is  
175' x 100'



Proposed Flowline



Perennial Stream



Quarter Quarter Boundary



Section Boundary

## Reference Location

\*\* All Measurements are Made from  
Reference Point ★ (NAD83) \*\*

LAT: 40.494311° LONG: -104.822666°

Surface Use: Open Field



Use our resources to find yours!  
[www.petro-fs.com](http://www.petro-fs.com)  
(303) 928-7128

Field Date: 06/16/2010  
Drafting Date: 08/18/2010  
Drafter: KLM  
Checked By: BHF

Data Sources:  
- Aerial courtesy of NAIP (2009)

Prepared for:



BAYSWATER  
EXPLORATION AND PRODUCTION, LLC