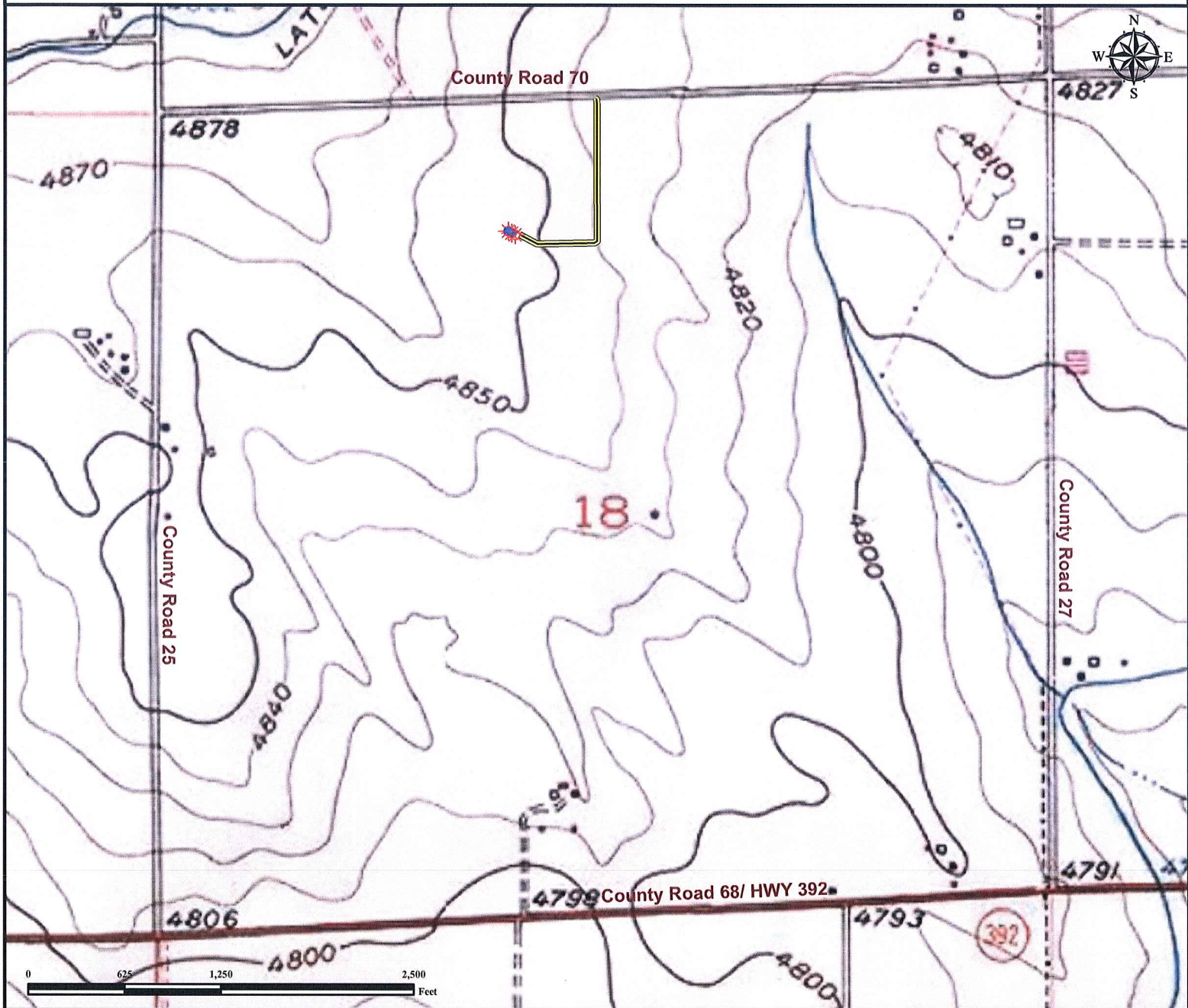


Access Road Map

WALKER-SHANDS 18-18

Multi Well Pad

SECTION 18, TOWNSHIP 6 NORTH, RANGE 66 WEST OF THE 6TH PRINCIPAL MERIDIAN



Proposed Access to Walker-Shands 18-18; From the junction of County Road 25 and County Road 70, head east on County Road 70 approximately 5/10 mile. Access is on south side of County Road 70.

Legend



Proposed Well



Proposed Facility



Water Body



Flood Plain



1000' Radius



Perennial Stream



Access Road

Reference Location

** All Measurements are Made from Reference Well
WALKER-SHANDS 18-18 (NAD83) **

LAT: 40.492278° LONG: -104.823923°



Use our resources to find yours!
www.petro-fs.com
(303) 928-7128

Field Date: 06/16/2010
Drafting Date: 08/05/2010
Drafter: KLM
Checked By: BHF

Data Sources:
- Topo Courtesy of USGS

Prepared for:



BAYSWATER
EXPLORATION AND PRODUCTION, LLC