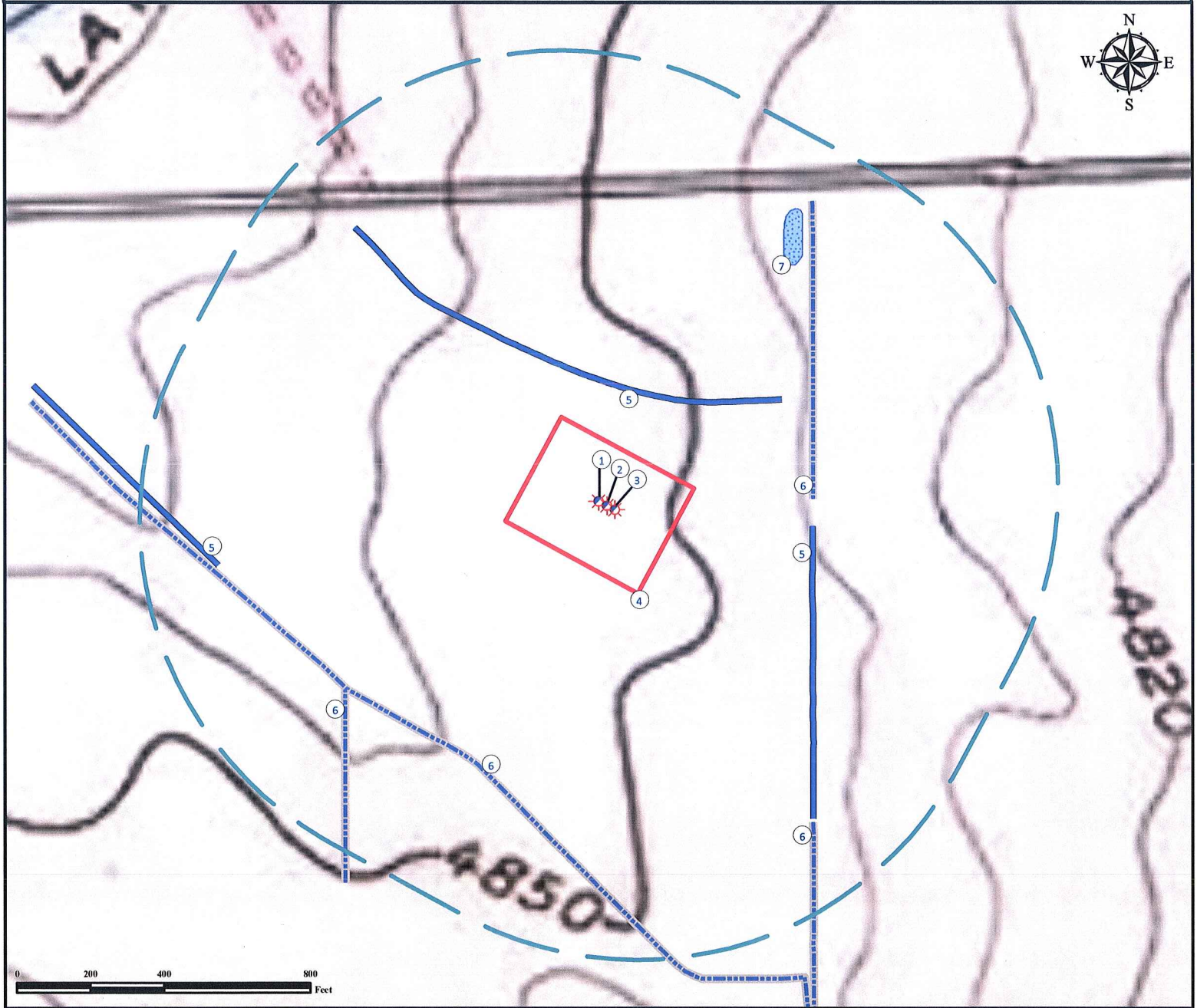


Hydrology Map

WALKER-SHANDS 18-18

Multi Well Pad

SECTION 18, TOWNSHIP 6 NORTH, RANGE 66 WEST OF THE 6TH PRINCIPAL MERIDIAN



- | | |
|---------------------------------------|--|
| 1. Proposed Well WALKER-SHANDS 3-18. | 5. Dirt Irrigation Ditches are $\pm 323'$ N, $\pm 566'$ E, and $\pm 1069'$ SW. |
| 2. Proposed Well WALKER-SHANDS 18-18. | 6. Concrete Irrigation Ditches are $\pm 567'$ E, $\pm 785'$ SW, $\pm 908'$ SW, and $\pm 1040'$ SE. |
| 3. Proposed Well WALKER-SHANDS 6-18. | 7. Pond is $\pm 826'$ NE. |
| 4. Operational Disturbance Area. | |

Legend

- | | |
|------------------|----------------------|
| Proposed Well | 1000' Radius |
| Disturbance Area | Concrete Ditch/Canal |
| Water Body | Ditch/Canal |

Reference Location

**** All Measurements are Made from Reference Well WALKER-SHANDS 18-18 (NAD83) ****

LAT: 40.492278° LONG: -104.823923°



Use our resources to find yours!
www.petro-fs.com
 (303) 928-7128

Field Date: 06/16/2010
 Drafting Date: 08/05/2010
 Drafter: KLM
 Checked By: BHF

Data Sources:
 - Topo courtesy of USGS

Prepared for:



BAYSWATER
 EXPLORATION AND PRODUCTION, LLC