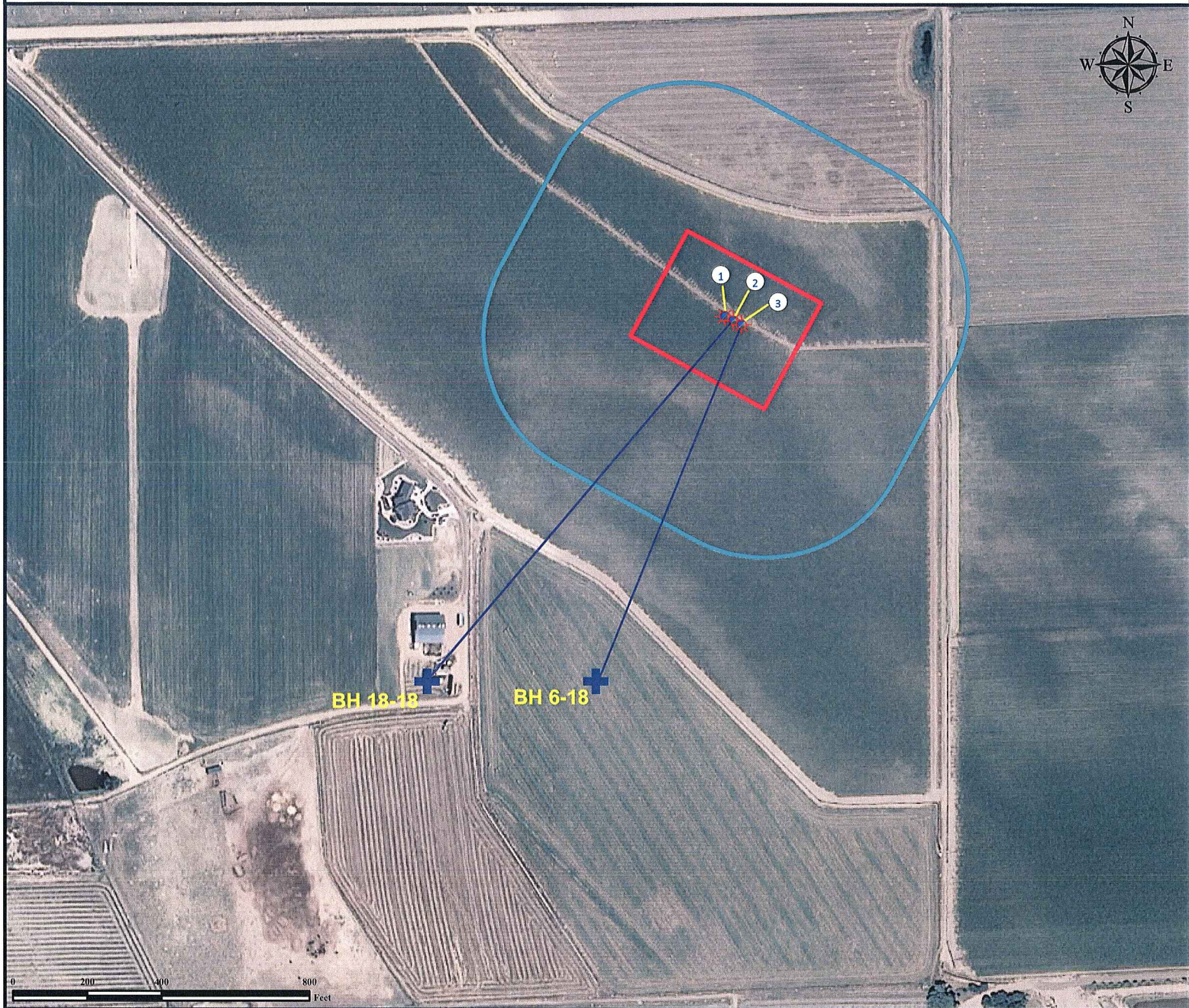


# Bottom Hole Locations

## WALKER-SHANDS 18-18

### Multi Well Pad

SECTION 18, TOWNSHIP 6 NORTH, RANGE 66 WEST OF THE 6TH PRINCIPAL MERIDIAN



1. Proposed Well WALKER-SHANDS 3-18, (Vertical Well).
2. Proposed Well WALKER-SHANDS 18-18.
3. Proposed Well WALKER-SHANDS 6-18.

#### Legend

-  Proposed Well
-  Disturbance Area
-  400' Radius

-  Bottom Holes
-  Concrete Ditch/Canal
-  Ditch/Canal

#### Reference Location

\*\* All Measurements are Made from Reference Well  
WALKER-SHANDS 18-18 (NAD83) \*\*  
LAT: 40.492278° LONG: -104.823923°  
Surface Use: Irrigated Crop



Use our resources to find yours!  
[www.petro-fs.com](http://www.petro-fs.com)  
(303) 928-7128

Field Date: 06/16/2010  
Drafting Date: 08/05/2010  
Drafter: KLM  
Checked By: BHF

Data Sources:  
- Aerial courtesy of NAIP (2009)

Prepared for:  
 **BAYSWATER**  
EXPLORATION AND PRODUCTION, LLC