

ENSIGN

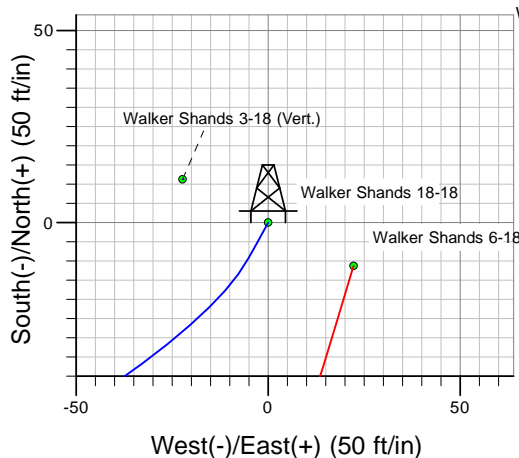
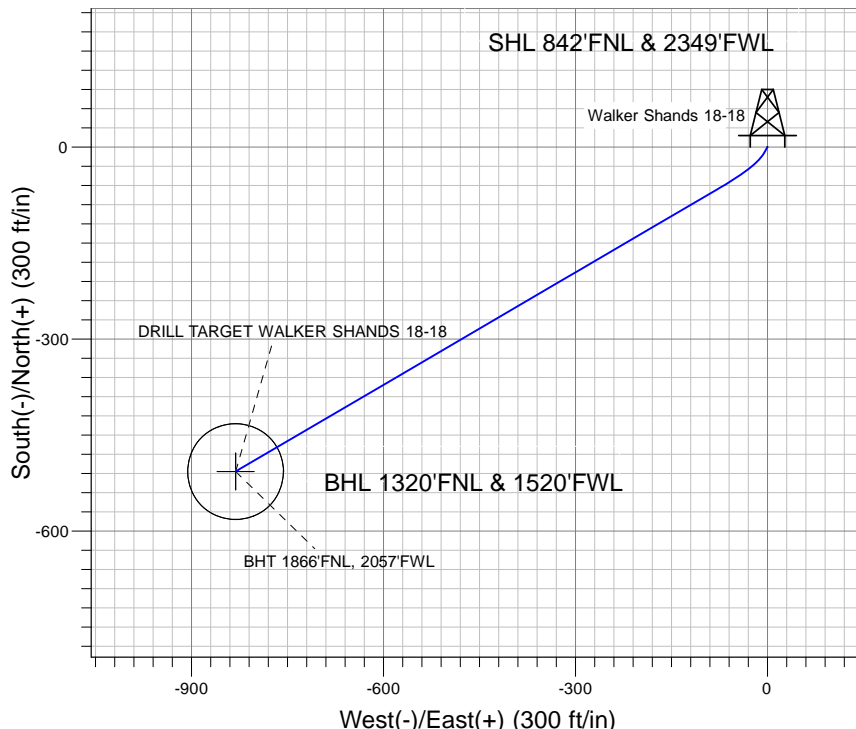
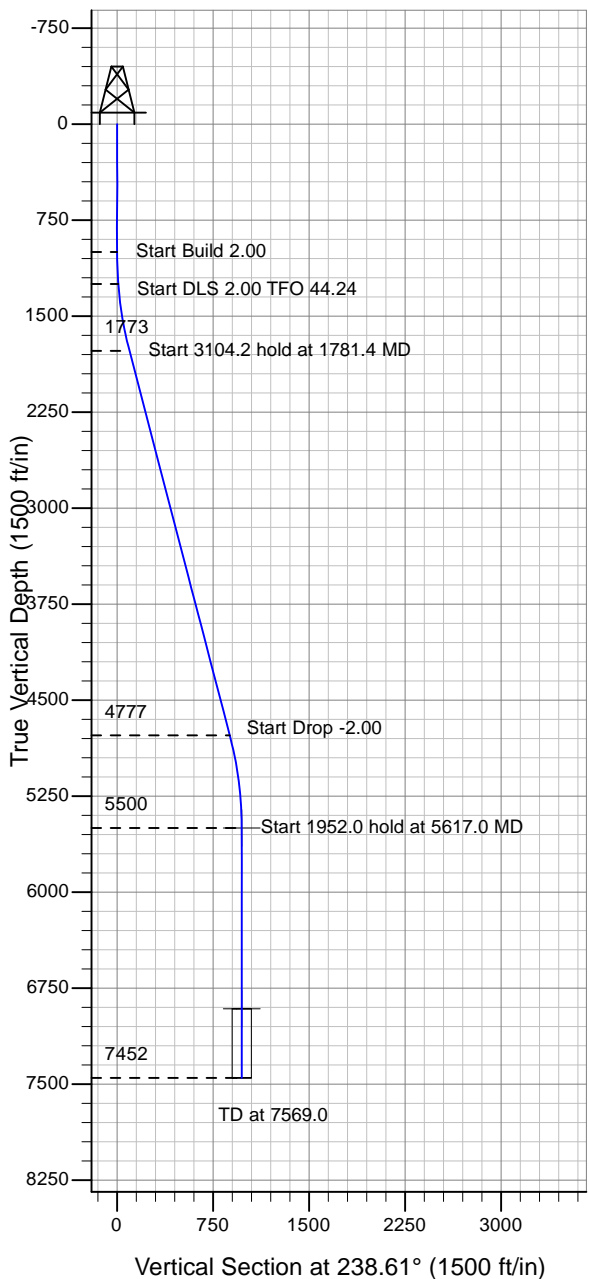
Directional

Well Name: Walker Shands 18-18

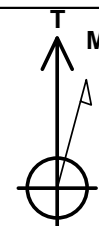
Surface Location: Walker Shands 18-18 Pad Sec.18-T6N-R66W
 North American Datum 1983 , US State Plane 1983 , Colorado Northern Zone
 Ground Elevation: 4852.0

+N/-S+E/-W Northing Easting Latitude Longitude Slot
 0.0 0.0 1422894.13 3188036.32 40° 29' 32.201 N 104° 49' 26.123 W
 Original Well Elev WELL @ 4862.0ft (Original Well Elev)

BAYSWATER EXPLORATION & PRODUCTION



Walker Shands 18-18 Pad Sec.18-T6N-R66W
 Walker Shands 18-18
 Plan#1 (7-28-10)
 14:02, August 09 2010



Azimuths to True North
 Magnetic North: 9.02°

Magnetic Field
 Strength: 53262.8snT
 Dip Angle: 67.14°
 Date: 8/9/2010
 Model: IGRF2010

WELLBORE TARGET DETAILS (LAT/LONG)

Name	TVD	+N/-S	+E/-W	Latitude	Longitude	Shape
DRILL TARGET WALKER SHANDS 18-18	5500.0	-507.1	-831.1	40° 29' 27.190 N	104° 49' 36.880 W	Point
BHT 1866'FNL, 2057'FWL	6912.0	-507.1	-831.1	40° 29' 27.190 N	104° 49' 36.880 W	Circle (Radius: 75.0)

SECTION DETAILS

Sec	MD	Inc	Azi	TVD	+N/-S	+E/-W	DLeg	TFace	VSec	Target
1	0.0	0.00	0.00	0.0	0.0	0.0	0.00	0.00	0.0	
2	1000.0	0.00	0.00	1000.0	0.0	0.0	0.00	0.00	0.0	
3	1250.0	5.00	209.00	1249.7	-9.5	-5.3	2.00	209.00	9.5	
4	1781.4	14.63	239.63	1773.0	-63.9	-74.6	2.00	44.24	97.0	
5	4885.6	14.63	239.63	4776.5	-460.2	-751.0	0.00	0.00	880.7	
6	5617.0	0.00	0.00	5500.0	-507.1	-831.1	2.00	180.00	973.6	DRILL TARGET WALKER SHANDS 18-18
7	7569.0	0.00	0.00	7452.0	-507.1	-831.1	0.00	0.00	973.6	



BAYSWATER EXPLORATION & PRODUCTION

SEC.18-T6N-R66W

Walker Shands 18-18 Pad Sec.18-T6N-R66W

Walker Shands 18-18

Wellbore #1

Plan: Plan#1 (7-28-10)

Standard Planning Report

09 August, 2010

Database:	EDM den0-adp01 Server Data	Local Co-ordinate Reference:	Well Walker Shands 18-18
Company:	BAYSWATER EXPLORATION & PRODUCTION	TVD Reference:	WELL @ 4862.0ft (Original Well Elev)
Project:	SEC.18-T6N-R66W	MD Reference:	WELL @ 4862.0ft (Original Well Elev)
Site:	Walker Shands 18-18 Pad Sec.18-T6N-R66W	North Reference:	True
Well:	Walker Shands 18-18	Survey Calculation Method:	Minimum Curvature
Wellbore:	Wellbore #1		
Design:	Plan#1 (7-28-10)		

Project	SEC.18-T6N-R66W		
Map System:	US State Plane 1983	System Datum:	Mean Sea Level
Geo Datum:	North American Datum 1983		Using Well Reference Point
Map Zone:	Colorado Northern Zone		Using geodetic scale factor

Site		Walker Shands 18-18 Pad Sec.18-T6N-R66W			
Site Position:		Northing:	1,422,894.15 ft	Latitude:	40° 29' 32.201 N
From:	Lat/Long	Easting:	3,188,036.32 ft	Longitude:	104° 49' 26.123 W
Position Uncertainty:	0.0 ft	Slot Radius:	"	Grid Convergence:	0.44 °

Well	Walker Shands 18-18					
Well Position	+N-S	0.0 ft	Northing:	1,422,894.13 ft	Latitude:	40° 29' 32.201 N
	+E-W	0.0 ft	Easting:	3,188,036.32 ft	Longitude:	104° 49' 26.123 W
Position Uncertainty		0.0 ft	Wellhead Elevation:	ft	Ground Level:	4,852.0 ft

Wellbore	Wellbore #1				
Magnetics	Model Name	Sample Date	Declination (°)	Dip Angle (°)	Field Strength (nT)
	IGRF2010	8/9/2010	9.02	67.14	53,263

Design	Plan#1 (7-28-10)			
Audit Notes:				
Version:	Phase:	PROTOTYPE	Tie On Depth:	0.0
Vertical Section:	Depth From (TVD) (ft)	+N/-S (ft)	+E/-W (ft)	Direction (°)
	0.0	0.0	0.0	238.61

Plan Sections										
Measured Depth (ft)	Inclination (°)	Azimuth (°)	Vertical Depth (ft)	+N/-S (ft)	+E/-W (ft)	Dogleg Rate (°/100ft)	Build Rate (°/100ft)	Turn Rate (°/100ft)	TFO (°)	Target
0.0	0.00	0.00	0.0	0.0	0.0	0.00	0.00	0.00	0.00	
1,000.0	0.00	0.00	1,000.0	0.0	0.0	0.00	0.00	0.00	0.00	
1,250.0	5.00	209.00	1,249.7	-9.5	-5.3	2.00	2.00	0.00	209.00	
1,781.4	14.63	239.63	1,773.0	-63.9	-74.6	2.00	1.81	5.76	44.24	
4,885.6	14.63	239.63	4,776.5	-460.2	-751.0	0.00	0.00	0.00	0.00	
5,617.0	0.00	0.00	5,500.0	-507.1	-831.1	2.00	-2.00	0.00	180.00	DRILL TARGET W/
7,569.0	0.00	0.00	7,452.0	-507.1	-831.1	0.00	0.00	0.00	0.00	

Database:	EDM den0-adp01 Server Data	Local Co-ordinate Reference:	Well Walker Shands 18-18
Company:	BAYSWATER EXPLORATION & PRODUCTION	TVD Reference:	WELL @ 4862.0ft (Original Well Elev)
Project:	SEC.18-T6N-R66W	MD Reference:	WELL @ 4862.0ft (Original Well Elev)
Site:	Walker Shands 18-18 Pad Sec.18-T6N-R66W	North Reference:	True
Well:	Walker Shands 18-18	Survey Calculation Method:	Minimum Curvature
Wellbore:	Wellbore #1		
Design:	Plan#1 (7-28-10)		

Planned Survey									
Measured Depth (ft)	Inclination (°)	Azimuth (°)	Vertical Depth (ft)	+N/-S (ft)	+E/-W (ft)	Vertical Section (ft)	Dogleg Rate (°/100ft)	Build Rate (°/100ft)	Turn Rate (°/100ft)
0.0	0.00	0.00	0.0	0.0	0.0	0.0	0.00	0.00	0.00
40.0	0.00	0.00	40.0	0.0	0.0	0.0	0.00	0.00	0.00
80.0	0.00	0.00	80.0	0.0	0.0	0.0	0.00	0.00	0.00
120.0	0.00	0.00	120.0	0.0	0.0	0.0	0.00	0.00	0.00
160.0	0.00	0.00	160.0	0.0	0.0	0.0	0.00	0.00	0.00
200.0	0.00	0.00	200.0	0.0	0.0	0.0	0.00	0.00	0.00
240.0	0.00	0.00	240.0	0.0	0.0	0.0	0.00	0.00	0.00
280.0	0.00	0.00	280.0	0.0	0.0	0.0	0.00	0.00	0.00
320.0	0.00	0.00	320.0	0.0	0.0	0.0	0.00	0.00	0.00
360.0	0.00	0.00	360.0	0.0	0.0	0.0	0.00	0.00	0.00
400.0	0.00	0.00	400.0	0.0	0.0	0.0	0.00	0.00	0.00
440.0	0.00	0.00	440.0	0.0	0.0	0.0	0.00	0.00	0.00
480.0	0.00	0.00	480.0	0.0	0.0	0.0	0.00	0.00	0.00
520.0	0.00	0.00	520.0	0.0	0.0	0.0	0.00	0.00	0.00
560.0	0.00	0.00	560.0	0.0	0.0	0.0	0.00	0.00	0.00
600.0	0.00	0.00	600.0	0.0	0.0	0.0	0.00	0.00	0.00
640.0	0.00	0.00	640.0	0.0	0.0	0.0	0.00	0.00	0.00
680.0	0.00	0.00	680.0	0.0	0.0	0.0	0.00	0.00	0.00
720.0	0.00	0.00	720.0	0.0	0.0	0.0	0.00	0.00	0.00
760.0	0.00	0.00	760.0	0.0	0.0	0.0	0.00	0.00	0.00
800.0	0.00	0.00	800.0	0.0	0.0	0.0	0.00	0.00	0.00
840.0	0.00	0.00	840.0	0.0	0.0	0.0	0.00	0.00	0.00
880.0	0.00	0.00	880.0	0.0	0.0	0.0	0.00	0.00	0.00
920.0	0.00	0.00	920.0	0.0	0.0	0.0	0.00	0.00	0.00
960.0	0.00	0.00	960.0	0.0	0.0	0.0	0.00	0.00	0.00
1,000.0	0.00	0.00	1,000.0	0.0	0.0	0.0	0.00	0.00	0.00
1,040.0	0.80	209.00	1,040.0	-0.2	-0.1	0.2	2.00	2.00	0.00
1,080.0	1.60	209.00	1,080.0	-1.0	-0.5	1.0	2.00	2.00	0.00
1,120.0	2.40	209.00	1,120.0	-2.2	-1.2	2.2	2.00	2.00	0.00
1,160.0	3.20	209.00	1,159.9	-3.9	-2.2	3.9	2.00	2.00	0.00
1,200.0	4.00	209.00	1,199.8	-6.1	-3.4	6.1	2.00	2.00	0.00
1,240.0	4.80	209.00	1,239.7	-8.8	-4.9	8.7	2.00	2.00	0.00
1,250.0	5.00	209.00	1,249.7	-9.5	-5.3	9.5	2.00	2.00	0.00
1,280.0	5.45	213.41	1,279.6	-11.9	-6.7	11.9	2.00	1.49	14.72
1,320.0	6.08	218.26	1,319.4	-15.1	-9.1	15.6	2.00	1.59	12.11
1,360.0	6.75	222.17	1,359.1	-18.5	-12.0	19.8	2.00	1.68	9.77
1,400.0	7.45	225.36	1,398.8	-22.1	-15.4	24.6	2.00	1.74	7.98
1,440.0	8.16	228.00	1,438.4	-25.8	-19.3	29.9	2.00	1.79	6.61
1,480.0	8.89	230.22	1,478.0	-29.7	-23.8	35.8	2.00	1.82	5.54
1,520.0	9.63	232.10	1,517.5	-33.7	-28.8	42.2	2.00	1.85	4.70
1,560.0	10.38	233.71	1,556.9	-37.9	-34.4	49.1	2.00	1.87	4.03
1,600.0	11.14	235.11	1,596.2	-42.3	-40.5	56.5	2.00	1.89	3.49
1,640.0	11.90	236.33	1,635.3	-46.8	-47.1	64.5	2.00	1.90	3.05
1,680.0	12.67	237.41	1,674.4	-51.4	-54.2	73.0	2.00	1.92	2.69
1,720.0	13.44	238.36	1,713.4	-56.2	-61.8	82.1	2.00	1.93	2.39
1,760.0	14.21	239.21	1,752.2	-61.2	-70.0	91.6	2.00	1.93	2.13
1,781.4	14.63	239.63	1,773.0	-63.9	-74.6	97.0	2.00	1.94	1.96
1,800.0	14.63	239.63	1,791.0	-66.2	-78.7	101.6	0.00	0.00	0.00
1,840.0	14.63	239.63	1,829.7	-71.3	-87.4	111.7	0.00	0.00	0.00
1,880.0	14.63	239.63	1,868.4	-76.5	-96.1	121.8	0.00	0.00	0.00
1,920.0	14.63	239.63	1,907.1	-81.6	-104.8	131.9	0.00	0.00	0.00
1,960.0	14.63	239.63	1,945.8	-86.7	-113.5	142.0	0.00	0.00	0.00
2,000.0	14.63	239.63	1,984.5	-91.8	-122.2	152.1	0.00	0.00	0.00

Database:	EDM den0-adp01 Server Data	Local Co-ordinate Reference:	Well Walker Shands 18-18
Company:	BAYSWATER EXPLORATION & PRODUCTION	TVD Reference:	WELL @ 4862.0ft (Original Well Elev)
Project:	SEC.18-T6N-R66W	MD Reference:	WELL @ 4862.0ft (Original Well Elev)
Site:	Walker Shands 18-18 Pad Sec.18-T6N-R66W	North Reference:	True
Well:	Walker Shands 18-18	Survey Calculation Method:	Minimum Curvature
Wellbore:	Wellbore #1		
Design:	Plan#1 (7-28-10)		

Planned Survey									
Measured Depth (ft)	Inclination (°)	Azimuth (°)	Vertical Depth (ft)	+N/-S (ft)	+E/-W (ft)	Vertical Section (ft)	Dogleg Rate (°/100ft)	Build Rate (°/100ft)	Turn Rate (°/100ft)
2,040.0	14.63	239.63	2,023.2	-96.9	-130.9	162.2	0.00	0.00	0.00
2,080.0	14.63	239.63	2,061.9	-102.0	-139.7	172.3	0.00	0.00	0.00
2,120.0	14.63	239.63	2,100.6	-107.1	-148.4	182.4	0.00	0.00	0.00
2,160.0	14.63	239.63	2,139.3	-112.2	-157.1	192.5	0.00	0.00	0.00
2,200.0	14.63	239.63	2,178.0	-117.3	-165.8	202.6	0.00	0.00	0.00
2,240.0	14.63	239.63	2,216.7	-122.4	-174.5	212.7	0.00	0.00	0.00
2,280.0	14.63	239.63	2,255.4	-127.5	-183.2	222.8	0.00	0.00	0.00
2,320.0	14.63	239.63	2,294.1	-132.6	-192.0	232.9	0.00	0.00	0.00
2,360.0	14.63	239.63	2,332.8	-137.7	-200.7	243.0	0.00	0.00	0.00
2,400.0	14.63	239.63	2,371.5	-142.8	-209.4	253.1	0.00	0.00	0.00
2,440.0	14.63	239.63	2,410.2	-147.9	-218.1	263.2	0.00	0.00	0.00
2,480.0	14.63	239.63	2,448.9	-153.0	-226.8	273.3	0.00	0.00	0.00
2,520.0	14.63	239.63	2,487.6	-158.2	-235.5	283.4	0.00	0.00	0.00
2,560.0	14.63	239.63	2,526.3	-163.3	-244.3	293.5	0.00	0.00	0.00
2,600.0	14.63	239.63	2,565.0	-168.4	-253.0	303.6	0.00	0.00	0.00
2,640.0	14.63	239.63	2,603.7	-173.5	-261.7	313.7	0.00	0.00	0.00
2,680.0	14.63	239.63	2,642.4	-178.6	-270.4	323.8	0.00	0.00	0.00
2,720.0	14.63	239.63	2,681.1	-183.7	-279.1	333.9	0.00	0.00	0.00
2,760.0	14.63	239.63	2,719.8	-188.8	-287.8	344.0	0.00	0.00	0.00
2,800.0	14.63	239.63	2,758.5	-193.9	-296.5	354.1	0.00	0.00	0.00
2,840.0	14.63	239.63	2,797.2	-199.0	-305.3	364.2	0.00	0.00	0.00
2,880.0	14.63	239.63	2,836.0	-204.1	-314.0	374.3	0.00	0.00	0.00
2,920.0	14.63	239.63	2,874.7	-209.2	-322.7	384.4	0.00	0.00	0.00
2,960.0	14.63	239.63	2,913.4	-214.3	-331.4	394.5	0.00	0.00	0.00
3,000.0	14.63	239.63	2,952.1	-219.4	-340.1	404.6	0.00	0.00	0.00
3,040.0	14.63	239.63	2,990.8	-224.5	-348.8	414.7	0.00	0.00	0.00
3,080.0	14.63	239.63	3,029.5	-229.6	-357.6	424.8	0.00	0.00	0.00
3,120.0	14.63	239.63	3,068.2	-234.8	-366.3	434.9	0.00	0.00	0.00
3,160.0	14.63	239.63	3,106.9	-239.9	-375.0	445.0	0.00	0.00	0.00
3,200.0	14.63	239.63	3,145.6	-245.0	-383.7	455.1	0.00	0.00	0.00
3,240.0	14.63	239.63	3,184.3	-250.1	-392.4	465.2	0.00	0.00	0.00
3,280.0	14.63	239.63	3,223.0	-255.2	-401.1	475.3	0.00	0.00	0.00
3,320.0	14.63	239.63	3,261.7	-260.3	-409.9	485.4	0.00	0.00	0.00
3,360.0	14.63	239.63	3,300.4	-265.4	-418.6	495.5	0.00	0.00	0.00
3,400.0	14.63	239.63	3,339.1	-270.5	-427.3	505.6	0.00	0.00	0.00
3,440.0	14.63	239.63	3,377.8	-275.6	-436.0	515.7	0.00	0.00	0.00
3,480.0	14.63	239.63	3,416.5	-280.7	-444.7	525.8	0.00	0.00	0.00
3,520.0	14.63	239.63	3,455.2	-285.8	-453.4	535.9	0.00	0.00	0.00
3,560.0	14.63	239.63	3,493.9	-290.9	-462.1	546.0	0.00	0.00	0.00
3,600.0	14.63	239.63	3,532.6	-296.0	-470.9	556.1	0.00	0.00	0.00
3,640.0	14.63	239.63	3,571.3	-301.1	-479.6	566.2	0.00	0.00	0.00
3,680.0	14.63	239.63	3,610.0	-306.2	-488.3	576.3	0.00	0.00	0.00
3,720.0	14.63	239.63	3,648.7	-311.3	-497.0	586.4	0.00	0.00	0.00
3,760.0	14.63	239.63	3,687.4	-316.5	-505.7	596.5	0.00	0.00	0.00
3,800.0	14.63	239.63	3,726.1	-321.6	-514.4	606.6	0.00	0.00	0.00
3,840.0	14.63	239.63	3,764.8	-326.7	-523.2	616.7	0.00	0.00	0.00
3,880.0	14.63	239.63	3,803.5	-331.8	-531.9	626.8	0.00	0.00	0.00
3,920.0	14.63	239.63	3,842.2	-336.9	-540.6	636.9	0.00	0.00	0.00
3,960.0	14.63	239.63	3,880.9	-342.0	-549.3	647.0	0.00	0.00	0.00
4,000.0	14.63	239.63	3,919.7	-347.1	-558.0	657.1	0.00	0.00	0.00
4,040.0	14.63	239.63	3,958.4	-352.2	-566.7	667.2	0.00	0.00	0.00
4,080.0	14.63	239.63	3,997.1	-357.3	-575.5	677.3	0.00	0.00	0.00
4,120.0	14.63	239.63	4,035.8	-362.4	-584.2	687.4	0.00	0.00	0.00

Database:	EDM den0-adp01 Server Data	Local Co-ordinate Reference:	Well Walker Shands 18-18
Company:	BAYSWATER EXPLORATION & PRODUCTION	TVD Reference:	WELL @ 4862.0ft (Original Well Elev)
Project:	SEC.18-T6N-R66W	MD Reference:	WELL @ 4862.0ft (Original Well Elev)
Site:	Walker Shands 18-18 Pad Sec.18-T6N-R66W	North Reference:	True
Well:	Walker Shands 18-18	Survey Calculation Method:	Minimum Curvature
Wellbore:	Wellbore #1		
Design:	Plan#1 (7-28-10)		

Planned Survey

Measured Depth (ft)	Inclination (°)	Azimuth (°)	Vertical Depth (ft)	+N/-S (ft)	+E/-W (ft)	Vertical Section (ft)	Dogleg Rate (°/100ft)	Build Rate (°/100ft)	Turn Rate (°/100ft)
4,160.0	14.63	239.63	4,074.5	-367.5	-592.9	697.5	0.00	0.00	0.00
4,200.0	14.63	239.63	4,113.2	-372.6	-601.6	707.6	0.00	0.00	0.00
4,240.0	14.63	239.63	4,151.9	-377.7	-610.3	717.7	0.00	0.00	0.00
4,280.0	14.63	239.63	4,190.6	-382.8	-619.0	727.8	0.00	0.00	0.00
4,320.0	14.63	239.63	4,229.3	-387.9	-627.7	737.9	0.00	0.00	0.00
4,360.0	14.63	239.63	4,268.0	-393.1	-636.5	748.0	0.00	0.00	0.00
4,400.0	14.63	239.63	4,306.7	-398.2	-645.2	758.1	0.00	0.00	0.00
4,440.0	14.63	239.63	4,345.4	-403.3	-653.9	768.2	0.00	0.00	0.00
4,480.0	14.63	239.63	4,384.1	-408.4	-662.6	778.3	0.00	0.00	0.00
4,520.0	14.63	239.63	4,422.8	-413.5	-671.3	788.4	0.00	0.00	0.00
4,560.0	14.63	239.63	4,461.5	-418.6	-680.0	798.5	0.00	0.00	0.00
4,600.0	14.63	239.63	4,500.2	-423.7	-688.8	808.6	0.00	0.00	0.00
4,640.0	14.63	239.63	4,538.9	-428.8	-697.5	818.7	0.00	0.00	0.00
4,680.0	14.63	239.63	4,577.6	-433.9	-706.2	828.8	0.00	0.00	0.00
4,720.0	14.63	239.63	4,616.3	-439.0	-714.9	838.9	0.00	0.00	0.00
4,760.0	14.63	239.63	4,655.0	-444.1	-723.6	849.0	0.00	0.00	0.00
4,800.0	14.63	239.63	4,693.7	-449.2	-732.3	859.1	0.00	0.00	0.00
4,840.0	14.63	239.63	4,732.4	-454.3	-741.1	869.2	0.00	0.00	0.00
4,880.0	14.63	239.63	4,771.1	-459.4	-749.8	879.3	0.00	0.00	0.00
4,885.6	14.63	239.63	4,776.5	-460.2	-751.0	880.7	0.00	0.00	0.00
4,920.0	13.94	239.63	4,809.9	-464.4	-758.3	889.2	2.00	-2.00	0.00
4,960.0	13.14	239.63	4,848.8	-469.2	-766.4	898.6	2.00	-2.00	0.00
5,000.0	12.34	239.63	4,887.8	-473.6	-774.0	907.4	2.00	-2.00	0.00
5,040.0	11.54	239.63	4,926.9	-477.8	-781.1	915.7	2.00	-2.00	0.00
5,080.0	10.74	239.63	4,966.2	-481.7	-787.8	923.4	2.00	-2.00	0.00
5,120.0	9.94	239.63	5,005.5	-485.4	-794.0	930.6	2.00	-2.00	0.00
5,160.0	9.14	239.63	5,045.0	-488.7	-799.7	937.2	2.00	-2.00	0.00
5,200.0	8.34	239.63	5,084.5	-491.8	-805.0	943.3	2.00	-2.00	0.00
5,240.0	7.54	239.63	5,124.1	-494.6	-809.7	948.8	2.00	-2.00	0.00
5,280.0	6.74	239.63	5,163.8	-497.1	-814.0	953.8	2.00	-2.00	0.00
5,320.0	5.94	239.63	5,203.6	-499.3	-817.8	958.2	2.00	-2.00	0.00
5,360.0	5.14	239.63	5,243.4	-501.3	-821.2	962.1	2.00	-2.00	0.00
5,400.0	4.34	239.63	5,283.2	-502.9	-824.0	965.4	2.00	-2.00	0.00
5,440.0	3.54	239.63	5,323.1	-504.3	-826.4	968.1	2.00	-2.00	0.00
5,480.0	2.74	239.63	5,363.1	-505.4	-828.3	970.3	2.00	-2.00	0.00
5,520.0	1.94	239.63	5,403.0	-506.3	-829.7	971.9	2.00	-2.00	0.00
5,560.0	1.14	239.63	5,443.0	-506.8	-830.6	973.0	2.00	-2.00	0.00
5,600.0	0.34	239.63	5,483.0	-507.1	-831.1	973.5	2.00	-2.00	0.00
5,617.0	0.00	0.00	5,500.0	-507.1	-831.1	973.6	2.00	-2.00	0.00
DRILL TARGET WALKER SHANDS 18-18									
5,640.0	0.00	0.00	5,523.0	-507.1	-831.1	973.6	0.00	0.00	0.00
5,680.0	0.00	0.00	5,563.0	-507.1	-831.1	973.6	0.00	0.00	0.00
5,720.0	0.00	0.00	5,603.0	-507.1	-831.1	973.6	0.00	0.00	0.00
5,760.0	0.00	0.00	5,643.0	-507.1	-831.1	973.6	0.00	0.00	0.00
5,800.0	0.00	0.00	5,683.0	-507.1	-831.1	973.6	0.00	0.00	0.00
5,840.0	0.00	0.00	5,723.0	-507.1	-831.1	973.6	0.00	0.00	0.00
5,880.0	0.00	0.00	5,763.0	-507.1	-831.1	973.6	0.00	0.00	0.00
5,920.0	0.00	0.00	5,803.0	-507.1	-831.1	973.6	0.00	0.00	0.00
5,960.0	0.00	0.00	5,843.0	-507.1	-831.1	973.6	0.00	0.00	0.00
6,000.0	0.00	0.00	5,883.0	-507.1	-831.1	973.6	0.00	0.00	0.00
6,040.0	0.00	0.00	5,923.0	-507.1	-831.1	973.6	0.00	0.00	0.00
6,080.0	0.00	0.00	5,963.0	-507.1	-831.1	973.6	0.00	0.00	0.00
6,120.0	0.00	0.00	6,003.0	-507.1	-831.1	973.6	0.00	0.00	0.00

Database:	EDM den0-adp01 Server Data	Local Co-ordinate Reference:	Well Walker Shands 18-18
Company:	BAYSWATER EXPLORATION & PRODUCTION	TVD Reference:	WELL @ 4862.0ft (Original Well Elev)
Project:	SEC.18-T6N-R66W	MD Reference:	WELL @ 4862.0ft (Original Well Elev)
Site:	Walker Shands 18-18 Pad Sec.18-T6N-R66W	North Reference:	True
Well:	Walker Shands 18-18	Survey Calculation Method:	Minimum Curvature
Wellbore:	Wellbore #1		
Design:	Plan#1 (7-28-10)		

Planned Survey

Measured Depth (ft)	Inclination (°)	Azimuth (°)	Vertical Depth (ft)	+N/-S (ft)	+E/-W (ft)	Vertical Section (ft)	Dogleg Rate (°/100ft)	Build Rate (°/100ft)	Turn Rate (°/100ft)
6,160.0	0.00	0.00	6,043.0	-507.1	-831.1	973.6	0.00	0.00	0.00
6,200.0	0.00	0.00	6,083.0	-507.1	-831.1	973.6	0.00	0.00	0.00
6,240.0	0.00	0.00	6,123.0	-507.1	-831.1	973.6	0.00	0.00	0.00
6,280.0	0.00	0.00	6,163.0	-507.1	-831.1	973.6	0.00	0.00	0.00
6,320.0	0.00	0.00	6,203.0	-507.1	-831.1	973.6	0.00	0.00	0.00
6,360.0	0.00	0.00	6,243.0	-507.1	-831.1	973.6	0.00	0.00	0.00
6,400.0	0.00	0.00	6,283.0	-507.1	-831.1	973.6	0.00	0.00	0.00
6,440.0	0.00	0.00	6,323.0	-507.1	-831.1	973.6	0.00	0.00	0.00
6,480.0	0.00	0.00	6,363.0	-507.1	-831.1	973.6	0.00	0.00	0.00
6,520.0	0.00	0.00	6,403.0	-507.1	-831.1	973.6	0.00	0.00	0.00
6,560.0	0.00	0.00	6,443.0	-507.1	-831.1	973.6	0.00	0.00	0.00
6,600.0	0.00	0.00	6,483.0	-507.1	-831.1	973.6	0.00	0.00	0.00
6,640.0	0.00	0.00	6,523.0	-507.1	-831.1	973.6	0.00	0.00	0.00
6,680.0	0.00	0.00	6,563.0	-507.1	-831.1	973.6	0.00	0.00	0.00
6,720.0	0.00	0.00	6,603.0	-507.1	-831.1	973.6	0.00	0.00	0.00
6,760.0	0.00	0.00	6,643.0	-507.1	-831.1	973.6	0.00	0.00	0.00
6,800.0	0.00	0.00	6,683.0	-507.1	-831.1	973.6	0.00	0.00	0.00
6,840.0	0.00	0.00	6,723.0	-507.1	-831.1	973.6	0.00	0.00	0.00
6,880.0	0.00	0.00	6,763.0	-507.1	-831.1	973.6	0.00	0.00	0.00
6,920.0	0.00	0.00	6,803.0	-507.1	-831.1	973.6	0.00	0.00	0.00
6,960.0	0.00	0.00	6,843.0	-507.1	-831.1	973.6	0.00	0.00	0.00
7,000.0	0.00	0.00	6,883.0	-507.1	-831.1	973.6	0.00	0.00	0.00
7,029.0	0.00	0.00	6,912.0	-507.1	-831.1	973.6	0.00	0.00	0.00
BHT 1866'FNL, 2057'FWL									
7,040.0	0.00	0.00	6,923.0	-507.1	-831.1	973.6	0.00	0.00	0.00
7,080.0	0.00	0.00	6,963.0	-507.1	-831.1	973.6	0.00	0.00	0.00
7,120.0	0.00	0.00	7,003.0	-507.1	-831.1	973.6	0.00	0.00	0.00
7,160.0	0.00	0.00	7,043.0	-507.1	-831.1	973.6	0.00	0.00	0.00
7,200.0	0.00	0.00	7,083.0	-507.1	-831.1	973.6	0.00	0.00	0.00
7,240.0	0.00	0.00	7,123.0	-507.1	-831.1	973.6	0.00	0.00	0.00
7,280.0	0.00	0.00	7,163.0	-507.1	-831.1	973.6	0.00	0.00	0.00
7,320.0	0.00	0.00	7,203.0	-507.1	-831.1	973.6	0.00	0.00	0.00
7,360.0	0.00	0.00	7,243.0	-507.1	-831.1	973.6	0.00	0.00	0.00
7,400.0	0.00	0.00	7,283.0	-507.1	-831.1	973.6	0.00	0.00	0.00
7,440.0	0.00	0.00	7,323.0	-507.1	-831.1	973.6	0.00	0.00	0.00
7,480.0	0.00	0.00	7,363.0	-507.1	-831.1	973.6	0.00	0.00	0.00
7,520.0	0.00	0.00	7,403.0	-507.1	-831.1	973.6	0.00	0.00	0.00
7,560.0	0.00	0.00	7,443.0	-507.1	-831.1	973.6	0.00	0.00	0.00
7,569.0	0.00	0.00	7,452.0	-507.1	-831.1	973.6	0.00	0.00	0.00

Targets

Target Name	Dip Angle (°)	Dip Dir. (°)	TVD (ft)	+N/-S (ft)	+E/-W (ft)	Northing (ft)	Easting (ft)	Latitude	Longitude
- hit/miss target									
- Shape									
DRILL TARGET WAL	0.00	0.00	5,500.0	-507.1	-831.1	1,422,380.73	3,187,209.14	40° 29' 27.190 N	104° 49' 36.880 W
- plan hits target center									
- Point									
BHT 1866'FNL, 2057'I	0.00	0.00	6,912.0	-507.1	-831.1	1,422,380.73	3,187,209.14	40° 29' 27.190 N	104° 49' 36.880 W
- plan hits target center									
- Circle (radius 75.0)									

Database:	EDM den0-adp01 Server Data	Local Co-ordinate Reference:	Well Walker Shands 18-18
Company:	BAYSWATER EXPLORATION & PRODUCTION	TVD Reference:	WELL @ 4862.0ft (Original Well Elev)
Project:	SEC.18-T6N-R66W	MD Reference:	WELL @ 4862.0ft (Original Well Elev)
Site:	Walker Shands 18-18 Pad Sec.18-T6N-R66W	North Reference:	True
Well:	Walker Shands 18-18	Survey Calculation Method:	Minimum Curvature
Wellbore:	Wellbore #1		
Design:	Plan#1 (7-28-10)		



BAYSWATER EXPLORATION & PRODUCTION

SEC.18-T6N-R66W

Walker Shands 18-18 Pad Sec.18-T6N-R66W

Walker Shands 18-18

Wellbore #1

Plan#1 (7-28-10)

Anticollision Report

09 August, 2010

Company:	BAYSWATER EXPLORATION & PRODUCTION	Local Co-ordinate Reference:	Well Walker Shands 18-18
Project:	SEC.18-T6N-R66W	TVD Reference:	WELL @ 4862.0ft (Original Well Elev)
Reference Site:	Walker Shands 18-18 Pad Sec.18-T6N-R66W	MD Reference:	WELL @ 4862.0ft (Original Well Elev)
Site Error:	0.0ft	North Reference:	True
Reference Well:	Walker Shands 18-18	Survey Calculation Method:	Minimum Curvature
Well Error:	0.0ft	Output errors are at	2.00 sigma
Reference Wellbore	Wellbore #1	Database:	EDM den0-adp01 Server Data
Reference Design:	Plan#1 (7-28-10)	Offset TVD Reference:	Offset Datum

Reference	Plan#1 (7-28-10)		
Filter type:	NO GLOBAL FILTER: Using user defined selection & filtering criteria		
Interpolation Method:	MD Interval 100.0ft	Error Model:	ISCWSA
Depth Range:	Unlimited	Scan Method:	Closest Approach 3D
Results Limited by:	Maximum center-center distance of 2,000.0ft	Error Surface:	Elliptical Conic
Warning Levels Evaluated at:	2.00 Sigma		

Survey Tool Program		Date	8/3/2010		
From (ft)	To (ft)	Survey (Wellbore)	Tool Name	Description	
0.0	7,568.9	Plan#1 (7-28-10) (Wellbore #1)	MWD	MWD - Standard	

Summary							
Site Name	Reference Measured Depth (ft)	Offset Measured Depth (ft)	Distance Between Centres (ft)	Distance Between Ellipses (ft)	Separation Factor	Warning	
Offset Well - Wellbore - Design							
Walker Shands 18-18 Pad Sec.18-T6N-R66W							
Walker Shands 3-18 (Vert.) - Wellbore #1 - Plan#1 (7-28-	1,072.2	1,073.2	24.9	20.4	5.447	CC	
Walker Shands 3-18 (Vert.) - Wellbore #1 - Plan#1 (7-28-	1,100.0	1,101.0	25.0	20.3	5.314	ES	
Walker Shands 3-18 (Vert.) - Wellbore #1 - Plan#1 (7-28-	1,200.0	1,200.8	25.7	20.6	5.033	SF	
Walker Shands 6-18 - Wellbore #1 - Plan#1 (7-28-10)	1,000.0	998.0	24.9	20.7	5.848	CC	
Walker Shands 6-18 - Wellbore #1 - Plan#1 (7-28-10)	1,100.0	1,098.0	25.1	20.4	5.348	ES	
Walker Shands 6-18 - Wellbore #1 - Plan#1 (7-28-10)	1,200.0	1,197.8	26.2	21.1	5.137	SF	

Offset Design		Walker Shands 18-18 Pad Sec.18-T6N-R66W - Walker Shands 3-18 (Vert.) - Wellbore #1 - Plan#1 (7-2E)										Offset Site Error:		0.0 ft
Survey Program: 0-MWD												Offset Well Error:		0.0 ft
Reference		Offset		Semi Major Axis			Distance							
Measured Depth (ft)	Vertical Depth (ft)	Measured Depth (ft)	Vertical Depth (ft)	Reference (ft)	Offset (ft)	Highside Toolface (°)	Offset Wellbore Centre +N/-S (ft)	+E/-W (ft)	Between Centres (ft)	Between Ellipses (ft)	Minimum Separation (ft)	Separation Factor	Warning	
0.0	0.0	1.0	1.0	0.0	0.0	-63.09	11.3	-22.3	25.0	25.0	0.00	N/A		
100.0	100.0	101.0	101.0	0.1	0.1	-63.09	11.3	-22.3	25.0	24.7	0.23	109.920		
200.0	200.0	201.0	201.0	0.3	0.3	-63.09	11.3	-22.3	25.0	24.3	0.68	36.884		
300.0	300.0	301.0	301.0	0.6	0.6	-63.09	11.3	-22.3	25.0	23.8	1.13	22.160		
400.0	400.0	401.0	401.0	0.8	0.8	-63.09	11.3	-22.3	25.0	23.4	1.58	15.837		
500.0	500.0	501.0	501.0	1.0	1.0	-63.09	11.3	-22.3	25.0	22.9	2.03	12.322		
600.0	600.0	601.0	601.0	1.2	1.2	-63.09	11.3	-22.3	25.0	22.5	2.47	10.084		
700.0	700.0	701.0	701.0	1.5	1.5	-63.09	11.3	-22.3	25.0	22.0	2.92	8.533		
800.0	800.0	801.0	801.0	1.7	1.7	-63.09	11.3	-22.3	25.0	21.6	3.37	7.396		
900.0	900.0	901.0	901.0	1.9	1.9	-63.09	11.3	-22.3	25.0	21.1	3.82	6.527		
1,000.0	1,000.0	1,001.0	1,001.0	2.1	2.1	-63.09	11.3	-22.3	25.0	20.7	4.27	5.840		
1,072.2	1,072.2	1,073.2	1,073.2	2.3	2.3	90.00	11.3	-22.3	24.9	20.4	4.58	5.447 CC		
1,100.0	1,100.0	1,101.0	1,101.0	2.3	2.4	91.92	11.3	-22.3	25.0	20.3	4.70	5.314 ES		
1,200.0	1,199.8	1,200.8	1,200.8	2.5	2.6	103.65	11.3	-22.3	25.7	20.6	5.10	5.033 SF		
1,300.0	1,299.5	1,300.5	1,300.5	2.7	2.8	113.68	11.3	-22.3	28.7	23.1	5.52	5.192		
1,400.0	1,398.8	1,399.8	1,399.8	2.9	3.0	122.78	11.3	-22.3	34.1	28.1	5.96	5.719		
1,500.0	1,497.7	1,498.7	1,498.7	3.2	3.3	133.75	11.3	-22.3	43.2	36.8	6.39	6.756		
1,600.0	1,596.2	1,597.2	1,597.2	3.5	3.5	143.14	11.3	-22.3	56.6	49.8	6.81	8.310		
1,700.0	1,693.9	1,694.9	1,694.9	3.8	3.7	150.21	11.3	-22.3	74.2	67.0	7.21	10.288		
1,800.0	1,791.0	1,792.0	1,792.0	4.2	3.9	155.70	11.3	-22.3	95.9	88.3	7.62	12.577		
1,900.0	1,887.7	1,888.7	1,888.7	4.7	4.1	160.67	11.3	-22.3	119.4	111.4	8.06	14.821		

CC - Min centre to center distance or convergent point, SF - min separation factor, ES - min ellipse separation

Company:	BAYSWATER EXPLORATION & PRODUCTION	Local Co-ordinate Reference:	Well Walker Shands 18-18
Project:	SEC.18-T6N-R66W	TVD Reference:	WELL @ 4862.0ft (Original Well Elev)
Reference Site:	Walker Shands 18-18 Pad Sec.18-T6N-R66W	MD Reference:	WELL @ 4862.0ft (Original Well Elev)
Site Error:	0.0ft	North Reference:	True
Reference Well:	Walker Shands 18-18	Survey Calculation Method:	Minimum Curvature
Well Error:	0.0ft	Output errors are at	2.00 sigma
Reference Wellbore	Wellbore #1	Database:	EDM den0-adp01 Server Data
Reference Design:	Plan#1 (7-28-10)	Offset TVD Reference:	Offset Datum

Walker Shands 18-18 Pad Sec.18-T6N-R66W - Walker Shands 3-18 (Vert.) - Wellbore #1 - Plan#1 (7-28)										Offset Site Error:		0.0 ft	
Survey Program: 0-MWD										Offset Well Error:		0.0 ft	
Reference		Offset		Semi Major Axis			Distance						
Measured Depth (ft)	Vertical Depth (ft)	Measured Depth (ft)	Vertical Depth (ft)	Reference (ft)	Offset (ft)	Highside Toolface (°)	Offset Wellbore Centre +N/-S (ft)	+E/-W (ft)	Between Centres (ft)	Between Ellipses (ft)	Minimum Separation (ft)	Separation Factor	Warning
2,000.0	1,984.5	1,985.5	1,985.5	5.1	4.4	164.00	11.3	-22.3	143.6	135.1	8.51	16.883	
2,100.0	2,081.2	2,082.2	2,082.2	5.6	4.6	166.37	11.3	-22.3	168.1	159.1	8.96	18.760	
2,200.0	2,178.0	2,179.0	2,179.0	6.1	4.8	168.14	11.3	-22.3	192.7	183.3	9.42	20.465	
2,300.0	2,274.8	2,275.8	2,275.8	6.6	5.0	169.50	11.3	-22.3	217.5	207.7	9.88	22.014	
2,400.0	2,371.5	2,372.5	2,372.5	7.1	5.2	170.59	11.3	-22.3	242.4	232.1	10.35	23.425	
2,500.0	2,468.3	2,469.3	2,469.3	7.6	5.4	171.48	11.3	-22.3	267.4	256.6	10.82	24.712	
2,600.0	2,565.0	2,566.0	2,566.0	8.1	5.7	172.21	11.3	-22.3	292.4	281.1	11.29	25.890	
2,700.0	2,661.8	2,662.8	2,662.8	8.6	5.9	172.83	11.3	-22.3	317.5	305.7	11.77	26.970	
2,800.0	2,758.5	2,759.5	2,759.5	9.1	6.1	173.35	11.3	-22.3	342.6	330.3	12.25	27.964	
2,900.0	2,855.3	2,856.3	2,856.3	9.6	6.3	173.81	11.3	-22.3	367.7	354.9	12.73	28.881	
3,000.0	2,952.1	2,953.1	2,953.1	10.2	6.5	174.21	11.3	-22.3	392.8	379.6	13.21	29.730	
3,100.0	3,048.8	3,049.8	3,049.8	10.7	6.7	174.56	11.3	-22.3	417.9	404.2	13.70	30.516	
3,200.0	3,145.6	3,146.6	3,146.6	11.2	7.0	174.86	11.3	-22.3	443.1	428.9	14.18	31.247	
3,300.0	3,242.3	3,243.3	3,243.3	11.8	7.2	175.14	11.3	-22.3	468.2	453.6	14.67	31.928	
3,400.0	3,339.1	3,340.1	3,340.1	12.3	7.4	175.39	11.3	-22.3	493.4	478.3	15.15	32.564	
3,500.0	3,435.9	3,436.9	3,436.9	12.8	7.6	175.61	11.3	-22.3	518.6	503.0	15.64	33.159	
3,600.0	3,532.6	3,533.6	3,533.6	13.4	7.8	175.82	11.3	-22.3	543.8	527.7	16.13	33.717	
3,700.0	3,629.4	3,630.4	3,630.4	13.9	8.0	176.00	11.3	-22.3	569.0	552.4	16.62	34.240	
3,800.0	3,726.1	3,727.1	3,727.1	14.4	8.3	176.17	11.3	-22.3	594.2	577.1	17.11	34.732	
3,900.0	3,822.9	3,823.9	3,823.9	15.0	8.5	176.33	11.3	-22.3	619.4	601.8	17.60	35.196	
4,000.0	3,919.7	3,920.7	3,920.7	15.5	8.7	176.47	11.3	-22.3	644.6	626.5	18.09	35.634	
4,100.0	4,016.4	4,017.4	4,017.4	16.1	8.9	176.61	11.3	-22.3	669.8	651.2	18.58	36.048	
4,200.0	4,113.2	4,114.2	4,114.2	16.6	9.1	176.73	11.3	-22.3	695.0	675.9	19.07	36.440	
4,300.0	4,209.9	4,210.9	4,210.9	17.1	9.4	176.84	11.3	-22.3	720.2	700.7	19.57	36.811	
4,400.0	4,306.7	4,307.7	4,307.7	17.7	9.6	176.95	11.3	-22.3	745.4	725.4	20.06	37.163	
4,500.0	4,403.4	4,404.4	4,404.4	18.2	9.8	177.05	11.3	-22.3	770.7	750.1	20.55	37.498	
4,600.0	4,500.2	4,501.2	4,501.2	18.8	10.0	177.14	11.3	-22.3	795.9	774.8	21.05	37.817	
4,700.0	4,597.0	4,598.0	4,598.0	19.3	10.2	177.23	11.3	-22.3	821.1	799.6	21.54	38.120	
4,800.0	4,693.7	4,694.7	4,694.7	19.8	10.4	177.31	11.3	-22.3	846.3	824.3	22.03	38.409	
4,900.0	4,790.5	4,791.5	4,791.5	20.4	10.7	177.39	11.3	-22.3	871.5	849.0	22.54	38.665	
5,000.0	4,887.8	4,888.8	4,888.8	20.7	10.9	177.48	11.3	-22.3	894.6	871.5	23.08	38.761	
5,100.0	4,985.8	4,986.8	4,986.8	21.1	11.1	177.55	11.3	-22.3	914.2	890.6	23.59	38.759	
5,200.0	5,084.5	5,085.5	5,085.5	21.4	11.3	177.61	11.3	-22.3	930.4	906.4	24.06	38.667	
5,300.0	5,183.7	5,184.7	5,184.7	21.6	11.5	177.65	11.3	-22.3	943.2	918.7	24.50	38.492	
5,400.0	5,283.2	5,284.2	5,284.2	21.8	11.8	177.68	11.3	-22.3	952.5	927.6	24.91	38.238	
5,500.0	5,383.1	5,384.1	5,384.1	22.0	12.0	177.70	11.3	-22.3	958.3	933.0	25.28	37.909	
5,600.0	5,483.0	5,484.0	5,484.0	22.1	12.2	177.71	11.3	-22.3	960.7	935.0	25.61	37.508	
5,700.0	5,583.0	5,584.0	5,584.0	22.2	12.4	57.34	11.3	-22.3	960.7	934.7	26.00	36.953	
5,800.0	5,683.0	5,684.0	5,684.0	22.3	12.7	57.34	11.3	-22.3	960.7	934.3	26.40	36.395	
5,900.0	5,783.0	5,784.0	5,784.0	22.5	12.9	57.34	11.3	-22.3	960.7	933.9	26.80	35.851	
6,000.0	5,883.0	5,884.0	5,884.0	22.6	13.1	57.34	11.3	-22.3	960.7	933.5	27.20	35.322	
6,100.0	5,983.0	5,984.0	5,984.0	22.7	13.3	57.34	11.3	-22.3	960.7	933.1	27.60	34.806	
6,200.0	6,083.0	6,084.0	6,084.0	22.8	13.6	57.34	11.3	-22.3	960.7	932.7	28.01	34.304	
6,300.0	6,183.0	6,184.0	6,184.0	22.9	13.8	57.34	11.3	-22.3	960.7	932.3	28.41	33.814	
6,400.0	6,283.0	6,284.0	6,284.0	23.0	14.0	57.34	11.3	-22.3	960.7	931.9	28.82	33.337	
6,500.0	6,383.0	6,384.0	6,384.0	23.2	14.2	57.34	11.3	-22.3	960.7	931.5	29.23	32.872	
6,600.0	6,483.0	6,484.0	6,484.0	23.3	14.5	57.34	11.3	-22.3	960.7	931.1	29.64	32.418	
6,700.0	6,583.0	6,584.0	6,584.0	23.4	14.7	57.34	11.3	-22.3	960.7	930.7	30.05	31.976	
6,800.0	6,683.0	6,684.0	6,684.0	23.5	14.9	57.34	11.3	-22.3	960.7	930.3	30.46	31.544	
6,900.0	6,783.0	6,784.0	6,784.0	23.7	15.1	57.34	11.3	-22.3	960.7	929.8	30.87	31.123	
7,000.0	6,883.0	6,884.0	6,884.0	23.8	15.4	57.34	11.3	-22.3	960.7	929.4	31.28	30.712	

Company:	BAYSWATER EXPLORATION & PRODUCTION	Local Co-ordinate Reference:	Well Walker Shands 18-18
Project:	SEC.18-T6N-R66W	TVD Reference:	WELL @ 4862.0ft (Original Well Elev)
Reference Site:	Walker Shands 18-18 Pad Sec.18-T6N-R66W	MD Reference:	WELL @ 4862.0ft (Original Well Elev)
Site Error:	0.0ft	North Reference:	True
Reference Well:	Walker Shands 18-18	Survey Calculation Method:	Minimum Curvature
Well Error:	0.0ft	Output errors are at	2.00 sigma
Reference Wellbore	Wellbore #1	Database:	EDM den0-adp01 Server Data
Reference Design:	Plan#1 (7-28-10)	Offset TVD Reference:	Offset Datum

Offset Design												Offset Site Error:	0.0 ft
Walker Shands 18-18 Pad Sec.18-T6N-R66W - Walker Shands 3-18 (Vert.) - Wellbore #1 - Plan#1 (7-28-10)												Offset Well Error:	0.0 ft
Survey Program: 0-MWD													
Reference		Offset		Semi Major Axis			Distance						
Measured Depth (ft)	Vertical Depth (ft)	Measured Depth (ft)	Vertical Depth (ft)	Reference (ft)	Offset (ft)	Highside Toolface (°)	Offset Wellbore Centre +N/-S (ft)	+E/-W (ft)	Between Centres (ft)	Between Ellipses (ft)	Minimum Separation (ft)	Separation Factor	Warning
7,100.0	6,983.0	6,984.0	6,984.0	23.9	15.6	57.34	11.3	-22.3	960.7	929.0	31.70	30.311	
7,200.0	7,083.0	7,084.0	7,084.0	24.1	15.8	57.34	11.3	-22.3	960.7	928.6	32.11	29.919	
7,300.0	7,183.0	7,184.0	7,184.0	24.2	16.0	57.34	11.3	-22.3	960.7	928.2	32.53	29.536	
7,400.0	7,283.0	7,284.0	7,284.0	24.3	16.3	57.34	11.3	-22.3	960.7	927.8	32.94	29.163	
7,500.0	7,383.0	7,384.0	7,384.0	24.5	16.5	57.34	11.3	-22.3	960.7	927.4	33.36	28.798	
7,569.0	7,452.0	7,453.0	7,453.0	24.6	16.6	57.34	11.3	-22.3	960.7	927.1	33.65	28.551	

Company:	BAYSWATER EXPLORATION & PRODUCTION	Local Co-ordinate Reference:	Well Walker Shands 18-18
Project:	SEC.18-T6N-R66W	TVD Reference:	WELL @ 4862.0ft (Original Well Elev)
Reference Site:	Walker Shands 18-18 Pad Sec.18-T6N-R66W	MD Reference:	WELL @ 4862.0ft (Original Well Elev)
Site Error:	0.0ft	North Reference:	True
Reference Well:	Walker Shands 18-18	Survey Calculation Method:	Minimum Curvature
Well Error:	0.0ft	Output errors are at	2.00 sigma
Reference Wellbore	Wellbore #1	Database:	EDM den0-adp01 Server Data
Reference Design:	Plan#1 (7-28-10)	Offset TVD Reference:	Offset Datum

Walker Shands 18-18 Pad Sec.18-T6N-R66W - Walker Shands 6-18 - Wellbore #1 - Plan#1 (7-28-10)													Offset Site Error:	0.0 ft
Survey Program: 0-MWD													Offset Well Error:	0.0 ft
Reference		Offset		Semi Major Axis			Distance							Warning
Measured Depth (ft)	Vertical Depth (ft)	Measured Depth (ft)	Vertical Depth (ft)	Reference (ft)	Offset (ft)	Highside Toolface (°)	Offset Wellbore Centre +N/-S (ft)	+E/-W (ft)	Between Centres (ft)	Between Ellipses (ft)	Minimum Separation (ft)	Separation Factor		
0.0	0.0	0.0	0.0	0.0	0.0	116.89	-11.3	22.3	25.0					
100.0	100.0	98.0	98.0	0.1	0.1	116.89	-11.3	22.3	24.9	24.7	0.22	112.122		
200.0	200.0	198.0	198.0	0.3	0.3	116.89	-11.3	22.3	24.9	24.3	0.67	37.249		
300.0	300.0	298.0	298.0	0.6	0.6	116.89	-11.3	22.3	24.9	23.8	1.12	22.290		
400.0	400.0	398.0	398.0	0.8	0.8	116.89	-11.3	22.3	24.9	23.4	1.57	15.903		
500.0	500.0	498.0	498.0	1.0	1.0	116.89	-11.3	22.3	24.9	22.9	2.02	12.361		
600.0	600.0	598.0	598.0	1.2	1.2	116.89	-11.3	22.3	24.9	22.5	2.47	10.110		
700.0	700.0	698.0	698.0	1.5	1.5	116.89	-11.3	22.3	24.9	22.0	2.92	8.552		
800.0	800.0	798.0	798.0	1.7	1.7	116.89	-11.3	22.3	24.9	21.6	3.37	7.410		
900.0	900.0	898.0	898.0	1.9	1.9	116.89	-11.3	22.3	24.9	21.1	3.82	6.537		
1,000.0	1,000.0	998.0	998.0	2.1	2.1	116.89	-11.3	22.3	24.9	20.7	4.27	5.848 CC		
1,100.0	1,100.0	1,098.0	1,098.0	2.3	2.4	-96.09	-11.3	22.3	25.1	20.4	4.69	5.348 ES		
1,200.0	1,199.8	1,197.8	1,197.8	2.5	2.6	-107.53	-11.3	22.3	26.2	21.1	5.09	5.137 SF		
1,300.0	1,299.5	1,297.8	1,297.8	2.7	2.8	-127.02	-12.9	21.8	29.6	24.1	5.48	5.403		
1,400.0	1,398.8	1,398.0	1,397.8	2.9	3.0	-142.06	-17.8	20.3	35.9	30.1	5.86	6.134		
1,500.0	1,497.7	1,498.2	1,497.6	3.2	3.1	-148.27	-26.1	17.8	44.4	38.2	6.25	7.103		
1,600.0	1,596.2	1,598.3	1,597.0	3.5	3.3	-149.64	-37.7	14.3	55.0	48.3	6.69	8.220		
1,700.0	1,693.9	1,698.1	1,695.6	3.8	3.6	-148.58	-52.6	9.8	67.8	60.6	7.18	9.447		
1,800.0	1,791.0	1,797.5	1,793.1	4.2	3.9	-146.09	-70.7	4.3	83.2	75.4	7.75	10.728		
1,900.0	1,887.7	1,896.5	1,889.7	4.7	4.2	-141.59	-91.9	-2.1	99.3	90.8	8.45	11.748		
2,000.0	1,984.5	1,995.2	1,985.1	5.1	4.6	-136.67	-116.3	-9.5	115.4	106.2	9.25	12.479		
2,100.0	2,081.2	2,093.4	2,079.5	5.6	5.0	-132.35	-141.8	-17.2	132.2	122.1	10.12	13.060		
2,200.0	2,178.0	2,191.5	2,174.0	6.1	5.4	-129.01	-167.3	-24.9	149.6	138.5	11.03	13.558		
2,300.0	2,274.8	2,289.7	2,268.4	6.6	5.9	-126.37	-192.8	-32.6	167.3	155.3	11.96	13.985		
2,400.0	2,371.5	2,387.8	2,362.9	7.1	6.4	-124.24	-218.4	-40.3	185.3	172.4	12.91	14.351		
2,500.0	2,468.3	2,486.0	2,457.4	7.6	6.8	-122.49	-243.9	-48.0	203.5	189.7	13.88	14.668		
2,600.0	2,565.0	2,584.1	2,551.8	8.1	7.3	-121.02	-269.4	-55.7	221.9	207.1	14.85	14.942		
2,700.0	2,661.8	2,682.3	2,646.3	8.6	7.8	-119.78	-295.0	-63.4	240.4	224.6	15.83	15.182		
2,800.0	2,758.5	2,780.4	2,740.7	9.1	8.4	-118.72	-320.5	-71.2	259.0	242.2	16.83	15.392		
2,900.0	2,855.3	2,878.6	2,835.2	9.6	8.9	-117.79	-346.0	-78.9	277.7	259.8	17.82	15.579		
3,000.0	2,952.1	2,976.7	2,929.7	10.2	9.4	-116.99	-371.5	-86.6	296.4	277.6	18.82	15.744		
3,100.0	3,048.8	3,074.9	3,024.1	10.7	9.9	-116.28	-397.1	-94.3	315.2	295.3	19.83	15.893		
3,200.0	3,145.6	3,173.1	3,118.6	11.2	10.5	-115.65	-422.6	-102.0	334.0	313.1	20.84	16.026		
3,300.0	3,242.3	3,271.2	3,213.0	11.8	11.0	-115.09	-448.1	-109.7	352.8	331.0	21.85	16.146		
3,400.0	3,339.1	3,369.4	3,307.5	12.3	11.5	-114.58	-473.7	-117.4	371.7	348.8	22.87	16.255		
3,500.0	3,435.9	3,467.5	3,401.9	12.8	12.1	-114.12	-499.2	-125.1	390.6	366.7	23.88	16.354		
3,600.0	3,532.6	3,565.7	3,496.4	13.4	12.6	-113.71	-524.7	-132.9	409.5	384.6	24.90	16.445		
3,700.0	3,629.4	3,663.8	3,590.9	13.9	13.1	-113.33	-550.2	-140.6	428.5	402.6	25.92	16.528		
3,800.0	3,726.1	3,762.0	3,685.3	14.4	13.7	-112.99	-575.8	-148.3	447.4	420.5	26.95	16.605		
3,900.0	3,822.9	3,860.1	3,779.8	15.0	14.2	-112.67	-601.3	-156.0	466.4	438.4	27.97	16.675		
4,000.0	3,919.7	3,958.3	3,874.2	15.5	14.8	-112.37	-626.8	-163.7	485.4	456.4	29.00	16.741		
4,100.0	4,016.4	4,056.4	3,968.7	16.1	15.3	-112.10	-652.4	-171.4	504.4	474.4	30.02	16.801		
4,200.0	4,113.2	4,154.6	4,063.2	16.6	15.8	-111.85	-677.9	-179.1	523.4	492.4	31.05	16.858		
4,300.0	4,209.9	4,252.7	4,157.6	17.1	16.4	-111.62	-703.4	-186.8	542.4	510.4	32.08	16.910		
4,400.0	4,306.7	4,350.9	4,252.1	17.7	16.9	-111.40	-728.9	-194.6	561.5	528.4	33.11	16.959		
4,500.0	4,403.4	4,449.0	4,346.5	18.2	17.5	-111.20	-754.5	-202.3	580.5	546.4	34.14	17.005		
4,600.0	4,500.2	4,547.2	4,441.0	18.8	18.0	-111.01	-780.0	-210.0	599.5	564.4	35.17	17.048		
4,700.0	4,597.0	4,645.3	4,535.5	19.3	18.6	-110.83	-805.5	-217.7	618.6	582.4	36.20	17.089		
4,800.0	4,693.7	4,743.5	4,629.9	19.8	19.1	-110.66	-831.1	-225.4	637.7	600.4	37.23	17.127		
4,900.0	4,790.5	4,841.6	4,724.4	20.4	19.7	-110.55	-856.6	-233.1	656.7	618.4	38.26	17.165		
5,000.0	4,887.8	4,939.9	4,818.9	20.7	20.2	-110.57	-882.1	-240.8	675.0	635.8	39.17	17.233		

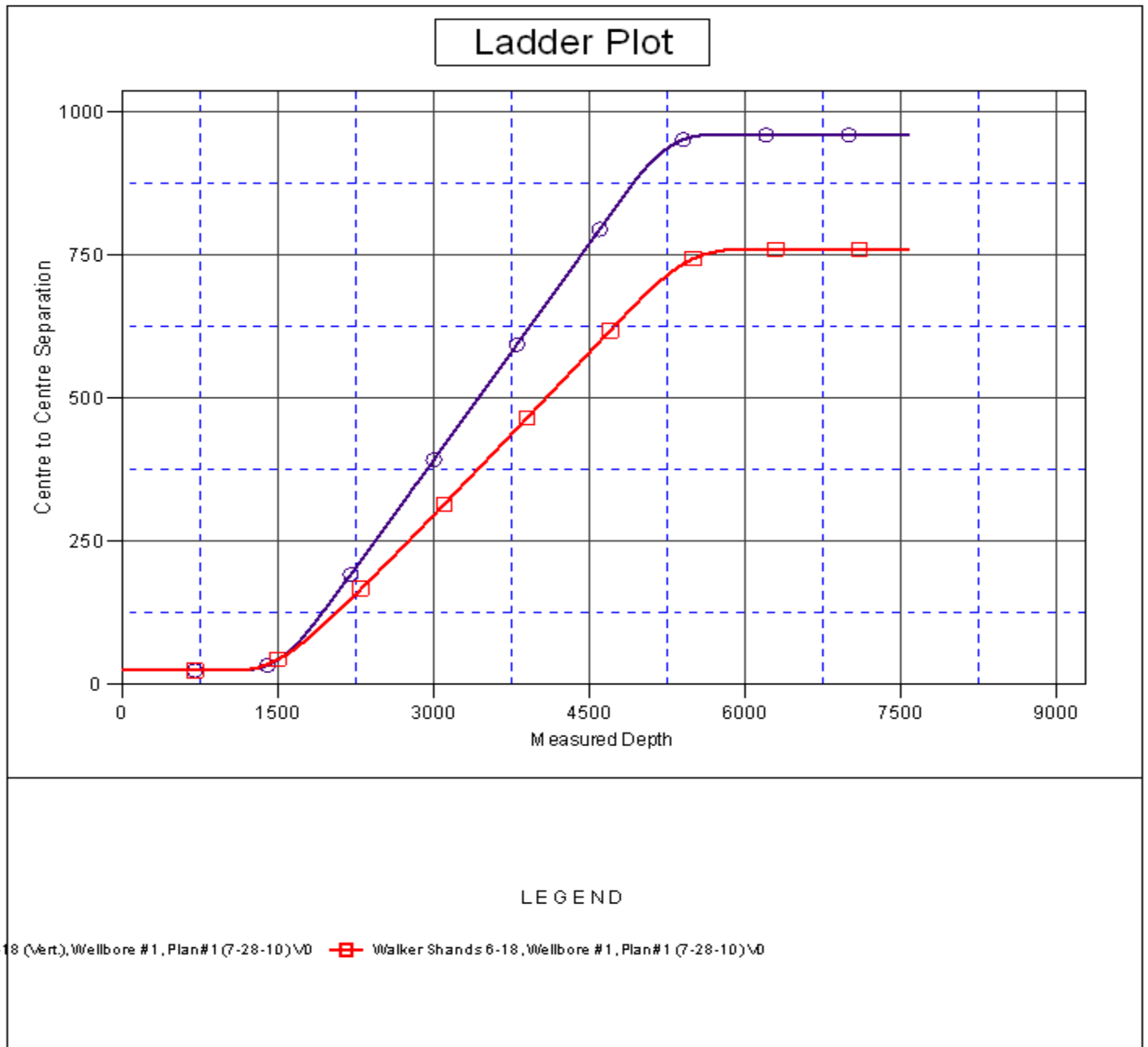
CC - Min centre to center distance or covergent point, SF - min separation factor, ES - min ellipse separation

Company:	BAYSWATER EXPLORATION & PRODUCTION	Local Co-ordinate Reference:	Well Walker Shands 18-18
Project:	SEC.18-T6N-R66W	TVD Reference:	WELL @ 4862.0ft (Original Well Elev)
Reference Site:	Walker Shands 18-18 Pad Sec.18-T6N-R66W	MD Reference:	WELL @ 4862.0ft (Original Well Elev)
Site Error:	0.0ft	North Reference:	True
Reference Well:	Walker Shands 18-18	Survey Calculation Method:	Minimum Curvature
Well Error:	0.0ft	Output errors are at	2.00 sigma
Reference Wellbore	Wellbore #1	Database:	EDM den0-adp01 Server Data
Reference Design:	Plan#1 (7-28-10)	Offset TVD Reference:	Offset Datum

Offset Design Walker Shands 18-18 Pad Sec.18-T6N-R66W - Walker Shands 6-18 - Wellbore #1 - Plan#1 (7-28-10)													Offset Site Error:	0.0 ft
Survey Program: 0-MWD													Offset Well Error:	0.0 ft
Reference		Offset		Semi Major Axis			Distance							Warning
Measured Depth (ft)	Vertical Depth (ft)	Measured Depth (ft)	Vertical Depth (ft)	Reference (ft)	Offset (ft)	Highside Toolface (°)	Offset Wellbore Centre +N/-S (ft)	Offset Wellbore Centre +E/-W (ft)	Between Centres (ft)	Between Ellipses (ft)	Minimum Separation (ft)	Separation Factor		
5,100.0	4,985.8	5,038.1	4,913.5	21.1	20.8	-110.31	-907.7	-248.6	692.1	652.1	40.03	17.288		
5,200.0	5,084.5	5,136.3	5,008.0	21.4	21.3	-109.79	-933.2	-256.3	708.2	667.3	40.85	17.335		
5,300.0	5,183.7	5,243.8	5,111.8	21.6	21.8	-109.03	-959.8	-264.3	722.7	681.1	41.55	17.395		
5,400.0	5,283.2	5,353.9	5,219.2	21.8	22.2	-108.25	-983.1	-271.3	734.8	692.7	42.11	17.450		
5,500.0	5,383.1	5,464.9	5,328.3	22.0	22.5	-107.47	-1,002.7	-277.2	744.3	701.8	42.58	17.481		
5,600.0	5,483.0	5,576.9	5,439.0	22.1	22.8	-106.67	-1,018.2	-281.9	751.4	708.4	42.96	17.489		
5,700.0	5,583.0	5,689.6	5,551.2	22.2	23.1	133.76	-1,029.7	-285.4	756.2	712.9	43.28	17.472		
5,800.0	5,683.0	5,803.2	5,664.4	22.3	23.3	134.28	-1,037.0	-287.6	759.3	715.7	43.56	17.429		
5,900.0	5,783.0	5,917.1	5,778.4	22.5	23.4	134.49	-1,040.0	-288.5	760.5	716.7	43.82	17.357		
6,000.0	5,883.0	6,019.8	5,881.0	22.6	23.5	134.49	-1,040.1	-288.5	760.6	716.5	44.05	17.266		
6,100.0	5,983.0	6,119.8	5,981.0	22.7	23.6	134.49	-1,040.1	-288.5	760.6	716.3	44.27	17.179		
6,200.0	6,083.0	6,219.8	6,081.0	22.8	23.7	134.49	-1,040.1	-288.5	760.6	716.1	44.50	17.091		
6,300.0	6,183.0	6,319.8	6,181.0	22.9	23.8	134.49	-1,040.1	-288.5	760.6	715.8	44.73	17.002		
6,400.0	6,283.0	6,419.8	6,281.0	23.0	23.9	134.49	-1,040.1	-288.5	760.6	715.6	44.97	16.913		
6,500.0	6,383.0	6,519.8	6,381.0	23.2	24.0	134.49	-1,040.1	-288.5	760.6	715.4	45.21	16.824		
6,600.0	6,483.0	6,619.8	6,481.0	23.3	24.2	134.49	-1,040.1	-288.5	760.6	715.1	45.45	16.735		
6,700.0	6,583.0	6,719.8	6,581.0	23.4	24.3	134.49	-1,040.1	-288.5	760.6	714.9	45.69	16.646		
6,800.0	6,683.0	6,819.8	6,681.0	23.5	24.4	134.49	-1,040.1	-288.5	760.6	714.6	45.94	16.556		
6,900.0	6,783.0	6,919.8	6,781.0	23.7	24.5	134.49	-1,040.1	-288.5	760.6	714.4	46.19	16.466		
7,000.0	6,883.0	7,019.8	6,881.0	23.8	24.6	134.49	-1,040.1	-288.5	760.6	714.1	46.44	16.377		
7,100.0	6,983.0	7,119.8	6,981.0	23.9	24.7	134.49	-1,040.1	-288.5	760.6	713.9	46.70	16.287		
7,200.0	7,083.0	7,219.8	7,081.0	24.1	24.8	134.49	-1,040.1	-288.5	760.6	713.6	46.96	16.197		
7,300.0	7,183.0	7,319.8	7,181.0	24.2	24.9	134.49	-1,040.1	-288.5	760.6	713.3	47.22	16.107		
7,400.0	7,283.0	7,419.8	7,281.0	24.3	25.1	134.49	-1,040.1	-288.5	760.6	713.1	47.48	16.017		
7,500.0	7,383.0	7,519.8	7,381.0	24.5	25.2	134.49	-1,040.1	-288.5	760.6	712.8	47.75	15.927		
7,569.0	7,452.0	7,588.8	7,450.0	24.6	25.3	134.49	-1,040.1	-288.5	760.6	712.6	47.94	15.865		

Company:	BAYSWATER EXPLORATION & PRODUCTION	Local Co-ordinate Reference:	Well Walker Shands 18-18
Project:	SEC.18-T6N-R66W	TVD Reference:	WELL @ 4862.0ft (Original Well Elev)
Reference Site:	Walker Shands 18-18 Pad Sec.18-T6N-R66W	MD Reference:	WELL @ 4862.0ft (Original Well Elev)
Site Error:	0.0ft	North Reference:	True
Reference Well:	Walker Shands 18-18	Survey Calculation Method:	Minimum Curvature
Well Error:	0.0ft	Output errors are at	2.00 sigma
Reference Wellbore	Wellbore #1	Database:	EDM den0-adp01 Server Data
Reference Design:	Plan#1 (7-28-10)	Offset TVD Reference:	Offset Datum

Reference Depths are relative to WELL @ 4862.0ft (Original Well Elev) Coordinates are relative to: Walker Shands 18-18
Offset Depths are relative to Offset Datum
Central Meridian is 105° 30' 0.000 W °
Coordinate System is US State Plane 1983, Colorado Northern Zone
Grid Convergence at Surface is: 0.44°



Company:	BAYSWATER EXPLORATION & PRODUCTION	Local Co-ordinate Reference:	Well Walker Shands 18-18
Project:	SEC.18-T6N-R66W	TVD Reference:	WELL @ 4862.0ft (Original Well Elev)
Reference Site:	Walker Shands 18-18 Pad Sec.18-T6N-R66W	MD Reference:	WELL @ 4862.0ft (Original Well Elev)
Site Error:	0.0ft	North Reference:	True
Reference Well:	Walker Shands 18-18	Survey Calculation Method:	Minimum Curvature
Well Error:	0.0ft	Output errors are at	2.00 sigma
Reference Wellbore	Wellbore #1	Database:	EDM den0-adp01 Server Data
Reference Design:	Plan#1 (7-28-10)	Offset TVD Reference:	Offset Datum

Reference Depths are relative to WELL @ 4862.0ft (Original Well Elev) Coordinates are relative to: Walker Shands 18-18
Offset Depths are relative to Offset Datum Coordinate System is US State Plane 1983, Colorado Northern Zone
Central Meridian is 105° 30' 0.000 W ° Grid Convergence at Surface is: 0.44°

