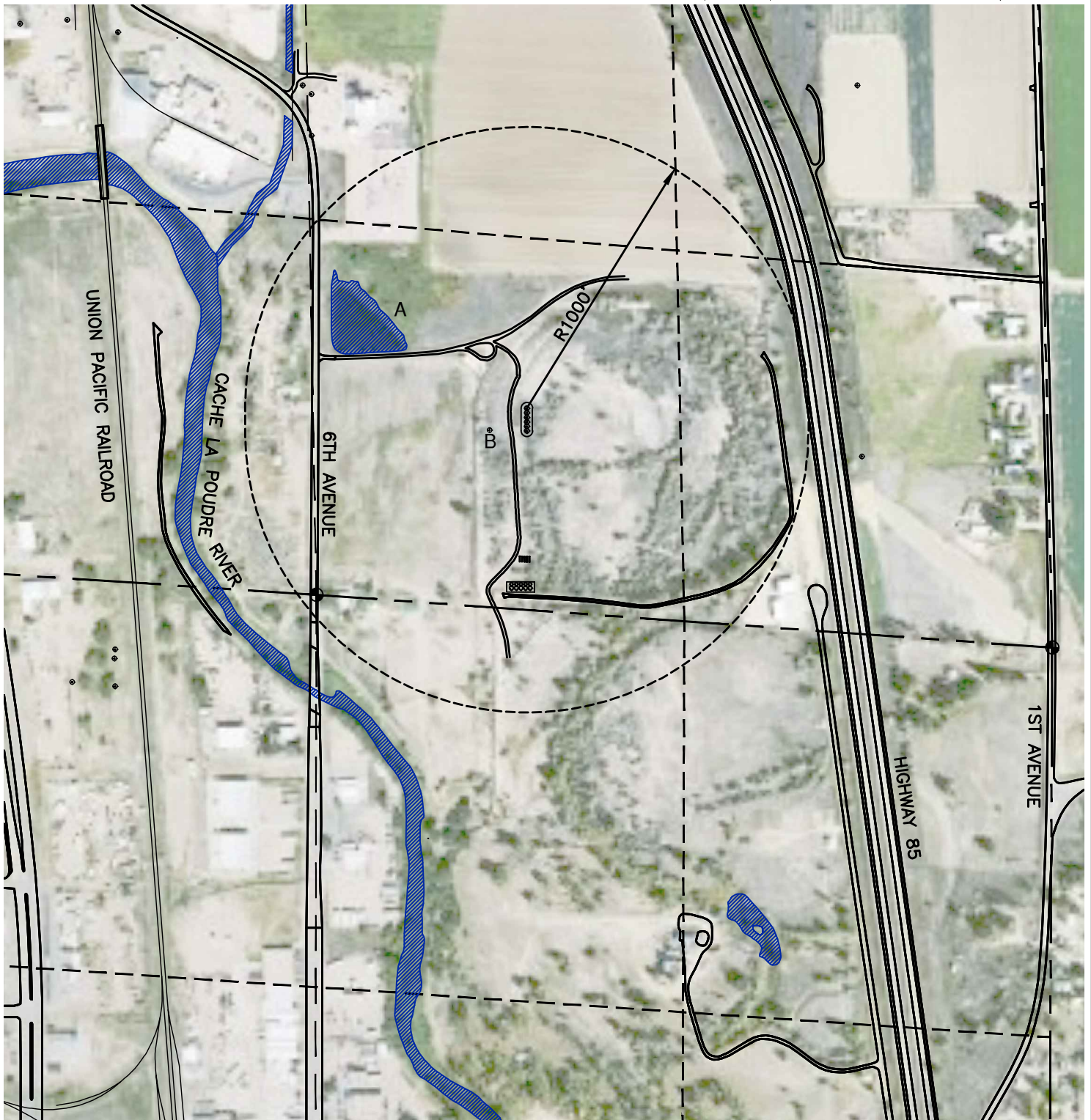


## SURFACE WATER

- A. EXISTING POND - 485' N58°W
- B. EXISTING WATER WELL - 150' N89°W

## LOCATION

SW1/4 SE1/4 SEC 32, T6N, R65W



**LAMP RYNEARSON**  
& ASSOCIATES

4715 Innovation Drive  
Fort Collins, CO 80525  
www.LRA-Inc.com  
970.226.0342 | P  
970.226.0879 | F

## HYDROLOGY MAP

drawn by: EKM  
designer: DDH  
job number-tasks: 0209021.00  
date: 10/12/2009  
scale: 1" = 500'  
file name: