

---

**BILL BARRETT CORPORATION E-BILL**

---

**MILLER 14B-31-691  
MAMM CREEK  
Garfield County , Colorado**

**Cement Surface Casing  
30-Jul-2010**

**Post Job Report**

## The Road to Excellence Starts with Safety

<b>Sold To #:</b> 343492		<b>Ship To #:</b> 2798144		<b>Quote #:</b>		<b>Sales Order #:</b> 7534543	
<b>Customer:</b> BILL BARRETT CORPORATION E-BILL				<b>Customer Rep:</b> South, Jodi			
<b>Well Name:</b> MILLER			<b>Well #:</b> 14B-31-691			<b>API/UWI #:</b> 05-045-19544	
<b>Field:</b> MAMM CREEK		<b>City (SAP):</b> SILT		<b>County/Parish:</b> Garfield			<b>State:</b> Colorado
<b>Lat:</b> N 39.481 deg. OR N 39 deg. 28 min. 52.338 secs.				<b>Long:</b> W 107.601 deg. OR W -108 deg. 23 min. 56.281 secs.			
<b>Contractor:</b> PROPETRO			<b>Rig/Platform Name/Num:</b> PRO PETRO				
<b>Job Purpose:</b> Cement Surface Casing							
<b>Well Type:</b> Development Well			<b>Job Type:</b> Cement Surface Casing				
<b>Sales Person:</b> METLI, MARSHALL			<b>Srvc Supervisor:</b> KUKUS, CRAIG			<b>MBU ID Emp #:</b> 369124	

### Job Personnel

HES Emp Name	Exp Hrs	Emp #	HES Emp Name	Exp Hrs	Emp #	HES Emp Name	Exp Hrs	Emp #
KUKUS, CRAIG A	4	369124	MUHLESTEIN, RYAN Herrick	4	453609	PHILLIPS, MARK Bejar	4	445272

### Equipment

HES Unit #	Distance-1 way	HES Unit #	Distance-1 way	HES Unit #	Distance-1 way	HES Unit #	Distance-1 way
10567589C	120 mile	10783493	120 mile	10822007	120 mile	10829469	120 mile
10995027	120 mile						

### Job Hours

Date	On Location Hours	Operating Hours	Date	On Location Hours	Operating Hours	Date	On Location Hours	Operating Hours
7/30/10	4	1						

**TOTAL** Total is the sum of each column separately

### Job

Formation Name	Job	Job Times
Formation Depth (MD)	Top Bottom	Date Time Time Zone
Form Type	BHST	On Location 30 - Jul - 2010 02:00 MST
Job depth MD	790. ft	Job Started 30 - Jul - 2010 04:00 MST
Water Depth	Wk Ht Above Floor 3. ft	Job Completed 30 - Jul - 2010 05:37 MST
Perforation Depth (MD)	From To	Departed Loc 30 - Jul - 2010 06:30 MST

### Well Data

Description	New / Used	Max pressure psig	Size in	ID in	Weight lbm/ft	Thread	Grade	Top MD ft	Bottom MD ft	Top TVD ft	Bottom TVD ft
-------------	------------	-------------------	---------	-------	---------------	--------	-------	-----------	--------------	------------	---------------

### Sales/Rental/3<sup>rd</sup> Party (HES)

Description	Qty	Qty uom	Depth	Supplier
PLUG,CMTG,TOP,9 5/8,HWE,8.16 MIN/9.06 MA	1	EA		
PORT. DATA ACQUIS. W/OPTICEM RT W/HES	1	EA		
R/A DENSOMETER W/CHART RECORDER,/JOB,ZI	1	JOB		
ADC (AUTO DENSITY CTRL) SYS, /JOB,ZI	1	JOB		

### Tools and Accessories

Type	Size	Qty	Make	Depth	Type	Size	Qty	Make	Depth	Type	Size	Qty	Make
Guide Shoe					Packer					Top Plug	9 5/8	1	HES
Float Shoe					Bridge Plug					Bottom Plug			
Float Collar					Retainer					SSR plug set			
Insert Float										Plug Container			
Stage Tool										Centralizers			

### Miscellaneous Materials

Gelling Agt	Conc	Surfactant	Conc	Acid Type	Qty	Conc	%
Treatment Fld	Conc	Inhibitor	Conc	Sand Type	Size	Qty	

### Fluid Data

Stage/Plug #: 1									
Fluid #	Stage Type	Fluid Name	Qty	Qty uom	Mixing Density lbm/gal	Yield ft3/sk	Mix Fluid Gal/sk	Rate bbl/min	Total Mix Fluid Gal/sk

1	Water Spacer		20.00	bbl	.	.0	.0	.0	
2	Lead Cement	VERSACEM (TM) SYSTEM (452010)	120.0	sacks	12.3	2.38	13.75		13.75
	13.75 Gal	FRESH WATER							
3	Tail Cement	SWIFTCEM (TM) SYSTEM (452990)	120.0	sacks	14.2	1.43	6.88		6.72
	6.715 Gal	FRESH WATER							
4	Displacement		56.00	bbl	.	.0	.0	.0	
<b>Calculated Values</b>		<b>Pressures</b>		<b>Volumes</b>					
Displacement	56.3	Shut In: Instant		Lost Returns	0	Cement Slurry	81.3	Pad	
Top Of Cement	SURFACE	5 Min		Cement Returns	25	Actual Displacement	56.3	Treatment	
Frac Gradient		15 Min		Spacers	20	Load and Breakdown		Total Job	158
<b>Rates</b>									
Circulating		Mixing	4	Displacement	6	Avg. Job		5	
Cement Left In Pipe	Amount	43.75 ft	Reason	Shoe Joint					
Frac Ring # 1 @	ID	Frac ring # 2 @	ID	Frac Ring # 3 @	ID	Frac Ring # 4 @	ID		
The Information Stated Herein Is Correct				Customer Representative Signature					

*The Road to Excellence Starts with Safety*

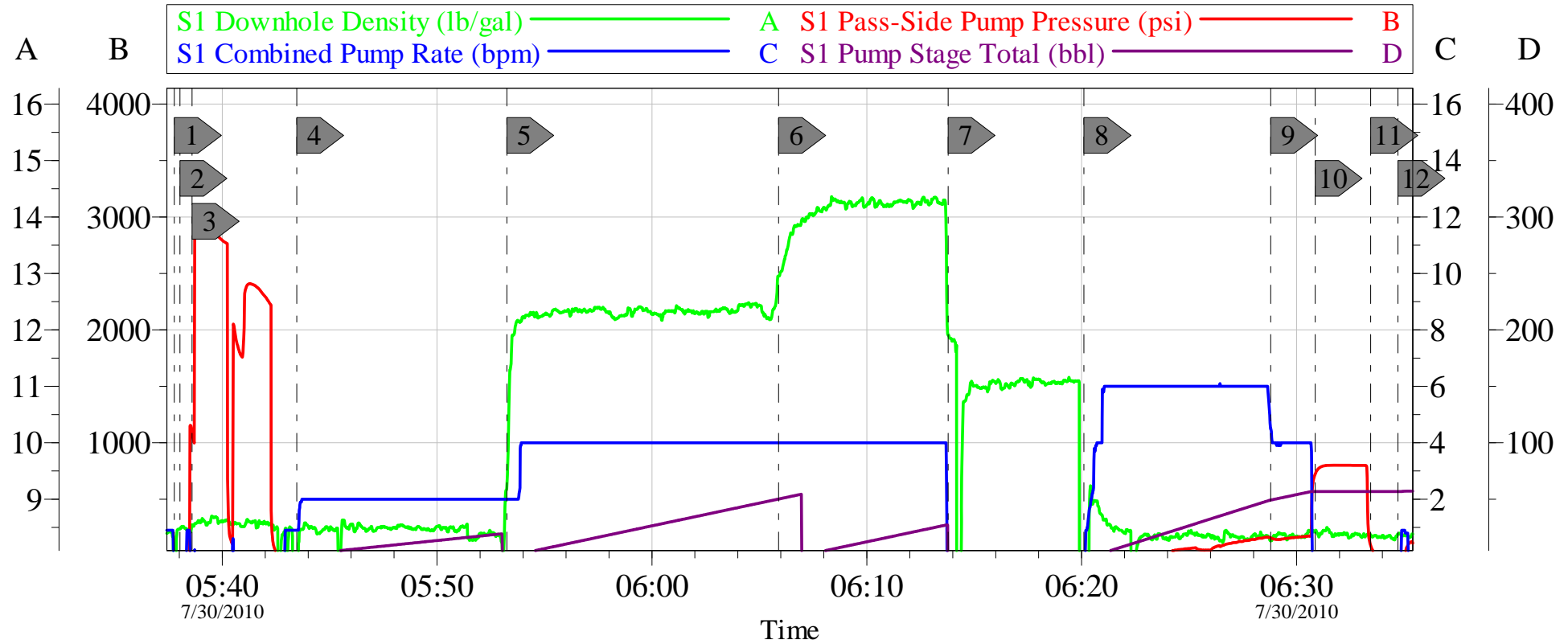
<b>Sold To #:</b> 343492	<b>Ship To #:</b> 2798144	<b>Quote #:</b>	<b>Sales Order #:</b> 7534543
<b>Customer:</b> BILL BARRETT CORPORATION E-BILL		<b>Customer Rep:</b> South, Jodi	
<b>Well Name:</b> MILLER	<b>Well #:</b> 14B-31-691	<b>API/UWI #:</b> 05-045-19544	
<b>Field:</b> MAMM CREEK	<b>City (SAP):</b> SILT	<b>County/Parish:</b> Garfield	<b>State:</b> Colorado
<b>Legal Description:</b>			
<b>Lat:</b> N 39.481 deg. OR N 39 deg. 28 min. 52.338 secs.		<b>Long:</b> W 107.601 deg. OR W -108 deg. 23 min. 56.281 secs.	
<b>Contractor:</b> PROPETRO		<b>Rig/Platform Name/Num:</b> PRO PETRO	
<b>Job Purpose:</b> Cement Surface Casing			<b>Ticket Amount:</b>
<b>Well Type:</b> Development Well		<b>Job Type:</b> Cement Surface Casing	
<b>Sales Person:</b> METLI, MARSHALL		<b>Srv Supervisor:</b> KUKUS, CRAIG	<b>MBU ID Emp #:</b> 369124

Activity Description	Date/Time	Cht #	Rate bbl/min	Volume bbl		Pressure psig		Comments
				Stage	Total	Tubing	Casing	
Call Out	07/30/2010 02:00							
Depart Yard Safety Meeting	07/30/2010 02:10							SAFETY MEETING INVOLVING THE ENTIRE CMT CREW
Arrive At Loc	07/30/2010 04:00							
Assessment Of Location Safety Meeting	07/30/2010 04:15							ASSESSMENT OF LOCATION INVOLVING THE ENTIRE CMT CREW
Pre-Rig Up Safety Meeting	07/30/2010 04:20							SAFETY MEETING INVOLVING THE ENTIRE CMT CREW
Rig-Up Equipment	07/30/2010 04:30							
Circulate Well	07/30/2010 04:30							NONE
Pre-Job Safety Meeting	07/30/2010 05:30							SAFETY MEETING INVOLVING EVERYONE ON LOCATION
Start Job	07/30/2010 05:37							T.D 790 T.P 771.75 S.J43.75 WELL FLUID 8.33 PIPE 9 5/8 36# J-55 HOLE 12 1/4
Other	07/30/2010 05:38		1	2			20.0	FILL LINES
Pressure Test	07/30/2010 05:39		0.5			2500.0		PRESSURE TEST GOOD
Pump Spacer 1	07/30/2010 05:43		2	20			3.0	FRESH WATER SPACER
Pump Lead Cement	07/30/2010 05:53		4	50.8			43.0	PUMP LEAD CMT AT 12.3 PPG 2.38 Y 13.77GAL/SKS120 SKS

Activity Description	Date/Time	Cht #	Rate bbl/ min	Volume bbl		Pressure psig		Comments
				Stage	Total	Tubing	Casing	
Pump Tail Cement	07/30/2010 06:05		4	30.5			80.0	PUMPED TAIL CMT AT 14.2 PPG 1.43 Y 6.85 GAL/SKS 120 SKS
Shutdown	07/30/2010 06:13							DROP PLUG OFF LINE
Drop Top Plug	07/30/2010 06:15							PLUG LEFT THE PLUG CONTAINER
Pump Displacement	07/30/2010 06:20		6	56.3			225.0	PUMPED DISPLACEMENT FRESH WATER
Slow Rate	07/30/2010 06:28		4	46			200.0	SLOW TO 4 BBL MIN LAST 10 BBL
Bump Plug	07/30/2010 06:30		4	56.3			820.0	PLUG LANDED
Check Floats	07/30/2010 06:33							FLOATS HELD / GOT 3/4 BBL BACK
End Job	07/30/2010 06:34							GOT RETURNS AT 15 BBLS INTO TAIL CMT AND RETURNS THRU OUT REST OF THE JOB
Pre-Rig Down Safety Meeting	07/30/2010 06:55							SAFETY MEETING INVOLVING THE ENTIRE CMT CREW
Rig-Down Equipment	07/30/2010 07:00							
Safety Meeting - Departing Location	07/30/2010 07:45							SAFETY MEETING INVOLVING THE ENTIRE CMT CREW
Comment	07/30/2010 08:00							THANK YOU FOR USING HALLIBURTON, CRAIG KUKUS AND CREW

# BARRETT

## SURFACE 9 5/8



### Local Event Log

1	START JOB	05:37:46	2	PRIME LINES	05:38:02
3	TEST LINES	05:38:36	4	PUMP H2O SPACER	05:43:28
5	PUMP LEAD CMT	05:53:15	6	PUMP TAIL CMT	06:05:54
7	SHUT DOWN/DROP PLUG	06:13:47	8	PUMP H2O DISPLACEMENT	06:20:07
9	SLOW RATE	06:28:48	10	BUMP PLUG	06:30:52
11	CHECK FLOATS	06:33:27	12	END JOB	06:34:43

Customer: BARRETT  
Well Description: MILLER 14B-31-691  
Company Rep: JODI SOUTH

Job Date: 30-Jul-2010  
Job Type: SURFACE  
Cement Supervisor: CRAIG KUKUS

Sales Order #: 7534543  
ADC Used: YES  
Elite #/Operator: #3 RYAN MUHLESTEIN

OptiCem v6.4.8  
30-Jul-10 06:53