

BILL BARRETT CORPORATION E-BILL
DO NOT MAIL-1099 18TH ST,STE 2300W
DENVER, Colorado

MILLER
MILLER 33C-6-791

BARRETT/PETRO PLUS

Post Job Summary

Cement Surface Casing

Prepared for:
Date Prepared:
Version: 1

Service Supervisor: SMITH, DUSTIN

Submitted by:

HALLIBURTON

The Road to Excellence Starts with Safety

Sold To #: 343492	Ship To #: 2794299	Quote #:	Sales Order #: 7495397
Customer: BILL BARRETT CORPORATION E-BILL	Customer Rep: South, Jodi		
Well Name: MILLER	Well #: 33C-6-791	API/UWI #: 05-045-18666	
Field: MAMM CREEK	City (SAP): SILT	County/Parish: Garfield	State: Colorado
Lat: N 39.477 deg. OR N 39 deg. 28 min. 36.34 secs.	Long: W 107.595 deg. OR W -108 deg. 24 min. 18.421 secs.		
Contractor: BARRETT	Rig/Platform Name/Num: PETRO PLUS		
Job Purpose: Cement Surface Casing			
Well Type: Development Well	Job Type: Cement Surface Casing		
Sales Person: METLI, MARSHALL	Srv Supervisor: SMITH, DUSTIN	MBU ID Emp #: 418015	

Job Personnel

HES Emp Name	Exp Hrs	Emp #	HES Emp Name	Exp Hrs	Emp #	HES Emp Name	Exp Hrs	Emp #
LEIST, JAMES R	3	362787	SLAUGHTER, JESSE Dean	3	454315	SMITH, DUSTIN Michael	3	418015

Equipment

HES Unit #	Distance-1 way	HES Unit #	Distance-1 way	HES Unit #	Distance-1 way	HES Unit #	Distance-1 way
10296152C	120 mile	10592964	120 mile	10744549	120 mile	10897797	120 mile
11259882	120 mile						

Job Hours

Date	On Location Hours	Operating Hours	Date	On Location Hours	Operating Hours	Date	On Location Hours	Operating Hours
07/14/10	3	2						

TOTAL	Total is the sum of each column separately							
-------	--	--	--	--	--	--	--	--

Job

Formation Name	Formation Depth (MD)	Top	Bottom	Form Type	Job depth MD	Job Depth TVD	Water Depth	Perforation Depth (MD)	From	To	Deparated Loc
				BHST	740. ft	722.6 ft					

Well Data

Description	New / Used	Max pressure psig	Size in	ID in	Weight lbm/ft	Thread	Grade	Top MD ft	Bottom MD ft	Top TVD ft	Bottom TVD ft
-------------	------------	-------------------	---------	-------	---------------	--------	-------	-----------	--------------	------------	---------------

Sales/Rental/3rd Party (HES)

Description	Qty	Qty uom	Depth	Supplier
PLUG,CMTG,TOP,9 5/8,HWE,8.16 MIN/9.06 MA	1	EA		

Tools and Accessories

Type	Size	Qty	Make	Depth	Type	Size	Qty	Make	Depth	Type	Size	Qty	Make
Guide Shoe					Packer					Top Plug	9 5/8	1	
Float Shoe					Bridge Plug					Bottom Plug			
Float Collar					Retainer					SSR plug set			
Insert Float										Plug Container	9 5/8	1	
Stage Tool										Centralizers			

Miscellaneous Materials

Gelling Agt	Conc	Surfactant	Conc	Acid Type	Qty	Conc	%
Treatment Fld	Conc	Inhibitor	Conc	Sand Type	Size	Qty	

Fluid Data

Stage/Plug #: 1	Fluid #	Stage Type	Fluid Name	Qty	Qty uom	Mixing Density lbm/gal	Yield ft3/sk	Mix Fluid Gal/sk	Rate bbl/min	Total Mix Fluid Gal/sk
-----------------	---------	------------	------------	-----	---------	------------------------	--------------	------------------	--------------	------------------------

Stage/Plug #: 1

Stage/Plug #: 1									
Fluid #	Stage Type	Fluid Name	Qty	Qty uom	Mixing Density lbm/gal	Yield ft ³ /sk	Mix Fluid Gal/sk	Rate bbl/min	Total Mix Fluid Gal/sk
1	WATER SPACER		10.00	bbl	.	.0	.0	5.5	
2	Lead Cement	VERSACEM (TM) SYSTEM (452010)	120.0	sacks	12.3	2.38	13.75	6	13.75
		13.75 Gal FRESH WATER							
3	Tail Cement	SWIFTCES (TM) SYSTEM (452990)	120.0	sacks	14.2	1.43	6.88	6	6.72
		6.715 Gal FRESH WATER							
4	DISPLACEMENT		52.4	bbl	.	.0	.0	7.0	
Calculated Values		Pressures		Volumes					
Displacement	52.4	Shut In: Instant		Lost Returns	0	Cement Slurry	75	Pad	
Top Of Cement	SURFACE	5 Min		Cement Returns	30	Actual Displacement	52.4	Treatment	
Frac Gradient		15 Min		Spacers	10	Load and Breakdown		Total Job	
Rates									
Circulating		Mixing	6	Displacement	7	Avg. Job	6.5		
Cement Left In Pipe	Amount	44.7ft	Reason	Shoe Joint					
Frac Ring # 1 @	ID	Frac ring # 2 @	ID	Frac Ring # 3 @	ID	Frac Ring # 4 @	ID		
The Information Stated Herein Is Correct				Customer Representative Signature					

The Road to Excellence Starts with Safety

Sold To #: 343492		Ship To #: 2794299		Quote #:		Sales Order #: 7495397	
Customer: BILL BARRETT CORPORATION E-BILL				Customer Rep: South, Jodi			
Well Name: MILLER			Well #: 33C-6-791			API/UWI #: 05-045-18666	
Field: MAMM CREEK		City (SAP): SILT		County/Parish: Garfield			State: Colorado
Legal Description:							
Lat: N 39.477 deg. OR N 39 deg. 28 min. 36.34 secs.				Long: W 107.595 deg. OR W -108 deg. 24 min. 18.421 secs.			
Contractor: BARRETT			Rig/Platform Name/Num: PETRO PLUS				
Job Purpose: Cement Surface Casing						Ticket Amount:	
Well Type: Development Well			Job Type: Cement Surface Casing				
Sales Person: METLI, MARSHALL			Srvs Supervisor: SMITH, DUSTIN			MBU ID Emp #: 418015	

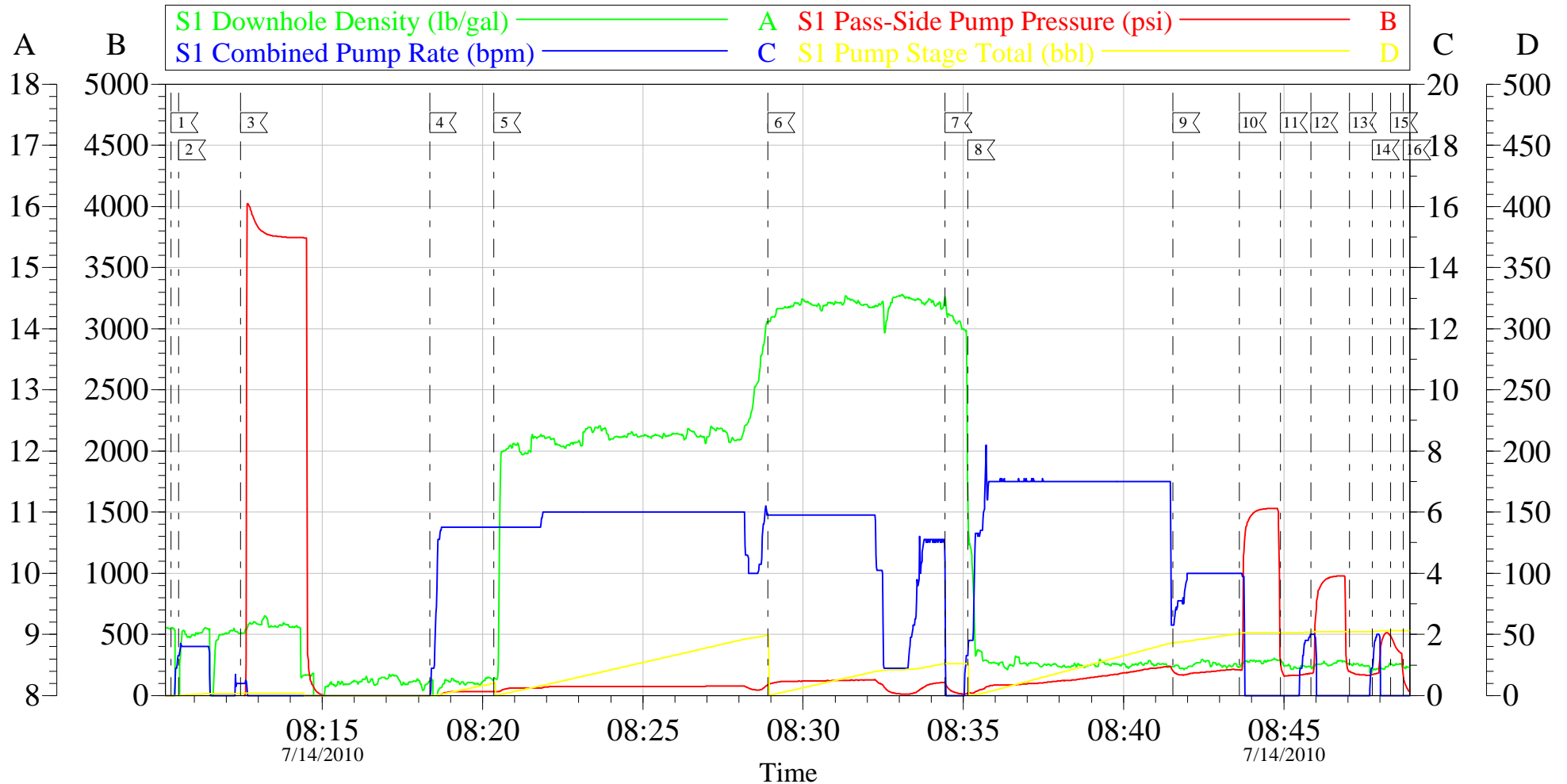
Activity Description	Date/Time	Cht #	Rate bbl/min	Volume bbl		Pressure psig		Comments
				Stage	Total	Tubing	Casing	
Assessment Of Location Safety Meeting	07/14/2010 06:30							ALL HES EMPLOYEES
Pre-Rig Up Safety Meeting	07/14/2010 06:45							ALL HES EMPLOYEES
Rig-Up Equipment	07/14/2010 07:00							RIG UP COMPLETED AT END OF LAST JOB CREW STAYED ON LOCATION ELITE # 9
Pre-Job Safety Meeting	07/14/2010 08:00							ALL HES EMPLOYEES AND RIG CREW
Rig-Up Completed	07/14/2010 08:10							TD: 740 TP: 722.6 SJ: 44.7 9 5/8 36# CSG 12 3/8 OH
Start Job	07/14/2010 08:10							JOB PUMPED OFFLINE, HOLE DRILLED WITH AIR, NO FLUID IN WELLBORE AT TIME OF CEMENT PIPE STATIC AT TIME OF CEMENT JOB NO QUICK LATCH USED ON CEMENT HEAD
Test Lines	07/14/2010 08:12					3750.0		PRESSURE TEST OK
Pump Spacer	07/14/2010 08:18		5.5	10	10		40.0	FRESH WATER
Pump Lead Cement	07/14/2010 08:20		6	50.9	50.9		110.0	120 SKS 12.3 PPG 2.38 YIELD 13.77 GAL/SK
Pump Tail Cement	07/14/2010 08:28		6	30.6	30.6		110.0	120 SKS 14.2 PPG 1.43 YIELD 6.85 GAL/SK
Shutdown	07/14/2010 08:34							
Drop Plug	07/14/2010 08:34							PLUG AWAY NO PROBLEMS
Pump Displacement	07/14/2010 08:35		6	52.4	52.4		240.0	FRESH WATER

Cementing Job Log

Activity Description	Date/Time	Cht #	Rate bbl/min	Volume bbl		Pressure psig		Comments
				Stage	Total	Tubing	Casing	
Slow Rate	07/14/2010 08:41		4	42.4	42.4		185.0	
Bump Plug	07/14/2010 08:45		4	52.4	52.4		1500.0	PRESSURED UP TO 1500 PSI SECOND BUMP PRESSURED UP TO 700
Check Floats	07/14/2010 08:47							FLOATS NOT HOLDING PRESSURED UP CHECKED FLOATS STILL NOT HOLDING PRESSURED UP TO 300 PSI SHUT IN AT 2 INCH
End Job	07/14/2010 08:48							30 BBLS CEMENT TO SURFACE
Pre-Rig Down Safety Meeting	07/14/2010 09:00							ALL HES EMPLOYEES
Rig-Down Completed	07/14/2010 09:30							RIG DOWN AND GET READY FOR NEXT JOB
Comment	07/14/2010 10:00							THANK YOU FOR USING HALLIBURTON DUSTIN SMITH AND CREW

BILL BARRETT

9 5/8 SURFACE



Local Event Log

1 START JOB	08:10:17	2 FILL LINES	08:10:31	3 TEST LINES	08:12:26
4 PUMP SPACER	08:18:21	5 PUMP LEAD CEMENT	08:20:21	6 PUMP TAIL CEMENT	08:28:54
7 SHUTDOWN/ DROP PLUG	08:34:25	8 PUMP DISPLACEMENT	08:35:08	9 SLOW RATE	08:41:32
10 BUMP PLUG	08:43:37	11 CHECK FLOATS	08:44:53	12 BUMP PLUG	08:45:51
13 CHECK FLOATS	08:47:03	14 PRESSURE UP	08:47:46	15 SHUT IN PRESSURE	08:48:20
16 END JOB	08:48:44				

Customer: BILL BARRETT
Well Description: MILLER 33C-6-791
Company Rep: JODI SOUTH

Job Date: 14-Jul-2010
Job Type: SURFACE
Cement Supervisor: DUSTIN SMITH

Sales Order #: 7495397
ADC Used: YES
Elite #: 9 JESSE SLAUGHTER

OptiCem v6.4.8
14-Jul-10 08:58