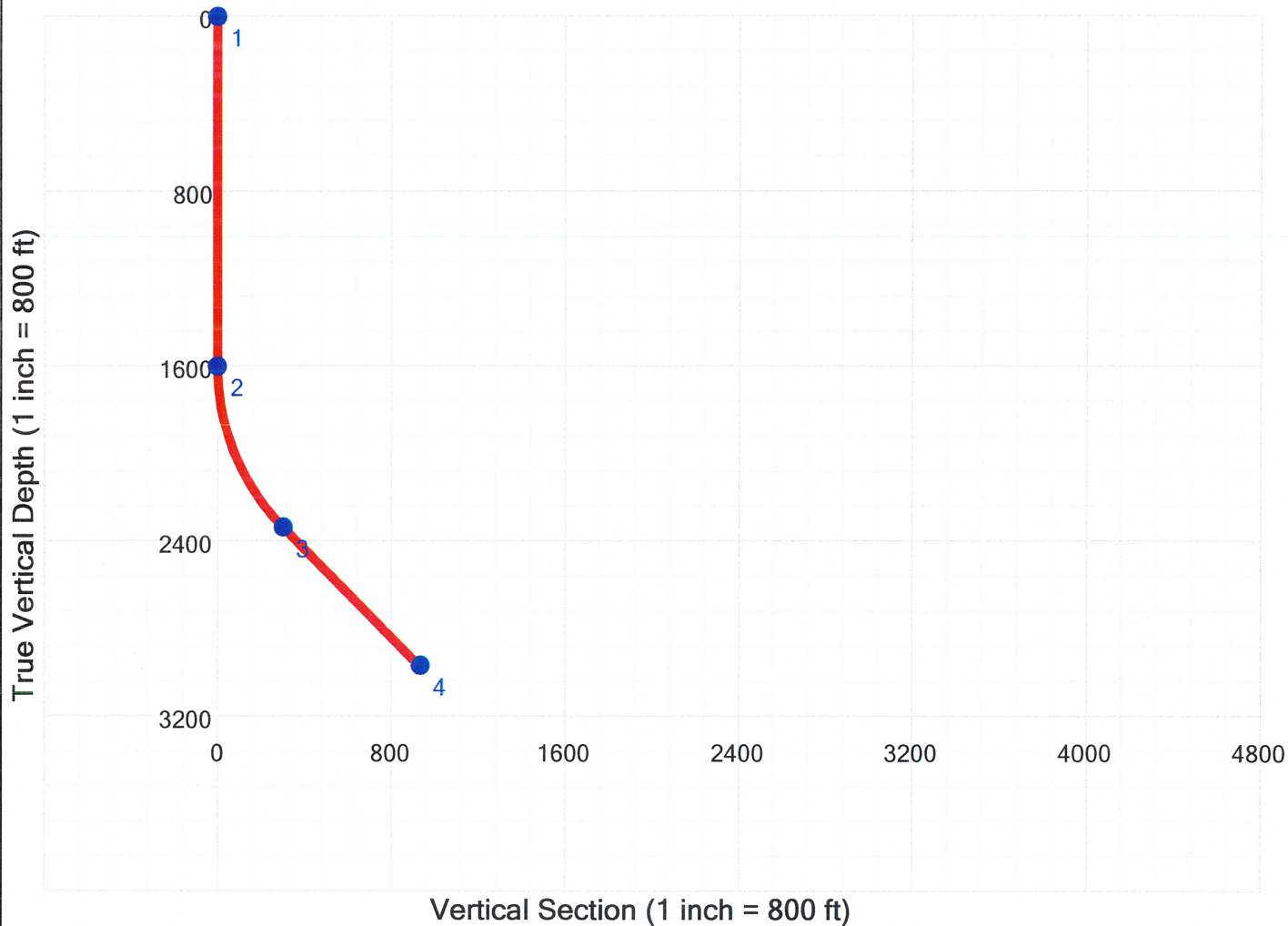
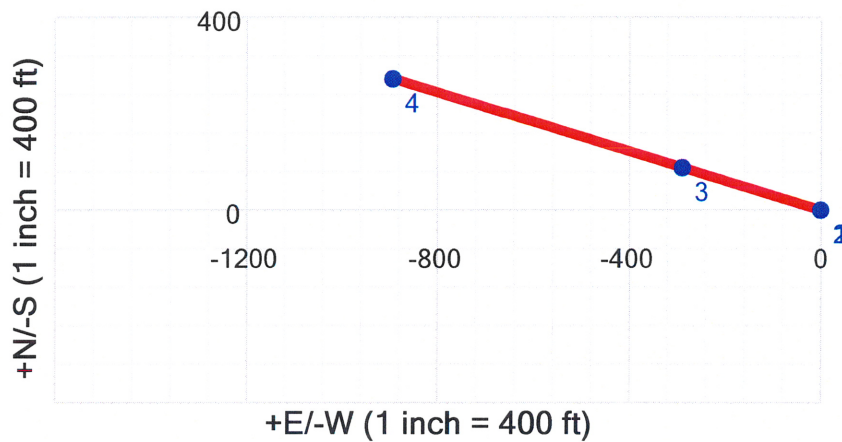


Wall Plot



#	MD	Inc	Azi	TVD	+N/-S	+E/-W	DL	TFO	VS	Comments	Company:	PRO&G
1	0.0	0.00	287.02	0.0	0.0	0.0	0.00	0.00	0.0		Project:	Croaker 11-10_Ver 1
2	1600.0	0.00	287.02	1600.0	0.0	0.0	0.00	0.00	0.0	KOP	Well:	
3	2412.7	44.70	287.02	2332.7	88.2	-288.1	5.51	0.00	301.3	EOB	By:	Moe Felman
4	3310.6	44.70	287.02	2971.0	273.0	-892.0	0.00	0.00	932.8		Date:	8/19/2010
											Vertical section azimuth:	287.02°
											Survey calculation method:	Minimum Curvature
											Units:	Length - ft, Dogleg - °/100ft



Survey

MD	Inclination	Azimuth	Tie-In	TVD	NS	EW	HD	VS@287°	DL	BR	TR	TFO	Comments
0.0	0.00	287.02	1	0.0	0.0	0.0	0.0	0.0	0.00	0.00	0.00	0.00	
100.0	0.00	287.02	0	100.0	0.0	0.0	0.0	0.0	0.00	0.00	0.00	0.00	
200.0	0.00	287.02	0	200.0	0.0	0.0	0.0	0.0	0.00	0.00	0.00	0.00	
300.0	0.00	287.02	0	300.0	0.0	0.0	0.0	0.0	0.00	0.00	0.00	0.00	
400.0	0.00	287.02	0	400.0	0.0	0.0	0.0	0.0	0.00	0.00	0.00	0.00	
500.0	0.00	287.02	0	500.0	0.0	0.0	0.0	0.0	0.00	0.00	0.00	0.00	
600.0	0.00	287.02	0	600.0	0.0	0.0	0.0	0.0	0.00	0.00	0.00	0.00	
700.0	0.00	287.02	0	700.0	0.0	0.0	0.0	0.0	0.00	0.00	0.00	0.00	
800.0	0.00	287.02	0	800.0	0.0	0.0	0.0	0.0	0.00	0.00	0.00	0.00	
900.0	0.00	287.02	0	900.0	0.0	0.0	0.0	0.0	0.00	0.00	0.00	0.00	
1,000.0	0.00	287.02	0	1,000.0	0.0	0.0	0.0	0.0	0.00	0.00	0.00	0.00	
1,100.0	0.00	287.02	0	1,100.0	0.0	0.0	0.0	0.0	0.00	0.00	0.00	0.00	
1,200.0	0.00	287.02	0	1,200.0	0.0	0.0	0.0	0.0	0.00	0.00	0.00	0.00	
1,300.0	0.00	287.02	0	1,300.0	0.0	0.0	0.0	0.0	0.00	0.00	0.00	0.00	
1,400.0	0.00	287.02	0	1,400.0	0.0	0.0	0.0	0.0	0.00	0.00	0.00	0.00	
1,500.0	0.00	287.02	0	1,500.0	0.0	0.0	0.0	0.0	0.00	0.00	0.00	0.00	
1,600.0	0.00	287.02	0	1,600.0	0.0	0.0	0.0	0.0	0.00	0.00	0.00	0.00	
1,700.0	5.50	287.02	0	1,699.8	1.4	-4.6	4.8	4.8	5.50	5.50	0.00	0.00	KOP
1,800.0	11.00	287.02	0	1,798.8	5.6	-18.3	19.1	19.1	5.50	5.50	0.00	0.00	
1,900.0	16.50	287.02	0	1,895.9	12.6	-41.0	42.9	42.9	5.50	5.50	0.00	0.00	
2,000.0	22.00	287.02	0	1,990.2	22.2	-72.5	75.9	75.9	5.50	5.50	0.00	0.00	
2,100.0	27.50	287.02	0	2,081.0	34.5	-112.6	117.7	117.7	5.50	5.50	0.00	0.00	
2,200.0	33.00	287.02	0	2,167.4	49.2	-160.7	168.1	168.1	5.50	5.50	0.00	0.00	
2,300.0	38.50	287.02	0	2,248.5	66.3	-216.5	226.5	226.5	5.50	5.50	0.00	0.00	
2,400.0	44.00	287.02	0	2,323.7	85.6	-279.6	292.4	292.4	5.50	5.50	0.00	0.00	
2,412.7	44.70	287.02	0	2,332.7	88.2	-288.1	301.3	301.3	5.51	5.51	0.00	0.00	EOB
2,500.0	44.70	287.02	0	2,394.8	106.2	-346.8	362.7	362.7	0.00	0.00	0.00	0.00	
2,600.0	44.70	287.02	0	2,465.9	126.7	-414.0	433.0	433.0	0.00	0.00	0.00	0.00	
2,700.0	44.70	287.02	0	2,536.9	147.3	-481.3	503.3	503.3	0.00	0.00	0.00	0.00	
2,800.0	44.70	287.02	0	2,608.0	167.9	-548.6	573.7	573.7	0.00	0.00	0.00	0.00	
2,900.0	44.70	287.02	0	2,679.1	188.5	-615.8	644.0	644.0	0.00	0.00	0.00	0.00	
3,000.0	44.70	287.02	0	2,750.2	209.1	-683.1	714.4	714.4	0.00	0.00	0.00	0.00	
3,100.0	44.70	287.02	0	2,821.3	229.7	-750.3	784.7	784.7	0.00	0.00	0.00	0.00	
3,200.0	44.70	287.02	0	2,892.3	250.3	-817.6	855.0	855.0	0.00	0.00	0.00	0.00	
3,300.0	44.70	287.02	0	2,963.4	270.9	-884.8	925.4	925.4	0.00	0.00	0.00	0.00	
3,310.6	44.70	287.02	0	2,971.0	273.0	-892.0	932.8	932.8	0.00	0.00	0.00	0.00	