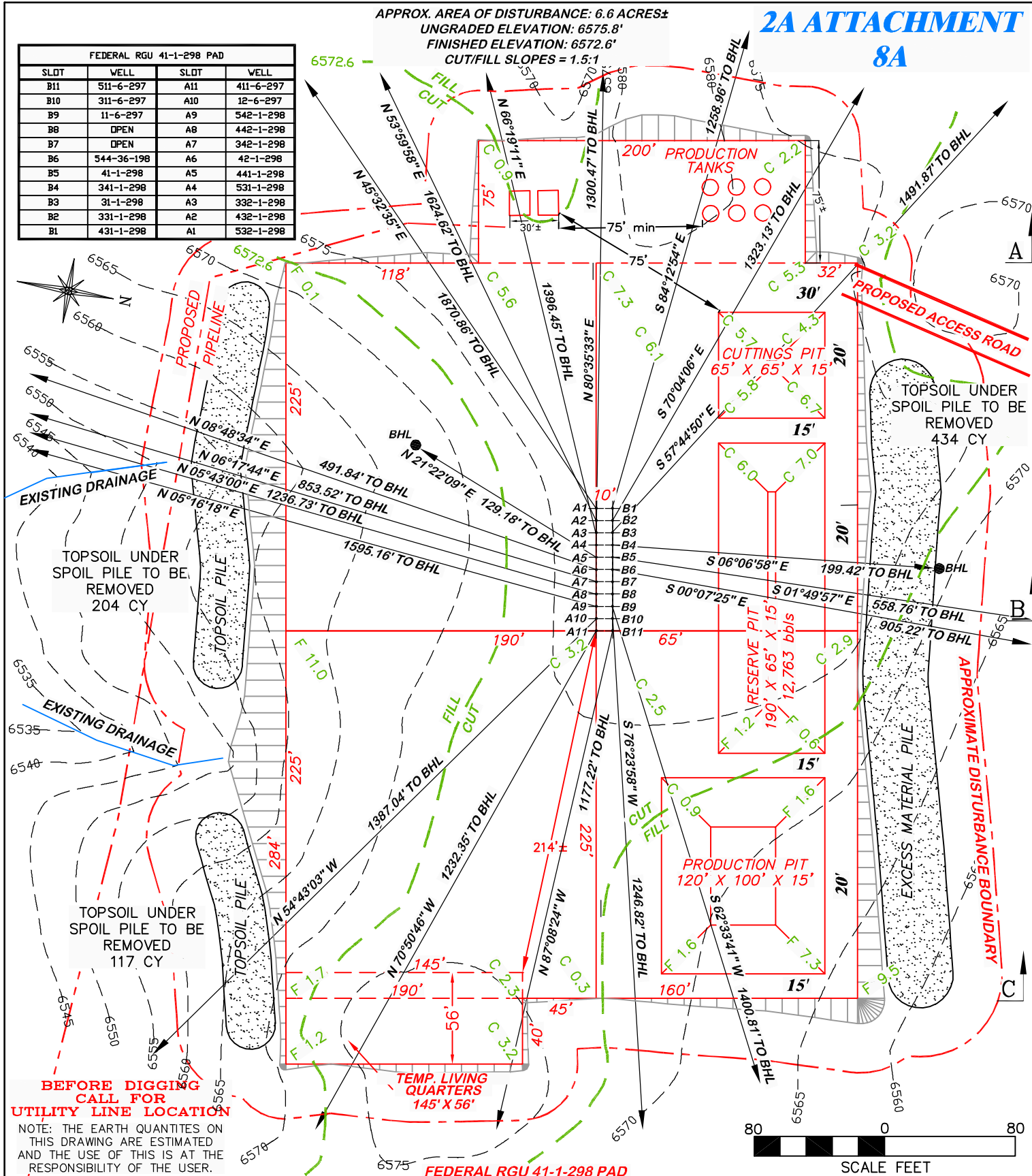


FEDERAL RGU 41-1-298 PAD			
SLOT	WELL	SLOT	WELL
B11	511-6-297	A11	411-6-297
B10	311-6-297	A10	12-6-297
B9	11-6-297	A9	542-1-298
B8	OPEN	A8	442-1-298
B7	OPEN	A7	342-1-298
B6	544-36-198	A6	42-1-298
B5	41-1-298	A5	441-1-298
B4	341-1-298	A4	531-1-298
B3	31-1-298	A3	332-1-298
B2	331-1-298	A2	432-1-298
B1	431-1-298	A1	532-1-298



**BEFORE DIGGING
CALL FOR
UTILITY LINE LOCATION**

NOTE: THE EARTH QUANTITIES ON THIS DRAWING ARE ESTIMATED AND THE USE OF THIS IS AT THE RESPONSIBILITY OF THE USER.

FEDERAL RGU 41-1-298 PAD

SCALE FEET



RIFFIN & ASSOCIATES, INC.
1414 ELK ST., ROCK SPRINGS, WY 82901

(307) 362-5028

DRAWN: 9/14/06 - MMM

SCALE: 1" = 80'

REVISED: 8/18/10 - DEH

DRG JOB No. 14550

REVISED PITS

EXHIBIT 2 - SHEET 1 OF 2

CONSTRUCTION LAYOUT DRAWING 1 OF 3

WILLIAMS PRODUCTION RMT COMPANY

**FEDERAL RGU 31, 41, 42, 331, 332, 341, 342, 411, 431, 432, 441, 442, 532,
542, 544-1-298, 11, 12, 311, 411, 511-6-297
NENE. SECTION 1. T2S. R98W. 6th P.M.**

ESTIMATED EARTHWORK (ALL PITS INCLUDED)

ITEM	CUT (15% EXPN)	FILL	TOPSOIL	EXCESS
PAD	16,181 CY	12,408 CY	3,595 CY	178 CY
PIT	8,753 CY			8,753 CY
TOTALS	24,934 CY	12,408 CY	3,595 CY	8,931 CY

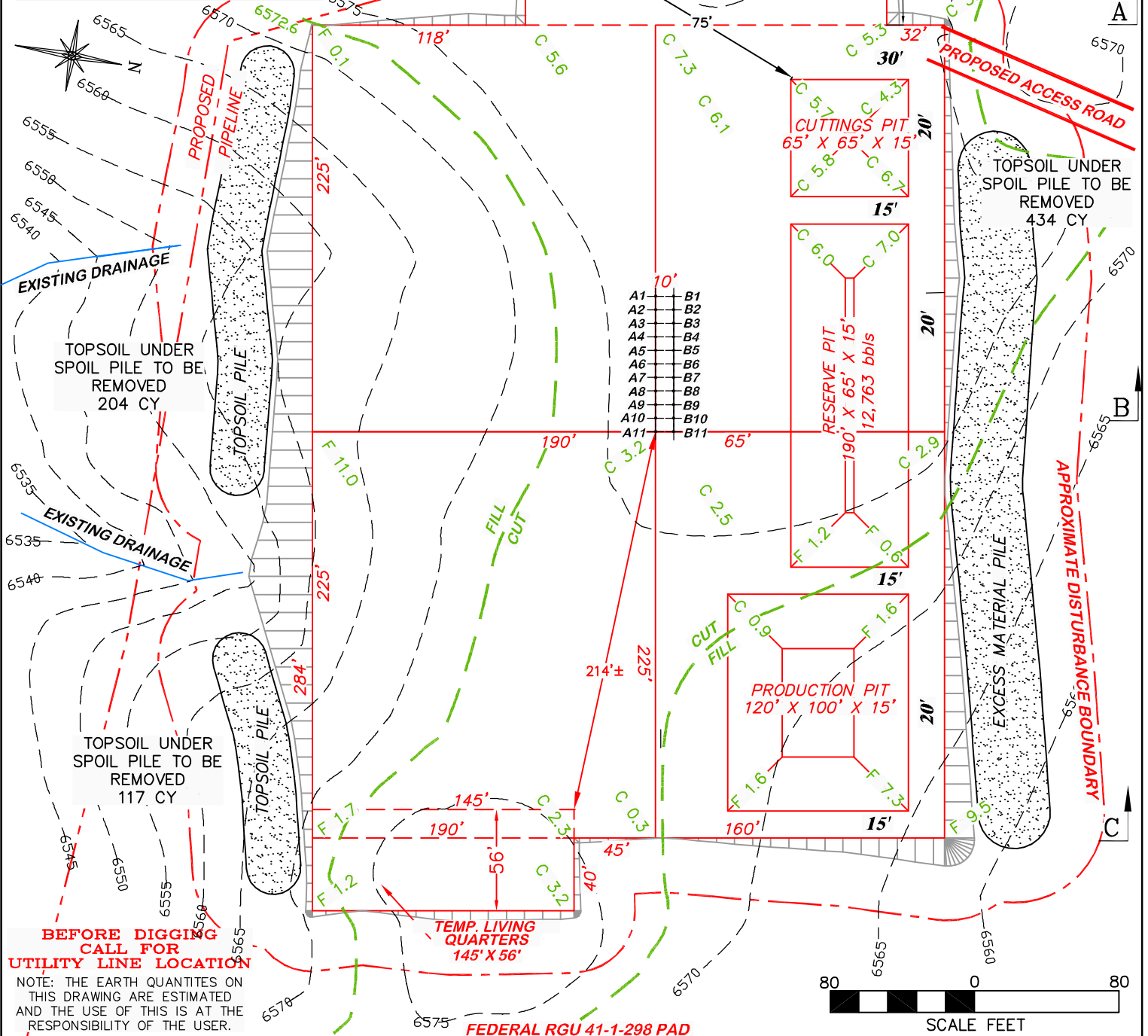
APPROX. AREA OF DISTURBANCE: 6.6 ACRES±

UNGRADED ELEVATION: 6575.8'

FINISHED ELEVATION: 6572.6'

CUT/FILL SLOPES = 1.5:1

FEDERAL RGU 41-1-298 PAD			
SLOT	WELL	SLOT	WELL
B11	511-6-297	A11	411-6-297
B10	311-6-297	A10	12-6-297
B9	11-6-297	A9	542-1-298
B8	OPEN	A8	442-1-298
B7	OPEN	A7	342-1-298
B6	544-36-198	A6	42-1-298
B5	41-1-298	A5	441-1-298
B4	341-1-298	A4	531-1-298
B3	31-1-298	A3	332-1-298
B2	331-1-298	A2	432-1-298
B1	431-1-298	A1	532-1-298



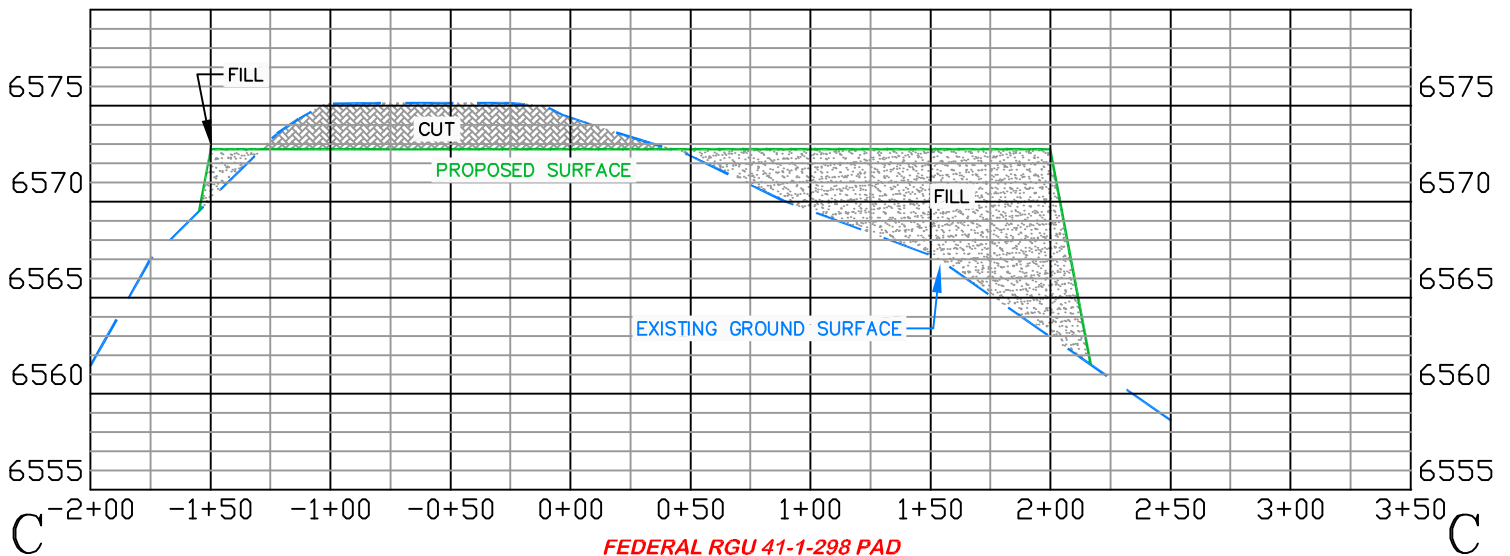
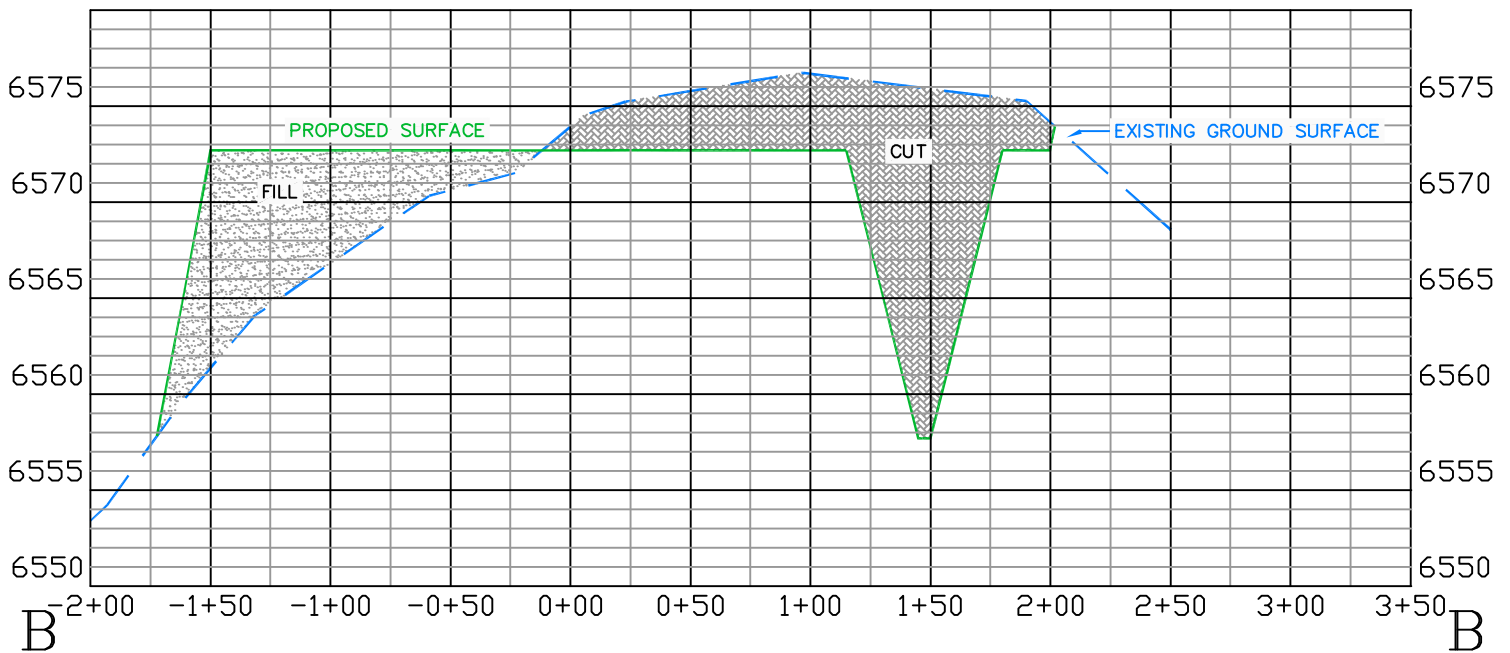
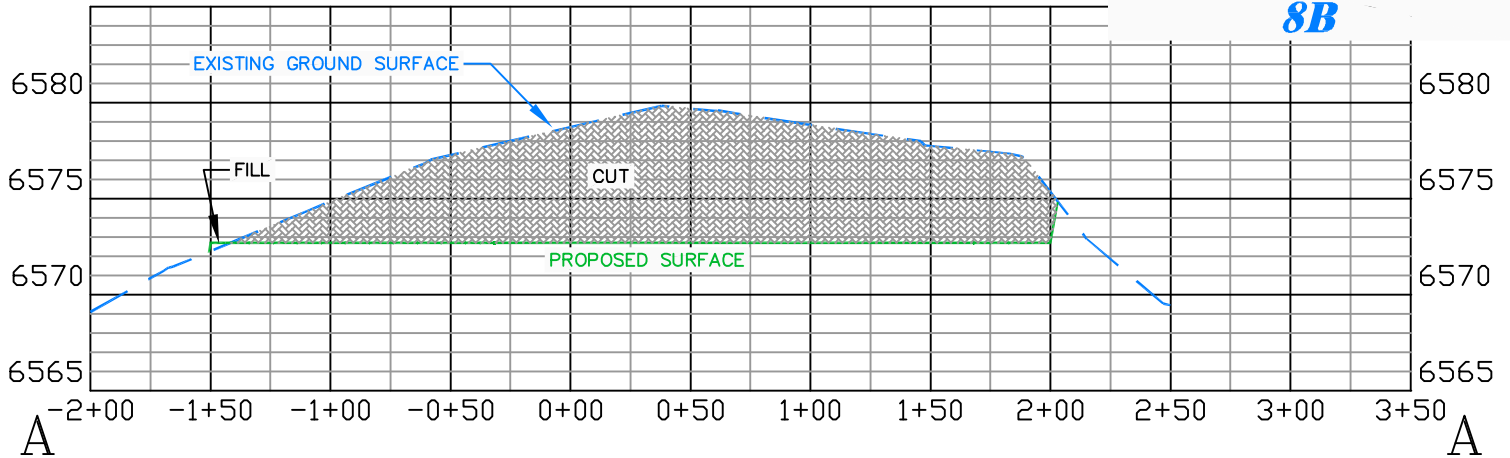
DRG **RIFFIN & ASSOCIATES, INC.**
 1414 ELK ST., ROCK SPRINGS, WY 82901
 (307) 362-5028

CONSTRUCTION LAYOUT DRAWING 2 OF 3

WILLIAMS PRODUCTION RMT COMPANY
FEDERAL RGU 31, 41, 42, 331, 332, 341, 342, 411, 431, 432, 441, 442, 532,
542, 544-1-298, 11, 12, 311, 411, 511-6-297
NENE, SECTION 1, T2S, R98W, 6th P.M.

ESTIMATED EARTHWORK (ALL PITS INCLUDED)

	CUT (15% EXPN)	FILL	TOPSOIL	EXCESS
DRAWN: 9/14/06 - MMM				
REVISD: 8/18/10 - DEH				
REVISD PITS				
SCALE: 1" = 80'				
DRG JOB No. 14550				
EXHIBIT 2 - SHEET 2 OF 2				
ITEM	CUT (15% EXPN)	FILL	TOPSOIL	EXCESS
PAD	16,181 CY	12,408 CY	3,595 CY	178 CY
PIT	8,753 CY			8,753 CY
TOTALS	24,934 CY	12,408 CY	3,595 CY	8,931 CY



FEDERAL RGU 41-1-298 PAD



(307) 362-5028

RIFFIN & ASSOCIATES, INC.
 1414 ELK ST., ROCK SPRINGS, WY 82901

DRAWN: 6/1/09 - MMM

HORZ. 1" = 80' VERT. 1" = 10'

REVISED: 8/4/10 - SJC

DRG JOB No. 14550

REVISED PAD

EXHIBIT 3

CONSTRUCTION LAYOUT DRAWING 3 OF 3

WILLIAMS PRODUCTION RMT COMPANY
FEDERAL RGU 31, 41, 42, 331, 332, 341, 342, 411, 431,
432, 441, 442, 532, 542, 544-1-298, 11, 12, 311, 411,
511-6-297 NENE, SECTION 1, T2S, R98W, 6th P.M.

UNGRADED ELEVATION: 6575.8'

FINISHED ELEVATION: 6572.6'