

R. 98 W.

N



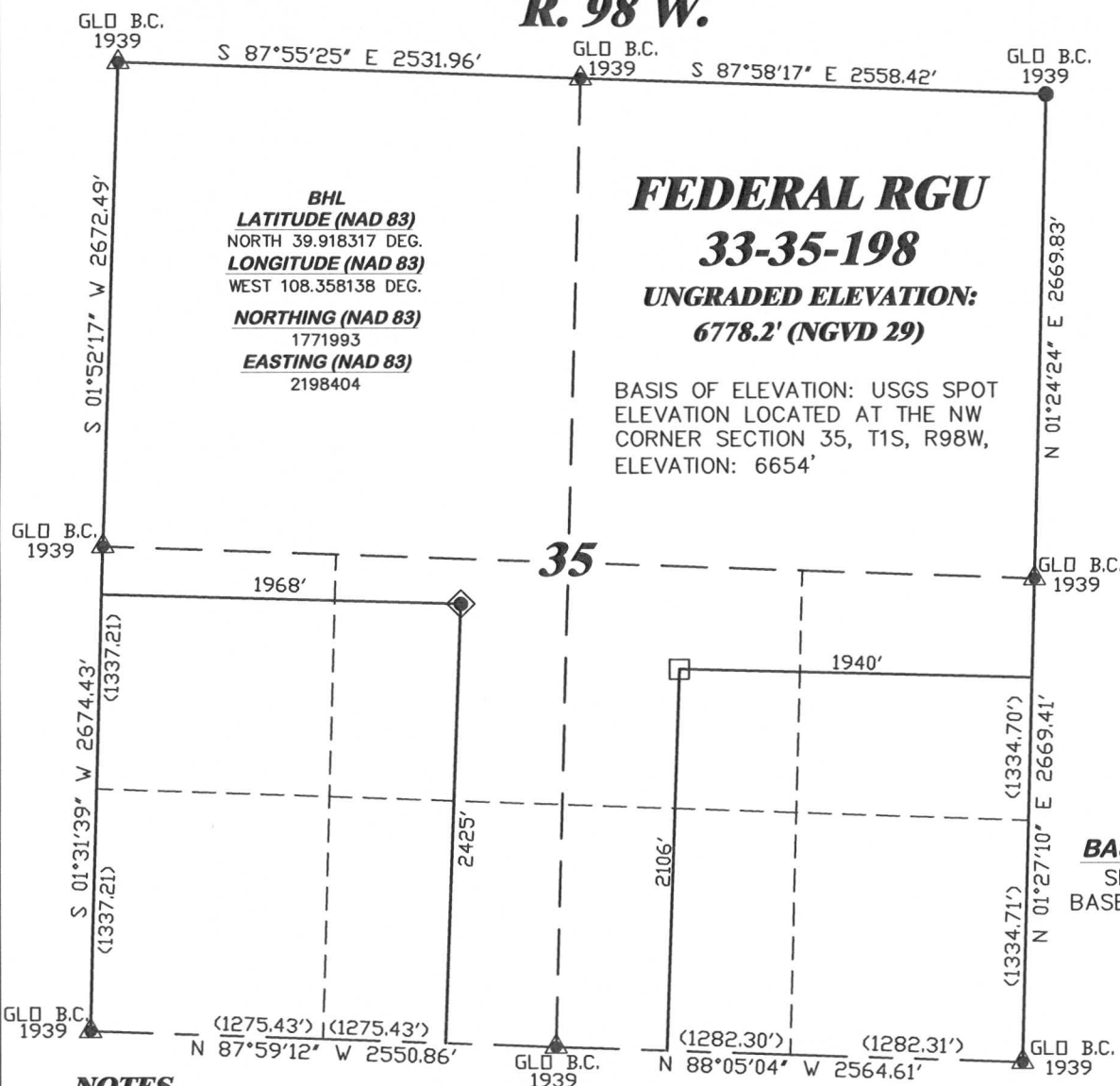
SCALE 1" = 1000'

T. 1 S.

LATITUDE (NAD 83)
NORTH 39.919201 DEG.
LONGITUDE (NAD 83)
WEST 108.362440 DEG.

NORTHING (NAD 83)
1772352.70
EASTING (NAD 83)
2197208.33

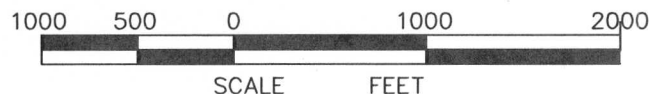
BASIS OF BEARING/DATUM
SPCS CO NORTH NAD 27
BASED ON NGS TRIANGULATION
STATION "BOISE"



NOTES

HIGH PLATEAU DESERT
EXISTING WELL FEATURES WITHIN
200' RADIUS OF WELL SITE.

GPS OPERATOR MARK BESSIE
OBSERVED A PDOP OF 2.4.
ALL GPS OBSERVATIONS ARE IN
COMPLIANCE WITH COGCC RULE No.215.



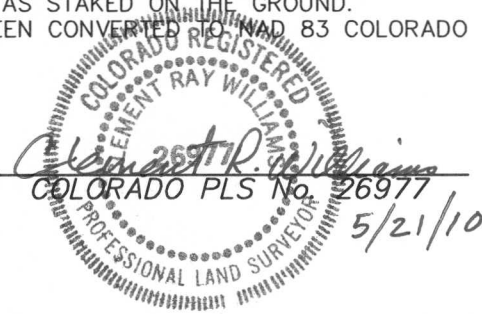
SURVEYOR'S STATEMENT

I, CLEMENT R. WILLIAMS, OF ROCK SPRINGS, WYOMING, HEREBY STATE: THIS MAP WAS MADE FROM NOTES TAKEN DURING AN ACTUAL FIELD SURVEY DONE UNDER MY DIRECT SUPERVISION ON NOVEMBER 10, 2008 AND THAT THIS PLAT CORRECTLY SHOWS THE LOCATION OF FEDERAL RGU 33-35-198 AS STAKED ON THE GROUND. FIELD SURVEY DATUM IS NAD 27 COLORADO NORTH. VALUES HAVE BEEN CONVERTED TO NAD 83 COLORADO CENTRAL (X,Y) FOR PURPOSES OF THIS PLAT.

LEGEND

- ◆ WELL LOCATION
- BOTTOM HOLE LOC. (APPROX)
- FOUND MONUMENT
- ▲ PREVIOUSLY FOUND MONUMENT

FEDERAL RGU 23-35-198 PAD



RIFFIN & ASSOCIATES, INC.
1414 ELK ST., ROCK SPRINGS, WY 82901

**PLAT OF DRILLING LOCATION
FOR
WILLIAMS PRODUCTION RMT COMPANY**
**2425' F/SL & 1968' F/WL, SECTION 35,
T. 1 S., R. 98 W., 6th P.M.
RIO BLANCO COUNTY, COLORADO**

DRAWN: 12/10/08 - MMM

SCALE: 1" = 1000'

REVISED: 5/21/10 - MMM

DRG JOB No. 14054-4

REVISED BHL & NAD 83 COC

EXHIBIT 1