

**EXISTING DISTURBANCE AREA: 7.0 ACRES±
PROPOSED NEW DISTURBANCE: 0.7 ACRES±
EXISTING ELEVATION: 6778.4'**



CUT/FILL LINE BASED ON PREVIOUS SURVEY BEFORE THE EXPANSION TOOK PLACE. NOT ENOUGH ORIGINAL TOPO DATA TO CREATE CONTOUR OF ORIGINAL SURFACE.

FEDERAL RGU 23-35-198 PAD	
SLOT	WELL
A1	OPEN
A2	13-35-198
A3	313-35-198
A4	413-35-198
A5	OPEN
A6	OPEN
A7	423-35-198
A8	OPEN
A9	523-35-198
A10	433-35-198
A11	33-35-198
B1	OPEN
B2	512-35-198
B3	(EXISTING) 412-35-198
B4	(EXISTING) 322-35-198
B5	OPEN
B6	323-35-198
B7	(EXISTING) 522-35-198
B8	422-35-198
B9	(EXISTING) 532-35-198
B10	OPEN
B11	333-35-198

**BEFORE DIGGING
CALL FOR
UTILITY LINE LOCATION**

NOTE: THE EARTH QUANTITIES ON THIS DRAWING ARE ESTIMATED AND THE USE OF THIS IS AT THE RESPONSIBILITY OF THE USER.

**NEW DISTURBANCE AREA:
0.7± ACRES**

FEDERAL RGU 23-35-198 PAD

SCALE FEET



DRG RIFFIN & ASSOCIATES, INC.
1414 ELK ST., ROCK SPRINGS, WY 82901

(307) 362-5028

DRAWN: 6/13/06

SCALE: 1" = 100'

REVISED: 8/23/10 - DEH

DRG JOB No. 14054

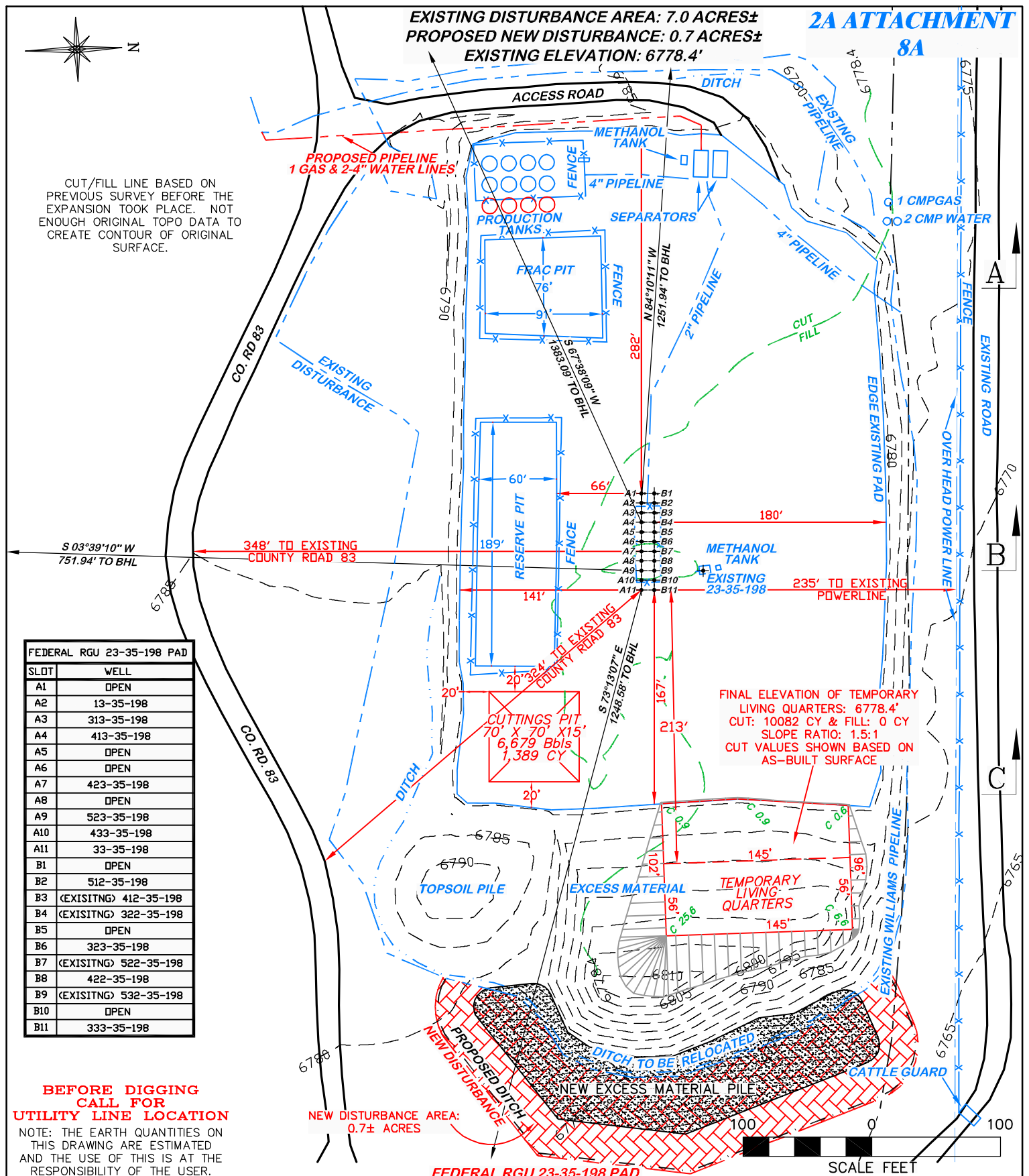
REVISED NEW EXCESS PILE

EXHIBIT 2 - SHEET 1 OF 2

CONSTRUCTION LAYOUT DRAWING 1 OF 4

**WILLIAMS RMT PRODUCTION COMPANY
FEDERAL RGU 13, 33, 313, 322, 323, 333, 412,
413, 422, 423, 433, 512, 522, 523, 532-35-198
NESW, SECTION 35, T1S, R98W, 6th, P.M.**

EXISTING ELEVATION: 6778.4'



**EXISTING DISTURBANCE AREA: 7.0 ACRES±
PROPOSED NEW DISTURBANCE: 0.7 ACRES±
EXISTING ELEVATION: 6778.4'**



CUT/FILL LINE BASED ON PREVIOUS SURVEY BEFORE THE EXPANSION TOOK PLACE. NOT ENOUGH ORIGINAL TOPO DATA TO CREATE CONTOUR OF ORIGINAL SURFACE.

FEDERAL RGU 23-35-198 PAD	
SLOT	WELL
A1	OPEN
A2	13-35-198
A3	313-35-198
A4	413-35-198
A5	OPEN
A6	OPEN
A7	423-35-198
A8	OPEN
A9	523-35-198
A10	433-35-198
A11	33-35-198
B1	OPEN
B2	512-35-198
B3	(EXISTING) 412-35-198
B4	(EXISTING) 322-35-198
B5	OPEN
B6	323-35-198
B7	(EXISTING) 522-35-198
B8	422-35-198
B9	(EXISTING) 532-35-198
B10	OPEN
B11	333-35-198

**BEFORE DIGGING
CALL FOR
UTILITY LINE LOCATION**

NOTE: THE EARTH QUANTITIES ON THIS DRAWING ARE ESTIMATED AND THE USE OF THIS IS AT THE RESPONSIBILITY OF THE USER.

**NEW DISTURBANCE AREA:
0.7± ACRES**

FEDERAL RGU 23-35-198 PAD

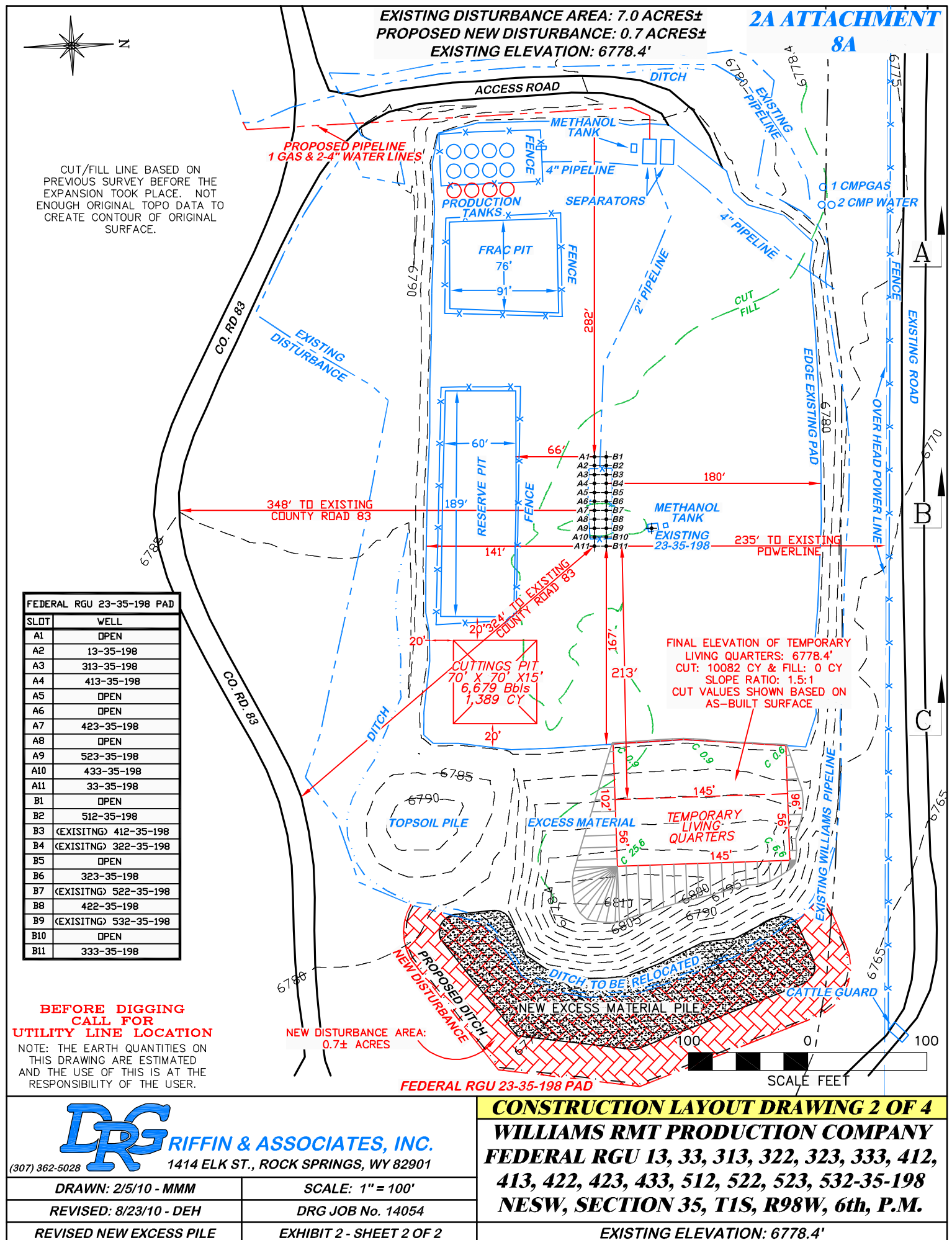
SCALE FEET

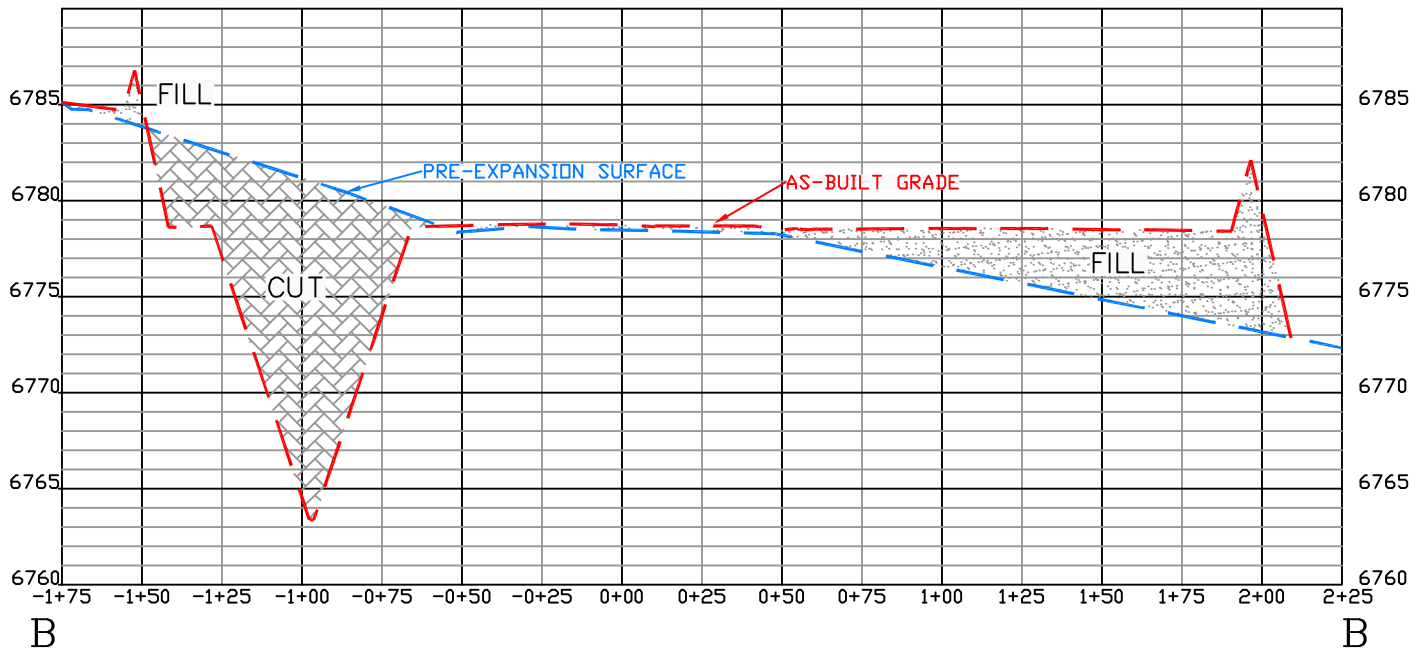
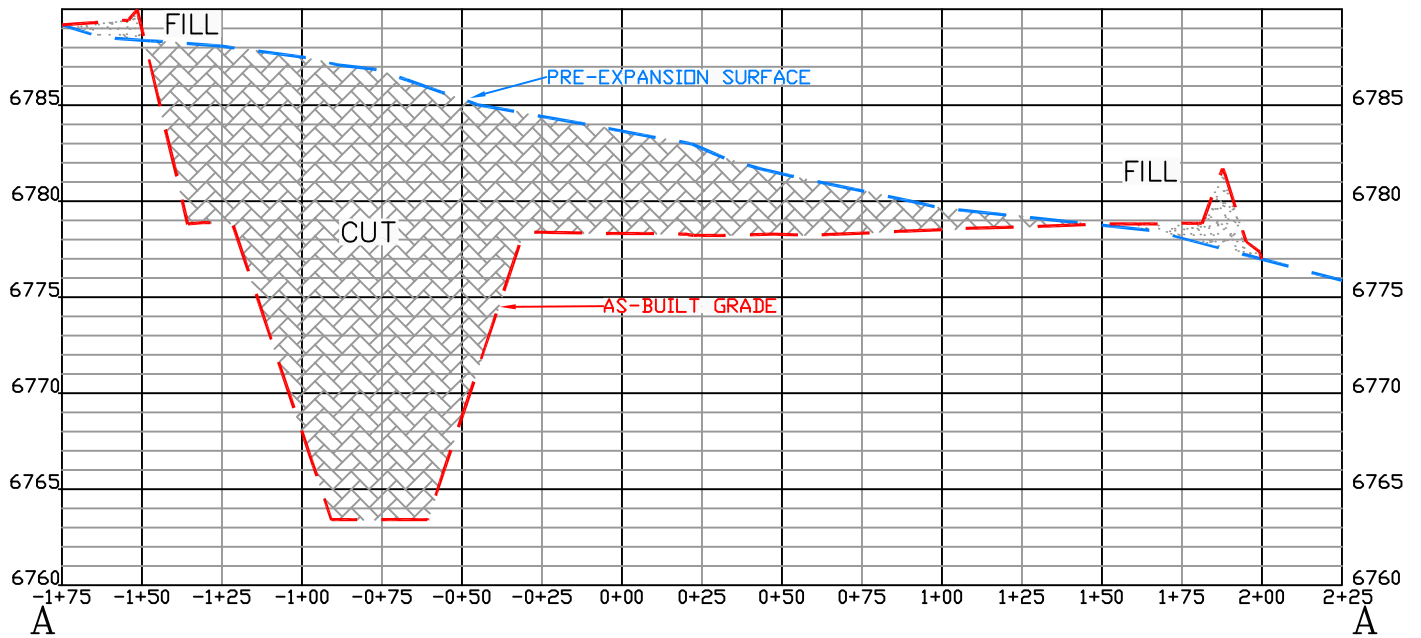
DRG RIFFIN & ASSOCIATES, INC.
(307) 362-5028 1414 ELK ST., ROCK SPRINGS, WY 82901

CONSTRUCTION LAYOUT DRAWING 2 OF 4

**WILLIAMS RMT PRODUCTION COMPANY
FEDERAL RGU 13, 33, 313, 322, 323, 333, 412,
413, 422, 423, 433, 512, 522, 523, 532-35-198
NESW, SECTION 35, T1S, R98W, 6th, P.M.**

EXISTING ELEVATION: 6778.4'





ORIGINAL SURFACE BASED ON PREVIOUS SURVEY
BEFORE THE EXPANSION TOOK PLACE. NOT
ENOUGH ORIGINAL TOPO DATA TO CREATE ORIGINAL
SURFACE FOR PROFILES.

FEDERAL RGU 23-35-198 PAD

DRG RIFFIN & ASSOCIATES, INC.
(307) 362-5028 1414 ELK ST., ROCK SPRINGS, WY 82901

DRAWN: 6/13/06

HORZ. 1" = 60' VERT. 1" = 10'

REVISED: 8/20/10 - DEH

DRG JOB No. 14054

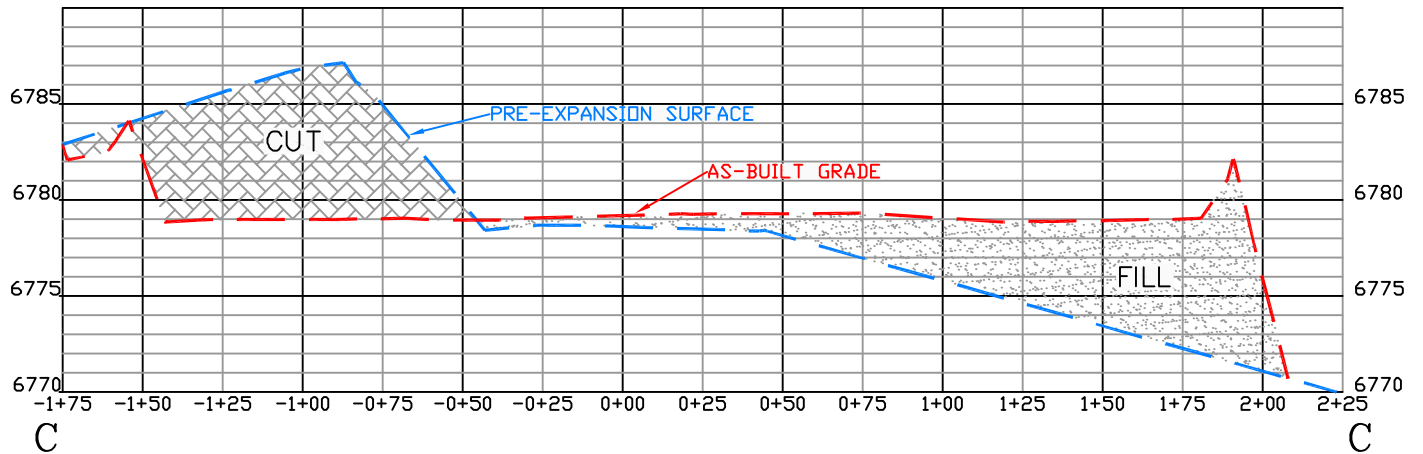
MISC. REVISIONS

EXHIBIT 3 - SHEET 1 OF 2

CONSTRUCTION LAYOUT DRAWING 3 OF 4


**WILLIAMS RMT PRODUCTION COMPANY
FEDERAL RGU 13, 33, 313, 322, 323, 333, 412,
413, 422, 423, 433, 512, 522, 523, 532-35-198
NESW, SECTION 35, T1S, R98W, 6th, P.M.**

EXISTING ELEVATION: 6778.4'



ORIGINAL SURFACE BASED ON PREVIOUS SURVEY
BEFORE THE EXPANSION TOOK PLACE. NOT
ENOUGH ORIGINAL TOPO DATA TO CREATE ORIGINAL
SURFACE FOR PROFILES.

FEDERAL RGU 23-35-198 PAD

 <p>DRG RIFFIN & ASSOCIATES, INC. (307) 362-5028 1414 ELK ST., ROCK SPRINGS, WY 82901</p>		<p>CONSTRUCTION LAYOUT DRAWING 4 OF 4</p> <p>WILLIAMS RMT PRODUCTION COMPANY FEDERAL RGU 13, 33, 313, 322, 323, 333, 412, 413, 422, 423, 433, 512, 522, 523, 532-35-198 NESW, SECTION 35, T1S, R98W, 6th, P.M.</p>	
DRAWN: 6/13/06	HORZ. 1" = 60' VERT. 1" = 10'	<p>EXISTING ELEVATION: 6778.4'</p>	
REVISED: 8/20/10 - DEH	DRG JOB No. 14054		
MISC. REVISIONS	EXHIBIT 3 - SHEET 2 OF 2		