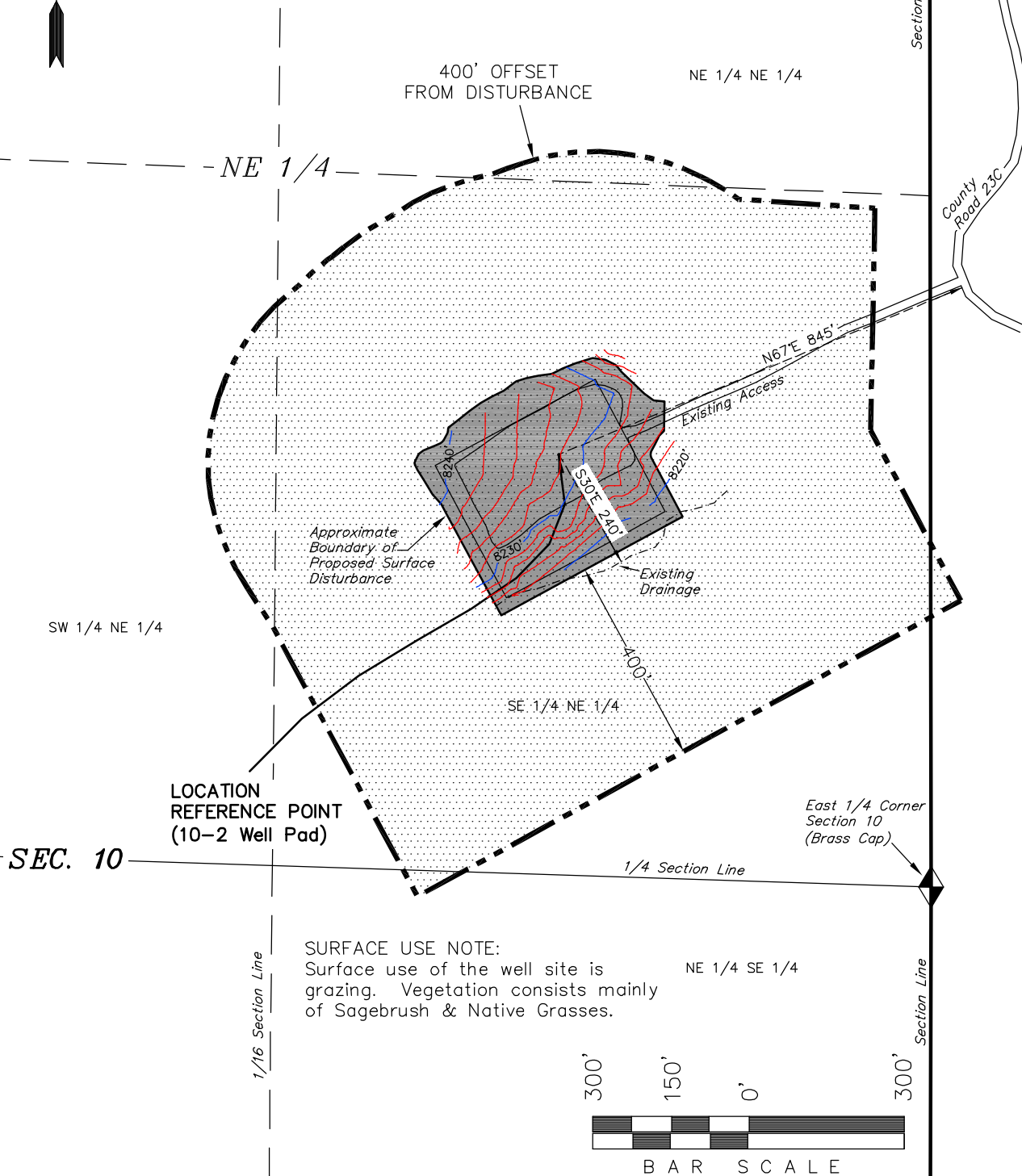


WELLSTAR CORPORATION

LOCATION DRAWING BUSH DRAW FEDERAL 10-2

Pad Location:
SENE SECTION 10, T8N, R78W, 6th P.M.



SURFACE USE NOTE:
Surface use of the well site is
grazing. Vegetation consists mainly
of Sagebrush & Native Grasses.

Distances from Well Head

WELL	BUILDING	ABOVE GROUND UTILITY	PUBLIC ROAD	RAILROAD
10-2	S04°W 13075'	S04°W 13075'	N67°E 845'	South 40 Miles

SURVEYED BY: P.H. DATE SURVEYED: 05-27-10
DRAWN BY: L.C.S. DATE DRAWN: 08-19-10
SCALE: 1" = 300' REVISED:

Tri State
Land Surveying, Inc.
180 NORTH VERNAL AVE. VERNAL, UTAH 84078
(435) 781-2501

SHEET
1b